

# Patient Surfaces

Patient Warming  
Pressure Management  
Patient Positioning



No matter how diverse your procedures are, STERIS can help you maximize patient and staff safety and comfort through our unique offering of surgical table pads, gels, and foams. You can find additional surgical tables and accessories by contacting us at **1-800-548-4873** or online at **[www.steris.com](http://www.steris.com)**

To browse STERIS's comprehensive portfolio of Surgical Table Accessories, please **[CLICK HERE](#)** to open our Accessory Catalog.

## Table of Contents

### Surgical Table Surfaces (Mattress Pads)

STERIS Patient Warming System .....	4
Hybrid Layer Technology (HLT).....	6
Pressure Reduction System (PRS).....	8
Tri-Layer Technology (TLT).....	10

### Gel Patient Positioning Pads

Patient Positioning Gel Pad Packages .....	12
Individual Gel Patient Positioning Pads .....	14

### Single-Use Foam Patient Positioning Pads

.....	16
-------	----

### Replacement Pads for Surgical Table Accessories

.....	18
-------	----

### Patient Transfer Accessories

.....	24
-------	----

**STERIS Table Pad Warranty:** STERIS is committed to Customer satisfaction. STERIS will provide free replacement parts for surgical table pads to correct any defects(s) in material or workmanship occurring during the 90 day warranty period.

STERIS table pads are manufactured from a 4-way stretch knit fabric that is coated with a proprietary polyurethane coating that resists degradation from wear-and tear, OR cleaning chemicals, and resists surface growth of infectious diseases. The cover material is also fluid-proof, bacteria-resistant, flame-retardant, non-toxic, and latex-free. All pads are manufactured with ultra-sonically welded seams to prevent fluid intrusion, which occurs over time with traditional stitch and glue fabrication methods. A unique air vent allows air to flow in-and-out of the foam interior but resists the intrusion of liquids. No more vent flaps!



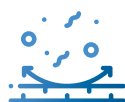
**RADIOLUCENT**



**LATEX  
-FREE**



**ANTI-  
STATIC**  
preventing  
the build-up  
of static  
electricity



**ANTI-  
MICROBIAL**



**FLAME  
RETARDANT**



**PREVENTING  
INGRESS  
OF FLUIDS**  
(our cushions are  
sonically welded)



**AIR VENTING  
SYSTEM**  
Allowing air  
to enter and  
escape

**Table Pads are compliant to the following Flame Resistance and/or Flammability Ratings:**

- ✓ California Technical Bulletin 117 (CAL 117:2013)
- ✓ California Technical Bulletin 129 (CAL 129)

# STERIS Patient Warming System



The STERIS Patient Warming System (PWS) is a conductive heating product designed for use on OR surgical tables that provides comforting warmth to patients as soon as they are transferred to the surgical table. The system is comprised of the following components:

- ▶ 3" TLT Heated Torso Pad
- ▶ 3" TLT Head & Leg Pads (unheated)
- ▶ Controller
- ▶ Overbody Warming Blanket (optional)

## Patient Temperature Management

The Patient Warming System's heated surgical table pad means the patient is warmed from the moment of arrival to the OR table and throughout the entire procedure.

## Conductive, Not Convective

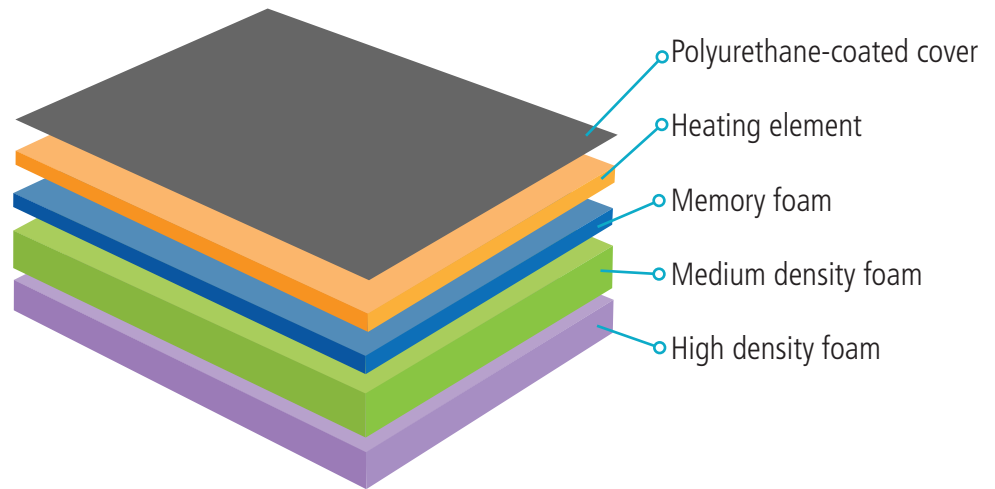
Conductive heat transfer is through direct contact between the patient and the surgical table pad and the overbody blanket. The STERIS PWS is not a convective technology, meaning it does not blow air in the OR.

## Compact Design

A small controller can be mounted to the table side rail or IV pole close to anesthesia. Cables are thin and easy to connect. The durable overbody blanket minimizes bulk that may be a nuisance during use.



- ▶ Provides heat to the patient before, during or after procedures in the OR
- ▶ Uses conductive, not convective, heat transfer through direct contact between the patient and the surgical table
- ▶ Comprised of TLT Pad components (see pg. 10) including memory foam, medium & high density poly foams to deliver high-performance pressure management



### Reducing Unintended Perioperative Hypothermia

Perioperative hypothermia prevention is about minimizing or eliminating the decline in core temperature before, during and immediately after the induction of anesthesia.<sup>1</sup> Patients having shorter surgeries are more likely to experience postoperative hypothermia because there is simply not enough time to overcome the effect of redistribution with intraoperative warming alone.<sup>2</sup> The active warming device should be started as soon as possible when the patient arrives and prior to induction of anesthesia.<sup>3</sup>

### STERIS Patient Warming System (3" Pad Sets & Components)

Product No.	Product Name	Applicable Surgical Tables
BF030	STERIS Patient Warming System Pack (Heated Torso Pad / Head & Leg Pads / Controller)	4085 / 4095 / 5085 / 5085 Harmony / 5085 SRT / 5095 / CMAX
BF032	STERIS Patient Warming System Controller	4085 / 4095 / 5085 / 5085 Harmony / 5085 SRT / 5095 / CMAX
BF033	STERIS Patient Warming System Complete 3" Pad Set (Heated Torso / Head / Leg)	4085 / 4095 / 5085 / 5085 Harmony / 5085 SRT / 5095 / CMAX
BF035	STERIS Patient Warming System Overbody Blanket	4085 / 4095 / 5085 / 5085 Harmony / 5085 SRT / 5095 / CMAX
BF037	STERIS Patient Warming System 3" Heated Torso Pad	4085 / 4095 / 5085 / 5085 Harmony / 5085 SRT / 5095 / CMAX

<sup>1</sup>AORN Guidelines

<sup>2</sup>AORN 4 Updates for More Effective Hypothermia Prevention

<sup>3</sup>AORN Guidelines



# Hybrid Layer Technology (HLT) Pads

## Patient Safety Is More Than Skin Deep

Patients are getting heavier, older, and sicker, increasing their risk of OR-acquired ulcers. Prolonged exposure to high pressure during surgery, particularly over bony prominences, can lead to ischemia and necrosis of the skin. Because ulcers present themselves hours or days after patients leave surgery, the OR staff is often unaware of the damage. When using STERIS Hybrid Layer Technology (HLT) pads, high pressure points experience less pressure due to improved load distribution.

HLT table pads are engineered to absorb the patient's weight and redistribute pressure in specific areas commonly associated with OR-acquired ulcers. They provide excellent pressure management to reduce the potential for tissue damage while providing comfort for the patient. The HLT pads have minimal attenuation of fluoroscopic X-ray for clear image quality. The pad sets and individual section pads are available in 5" configurations. They all include soft hook-and-loop fastener strips for securing to the tabletop.

## Engineered to redistribute pressure away from trouble spots

Using anthropometric patient scenarios, the HLT pads target and protect bony prominences such as the head, sacrum, and heels with anatomy-specific support.

- ▶ High specification mattress pad for superior pressure management
- ▶ Optimal bony prominence protection
- ▶ Eliminates need for protective overlays

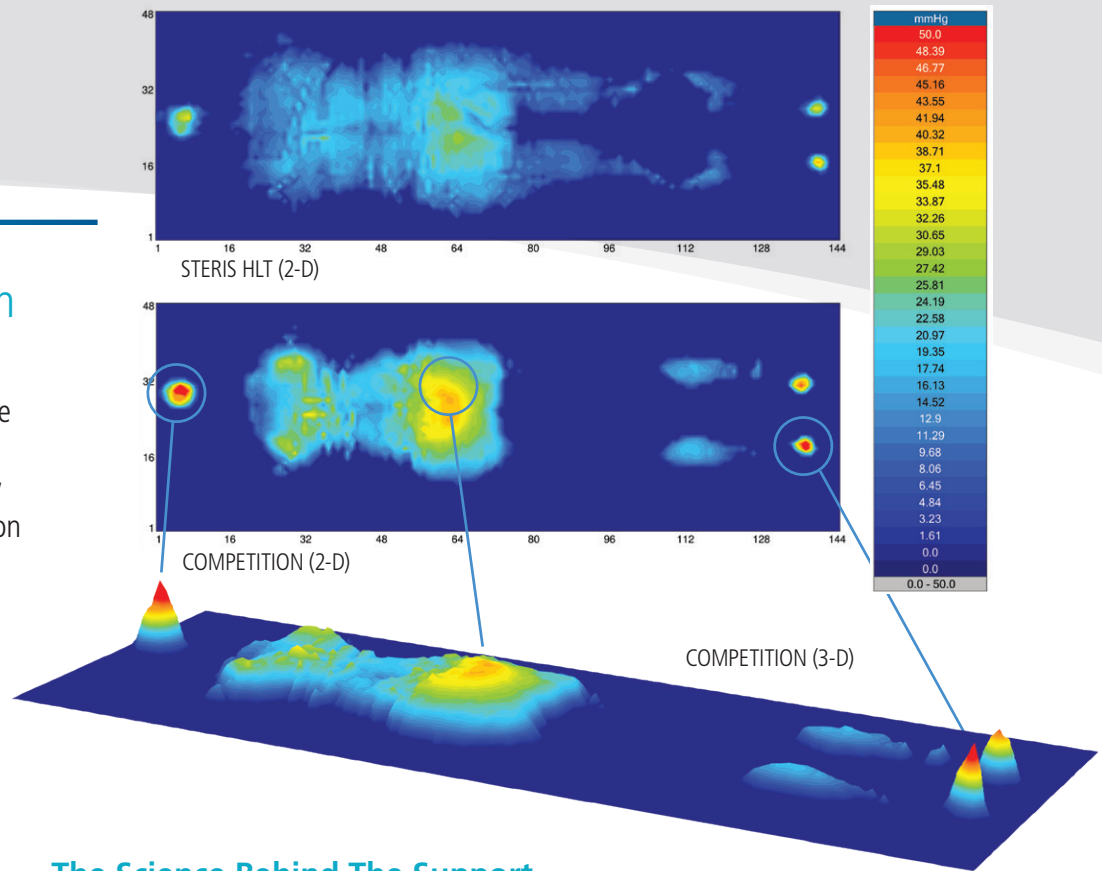


Unique HLT geometry optimizes load distribution in critical areas



## The Same Patient On Different Pads

In the diagram to the right, the red peaks indicate high levels of pressure which are typically associated with tissue occlusion and pressure ulceration.



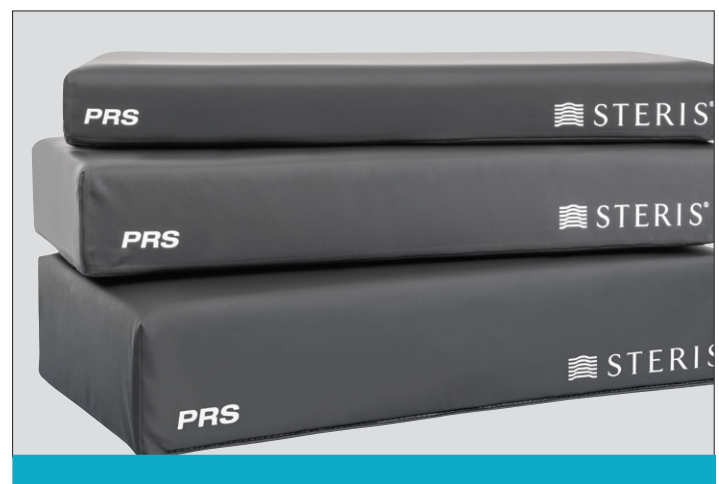
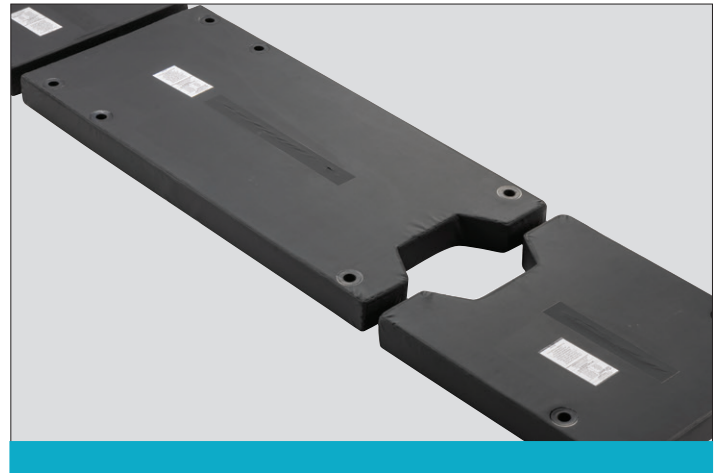
## The Science Behind The Support

High levels of pressure are less pronounced with the Hybrid Layer Technology. The better the pad redistributes this pressure, the less red you see and the more your patient is protected.

STERIS Hybrid Layer Technology (HLT) Pads (5" Pad Sets & Components)		
Applicable Surgical Tables	HLT Pad/Set	Product No.
4085/4095/5085/5095/ CMAX	Complete Set, 3 Pieces	BF385
	Head Section Only	BF386
	Back/Seat Section Only w/ Perineal Cutout	BF387
	Leg Section Only w/ Perineal Cutout	BF388
5085 SRT	Complete Set, 3 Pieces	BF383
	Head Section Only	BF384
	Back/Seat Section Only w/ Perineal Cutout	BF387
	Leg Section Only w/ Perineal Cutout	BF388
3080/3085	Complete Set, 3 Pieces	BF389
	Head Section Only	BF391
	Back/Seat Section Only w/ Perineal Cutout	BF392
	Leg Section Only w/ Perineal Cutout	BF393

# Pressure Reduction System (PRS) Pads

**STERIS's Pressure Reduction System (PRS) Surgical Pads offer a unique alternative to our standard TLT (Tri-Layer Technology) pads** most significantly in the way they attach to the surgical table. While like our TLT surgical table pads in design and clinical performance, PRS pads are the first table pads available from STERIS without hook-and-loop (Velcro®-brand) fasteners. Instead PRS pads secure to the tabletop surface using a unique metal retainer, we call a Mushroom Cap. There are ten Mushroom Caps on the table surface to retain the mattress pads via corresponding rubber cups on the pad's underside that mate with metal retainers.



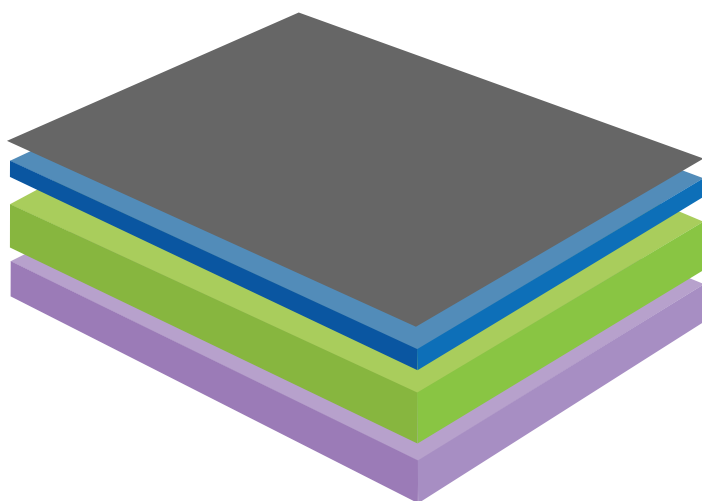
The reduction or complete elimination of hook-and-loop fasteners is an important shift for the modern OR. Hook-and-loop material, while a wonderful technology, is not necessarily perfect for the OR in every application, and it is notoriously challenging to clean and disinfect properly. It is often contaminated with OR materials including tape residue, fabric particles, and becomes very difficult to clean when soaked with blood or other bodily fluids.

**PRS pads offer excellent pressure management** to reduce the potential for tissue damage while providing comfort for the patient. 3-piece pad sets (Head, Back/Seat, Leg) and individual section pads are available in 2", 3" and 4" thicknesses. Variations in the cutout of the leg sections are available.





PRS pad's foam core is comprised of a proprietary construction of three layers of specialized foam:



- ▶ The top layer of soft slow-recovery viscoelastic (memory) foam conforms to patient weight
- ▶ The middle layer of cushioning foam spreads forces for even distribution of weight
- ▶ The bottom layer of high-density foam suspends the patient safely above the hard surface of the surgical tabletop

### Pressure Reduction System (PRS) Pads for General Surgical Tables

2" / 3" / 4" Pad Sets & Components

Applicable Surgical Tables	PRS Pad/Set	2" PRS	3" PRS	4" PRS
4085 / 4095 / 5085 / 5085 Harmony / 5085 SRT / 5095	Complete Set, 3 Pieces	BF272	BF279	BF245
	Complete Set, 3 Piece w/ FWLS Pad w/out Perineal Cutout	BF016	N/A	N/A
	Head Section Only	BF273	BF280	BF246
	Back/Seat Section Only w/ Perineal Cutout	BF274	BF281	BF247
	Leg Section Only w/ Perineal Cutout	BF275	BF282	BF248
	Leg Section w/out Perineal Cutout (FWLS)	BF276	BF283	BF249

# Tri-Layer Technology (TLT) Pads

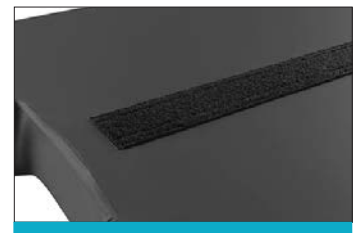
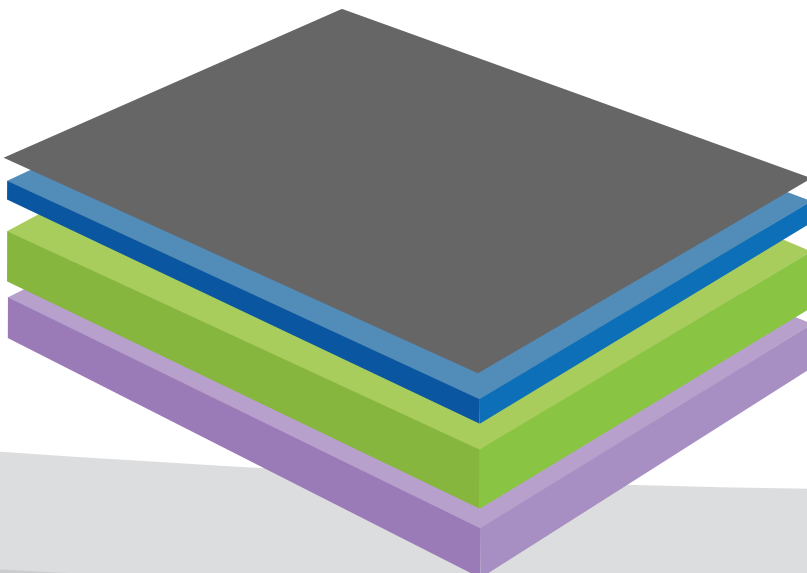
STERIS's Tri-Layer Technology pressure management pads come standard on all STERIS tables and accessories. TLT pads come with soft hook-and-loop Velcro®-brand fasteners for securing to the surgical tabletop.

TLT pads offer minimal attenuation of fluoroscopic X-ray for clear image quality. 3-piece pad sets (Head, Back/Seat, Leg) and individual section pads are available in 2", 3" and 4" thicknesses. Variations in the cutout at the Back/Seat and Leg sections are available.



STERIS's Tri-Layer Technology pressure management pads foam core is comprised of a proprietary construction of three layers of specialized foam:

- ▶ The top layer of soft slow-recovery viscoelastic (memory) foam conforms to patient weight
- ▶ The middle layer of cushioning foam spreads forces for even distribution of weight
- ▶ The bottom layer of high-density foam suspends the patient safely above the hard surface of the surgical tabletop



## Tri-Layer Technology (TLT) Pads for General Surgical Tables 2" / 3" / 4" Pad Sets & Components

Applicable Surgical Tables	TLT Pad/Set	2" TLT	3" TLT	4" TLT
4085/4095/5085/5095/ CMAX	Complete Set, 3 Pieces	BF58	BF230	BF291
	Complete Set, 3 Piece w/ FWLS Pad w/out Perineal Cutout	BF65	BF234	N/A
	Head Section Only	BF581	BF231	BF292
	Back/Seat Section Only w/ Perineal Cutout	BF582	BF232	BF293
	Leg Section Only w/ Perineal Cutout	BF583	BF233	BF294
	Leg Section w/out Perineal Cutout (FWLS)	BF83300339	BF235	BF409
	Back/Seat Section w/out Perineal Cutout	BF834002026	BF240	BF834002026
5085 SRT	Complete Set, 3 Pieces	BF095	BF236	BF295
	Head Section Only	BF096	BF237	BF296
	Back/Seat Section Only w/ Perineal Cutout	BF582	BF233	BF293
	Leg Section Only w/ Perineal Cutout	BF583	BF231	BF294
	Leg Section w/out Perineal Cutout (FWLS)	BF83300339	BF235	BF409
	Back/Seat Section w/out Perineal Cutout	BF834002026	BF240	BF834002026
3080/3085	Complete Set, 3 Pieces	BF321	BF226	BF112
	Head Section Only	BF321001	BF228	BF113
	Back/Seat Section Only w/ Perineal Cutout	BF321002	BF229	BF114
	Leg Section Only w/out Perineal Cutout	BF321003	BF227	BF115
	Back/Seat Section w/out Perineal Cutout	BF833300206	BF239	N/A

## TLT Pads for Specialty Surgical Tables

Applicable Surgical Tables	TLT Pad/Set	2" TLT	3" TLT	4" TLT
OT 1000/1100/1200	Complete Set	BF771	N/A	N/A
	Head Section Only	BF681	N/A	N/A
	Back Section Only	BF682	N/A	BF373
Ortho 2, OrthoVision, and OrthoView / SurgiGraphic 1027 / SurgiGraphic 6000	Complete Set	BF323	N/A	N/A
	Complete Set	TA0001	N/A	N/A
	Complete Set	TA00007	N/A	N/A

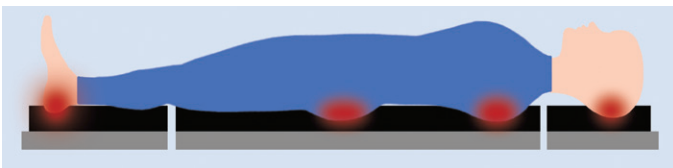
# AQUAGEL™ Gel Positioners

STERIS'S AQUAGEL Gel Positioners are the result of in-depth research in an innovative pressure management concept that brings an entirely new dimension of protection to the surgical patient. It is the first and only static OR table positioning device to employ:

- ▶ Dual density construction
- ▶ Anatomically specific contouring
- ▶ Integral 3-dimensional cradling
- ▶ Volumetric re-distribution of pressure

Pressure sores commonly occur over bony prominences. The anatomical bony prominences that support much of the weight of a supine patient are head, shoulders, sacrum, and heels. In this orientation the bony prominence will compress muscle and subcutaneous tissue that can lead to tissue ischemia and necrosis.


AQUAGEL modular components cradle and conform to anatomical characteristics giving you greater control over pressure management in the OR. In many cases interface pressures on some bony prominences are eliminated.



Pressure Management without Aquagel



Pressure Management with Aquagel

STERIS Supine Packages		Gel Positioner Set	
		BF486 (LARGE)	BF487 (MED)
	Supine Head Rest	1	1
	Arm Protectors	2	2
	Full Length Table Pad	1	1
	Sacral Protector	1	1
	Leg Protectors	2	2

STERIS offers three different levels of gel positioners. AQUAGEL positioners are made of dual density construction and 3-dimensional contouring to increase the patient body surface contact with the positioner. The OASIS™ gel positioners combine lightweight foam with silicone gel and are shaped for specific patient positioning needs. The ELITE™ gel positioners are traditional gel positioners made from 100% silicone.

## Comparing Gel Technology



### Heel on recovery / memory foam table mattress.

- ▶ Visible tissue compression / distortion.
- ▶ Direct pressure on heel.
- ▶ Little shear protection.



### Heel on flat gel overlay on top of recovery foam table mattress


- ▶ Visible tissue compression / distortion.
- ▶ No pressure reduction.
- ▶ Reduced shear.



### Heel on 3-dimensional - Contoured AQUAGEL "Leg Protector."

- ▶ No tissue compression or distortion.
- ▶ Complete pressure re-distribution.
- ▶ Excellent shear protection.

STERIS Lateral Packages		Gel Positioner Set	
		BF488 (LARGE)	BF489 (MED)
	Lateral Positioner	1	1
	Head Protector	1	1
	Arm Protectors	3	3
	Full Length Table Pad	1	1

STERIS Prone Packages			
		LARGE	MED
	Prone Positioner, Adult	BF485	BF485
	Prone Head Positioner	BF464	BF465
	Flat Bottom Chest Roll	BF483	BF467
	Armboard Positioner	BF427	BF426



## Head/Neck Gel Positioners



**HEAD PROTECTOR (AQUAGEL)**

**BF463**

10 X 10 X 2"



**PRONE HEADREST (ELITE)**

**BF464** LARGE

11 X 9 X 6"

**BF465** MED

9 X 7.5 X 5"



**SUPINE HEADREST (ELITE)**

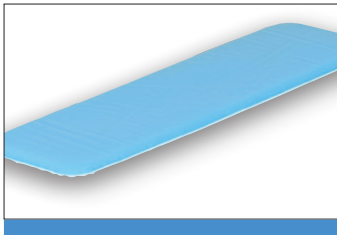
**BF466** LARGE

10.75 X 9.5 X 3.5"

**BF467** MED

10.5 X 9 X 2.5"

## Arm Positioners



**ARMBOARD PAD (OASIS)**

**BF427** LONG

23.5 X 5 X 0.5"

**BF426** SHORT

15 X 4 X 0.5"



**ARM PROTECTOR (AQUAGEL)**

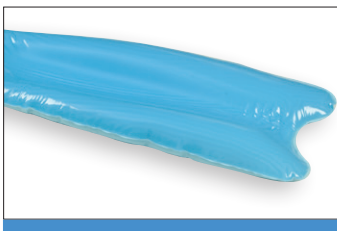
**BF476** LONG

18 X 7 X 1.5"

**BF475** SHORT

13 X 5.5 X 1"

## Leg Positioners



**LEG PROTECTOR (AQUAGEL)**

**BF478**

20 X 7 X 1.5"



**HEEL PROTECTORS**

SET OF 2 (AQUAGEL)

**BF477**

7.5 X 7 X 1"

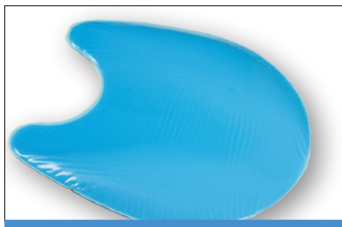


**CRUTCH STIRRUP (OASIS)**

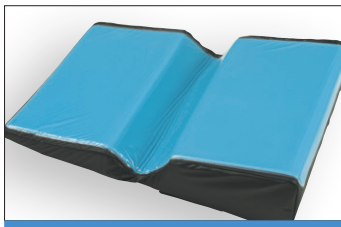
**BF48** LARGE

15.5 X 9.5 X 0.5"

## Torso/Body Positioners



**SACRAL PROTECTOR (AQUAGEL)**  
**BF474**  
15.75 X 15 X 1"



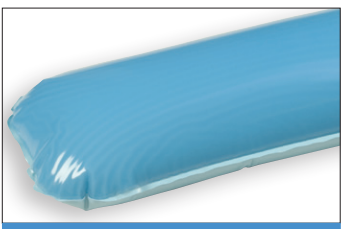
**LATERAL POSITIONER (ELITE)**  
**BF484**  
28 X 20.5 X 6"



**PRONE POSITIONER, ADULT (ELITE)**  
**BF485**  
24 x 4.5 x 20.5"

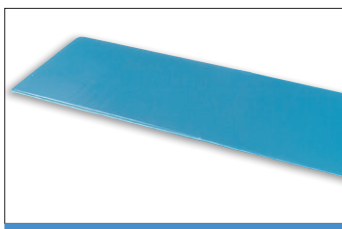


**FLAT BOTTOM CHEST ROLL (ELITE)**  
**BF483** LARGE  
20 X 6 X 4"  
**BF482** MED  
16 X 5.75 X 2.5"



**PATIENT POSITIONER (AQUAGEL)**  
**BF481**  
16 X 5.75 X 2.5"

## General Gel Positioners & Overlays



**FULL LENGTH TABLE PAD (OASIS)**  
**BF473** LARGE  
70 X 20.5 X 0.5"

# Single-Use Foam Patient Positioning Pads

STERIS's portfolio of single-use surgical patient positioning accessories are designed to be used during a surgical procedure to reduce the probability of infectious disease transmission and disposed of following the procedure.



## DISPOSABLE A-LINE POSITIONER BF170

Simple, easy-to-use patient positioning device for all A-line insertions. Anatomically formed base with two, exclusive 1"W x 17"L soft-edge straps. Sold 12 per case.

- ▶ Straps reduce risk of skin ulceration in patients
- ▶ Base provides best angle for hand, wrist, and forearm positioning
- ▶ Keeps skin taut for optimal needle insertion



## DISPOSABLE LARGE DONUT POSITIONING PADS BF514

High-density polyfoam.  
Sold 24 per case.  
1.5 x 9" (4 x 23cm)  
(23 x 20 x 9cm)



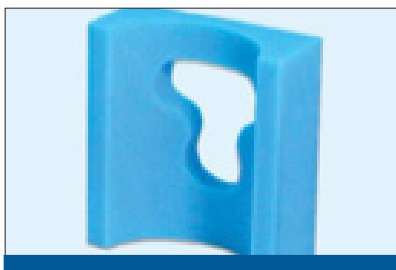
## DISPOSABLE SMALL DONUT POSITIONING PADS BF515

High-density polyfoam.  
Sold 36 per case.  
1.5 x 6" (4 x 15cm)



## DISPOSABLE SUPER DONUT POSITIONING PADS BF516

High-density polyfoam.  
Sold 36 per case.  
9 x 10 x 1" (23 x 25 x 3cm)



## DISPOSABLE HEAD SUPPORT POSITIONING PADS BF509

High-density polyfoam.  
Sold 12 per case.  
9 x 8 x 3.5" (23 x 20 x 9cm)



## DISPOSABLE RICHARDS SLOTTED HEADREST BF525

High-density polyfoam.  
Sold 6 per case.  
10" (25cm)



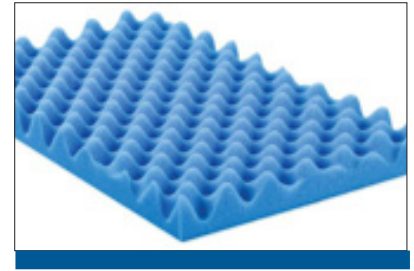
**DISPOSABLE LAMINECTOMY  
ARM CRADLES**  
**BF524**

High-density polyfoam.  
Sold 12 per case.  
5 x 24 x 3" (13 X 61 X 8 cm)



**DISPOSABLE CHEST ROLL  
POSITIONING PAD**  
**BF512**

High-density polyfoam.  
Sold 12 per case.  
5 x 17" (13 x 43 cm)



**DISPOSABLE CONVOLUTED SHEET  
POSITIONING PADS**  
**BF513**

High-density polyfoam.  
Sold 12 per case.  
20 x 12 x 2" (51 x 31 x 5cm)



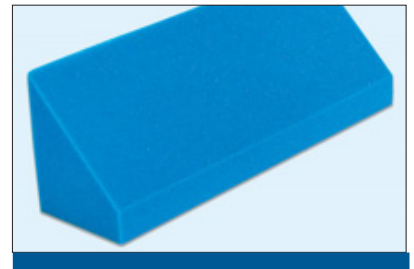
**DISPOSABLE BODY ALIGNER  
HALF WEDGE  
POSITIONING PAD**  
**BF510**

High-density polyfoam.  
Sold Individually.  
14 x 8 x 10" (36 x 20 x 25cm)



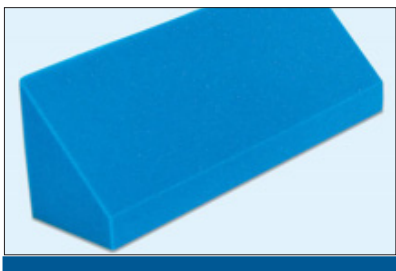
**DISPOSABLE BODY ALIGNER  
WEDGE POSITIONING PAD**  
**BF511**

High-density polyfoam.  
Sold individually.  
28 x 8 x 10" (71 x 20 x 25cm)



**DISPOSABLE WEDGE  
POSITIONING PAD -LARGE**  
**BF517**

High-density polyfoam.  
Sold individually.  
24 x 9.75 x 6.75"  
(61 x 25 x 17cm)



**DISPOSABLE WEDGE  
POSITIONING PAD-SMALL**  
**BF518**

High-density polyfoam.  
Sold Individually.  
24 x 7 x 7" (61 x 18 x 18 cm)



**DISPOSABLE ARTHROSCOPIC LEG  
HOLDER PAD**  
**BF13**

Use with Deluxe Arthroscopic Leg Holder (BF13).  
Layered multi-density polyfoam with Velcro(R).  
Sold 12 per case.

# Replacement Pads for Surgical Table Accessories

## Headrest Replacement TLT Pads



**CONE-SHAPED HEADREST**  
BF83 2"  
BF831 4"



**NARROW HEADREST**  
BF491 2"  
BF401 4"



**HORSESHOE HEADREST**  
BF492 2"

## Arm Support Replacement TLT Pads



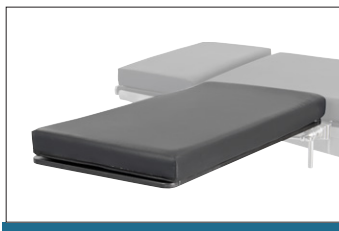
**ANESTHESIA ARMBOARD OR IV  
ARMBOARD**  
BF345 1"  
BF326 2"  
BF327 3"  
BF394 4"  
BF395 5"



**MULTI-AXIS ARMBOARD  
MULTI-AXIS ARMBOARD RC**  
BF00029 2"



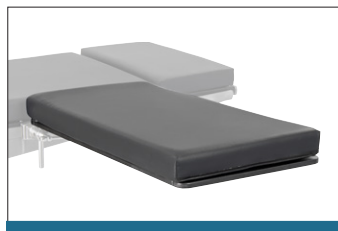
**MULTI-POSTURE  
ARMBOARD**  
BF81 2"



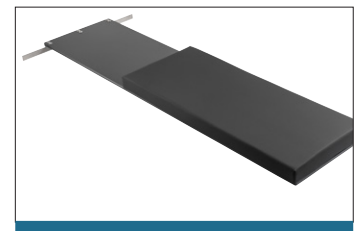
**ADULT ARM AND HAND TABLE**  
BF812 2"



**MICRO-SURGICAL ARM AND  
HAND TABLE**  
BF811 2"



**PEDIATRIC ARM AND HAND  
TABLE**  
BF814 2"



**RADIAL AVFISTULA BOARD**  
BF494 2"  
BF00024 3"



## Leg Support & Transfer Board Replacement TLT Pads



### POWERLIFT STIRRUPS

**BF222** ADULT SET (L & R PAIR)  
**BF16** BARIATRIC SET (L & R PAIR)  
**BF027** PEDIATRIC SET (L&R)  
**BF028** JUNIOR SET (L&R)



### SPLIT LEG POSITIONERS

**BF351000337** 2" LEFT  
**BF351000338** 2" RIGHT  
**BF00014** 3" LEFT  
**BF00012** 3" RIGHT



### FOOT EXTENSION

**BF816** 2"  
**BF379** 4"  
**BF493** 2" BARIATRIC WIDTH  
**BF366** 4" BARIATRIC WIDTH



### 9" UROLOGY EXTENSION

**BF83400053** 2"  
**BF00001** 3"  
**BF408** 4"



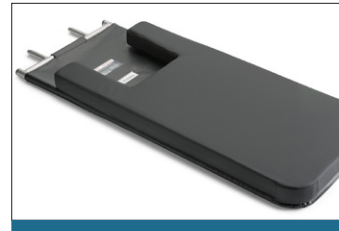
### IA EXTENDER

**BF829** 2"  
**BF399** 4"



### UROLOGY TRANSFER BOARDS

**BF82** 2"  
**BF00002** 3"



### ORTHOPEDIC TRANSFER BOARDS

**BF818** 2" (OT1000, ORTHOVISION)  
**BF396** 4" (OT1000, ORTHOVISION)  
**BF819** 4" (ORTHO EXTENSION)



### 36" CARBON FIBER FLUORO EXTENSION

**BF171** 2"  
**BF00007** 3"  
**BF403** 4"

## Orthopedic Accessory Replacement TLT Pads



### ARTHROSCOPY KNEE HOLDER

**BF718** (3 PIECE SET)



### HIP REST

**BF827** 2"  
**BF372** 4"



### WEDGE & T-SHAPED SACRAL RESTS

**BF584** 2" WIDE WEDGE  
**BF825** 2" WEDGE-SHAPED ADULT  
**BF826** 2" WEDGE-SHAPED CHILD  
**BF824** 2" T-SHAPED  
**BF369** 4" WEDGE-SHAPED ADULT  
**BF397** 4" WEDGE-SHAPED CHILD



### PERINEAL POST PADS

**BF687** TALL  
**BF004** SHORT  
**BF783** ARTHROSCOPIC  
**N0001** Single-Use

# Replacement Accessory Pads

## 1" TLT Replacement Pads

TYPE	PRODUCT #
Anesthesia Armboard (BF431, BF448)	BF345
IV Armboard (BF141, BF365)	BF345

## 2" TLT REPLACEMENT PADS

TYPE	PRODUCT #	TYPE	PRODUCT #
9" Urology Extension (BF578)	BF83400053	Multi-Axis Armboard (BF71239)	BF00029
36" Carbon Fiber Fluoro Extension (BF642)	BF171	Multi-Posture Armboard (BF432)	BF81
Adult Arm and Hand Table (BF435)	BF812	Narrow Headrest (BF592)	BF491
Anesthesia Armboard (BF431, BF803)	BF326	Pediatric Arm and Hand Table (BF434)	BF814
Arthroscopy Knee Holder (BF717)	BF718	Perineal Post (BF00065) (Case of 10)	NO001
Bariatric Foot Extension (BF542)	BF493	Perineal Post Arthroscopic	BF783
Carbon Fiber Extension (TA00006)	BF495	Radial AV Fistula Board (TA00003)	BF494
Cone-Shaped Headrest (BF215)	BF83	Split Leg Positioner, Left (BF351)	BF351000337
EZ/PowerLift Beachchair, Body Section (BF045, BF590, BF594)	BF442	Split Leg Positioner, Right (BF351)	BF351000338
EZ/PowerLift Beachchair, Right Shoulder (BF045, BF590, BF594)	BF443	T-Shaped Sacral Rest (BF00073)	BF824
EZ/PowerLift Beachchair, Left Shoulder (BF045, BF590, BF594)	BF444	Transfer Board OrthoVision (BF213)	BF818
Fem/Pop Board (BF287)	BF817	TrenStop Cervical Pad	BF72877
Foot Extension (BF2)	BF816	TrenStop Shoulder Support Pad (BF728)	BF72876
Hip Rest (BF00072)	BF827	Twin Perineal Post (BF773)	BF687
IA Board OrthoVision (BF00025)	BF828	Twin Perineal Post, 7" Short (BF002)	BF004
IA Extender (BF188)	BF829	Urology Transfer Board (BF204)	BF82
Infant Table Extension (BF324)	P136807025	Wide Wedge Sacral Rest (BF772)	BF684
IV Armboard (BF141, BF363)	BF326	Wedge-Shaped Sacral Rest Adult (BF00066)	BF825
Micro-Surgical Arm and Hand Table (BF436)	BF811	Wedge-Shaped Sacral Rest Child (BF00048)	BF826
		Armboard Pad 26" x 6" (Skytron)	BFP200302005
		Armboard Pad 24" x 6" (Shampaine)	BFP200603305

### 3" TLT REPLACEMENT PADS

TYPE	PRODUCT #	TYPE	PRODUCT #
9" Urology Extension (BF578)	BF00001	IV Armboard (BF141, BF364)	BF327
36" Carbon Fiber Fluoro Extension (BF642)	BF00007	Radial AV Fistula Board (TA00003)	BF00024
Anesthesia Armboard (BF431, BF804)	BF327	Split Leg Positioner, Right (BF351)	BF00012
EZ/PowerLift Beachchair, Body Section (BF045, BF590, BF594)	BF00008	Split Leg Positioner, Left (BF351)	BF00014
EZ/PowerLift Beachchair, Right Shoulder (BF045, BF590, BF594)	BF00009	Urology Transfer Board (BF204)	BF00002
EZ/PowerLift Beachchair, Left Shoulder (BF045, BF590, BF594)	BF00010	Wedge-Shaped Sacral Rest Adult (BF00066)	BF00011

### 4" TLT REPLACEMENT PADS

TYPE	PRODUCT #	TYPE	PRODUCT #
9" Urology Extension (BF578)	BF408	IA Extender (BF188)	BF399
36" Carbon Fiber Fluoro Extension (BF642)	BF403	Infant Table Extension (BF324)	BF405
Adult Arm and Hand Table (BF435)	BF376	IV Armboard (BF141)	BF394
Anesthesia Armboard (BF431)	BF394	Micro-Surgical Arm and Hand Table (BF436)	BF367
Anesthesia Armboard, Concave (BF431)	BF407	Multi-Axis Armboard (BF71239)	BF404
Bariatric Foot Extensions (BF542)	BF366	Multi-Posture Armboard (BF432)	BF375
Cone-Shaped Headrest (BF215)	BF831	Narrow Headrest (BF592)	BF401
Eye-ENT-Neuro Adapter (BF21)	BF406	Pediatric Arm and Hand Table (BF434)	BF377
Fem/Pop Board (BF287)	BF411	T-Shaped Sacral Rest (BF00073)	BF368
Foot Extension (BF2)	BF379	Transfer Board Ortho Extension (BF214)	BF819
Hip Rest (BF00072)	BF372	Transfer Board OrthoVision (BF213)	BF396
IA Board OrthoVision (BF00025)	BF398	Wedge-Shaped Sacral Rest Adult (BF00066)	BF369
		Wedge-Shaped Sacral Rest Child (BF00048)	BF397

### 5" HLT Replacement Pads

TYPE	PRODUCT #
Anesthesia Armboard (BF431)	BF395

# Replacement Accessory Pads

## ADDITIONAL REPLACEMENT PADS

TYPE	PRODUCT #
EZ/PowerLift Beachchair Lateral Brace	BF445
EZ/PowerLift BeachchairHeadrest	BF446
Limb Prepper Replacement Pad	BF025
Patient Safety Rail Single Cover (BF092)	BF094
PowerLift Bariatric Stirrup Pad Replacement Set (Pair)	BF16
PowerLift Bariatric Stirrup, Left	BF191
Power-Lift Bariatric Stirrup, Right	BF192
PowerLift Freedom - Adult 500 Pad Replacement Set (Pair)	BF864
PowerLift Junior Stirrup Pad Replacement Set (Pair)	BF028
PowerLift Pediatric Stirrup Pad Replacement Set (Pair)	BF027
PowerLift Plus - Adult 500 Pad Replacement Set (Pair)	BF865
PowerLift Plus - Bariatric 800 Pad Replacement Set (Pair)	BF866
Power-Lift Stirrup Pad Replacement Set (Pair)	BF222
TenZor Boot Pads w/Straps Adult (Pair)	BF538
TenZor Boot Pads w/Straps Obese Adult (Pair)	BF548
TenZor Boot Pads w/Straps Child (Pair)	BF539
Universal Prepper Replacement Pad	BF026

## 2" TLT BARIATRIC EXTENSIONS PADS

TYPE	APPLICABLE SURGICAL TABLES	PRODUCT #
Complete Set of 8 (BF643, BF661)	5095/5085 SRT/5085 Harmony/5085/4095/4085/ CMAX	BF652
Set of 4 (2 Seat/2 Back) (BF645)		BF654
Set of 2 (Head Section) (BF647)		BF656
Set of 2 (Leg Section) (BF649)		BF658
Complete Set of 8 (BF541)	3080/3085	BF543
Set of 4 (2 Seat/2 Back) (BF553)		BF544
Set of 2 (Head Section) (BF554)		BF545
Set of 2 (Leg Section) (BF555)		BF546

## 3" TLT BARIATRIC EXTENSIONS PADS

TYPE	APPLICABLE SURGICAL TABLES	PRODUCT #
Complete Set of 8 (BF661)	5095/5085 SRT/5085 Harmony/5085/4095/4085/ CMAX	BF00003
Set of 4 (2 Seat/2 Back) (BF662)		BF00004
Set of 2 (Head Section) (BF663)		BF00005
Set of 2 (Leg Section) (BF664)		BF00006

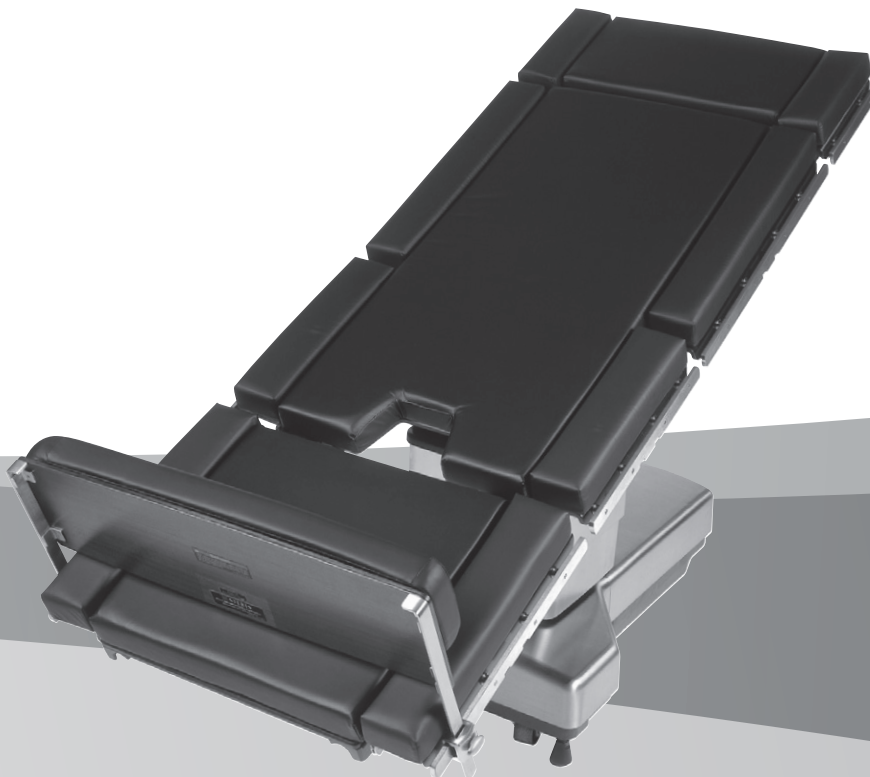


### 4" TLT BARIATRIC EXTENSIONS PADS

TYPE	APPLICABLE SURGICAL TABLES	PRODUCT #
Complete Set of 8 (BF643, BF661)	5095/5085 SRT/5085 Harmony/5085/4095/4085/CMAX	BF653
Set of 4 (2 Seat/2 Back) (BF646)		BF655
Set of 2 (Head Section) (BF648)		BF657
Set of 2 (Leg Section) (BF651)		BF659
Complete Set of 8 (BF541)	3080/3085	BF556
Set of 4 (2 Seat/2 Back) (BF553)		BF557
Set of 2 (Head Section) (BF554)		BF558
Set of 2 (Leg Section) (BF555)		BF559

### 5" TLT BARIATRIC EXTENSIONS PADS

TYPE	APPLICABLE SURGICAL TABLES	PRODUCT #
Complete Set of 8 (BF661)	5095/5085 SRT/5085 Harmony/5085/4095/4085/CMAX	BF00015
Set of 4 (2 Seat/2 Back) (BF662)		BF00017
Set of 2 (Head Section) (BF663)		BF00021
Set of 2 (Leg Section) (BF664)		BF00022





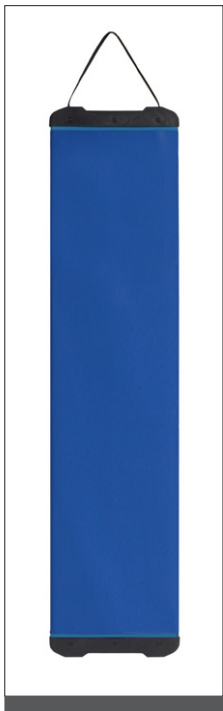
# Patient Transfer Accessories

## Roller-Free Patient Transfer Boards

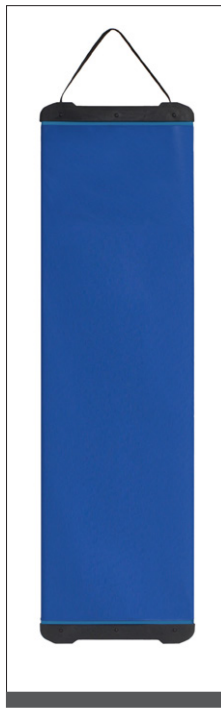
- ▶ Roller-free medical transfer board for easy patient movement
- ▶ Comfortable, soft core medical transfer board with no hard metal roller
- ▶ Available in (3) lengths and (2) widths to accommodate a variety of patient populations
- ▶ Patient weight capacity on the transfer board is 500 lbs. (227 kg)

Roller-Free Patient Transfer Boards enable easy transfer of patient to or from the surgical table. They feature a soft core with no hard metal rollers. No lifting is required, even for the heaviest of patients.

The longer boards are foldable and allow for easy transfer in Beach Chair (Fowler's) position. Shorter boards allow for easy transfer in supine or lateral positions. Compatible with all STERIS Surgical Tables



**Patient Transfer Board**  
Long, Narrow  
**BF37A**  
71.5" x 16.5"



**Patient Transfer Board**  
Long, Wide  
**BF36**  
71.5" x 20.5"



**Patient Transfer Board**  
Short, Narrow  
**BF40**  
40" x 16.5"



**Patient Transfer Board**  
Short, Wide  
**BF39**  
32" x 20.5"



**Disposable Covers for Patient Transfer Boards**  
**BF52**  
Sold (50) per case.

For more information, contact your STERIS representative or visit [www.steris.com](http://www.steris.com)