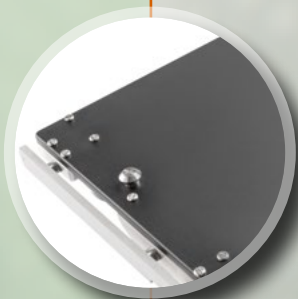


Performance and Versatility

A Table That Simply Does More.

5085 Harmony™ Surgical Table



5085 Harmony Surgical Table

Advancing Care Through Practical Innovation

Get Close to Your Patients

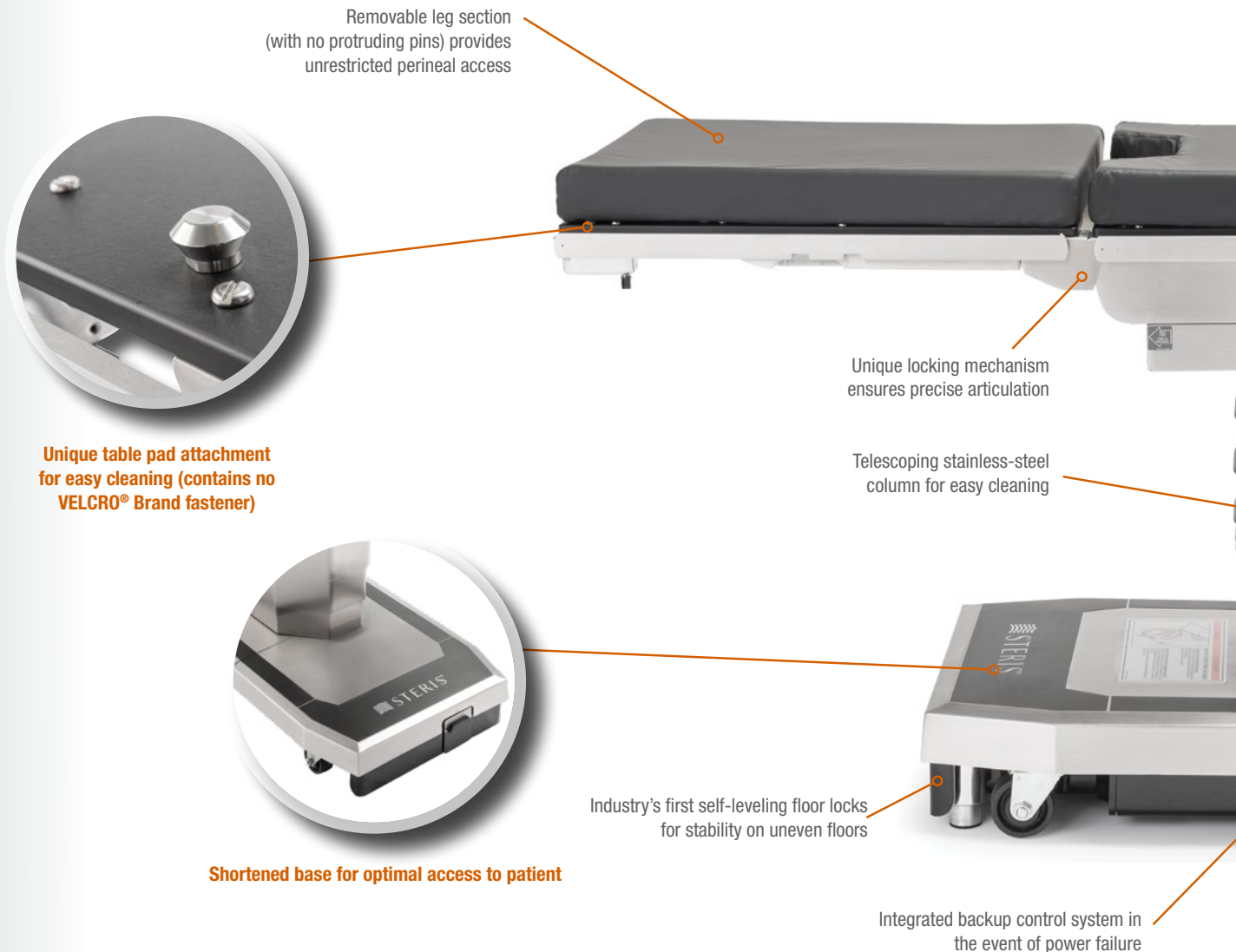
A shorter table base increases surgical access for patient positioning, particularly in Lithotomy positioning.

Contamination Prevention

A flush side rail design that eliminates exposed screws, and a velcro-free mattress attachment that makes the table easy to clean, facilitating OR infection control measures.

Designed with Safety in Mind

A return-to-level button carefully repositions the patient to maintain hemostasis, while auto-limit sensors prevent table damage from colliding sections and informs caregiver of alternative table articulation.





Integrated Manual Override System

Easy access to backup hand control and foot pedal.



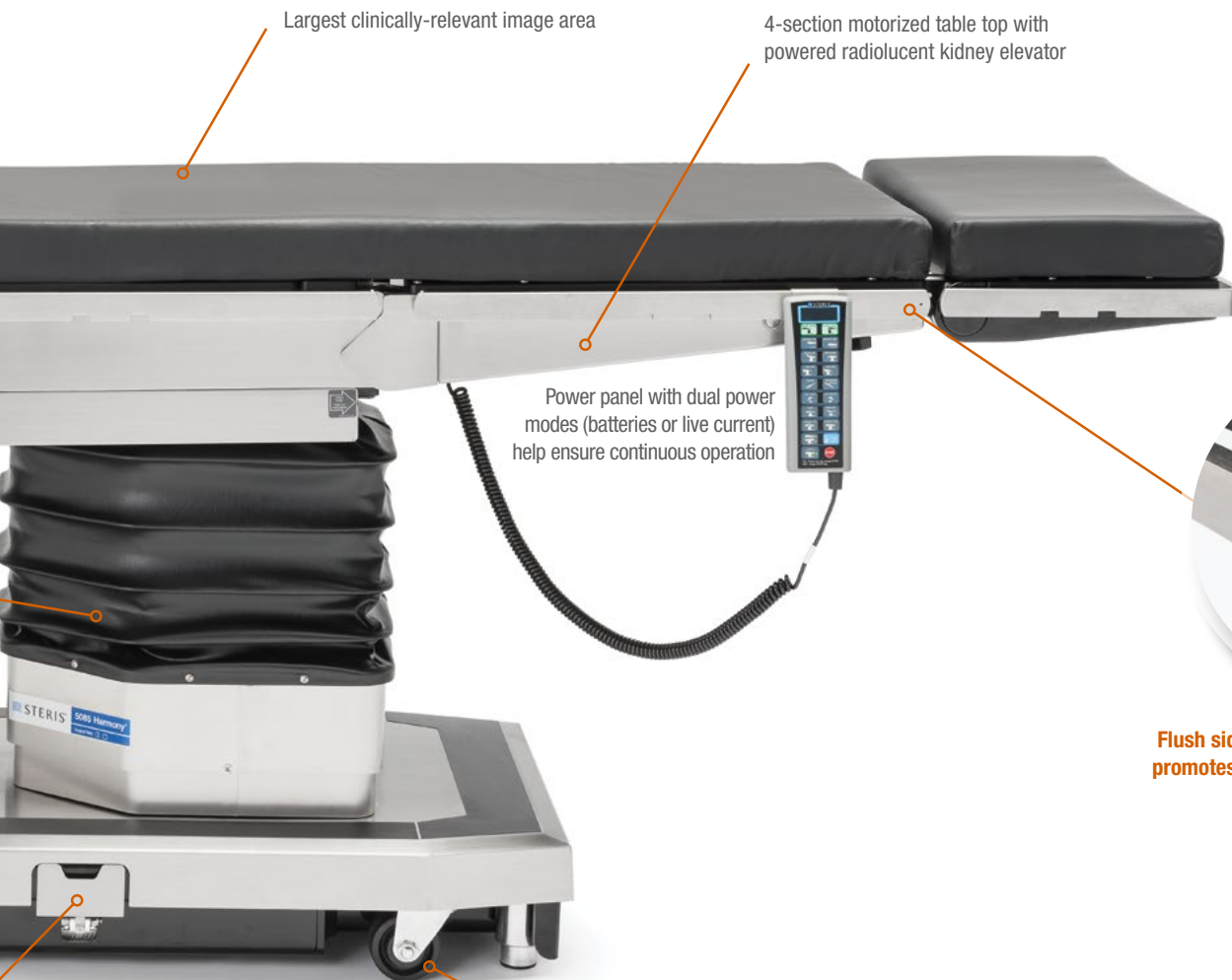
Exceptionally Low Table Height

Accommodates modern MIS, robotic and bariatric procedures.



Universal Hand Control

Ergonomic design and easy-to-read LCD readout display communicates instantaneous table positioning data without lifting the sterile drape.



Largest clinically-relevant image area

4-section motorized table top with powered radiolucent kidney elevator

Power panel with dual power modes (batteries or live current) help ensure continuous operation

Robust casters have ultra-smooth bearings for easy movement



Flush side rails - absence of exposed screws promotes contamination prevention measures

A Large Imaging Area Accommodates More Needs

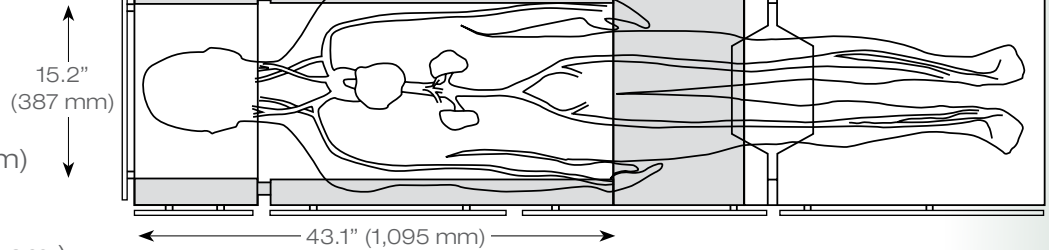
One of the industry's largest imaging areas permits the clear, high quality images crucial to today's MIS, cardiothoracic, orthopedic and neurosurgical procedures. Radiolucent construction provides crisp imaging, while the narrow column and generous longitudinal slide allows 100% access for the C-arm and surgical team without patient reorientation.

Upper Body IA Coverage – Normal Patient Orientation

Table Slid to Head

5085 Harmony Surgical
Table Imaging Length:

- Width: 15.2" (387 mm)
- Length: 43.1" (1,095 mm)
- Total imaging area:
656.8 sq. in. (4,238 sq. cm.)



Common Uses:

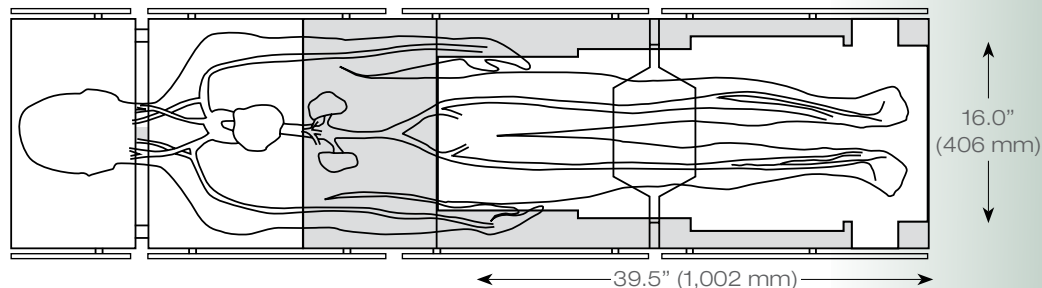
- Pacemaker insertions
- Hickman catheters
- Broviac insertions
- Shunts
- IVC filters
- Cholangiography
- Lung biopsies
- Thoracic and kidney
- Gall bladder
- Total hip revision
- Ophthalmic
- Neurosurgery
- Spinal
- Implantable defibrillation
- Endoscopy

Lower Body IA Coverage

Table Slid to Foot

5085 Harmony Surgical
Table Imaging Length

- Width: 16.0" (406 mm)
- Length: 39.5" (1,002 mm)
- Total imaging area:
630.6 sq. in. (4,068 sq. cm.)



Common Uses:

- Lower body arterial imaging
- Lower limb, non-traction orthopedics
- Femoral/popliteal bypass
- Laser angioplasty

Versatility is its Specialty



The 5085 Harmony Surgical Table quickly and easily adapts to the workflow of virtually every surgical specialty. A single table accommodates the following procedures and more:

- Cardiothoracic
- Endovascular
- Bariatric
- Robotic
- ENT/Ophthalmology
- Orthopedic
- Gynecologic/Obstetric
- Urologic/Kidney

Strong, Yet Flexible

Higher weight capacities accommodate heavier patients and allow for more bariatric surgeries. The 5085 Harmony Surgical Table provides an exceptionally low height for MIS, robotic and bariatric techniques without sacrificing the height needed for orthopedic and cardiac procedures.



Lighten Your Workload

Featherweight Leg Section

This modular, 24-inch removable leg section's carbon fiber construction makes it strong and ideal for imaging. It surpasses AORN guidelines for repeated lifting in the OR at only 14 lbs.

Short Featherweight Flexibility

Also available in an 18-inch length for convenience in orthopedic, gynecological and urological procedures. You can articulate the leg section down to -105° enabling you to leave the leg section attached during the procedure. The table can go down to a low position of 26 inches. Improve the ease and ergonomics of procedures by achieving a low height for a more comfortable position, especially when seated.



5085 Harmony Surgical Table Technical Specifications

A Family Built on Efficiency, Quality and Productivity

The STERIS Surgical Table Product Line

From versatile ambulatory surgery centers to state-of-the-art robotic suites, STERIS offers a table for every modern OR need. And backed by the industry's most comprehensive support network, each table delivers exceptional safety, quality and productivity, assuring the very best return on your table investment.



Features	5085 Harmony™ Surgical Table
Table Length	81" (2,057 mm)
Table Width	20" (508 mm) (28" with extenders)
Table Height Range	22.8" to 42.5" (581 to 1080 mm)
Tabletop Slide Range	9" (227 mm) to head, 9" to foot
Table Shipping Weight	820 lbs. (372 kg)
Trendelenburg / Reverse	30° / 30°
Lateral Tilt (left/right)	20° / 20°
Head Section	+90° to -90° (15° increments)
Back Section	+82° to -40° (reverse)
Leg Section	0° to -105°
Flex/Reflex	140° / 98°
Manual Override	Yes
Perineal Cut-out	Yes
Kidney Elevator	4" (102 mm) powered

Patient Weight Capacity

1,200 lb. (544 kg) patient support, including raise/lower (when centered on the column in Normal Orientation)

900 lb. (408 kg) full table articulation (when centered on the column in Normal Orientation)

600 lb. (272 kg) full table articulation, including slide

For more information, contact your STERIS representative or visit www.steris.com/products/surgical-tables to learn more.

VELCRO® is a registered trademark of Velcro BVBA. Used with permission.