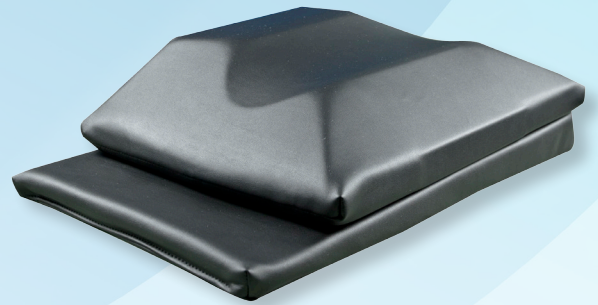
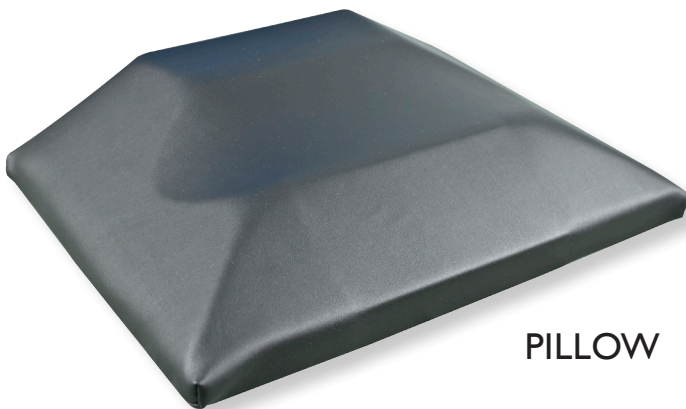


New!
Interventional Supine Pillow System



- *Supports patient's neck in a position of comfort to reduce muscle spasm*
- *Secures the cervical spine in either neutral or rotation*
- *Creates an unobstructed working space for physicians' hands*
- *Fully adjustable for both patient and physician needs*



PILLOW



SUPPORT WEDGE

Interventional Supine Pillow System

Primarily designed to facilitate cervical transforaminal injections, but useful for other antero-lateral procedures as facet injections, medial branch blocks, stellate ganglion blocks, scalene injections, brachial plexus blocks and discography.



- Head easily rotates to the opposite side of the injection with comfortable support of the ear and occiput. The dual resistive foam is designed to resist roll back.
- The slightly raised position and beveled sides create a supportive yet unobstructed working space for the physician's hands.
- Relaxed cervical musculature from continuous contact with the neck and upper thoracic spine.



- Reversible for left or right procedures.
- Tapered support wedge can raise or angle the pillow to better fit the patient's habitus, reduce muscle spasm, modify cervical flexion and allow for appropriate target visualization.



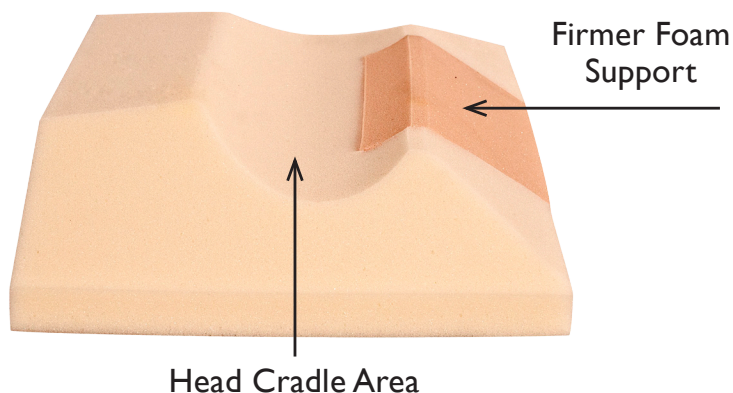
- Highly radiolucent design for optimal imaging.
- Easily cleaned, reusable design

FDA LISTED

raising head to increase cervical flexion

increasing rotation with offset wedge

MSRP \$150.00



OAKWORKS[®]
MEDICAL

(717) 235-6807



ISO 13485:2003
FM 584901