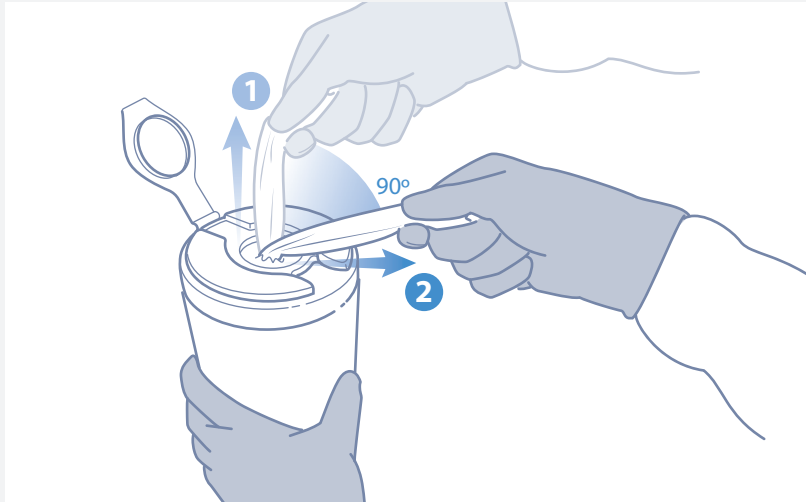


CaviWipes™ 2.0

If visible debris is present on the surface¹:

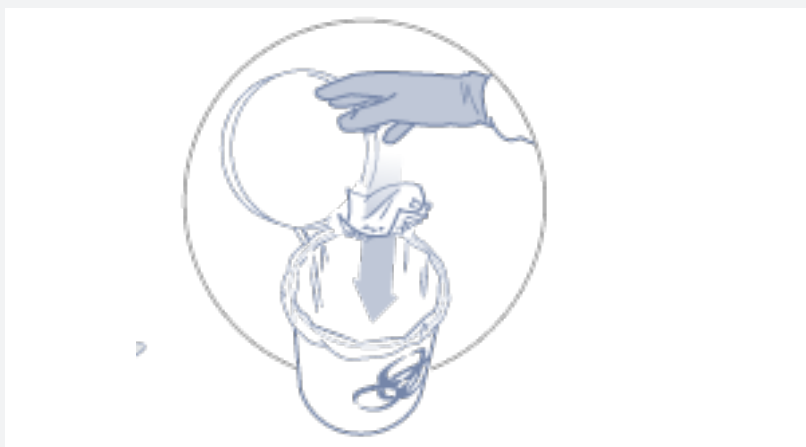
1. Pull out CaviWipes 2.0 towellette, tearing at a 90° angle.



2. Use CaviWipes 2.0 towelette(s) to completely pre-clean surface of all visible debris



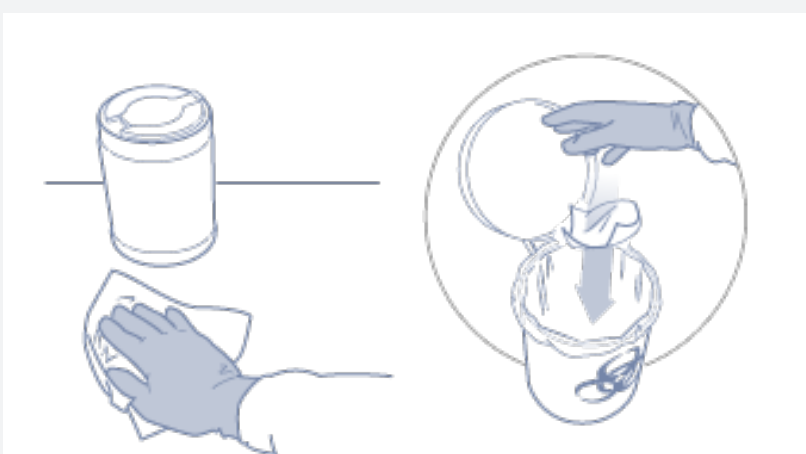
3. Dispose of used towelette in accordance with Federal, State, and local regulations for infectious materials disposal.



Disinfect after Cleaning

4. Pull out additional CaviWipes 2.0 towelette, tearing off at a 90° angle

5. Disinfect precleaned surface with towelette. Leave surface wet for 2 minutes. Dispose of used towelette



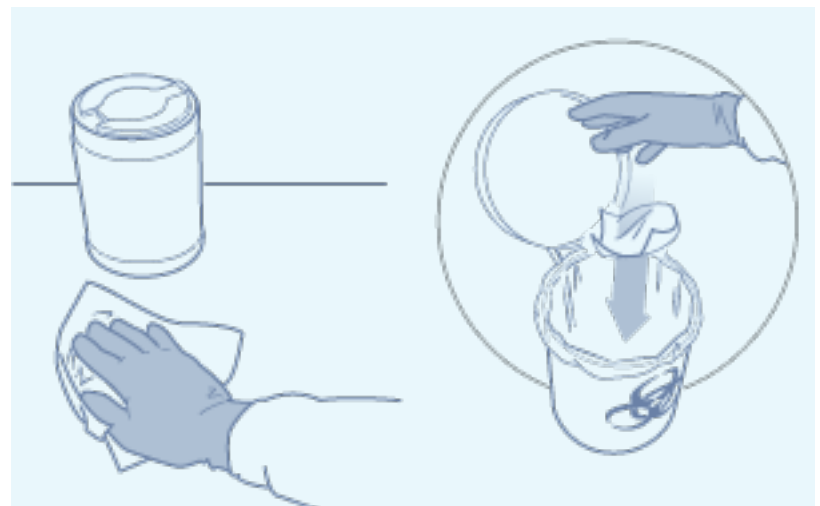
If NO visible debris is present on the surface²:

1. Pull out CaviWipes 2.0 towellette, tearing at a 90° angle.



2. Disinfect surface with towelette. Leave surface wet for 2 minutes.

3. Dispose of used towelette in accordance with Federal, State, and local regulations for infectious materials disposal.



Ordering Information

Part #	Description	Packaging
14-1100	CaviWipes 2.0 (6" x 6.75") – 160 count	12 canisters/case
14-1150	CaviWipes 2.0 EXTRA LARGE (9" x 12") – 65 count	12 canisters/case



1. Always following Directions for Use on product label.
2. Follow Special Cleaning Instructions for Disinfections against Candida auris, HIV, HBV and HCV.