

Hill-Rom CareAssist™ Bed



At a glance

- One-button Dining Chair™ position for patient comfort and safety
- Shearless Pivot® mechanism with auto contour means less need for caregivers to reposition patients
- Point-of-Care® controls save caregiver steps
- “Instant CPR” release lever includes a dampened descent, gently lowering the patient and reducing caregiver back strain
- Patient pendant is stowable in any siderail
- Higher headboard makes moving the bed easier
- Durable bed exit system minimizes false alarms
- Easy-to-read Line-of-Sight® angle indicators for degree of head section and Trend and reverse Trend
- Four dual-locking casters keep the bed in place
- Built-in bed extender
- Bed and mattress are designed to address main entrapment areas

Introducing the bed dedicated to comfort, safety, and efficiency

The CareAssist bed sets a new standard for patient safety and comfort—and for making caregivers more effective. Dozens of design innovations, ranging from improved braking, enhanced patient positioning, and easier-to-use controls, make this bed the one that meets the needs of everyone in the care setting. Even the appearance of the bed gives a contemporary look to the room.

Hill-Rom CareAssist™ Bed

Controls that keep you in touch with your patient

The CareAssist bed controls are designed to support the caregiver's focus on the patient. A one-touch control moves the patient easily into a Dining Chair™ position for added comfort, and patient controls snap directly into the bed rail for easy access. All controls are intuitive, using international symbols where applicable.



Keeping patients comfortably in position

Designed to increase patient comfort, the CareAssist bed offers Hill-Rom's unique combination of Shearless Pivot® and auto contour mechanisms to keep your patients comfortably positioned in bed. As the head section articulates upward, the back section moves outward (Shearless Pivot mechanism) and the knee section moves upward (auto contour). This series of articulations reduces the need for caregivers to reposition patients.

Easy to move, easy to keep stationary

The CareAssist bed is designed to be moved safely and easily. The raised headboard allows caregivers to stay upright, in an ergonomically correct position, while they push the bed. High quality medical grade Tente® casters also aid maneuverability. Stopping is just as easy and secure. With CareAssist's central braking system, a single press of the brake bar locks all the wheels. Additionally, all four casters lock in two directions, not just one, for added patient safety. An auditory alert sounds when the brakes are released and the bed is still plugged in.



Battery backup for mobile care

When a patient is being transported, the CareAssist bed's safety and comfort can go along. All nursing features and patient comfort features can operate without external power, using the standard battery back-up feature.





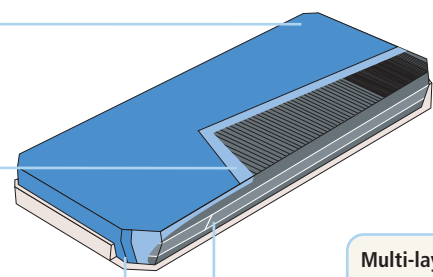
A mattress designed for comfort and protection

A Comfortline mattress, specially developed for the CareAssist bed, is made wider to decrease the gap between the mattress and the siderail and to address main entrapment areas. Constructed with different ILDs (Indentation Load Deflection) and densities, the high resiliency foam addresses the needs of each body section, with special emphasis on the vulnerable heel area.

Hytex Poly™ cover
is antimicrobial, anti-fungal, and promotes skin respiration

Shearless liner
protects the skin

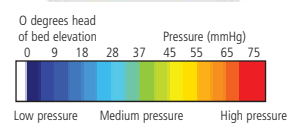
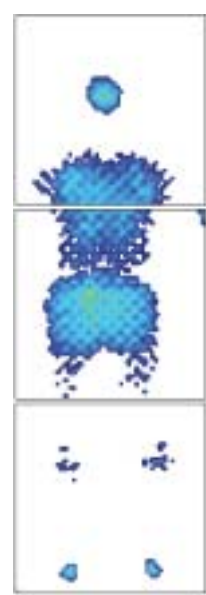
Mattress ticking seams
are RF welded for added durability



Multi-layered mattress,
including firm perimeter foam, for precise body support

Pressure mapping for the CareAssist™ Bed Comfortline® Mattress

Test subject:
5' 10" male; 163 lbs.
32 years old
0° head of bed elevation



Key Features of the CareAssist™ Bed



One-button Dining Chair™ position keeps patients comfortable and reduces the need to move patients to alternate seating.



Four-wheel dual locking brake system with brake-off alarm keeps patients safe during ingress and egress.

Auto contour and Shearless Pivot® features minimize patients from sliding forward and decrease the need to reposition patients.

Hill-Rom CareAssist™ Bed



CareAssist™ Bed value package configurations

	Model		
	P1170 CA100	P1170 CA200	P1170 CA300
Embedded Caregiver Controls—Electric adjustment for height, head, knee, foot, Trend/reverse Trend and Dining Chair™ position	✓	✓	✓
Battery-backup	✓	✓	✓
Patient Controls—Head/Knee (available as stowable pendant)	✓	✓	
Patient Controls—Head/Knee with nurse call, entertainment and lighting (available as stowable pendant). Requires selection of SideCom® PC board (see options)			✓
Nurse Call—embedded in siderail for patient and caregiver			✓
Bed Exit System—local alarm only		✓	
Bed Exit System—integrated with Nurse Call and local alarm			✓
CareAssist bed Comfortline® mattress with fire barrier (P731EA3)	Optional	Optional	Optional
Foot Extender Pad with fire barrier (P734EA1)	Optional	Optional	Optional

Optional SideCom PC Board (for interface with hospital's TV system): Universal TV (P1170CA300), 5-Wire Zenith (P1170CA301), Standard Analog TV (P1170CA302)—Choose one only for CA300 packages

Accessories: Oxygen tank holder, Standard IV pole, ISS pole, Socket adapter (for use with ISS pole)

Technical data

Frame width39.74" (100.95 cm)	Low position floor to deck 15.75" (40 cm)
Frame length with head and foot board (w/ bumpers)	High position floor to deck 32.24" (81.90 cm)
normal90.04" (228.71 cm)	Max head elevation 68 degrees
extended94.04" (238.86 cm)	Max Trend and reverse Trend 16 degrees
Sleep deck	Caster size 6" (15 cm)
width 36.00" (91.44 cm)	Maximum weight limit (safe working load) 400 lbs (181.4 kg)
normal length 80.00" (203.20 cm)	
extended length 84.00" (213.36 cm)	
Bed clearance under frame 5.00" (12.70 cm)	

Hill-Rom reserves the right to make changes without notice in design, specifications and models. The only warranty Hill-Rom makes is the express written warranty extended on the sale or rental of its products.

© 2003 Hill-Rom Services, Inc
ALL RIGHTS RESERVED.

CTG593ra 10/14/03