



FERNO

When it's critical.™

Installation and Users' Manual



Accessory Kit 082-2072 Secure Lock Storage Brackets For Model 59 Series EZ Glide Evacuation Chairs

November 2005 GLO

Pub. No. 234-3340-00

Disclaimer

This manual contains general instructions for the use, operation and care of this product. The instructions are not all-inclusive. Safe and proper use of this product is solely at the discretion of the user. Safety information is included as a service to the user. All other safety measures taken by the user should be within and under consideration of applicable regulations. It is recommended that training on the proper use of this product be provided before using this product in an actual situation.

Retain this manual for future reference. Include it with the product in the event of transfer to new users. Additional free copies are available upon request from Customer Relations.

Proprietary Notice

The information disclosed in this manual is the property of Ferno-Washington, Inc., Wilmington, Ohio, USA. Ferno-Washington, Inc. reserves all patent rights, proprietary design rights, manufacturing rights, reproduction use rights, and sales use rights thereto, and to any article disclosed therein except to the extent those rights are expressly granted to others or where not applicable to vendor proprietary parts.

© Copyright Ferno-Washington, Inc. All Rights Reserved.

Ferno-Washington, Inc.
70 Weil Way
Wilmington, OH 45177-9371 U.S.A.

Telephone (Toll Free) 1.877.733.0911
Telephone +1.937.382.1451
Fax (Toll Free) 1.888.388.1349
Fax +1.937.382.6569
Internet www.ferno.com

TABLE OF CONTENTS

Section	Page	Section	Page
1 - Safety Information	4	4 - Using the Brackets	10
1.1 Warning	4	4.1 Securing the Chair In the Brackets	10
1.2 Important	4	4.2 Removing the Chair From the Brackets	10
1.3 Bloodborne Disease Notice	4	5 - Maintenance	11
2 - About the Brackets	4, 5	5.1 Maintenance Schedule	11
2.1 Product Description	4	5.2 Disinfecting and Cleaning	11
2.2 General Specifications	4	5.3 Inspecting the Brackets	11
2.3 Kit Components	4, 5	5.4 Lubrication	11
3 - Installation	6-9	6 - Replacement Parts	12
3.1 Selecting the Mounting Surface and Fasteners ...	6	6.1 Parts and Service - U.S.A. and Canada	12
3.2 Selecting a Mounting Location	6	6.2 Parts and Service - Worldwide	12
3.3 Tools Required	6	6.3 Parts List	12
3.4 Additional Parts Needed	6	7 - Limited Warranty Statement	12
3.5 Mounting the Bottom Bracket	7	8 - Ferno Customer Relations	12
3.6 Mounting the Top Bracket	8,9	Bottom Bracket Template	13
		Top Bracket Template	15

Illustrations

Kit Components	5	Figure 10 - Removing Bracket and Chair from Template	9
Figure 1 - Minimum Mounting Space Required	6	Figure 11 - Drilling the Mounting Holes	9
Figure 2 - Bottom Template Taped to Bracket	7	Figure 12 - Mounting Top Bracket	9
Figure 3 - Re-marking Holes on Template	7	Figure 13 - Chair Crosstube in Bracket	10
Figure 4 - Drilling the Mounting Holes	7	Figure 14 - Capturing Lift Bar in Bracket	10
Figure 5 - Mounting Bottom Bracket	7	Figure 15 - Lift Bar Captured in Bracket Latch	10
Figure 6 - Re-mark Holes on Top Template	8	Figure 16 - EZ Glide Chair Stored in Secure Lock Mount	10
Figure 7 - Chair Resting in Bracket Cradle	8	Figure 17 - Releasing Chair from Bracket	10
Figure 8 - Bracket/Template Centered and Latched on Lift Bar (Above: front. Below: side)	8	Serial Number Location	12
Figure 9 - Sides of Template Taped to Wall	9		

1 - SAFETY INFORMATION

1.1 Warning

Warning notices indicate a potentially hazardous situation which, if not avoided, could result in injury or death.

WARNING

Improper use of the brackets can cause injury. Use the brackets only for the purpose described in this manual.

Improper maintenance can cause injury. Maintain the brackets only as described in this manual.

Improper parts can cause injury. Use only Ferno parts on the brackets.

Modifying the brackets can cause injury and damage. Use the brackets only as designed by Ferno.

1.2 Important

Important notices emphasize important usage or maintenance information.

Important

It is the responsibility of the installer to select mounting points and mounting fasteners that will support the chair and brackets under all conditions of use.

1.3 Bloodborne Disease Notice

To reduce the risk of exposure to bloodborne diseases such as HIV-1 and hepatitis when using the brackets, follow the disinfecting and cleaning instructions in this manual.

2 - ABOUT THE BRACKETS

2.1 Product Description

Accessory Kit 082-2072 contains the Secure Lock Storage Brackets (referred to as the bracket(s) in this manual), a two-bracket storage system for use with a Model 59, Model 59-T, or Model 59-E EZ Glide Evacuation Chair.

The brackets may be mounted on the wall of an ambulance or building. The bottom bracket supports the rear-wheel crosstube of the folded chair. The top bracket grasps the chair's lift bar.

WARNING

Improper use of the brackets can cause injury. Use the brackets only for the purpose described in this manual.

2.2 General Specifications

Weight

Brackets Only 7.7 lb (3.5 kg)

Brackets + Chair

Maximum Weight* 47.7 lb (21.6 kg)

* Maximum combined weight includes chair, brackets, patient restraints, IV Bag Holder, Locking Auxiliary Handles, and Headrest Assembly. Ferno reserves the right to change specifications without notice.

2.3 Kit Components

1 ea Top Bracket
1 ea Bottom Bracket
1 ea Installation and Users' Manual
1 ea Template for Bottom Bracket (Page 13)
1 ea Template for Top Bracket (Page 15)

2.3 Kit Components (continued)

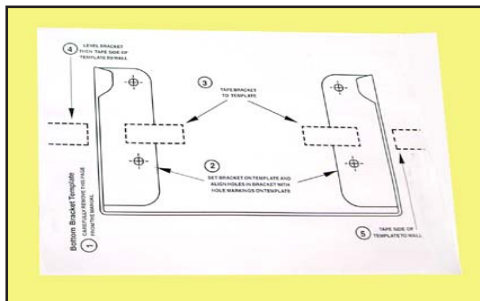
**BOTTOM
BRACKET**



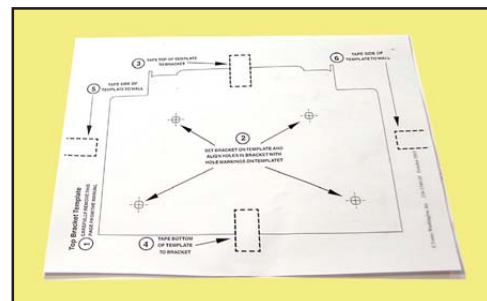
**TOP
BRACKET**



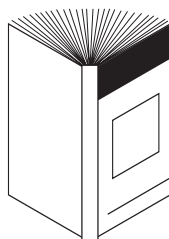
BOTTOM TEMPLATE



**TOP
TEMPLATE**



INSTALLATION AND USERS' MANUAL



To request additional free Installation and Users' Manuals, contact Ferno Customer Relations (Page 12) or visit us at www.ferno.com

3 - INSTALLATION

3.1 Selecting the Mounting Surface and Fasteners

Because of the varying conditions of use and the variety of surfaces that might be selected for mounting the brackets, Ferno cannot recommend specific mounting fasteners.

It is the responsibility of the installer to select mounting points and mounting fasteners that are strong enough to support the brackets and chair under all conditions of use.

If the brackets are to be mounted in an ambulance, backing plates or other support (not supplied) may be needed, and the fasteners used should be SAE Grade 5, UNC 2.

3.2 Selecting a Mounting Location

Select a mounting surface strong enough to support the weight of the brackets and chair under all conditions of use.

The available mounting space must be at least 21 in. wide by 42 in. high (53.3 cm wide by 106.6 cm high). See Figure 1.

The height allows clearance for raising the latch handle and the width accommodates the overall width of the chair.

Do not use these figures to calculate placement of fasteners. Follow the mounting instructions and use the templates provided on Pages 13 and 15.

3.3 Tools Required

- Level
- Masking tape
- Pencil
- Measuring tape
- Screwdriver or wrench
- Drill
- Drill bit

3.4 Additional Parts Needed

- 8 ea Appropriate Mounting Fasteners
(see Section 3.1 above)

Important

It is the responsibility of the installer to select mounting points and mounting fasteners that will support the chair and brackets under all conditions of use.

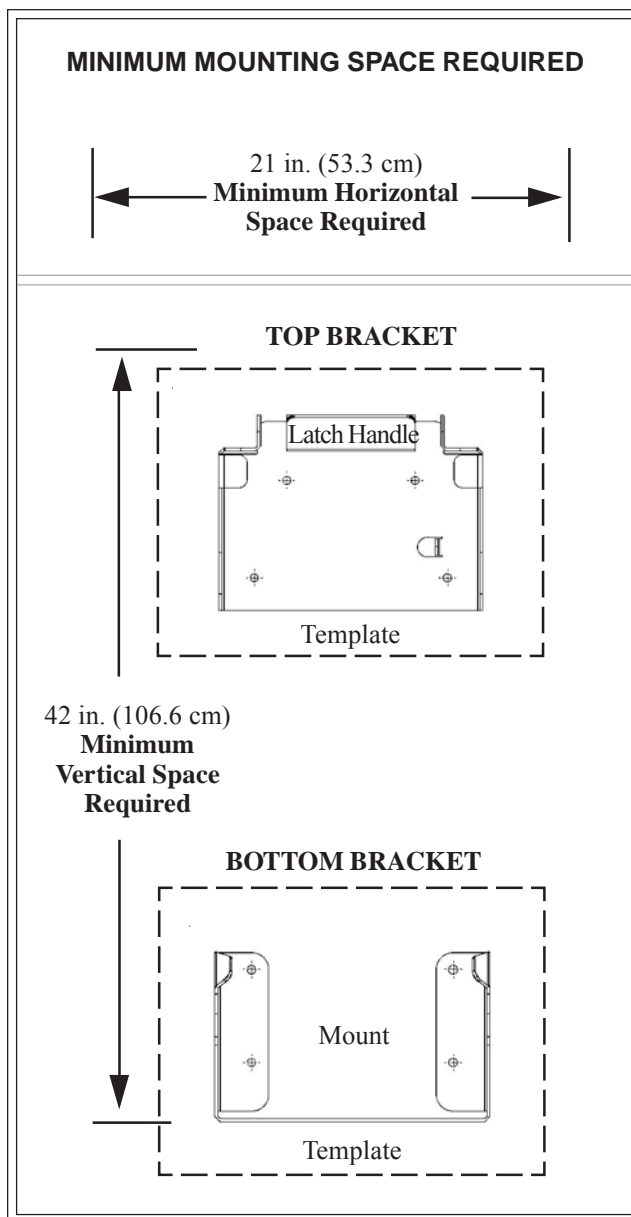


Figure 1

3.5 Mounting the Bottom Bracket

Important

To ensure proper fit of the chair in the brackets, the bottom bracket must be mounted before the top bracket. Follow installation instructions in this section (3.5), then in Section 3.6.

Important

An improper installation surface, fastener, or location can result in an unsatisfactory or unsafe installation. Read and follow instructions in Sections 3.1 and 3.2 on Page 6 before beginning your installation.

1. The template for mounting the bottom bracket is on Page 13. Remove and use the entire page.
2. Set the bottom bracket on the template, aligning the bottom holes in the bracket with the bottom hole markings on the template.

Note: Because of tolerance variation during manufacture, the bracket holes may not align perfectly with the hole markings on the template. Align them as evenly as possible.

3. Tape the template to the bracket flanges as indicated on the template (Figure 2).
4. To ensure accuracy, re-mark the four mounting points onto the template through the bracket holes (Figure 3).
5. Hold the bracket/template unit against the installation location on the wall and **use a level to make sure the bracket is straight.**
6. Tape the sides of the template to the wall as indicated on the template.
7. Peel the tape back from the flanges of the bracket and lift the bracket off the template. **Leave the template taped on the wall.**
8. Drill the holes for the fasteners (Figure 4) and mount the bracket (Figure 5).
9. Verify the bracket is securely fastened to the wall.

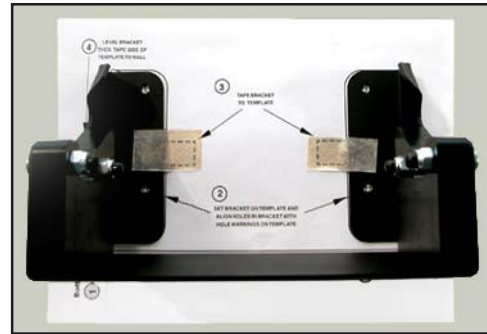


Figure 2 - Bottom Template Taped to Bracket



Figure 3 - Re-marking Holes on Template

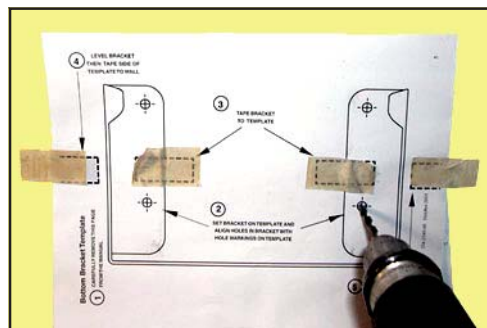


Figure 4 - Drilling the Mounting Holes



Figure 5 - Mounting Bottom Bracket

3.6 Mounting the Top Bracket

1. The template for mounting the top bracket is on Page 15. Remove and use the entire page.
2. Set the top bracket on the template, aligning the holes in the bracket as evenly as possible with the hole markings on the template.
3. Tape the template to the bottom edge and top flange of the bracket.
4. To ensure accuracy, re-mark the four mounting points onto the template through the bracket holes (Figure 6).
5. Place the lift bar of the EZ Glide Chair in the lowest position, then fold the chair and check to make sure it is locked.
6. With the chair seat facing you, stand the rear-wheels crosstube of the folded chair in the cradle of the bottom bracket (Figure 7).
7. Attach the top bracket (with template) to the lift bar of the chair (see Step 3, *Using the Brackets*, Page 10 for instructions.) Make sure the bracket is centered on the lift bar (Figure 8, two views).



Figure 6 - Re-mark Holes on Top Template

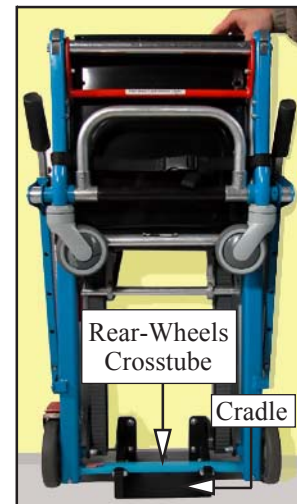


Figure 7 - Chair Resting in Bracket Cradle

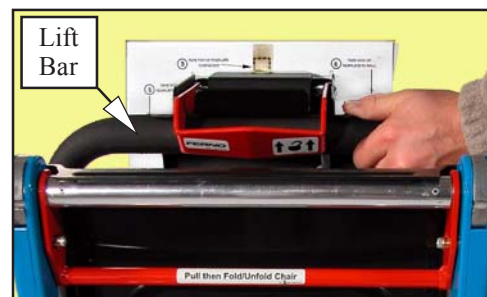
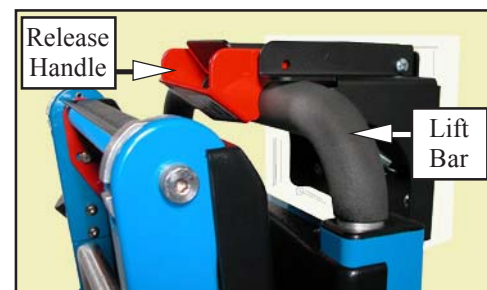


Figure 8 - Bracket/Template Centered and Latched on Lift Bar
(Above: front view. Below: side view)



8. **Hold the template and back of the bracket flush against the wall** and tape the sides of the template to the wall as indicated on the template (Figure 9).
9. Peel the tape back from the top and bottom of the bracket and lift the bracket and chair off the bottom bracket, **leaving the template taped to the wall** (Figure 10).
10. Drill the four holes for the fasteners (Figure 11).
11. Mount the bracket (Figure 12).
12. Verify that the bracket is securely fastened to the wall.

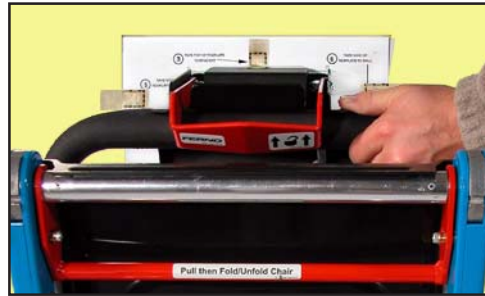


Figure 9 - Sides of Template Taped to Wall



Figure 10 - Removing Bracket from Template (and Chair from Lower Bracket)

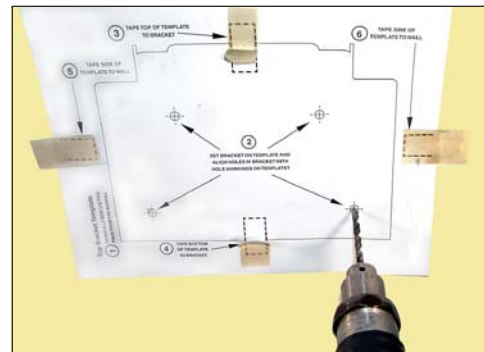


Figure 11 - Drilling the Mounting Holes



Figure 12 - Mounting Top Bracket

4 - USING THE BRACKETS

4.1 Securing the Chair in the Brackets

1. Place the lift bar in its lowest position, then fold and lock the chair.
2. Hold the chair with the folded seat facing you and rest the rear-wheels crosstube in the cradle of the bottom bracket (Figure 13).
3. Firmly push the lift bar against the lower edge of the bracket release handle (Figure 14) until the handle latch captures the lift bar (Figure 15). Press down on the release handle to make sure the capture is complete.

When secured in both brackets, the chair will look like the one in Figure 16.

4. Verify that the chair is secure in both brackets.

4.2 Removing the Chair From the Brackets

Raise the red release handle (Figure 17), tilt the chair forward, and lift it out of the bottom-bracket cradle.

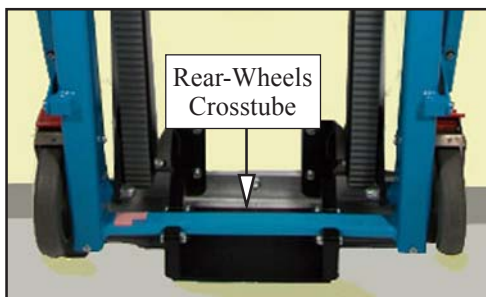


Figure 13 - Chair Crosstube in Bracket

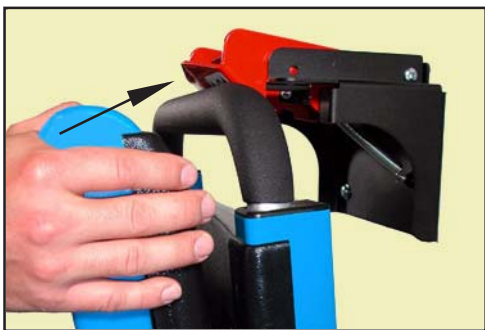


Figure 14 -Capturing Lift Bar in Bracket



Figure 15 - Lift Bar Captured in Bracket Latch



Figure 16 - EZ Glide Chair in Storage Brackets



Figure 17 - Releasing Chair from Bracket

5 - MAINTENANCE

5.1 Maintenance Schedule

The brackets require regular maintenance. Set up and follow a maintenance schedule. The table at the right represents minimum intervals for maintenance.

When using maintenance products, follow the manufacturers' directions and read the manufacturers' material safety data sheets. You can purchase a recommended disinfectant from your Ferno distributor or Ferno Customer Relations (Page 12).

5.2 Disinfecting and Cleaning

Disinfect, clean, and inspect the mount at regular intervals.

To disinfect the brackets: Remove the chair from the brackets and wipe or spray all bracket surfaces with disinfectant. Follow disinfectant manufacturer's instructions.

Ferno recommends inspecting all parts of the brackets as you disinfect them.

To clean the brackets: Use a nonabrasive applicator to clean the brackets with a solution of warm water and a mild detergent. Rinse with a clean cloth dampened with clean water. Dry with a towel.

5.3 Inspecting the Brackets

Have your equipment maintenance personnel inspect the brackets regularly, following the list at the right. If the inspection shows damage or excessive wear, replace the bracket(s) or remove them from service until repair is made.

5.4 Lubrication

The brackets do not require lubrication.

WARNING

Improper maintenance can cause injury. Maintain the brackets only as described in this manual.

Minimum Intervals for Maintenance

	Each Use	As Needed	Each Month
Disinfecting (this page)	•		
Cleaning (this page)		•	
Inspecting (this page)		•	•

Important

Disinfectants and cleaners containing bleach, phenolics, or iodines can damage the brackets. Use caution when disinfecting and cleaning with products containing these chemicals.

INSPECTION CHECKLIST

- ☐ Are all components present?
- ☐ Are all nuts and bolts securely in place?
- ☐ Does the release handle function properly?
- ☐ Does the release-handle spring function properly?
- ☐ Are top and bottom brackets securely fastened to the wall?

6 - REPLACEMENT PARTS

6.1 Parts and Service - U.S.A. and Canada

To order parts in the U.S.A. and Canada, contact EMSAR® - the only agent authorized by Ferno to manage, service, and repair Ferno products. EMSAR factory-trained technicians use Ferno-approved parts and repair procedures. EMSAR has a franchise serving you. For details, phone, fax, or visit EMSAR's web site.

1.800.73.EMSAR (Phone)
1.937.383.1051 (Fax)
www.EMSAR.com (Internet)

6.2 Parts and Service - Worldwide

To order Ferno parts, contact your Ferno distributor. Your distributor is the only agent authorized by Ferno to manage, service, and repair Ferno products.

! WARNING

**Improper parts and service can cause injury.
Use only Ferno parts on the brackets.**

! WARNING

Modifying the brackets can cause injury and damage. Use the brackets only as designed by Ferno.

6.3 Parts List

Description	Part #
Spring	190-1554
Top Bracket	090-5852
Bottom Bracket	090-5853

7 - LIMITED WARRANTY STATEMENT

The products sold by Ferno are covered by a limited warranty. The actual terms and conditions of the limited warranty, and the limitations of liability and disclaimers, are available upon request by calling 1.800.733.3766 or 1.937.382.1451.

8 - FERNO CUSTOMER RELATIONS

Customer service and product support are important aspects of each Ferno product. Please have the serial number of your brackets available when calling Ferno Customer Relations, and include it in all written communications.

For assistance, please contact Ferno Customer Relations:

Telephone (Toll-free)..... 1.877.733.0911
 Telephone 1.937.382.1451
 Fax (Toll-free) 1.888.388.1349
 Fax 1.937.382.1191
 Internet..... www.ferno.com



Serial Number _____

Bottom Bracket Template

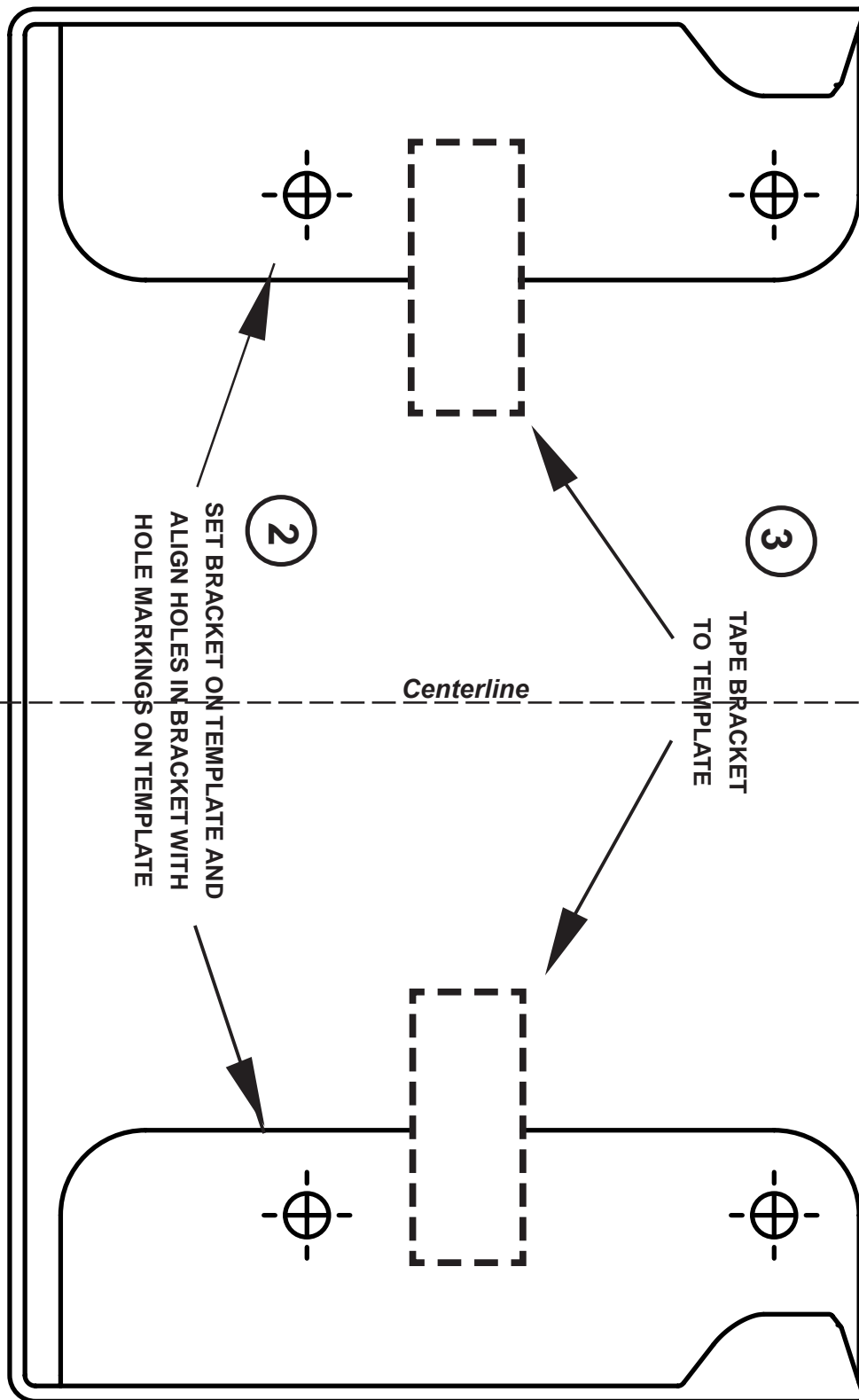
1 CAREFULLY REMOVE THIS PAGE FROM THE MANUAL

4 LEVEL BRACKET THEN TAPE SIDE OF TEMPLATE TO WALL

3 TAPE BRACKET TO TEMPLATE

2 SET BRACKET ON TEMPLATE AND ALIGN HOLES IN BRACKET WITH HOLE MARKINGS ON TEMPLATE

5 TAPE SIDE OF TEMPLATE TO WALL



THIS PAGE LEFT BLANK INTENTIONALLY

Top Bracket Template

1 CAREFULLY REMOVE THIS PAGE FROM THE MANUAL

