

Advanced Wound Care Dressings

Staging Reference Guide

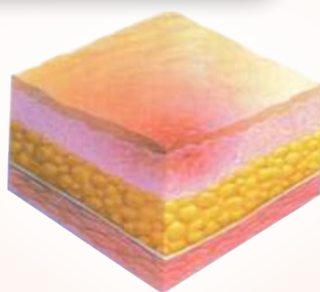


WE CARE LIKE FAMILY™

*Bedsore*s fall into one of four stages based on their severity. The National Pressure Ulcer Advisory Panel, a professional organization that promotes the prevention and treatment of pressure ulcers, defines each stage as follows:



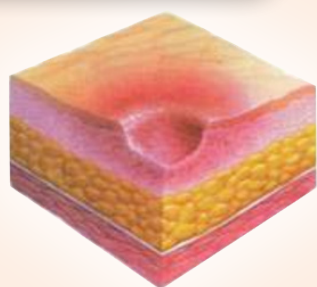
Stage I



A **Stage I** pressure ulcer is an observable pressure related alteration of intact skin whose indicators as compared to the adjacent or opposite area on the body may include changes in one or more of the following:

- Skin temperature (warmth or coolness), tissue consistency (firm or boggy feel) and/or sensation (pain, itching).
- The ulcer appears as a defined area of persistent redness in lightly pigmented skin, whereas in darker skin tones, the ulcer may appear with persistent red, blue, or purple hues.
- The beginning stage of a pressure sore has the following characteristics:
 - The skin is not broken.
 - The skin appears red on people with lighter skin color, and the skin doesn't briefly lighten (blanch) when touched.
 - On people with darker skin, the skin may show discoloration, and it doesn't blanch when touched.
 - The site may be tender, painful, firm, soft, warm or cool compared with the surrounding skin.

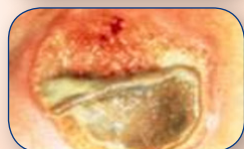
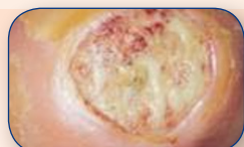
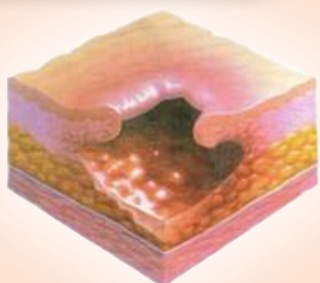
Stage II



At Stage II:

- The outer layer of skin (epidermis) and part of the underlying layer of skin (dermis) is damaged or lost.
- The wound may be shallow and pinkish or red.
- The wound may look like a fluid-filled blister or a ruptured blister.

Stage III



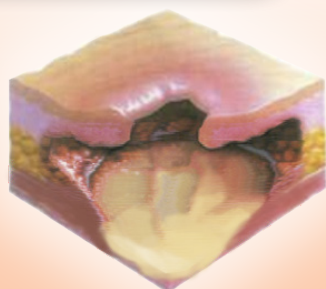
At Stage III, the ulcer is a deep wound:

- The loss of skin usually exposes some fat.
- The ulcer looks crater-like.
- The bottom of the wound may have some yellowish dead tissue.
- The damage may extend beyond the primary wound below layers of healthy skin.

Advanced Wound Care Dressings

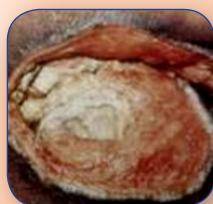
Staging Reference Guide

Stage IV

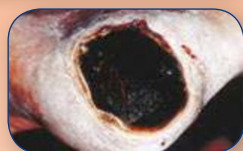


At Stage IV:

- The outer layer of skin (epidermis and part of the underlying layer of skin (dermis) is damaged or lost.
- The wound may be shallow and pinkish or red.
- The wound may look like a fluid-filled blister or a ruptured blister.



Unstageable



At Unstageable: a pressure ulcers surface is covered with yellow, brown, black or dead tissue. It's not possible to see how deep the wound is.

Common sites of pressure sores:


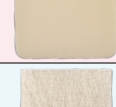

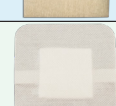


For people who use a wheelchair, pressure sores often occur on skin over the following sites:

- Tailbone or buttocks
- Shoulder blades and spine
- Backs of arms and legs where they rest against the chair

For people who are confined to a bed, common sites include the following:

- Back or sides of the head
- Rim of the ears
- Shoulders or shoulder blades
- Hip, lower back or tailbone
- Heels, ankles and skin behind the knees

ADVANCED WOUND CARE DRESSING PRODUCT LINE

Product		Reorder No.'s and Sizes	Wound Stages (Pressure Ulcers)
		CuraFoam™ Foam Dressing 3011 – 2" x 2" 3012 – 4" x 4" 3013 – 6" x 6"	II, III, IV
		DynaDerm™ Hydrocolloid Dressing (Thin; Extra-Thin; Standard) 3014 – 2" x 2" (Thin) 3015 – 4" x 4" (Thin) 3016 – 6" x 6" (Thin) 3017 – 6" x 6" (Sacral) 3018 – 4" x 4" (Extra Thin) 3019 – 6" x 6" (Extra Thin) 3020 – 4" x 4" (Standard)	II, III, IV
		DynaLevin™ Waterproof Adhesive Bordered Foam 3021 – 4" x 4" 3022 – 6" x 6"	II, III, IV
		Foam Flex™ Non-Adhesive Waterproof Foam Dressing 3023 – 2" x 2" 3024 – 4" x 4" 3025 – 6" x 6"	II, III, IV
		DynaGinate™ Calcium Alginate Dressing 3026 – 2" x 2" 3027 – 4 1/4" x 4 1/4" 3028 – 4" x 8" 3029 – 2g x 30cm	III, IV
		DynaGinate AG™ Silver Calcium Alginate 3030 – 2" x 2" 3031 – 4" x 5" 3032 – 4" x 8" 3033 – 3/4" x 12"	N/A
		DynaGuard™ Waterproof Composite Dressing 3035 – 4" x 4" 3036 – 6" x 6"	II, III, IV
		DynaFoam™ Waterproof Bordered Foam 3037 – 4" x 4" 3038 – 6" x 6"	II, III, IV
		Petroleum Gauze™ Gauze Dressing 3039 – 3" x 9" 3040 – 3" x 9"	II, III, IV
		CuraFoam™ AG Silver Foam Dressing 3047 – 4" x 4"	III, IV
		DynaFoam™ AG Bordered Silver Foam Dressing 3049 – 4" x 4" 3050 – 6" x 6"	III, IV
		SiliGentle™ Silicone Foam Dressing and Silicone Bordered Foam Dressing Non-Bordered 3055 – 2" x 2" 3056 – 4" x 4" 3057 – 6" x 6" Bordered 3058 – 2" x 2" 3059 – 4" x 4" 3060 – 6" x 6" 3061 – Heel 4" x 4" 3062 – Sacral 6" x 6" 3063 – Lg Sacral 6" x 6"	II, III, IV
		DynaGel™ Hydrogel Impregnated Gauze Dressing 3064 – 2" x 2" 3065 – 4" x 4"	II, III, IV

dynarex® is your one-stop medical supply company since 1967

For more information contact your local Dynarex® distributor sales representative.

Or call 888-396-2739 to find your nearest distributor.

10 Glenshaw Street • Orangeburg, NY 10962 • www.dynarex.com



Find us on:

