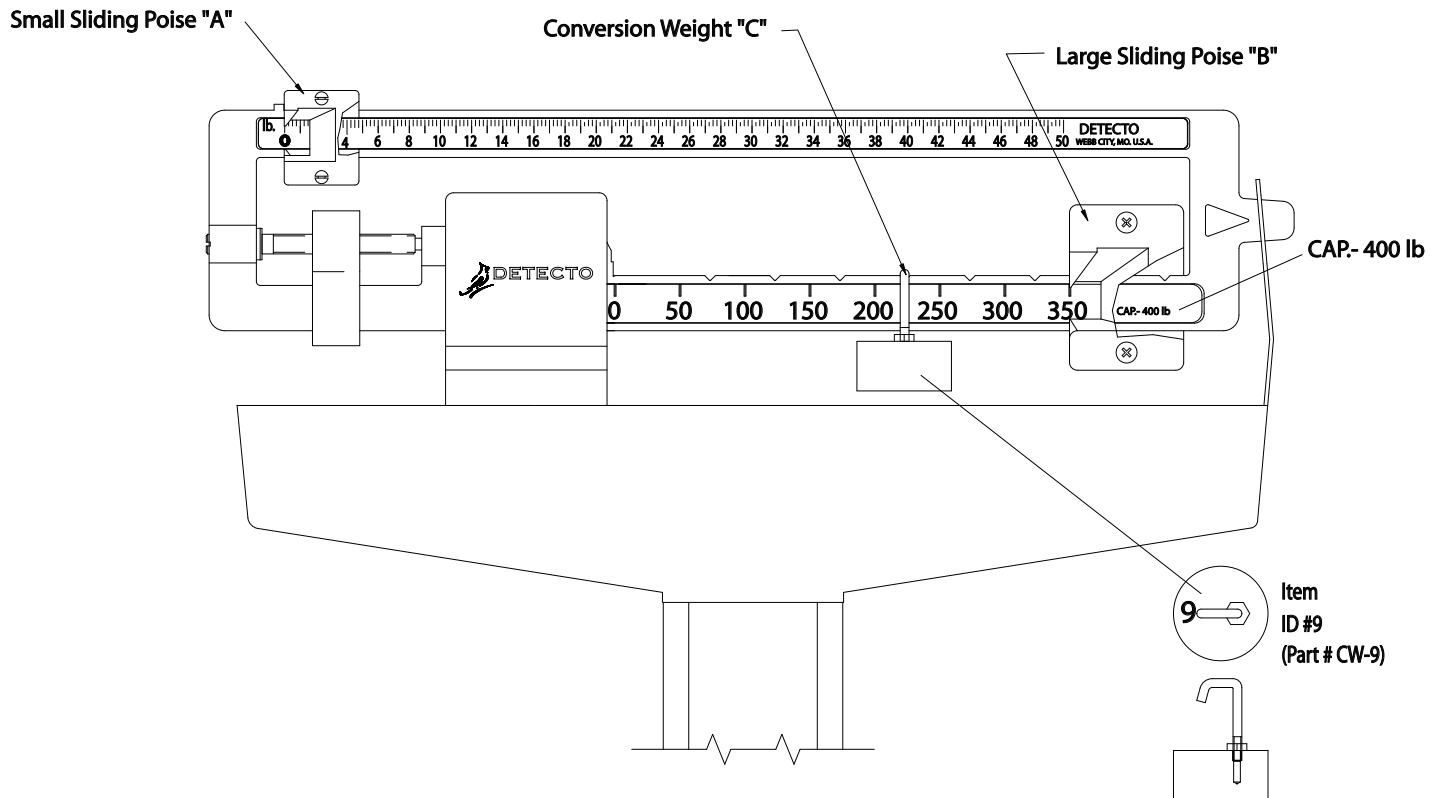


Instructions for Using a 400 lb to 500 lb Conversion Weight, ID #9



1. Do not use conversion weight "C" when weighing up to 400 lb..
2. From 400 lb. to 450 lb., place the large sliding poise "B" at the 350 lb. position and hang conversion weight "C" at notch shown between the 200 and 250 lb. graduations then slide small sliding poise "A" until scale balances.
3. From 450 lb. to 500 lb. place the large sliding poise "B" at the 350 lb. position and hang conversion weight "C" at notch shown between the 250 and 300 lb. graduations then slide the small sliding poise "A" until scale balances

NOTE: Conversion weight "C" hanging in position, specified above, will add 100 lb. to the reading of lower beam.

IMPORTANT: Conversion weight must be placed exactly as shown to weigh correctly.

NOTE: TO BE USED ON MODELS 437, 438, 439 WITH 400 POUND CAPACITY BEAMS



203 E. Daugherty, Webb City, MO 64870 USA
Ph: 417-673-4631 or 800-641-2008 Fax: 417-673-5001
www.detecto.com

0033-M265-01 Rev B
10/12

Technical Support: Ph: 866-254-8261 Email: tech@cardet.com