



Technology and Versatility United

THE SYSTEM 5000™

THE SYSTEM 5000™

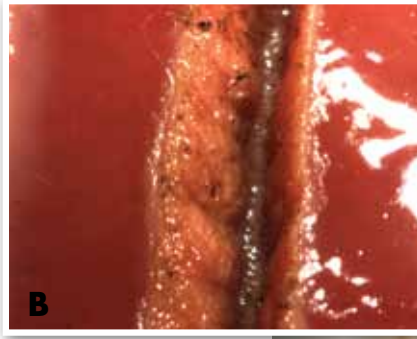
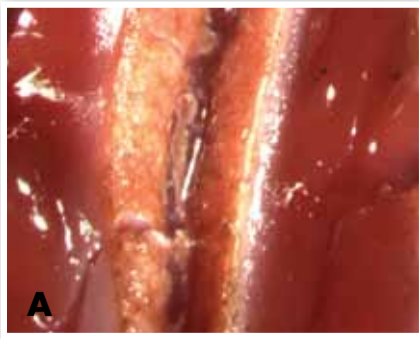
Technology and Versatility United

The System 5000™ Electrosurgery Unit (ESU) unites technology with versatility providing the opportunity to fine tune the electrosurgical generator to specific procedure and surgeon preferences. Unique modes on the System 5000™ include the Fluids Mode, for an additional boost of energy in procedures taking place in a fluid environment, and Lap Mode, which limits open circuit voltages to below 2700 volts in all modes and reduces the potential risk of inadvertent burns from capacitive coupling.

Dynamic Response Technology

The System 5000™ generator features proprietary Dynamic Response Technology. This technology delivers optimal clinical effects in all operational modes through the continuous synchronization of current and voltage. Advanced Digital Signal Processing architecture enables the system to sample current and voltage over 450,000 times per second and adjust the output accordingly to deliver consistent tissue effect.

- » **Programmable Memory Settings** – Recalls up to nine user pre-programmed power/mode settings
- » **Remote Power Control** – Allows the surgeon to make power adjustments from within the surgical field using any hand-controlled electrosurgical pencil



Comparison of Pure Cut at 50 watts on bovine liver. A. ConMed's System 5000 ESU, B. Competitor's ESU. Less charring occurs with the System 5000.

Versatility

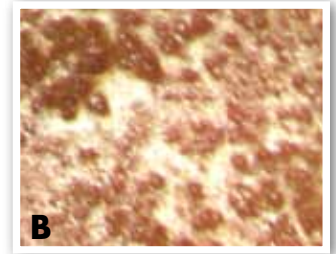
No other generator allows the surgeon to customize the output characteristics as precisely as the System 5000. The System 5000 offers advanced, easy-to-use, specialty modes including:

- » **General Mode** – Provides full power performance for open surgical procedures
- » **Fluids Mode** – Provides immediate energy delivery for procedures performed in a fluid medium
- » **Laparoscopic Mode** – Provides optimal safety by limiting output voltage through microprocessor-controlled circuitry and minimizes the potential harmful effects of capacitive coupling, insulation breakdown and unintended burns
- » **Pulse Cut Mode** – Provides precise energy bursts for critical dissections
- » **Multiple Bipolar Modes** – Micro bipolar for fine and precise coagulation. Macro bipolar for more energy intensive bipolar applications

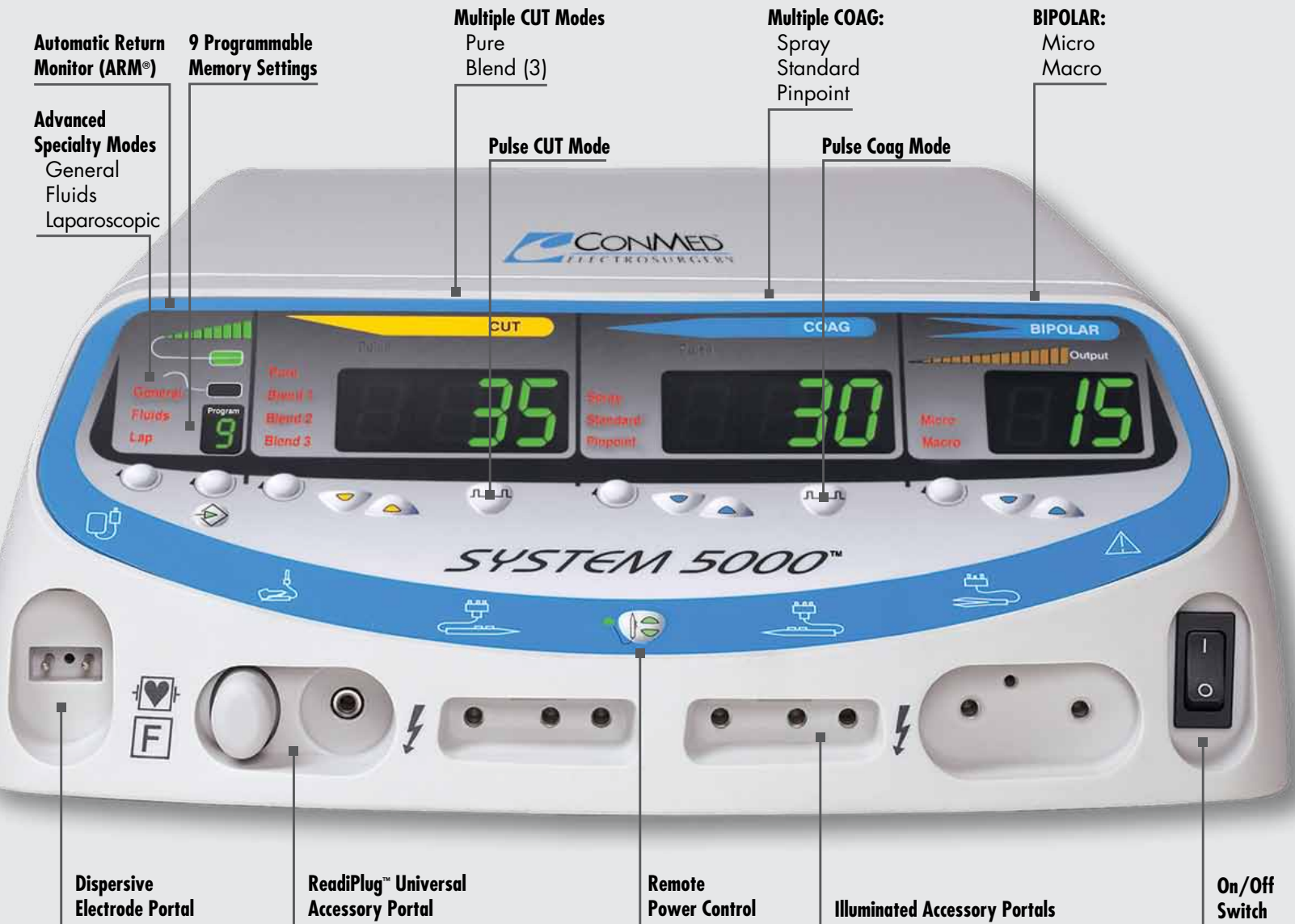


Unique Pulse Coag Mode

Pulse Coag provides pulsing bursts of coagulation energy for precise hemostasis in standard or spray modes. Pulse Coag imparts less tissue carbonization than standard coag at equivalent power settings. The electro-surgical energy is pulsed on and off every 2.5 milliseconds, providing higher peak power with an effective lower average power.



Comparison of Standard Coag (A) and Standard Pulse Coag (B) at 50 watts on bovine liver using the System 5000™.



Product Specifications

Mode	Watts	Max Peak Voltage	Crest Factor (Typical)	Frequency (KHz)
Monopolar				
Pure Cut	300	800	1.4-1.7	391
Blend 1 Cut	200	860	1.5-1.9	391
Blend 2 Cut	200	1100	1.8-2.4	391
Blend 3 Cut	200	1480	2.4-2.9	391
Special Features – Pulse Cut				
Pinpoint Coag	120	2120	3.7-4.6	391
Standard Coag	120	3140	5.6-6.6	562
Spray Coag	80	6350	7.1-9.7	562
Special Features – Pulse Coag				
Bipolar				
Micro Bipolar	50	170	1.5-1.9	391
Macro Bipolar	90	610	1.6-2.0	391
Special Features – Audible/Visual Output Meter				

Output Control System	Dynamic Response
Set-Up and Power Setting Memory	9 Memory Locations
Warranty	2 Yrs Standard 7 Yrs Extended
Contact Quality Monitoring System (CQM)	Improved ARM
CQM Range/Trip Point	10-150Ω / 30%
Cooling System	Convection/Fan
Power Display Accuracy	10% or 3W @ Rated Load
Technology	Isolated RF Output
Remote Power Control with Standard Electrosurgical Pencil	
Continuous Resistance Display	
Self Diagnosis	

- | | | |
|--|-------------------------------------|-------------------------------|
| »General Mode | »Remote Power Control | »Sloped Portals |
| »Fluids Mode | »Bipolar Output Meter | »4 Independent Output Portals |
| »Laparoscopic Mode | »Auto Sensing Pad Type | »Channeled Accessory Portals |
| »Pulse Cut | »Illuminated Portals | »Mobile Pedestal |
| »Pulse Coag | »Integrated Smoke Evacuation System | |
| »ReadiPlug™ Universal Accessory Portal | | |

Weight	21.5 lbs (9.75 kg)
Dimensions	H: 5.5" (9.75 cm) W: 13.5" (35 cm) D: 21.5" (54.6 cm)



Please contact your local CONMED Territory Manager for information on our family of generators and accredited training programs.

Technical Specifications subject to change without notice.

Ordering Information

60-8005-001	System 5000™ ESU, 120V
60-8005-002	System 5000™ ESU, 100V – 240V (Symbols Front Panel)
60-8005-003	System 5000™ ESU, 100V – 240V
60-8005-SYS	Includes a System 5000™ – 120V ESU, Mobile Pedestal, Upper Storage Basket, Lower Storage Basket, Monopolar Footswitch, Bipolar Footswitch (English Front Panel)
60-8015-SYS	Includes a System 5000™ – 100V to 240V ESU, Mobile Pedestal, Upper Storage Basket, Lower Storage Basket, Monopolar Footswitch, Bipolar Footswitch (Symbols Front Panel)
60-8018-SYS	Includes a System 5000™ – 100V to 240V ESU, Mobile Pedestal, Upper Storage Basket, Lower Storage Basket, Monopolar Footswitch, Bipolar Footswitch (English Front Panel)
60-8005-SYS-VAC	Includes a 120V System 5000™ ESU, Mobile Pedestal, Upper Storage Basket, Lower Storage Basket, Saddlebag Lower Basket, Monopolar Footswitch, Bipolar Footswitch, AER DEFENSE® Smoke Evacuator and Vacuum Control Assembly (English Front Panel)
60-8030-001	Stacking Adapter
60-8040-001	Mobile Pedestal including Upper and Lower Storage Baskets
60-6700-001	Monopolar Footswitch
60-5103-001	Bipolar Footswitch
60-8080-120	AER DEFENSE® Smoke Evacuator – 100/120V (includes AC Power Cord, 4' ESU Activation Cable, and Operator's Manual – Filters sold separately)
60-8080-230	AER DEFENSE® Smoke Evacuator – 220/240V (includes 4' ESU Activation Cable – Filters sold separately)
60-8084-001	AER DEFENSE® FilterOne™ ULPA (2/case)
60-8056-001	Smoke Evacuator Vacuum Control Assembly
60-8041-001	Saddlebag Lower Basket

SYSTEM 5000™ | Technology and Versatility United

CONMED CORPORATION PRODUCT AREAS:

ARTHROSCOPY • ELECTROSURGERY • ENDOSCOPY • ENDOSURGERY • GASTROENTEROLOGY • INTEGRATED SYSTEMS • PATIENT CARE • POWERED INSTRUMENTS • PULMONOLOGY



525 French Road
Utica, NY 13502
(315) 797-8375
Customer Service: 1-800-448-6506
FAX: 1-800-438-3051
International Sales: +1(315) 797-8375 • FAX: +1(315) 735-6235
email: info@mail.conmed.com
www.conmed.com

