



System 5000™ Electrosurgical Unit (ESU)

The standard in consistent energy delivery, the System 5000™ unites proprietary dynamic response technology with an array of specialty modes for desired clinical effect.



GOLDVAC™ SLIM
SMOKE EVACUATION PENCILS



AIRSEAL™ SYSTEM
INSUFFLATION MANAGEMENT



HELIXAR™ ESU
WITH ARGON BEAM COAGULATION

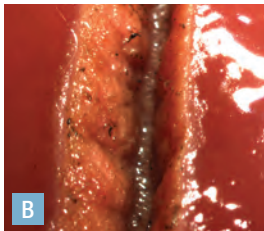
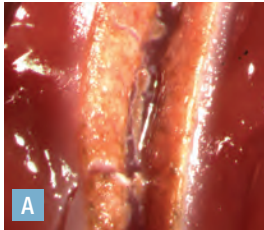


To learn more about these and other innovative products, call 800-448-6506 or visit CONMED.com

Clinical Benefits:

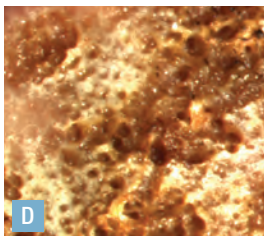
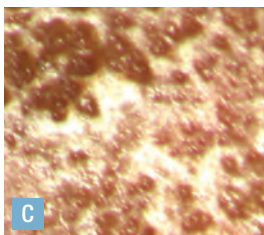
Reliability, Precision and Patient Safety

Since its introduction, the System 5000™ Electrosurgical Unit (ESU) has become synonymous with safety, performance, precision and reliability. Trusted around the world, the versatility of the System 5000 meets a variety of procedure-specific energy output needs including General, Laparoscopic and Robotic surgery.



Comparison of pure cut at 50 watts on bovine liver.

- A. CONMED's System 5000 ESU
- B. Increased charring occurs with competitive ESU



- C. Standard pulse coag at 50 watts on bovine liver using the System 5000™
- D. Standard coag at 50 watts

Controlled Energy for the Desired Clinical Effect to Tissue

Proprietary Dynamic Response Technology samples the current and voltage 450,000 times per second which enables it to respond to tissue impedance changes in less than 10 milliseconds. This ensures the precise voltage needed is safely delivered to each tissue type.

Reduced Risk of Coupling and Inadvertent Burns Helps Improve Patient Safety

The System 5000's Lap mode provides a unique safety feature that significantly reduces the risk of coupling and inadvertent burns during laparoscopic and robotic surgery by limiting voltage in all monopolar modalities to below 2,700 volts.

Unique Pulse Coag Mode Helps Minimize Blood Loss

With pulsing coagulation energy on and off every 2.5 milliseconds, precise hemostasis with less tissue carbonization than standard coag at equivalent power settings, is achieved.

Validated for Use With da Vinci Surgical System

Custom energy activation cable allows for seamless activation with the da Vinci S® & Si surgical robotic systems.

Additional Features

- Automatic Return Monitor (ARM®)
 - Advanced Specialty Modes (3 Modes)
 - 9 Programmable Memory Settings
- Illuminated Accessory Portals



Easy-to-use Specialty Modes for a wide range of clinical indications

Pre-programmed modes establish a precise baseline of safe energy output.

SYSTEM 5000™
ESU

General Mode

Delivers the full energy performance of our Dynamic Response Technology – immediately detecting, and automatically adjusting to, changes in tissue impedance. **Specialty:** [General Surgery, Urology, Gynecology](#)

Lap Mode

Limits output voltages below 2,700 volts in all of the System 5000's Monopolar modalities. Lap mode is designed to help reduce the risk of inadvertent burns from capacitive coupling from excess voltage. **Specialty:** [Robotic Surgery, All Minimally Invasive Procedures](#)

Fluids Mode

Effectively “kick starts” the initiation of surgical energy providing an immediate clinical effect in high load/low impedance conditions – typically used in procedures where there is fluid in the surgical site. **Specialty:** [Urology, Gynecology, Arthroscopic procedures](#)

Pulse Coag Mode

Provides pulsing bursts of coagulation energy for more control of hemostasis at the operative site, resulting in visibly less tissue carbonization than standard coagulation at equivalent power settings. **Specialty:** [General Surgery](#)

Pulse Cut Mode

Provides control of cutting depth for critical dissections necessary for endoscopic retrograde cholangiopancreatography (ERCP). **Specialty:** [Gastrointestinal \(GI\)](#)

Micro Bipolar Mode

Ideal for fine and precise coagulation. For procedures which require narrow margins using specialized bipolar forceps. **Specialty:** [Neurology, ENT](#)

Macro Bipolar Mode

Ideal for more energy intensive bipolar applications which require wider margins of coagulation. **Specialty:** [General Surgery, Endoscopy, Urology, Gynecology](#)



525 French Road, Utica, NY 13502



Ordering Information

Description	Catalog Number
System 5000™ ESU, 120V	60-8005-001
System 5000™ ESU, 100V – 240V (Symbols Front Panel)	60-8005-002
System 5000™ ESU, 100V – 240V	60-8005-003
Includes a System 5000 – 120V ESU, Mobile Pedestal, Upper Storage Basket, Lower Storage Basket, Monopolar Footswitch, Bipolar Footswitch (English Front Panel)	60-8005-SYS
Includes a System 5000 – 100V to 240V ESU, Mobile Pedestal, Upper Storage Basket, Lower Storage Basket, Monopolar Footswitch, Bipolar Footswitch (Symbols Front Panel)	60-8015-SYS
Includes a System 5000 – 100V to 240V ESU, Mobile Pedestal, Upper Storage Basket, Lower Storage Basket, Monopolar Footswitch, Bipolar Footswitch (English Front Panel)	60-8018-SYS
Includes a 120V System 5000 ESU, Mobile Pedestal, Upper Storage Basket, Lower Storage Basket, Saddlebag Lower Basket, Monopolar Footswitch, Bipolar Footswitch, AER DEFENSE® Smoke Evacuator and Vacuum Control Assembly (English Front Panel)	60-8005-SYS-VAC
Mobile Pedestal including Upper and Lower Storage Baskets	60-8040-001
Monopolar Footswitch	60-6700-001
Bipolar Footswitch	60-5103-001
Saddlebag Lower Basket	60-8041-001

National Stock Number	Part Number
6515-01-570-7407	60-8005-0011
6515-01-611-4620	60-8005-USM
6515-01-572-5448	60-8005-DOD

Customer Service: 1-800-448-6506
International Sales: 1-315-797-8375
Fax: 1-800-438-3051

CONMED.com
info@mail.CONMED.com