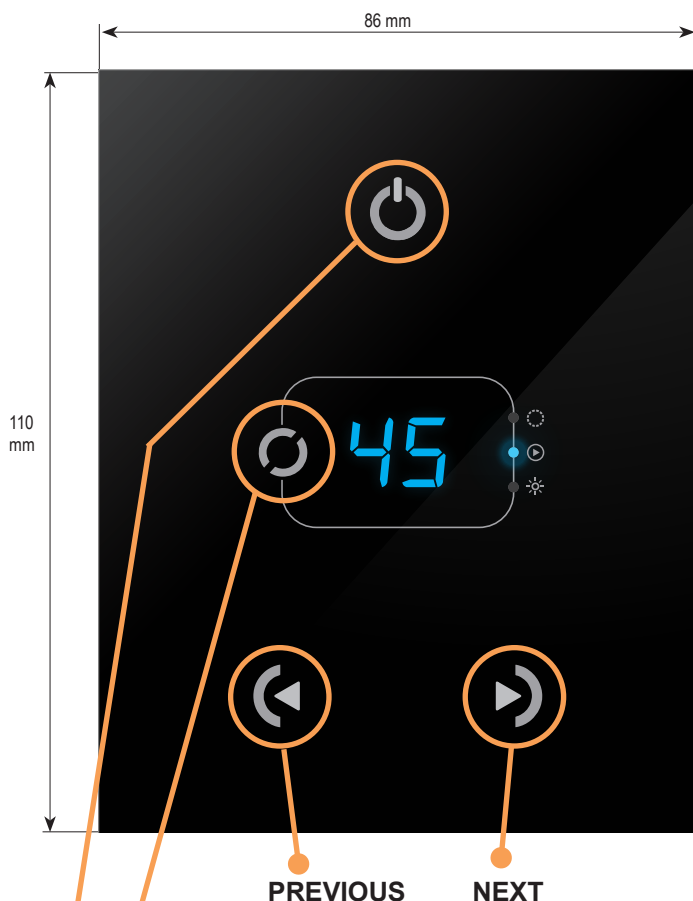
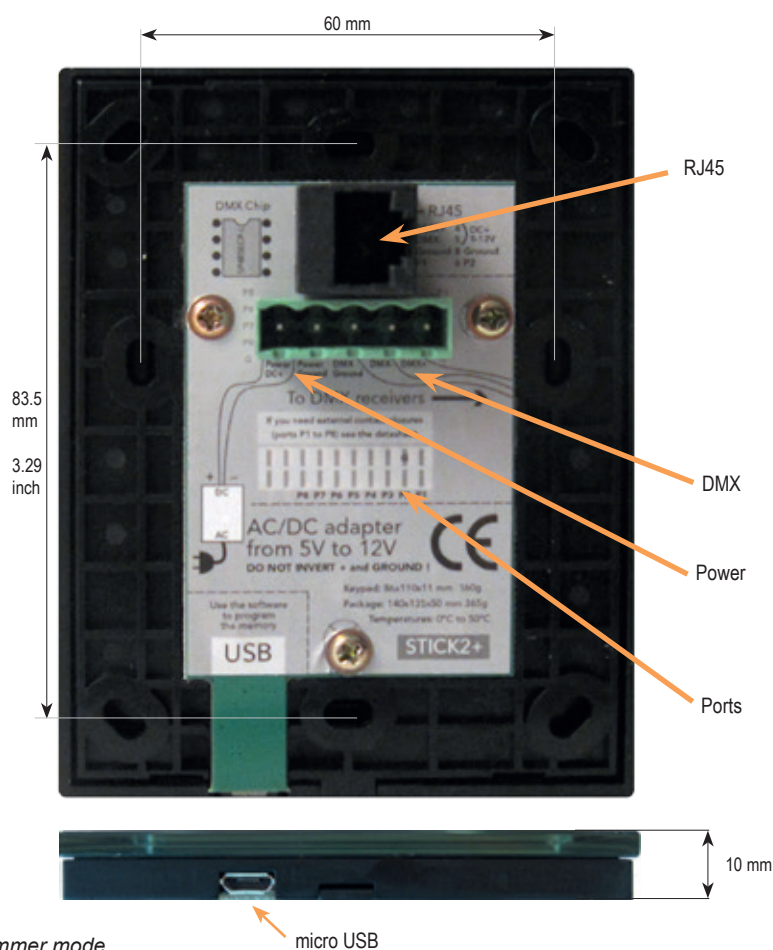


- DMX Stand Alone Controller (512 channels) with a glass face
- 4 touch sensitive buttons (on/off, mode, previous, next)
- Up to 99 dynamic or static scenes
- Live setting of the intensity and color of a scene
- Programmable through the included USB cable and control software
- Compatible with any DMX fixture or DMX LED driver
- Ready to use (pre-loaded with 8 scenes and 170 RGB fixtures)
- Latest ARM CPU technology
- Customized design for OEM, wall mountable
- 8 dry contact trigger ports on PCB and 2 on RJ45



CHANGE MODE : Switch between color, scene and dimmer mode

ON/OFF : Short touch - Easily switch on and off

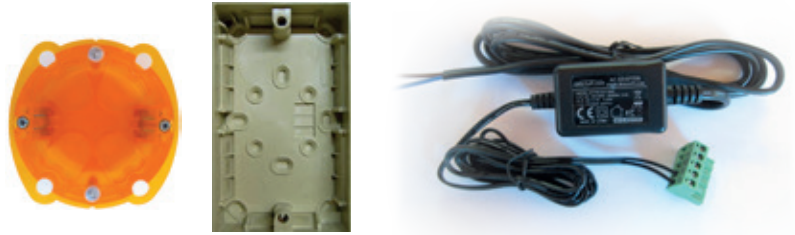


micro USB

SPECIFICATIONS		AVAILABLE MEMORY	
		Depending on the number of scenes used	
Package	Controller, cdrom, usb cable, connector block	CHANNELS	STEPS Using 8 scenes
OS Requirement	Mac OSx 10.6/10.7/10.8 - Windows XP/VISTA/SEVEN/8 32/64 bits and USB 2.0	4	9710
Software	ESA2 (PC & Mac)	8	6470
Versions	Black glass design, White glass design	16	3878
Connections	Power (2pins) DMX (3pins) Port (2 pins) Micro-usb	32	2150
Power	From 5V to 12V DC (AC/DC adapter in option). Max 5.5v with USB	64	1134
Certifications	EC, EMC, ROHS, ETL, UL (some are in process)	128	580
Keypad	86x110x10 mm 145g	256	290
Package	140x135x50 mm 365g	384	191
Use	Environnement IP20 Temperature 0°C to 50°C	512	141

EASY INSTALLATION

1. Mount an electrical box inside the wall



The S.T.I.C.K. controller can be installed in a standard electrical backbox. This box is usually 60mm high and wide, except in Japan and America where it is 83.5mm/3.29 inches high. You can insert the AC/DC adapter inside or outside the backbox.

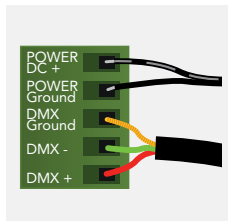
2. Connect the wires

Use the green connector block or RJ45 cable

POWER+DMX

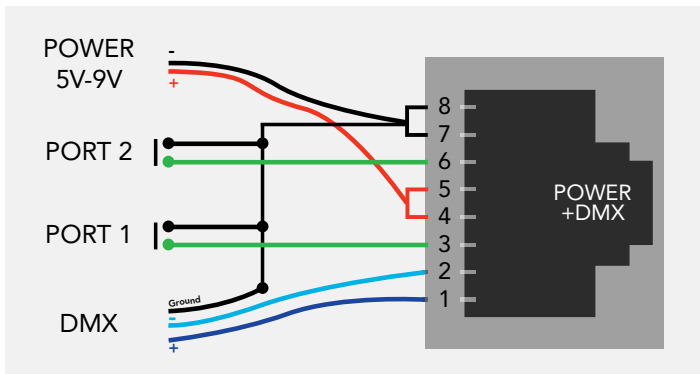
WITH THE CONNECTOR BLOCK

DMX: Connect the DMX cable to the lighting receivers (Leds, Dimmers, Fixtures..) (for XLR: 1=ground 2=dmx- 3=dmx+)
POWER: Connect the AC/DC adapter.
 Make sure not to invert the + and the ground.



POWER+DMX

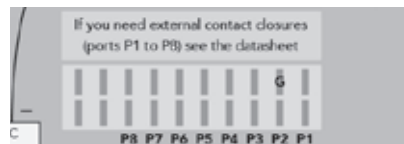
WITH THE RJ45 CABLE



OTHER CONNECTIONS

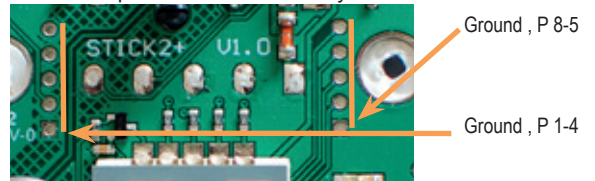
20 PIN CMS CONNECTOR FOR PORTS

- remove the sticker
- mount a 20 pin surface connector (CMS)



5 PIN CONNECTORS FOR PORTS

- remove the sticker
- solder the port connections directly to the PCB



DMX CHIP

- remove the sticker
- solder the DMX chip to the 8 pin connector on the right of the RJ45 socket. Be sure that the chip is facing downwards

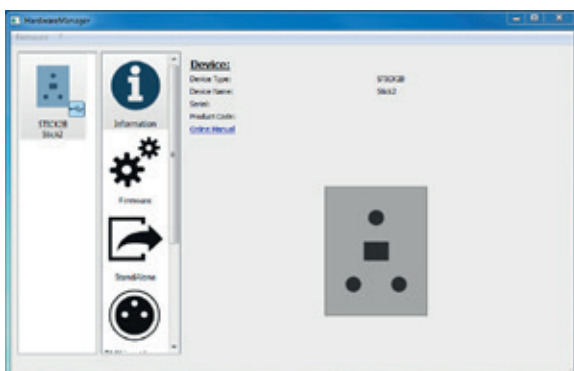


3. Mount the interface on the wall

First, plug the green connector block or RJ45 cable. Secondly, mount the back side of the interface on the wall with 2 or more screws. Then, close the unit by clipping the front panel onto the back plate. Wait 30 seconds for the touch sensitivity to adjust.

SOFTWARE

Hardware Manager to set parameters



ESA2 (PC & Mac) to make the lighting programs

