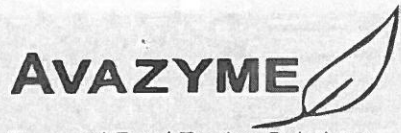


Green & Wild



Agriculture and Food Testing Solutions

CERTIFICATE OF ANALYSIS
CS0255_212048-004_C

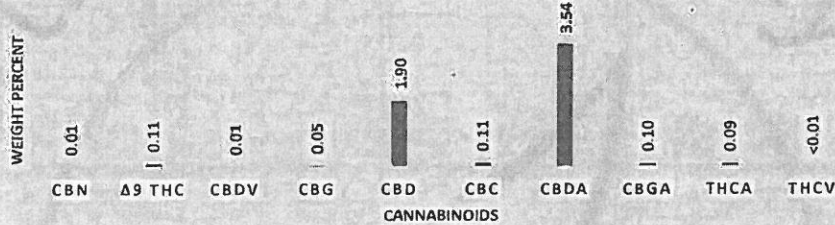
Cannabinoids

Client Sample ID: G&W Flavor 1-21-21 **MVRK Farms**
Sample Description: Dried Flower **7427 NC Hwy 58 S Suite B**
Receive sample: 22-Jan-21 **Stantonsburg, NC 27883**
Initiate analyses: 26-Jan-21

Analyst: Tonya Powell	Analyst Signature: <i>Tonya Powell</i>	Analyst Date: Jan 27, 2021
Reviewed by: Kara Pierce	Reviewer Signature: <i>Kara Pierce</i> <small>Kara Pierce (Jan 27, 2021 14:12 EST)</small>	Reviewer Date: Jan 27, 2021

Test Type: Total Cannabinoid Profile
Technical Procedure: TP A0033 & A0049

Results:



Cannabinoid	MoU (+/-)	% Dry Weight	Concentration (mg/g)
CBN	0.0004	0.01	0.11
Δ9 THC	0.0044	0.11	1.11
CBDV	0.0004	0.01	0.11
CBG	0.0018	0.05	0.45
CBD	0.076	1.90	18.96
CBC	0.0044	0.11	1.10
CBDA	0.142	3.54	35.44
CBGA	0.0039	0.10	0.97
THCA	0.0036	0.09	0.91
THCV	NA	<0.01	<0.10
* total THC		0.19	1.91
* total CBD		5.00	50.04
* total CBG		0.13	1.30
total		5.92	59.16
		ratio: Total CBD/THC	26.2



* total THC is calculated by Δ9 THC + 0.877xTHCA *total CBD is calculated by CBD + 0.877xCBDA

*total CBG is calculated by CBG + 0.878xCBGA

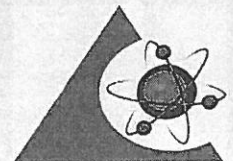
Avazyme, Inc is ISO/IEC 17025:2017 accredited by PJLA (accreditation # 101161) for Microbiological and Chemical Testing

MoU "measurement of uncertainty"

Concentration of cannabinoids were determined by Shimadzu LC2030 Plus with an Avazyme intra lab validated method utilizing certified reference standards for each chemical analyzed.

The result applies only to the sample listed on this certificate. Avazyme cannot guarantee that this sample is representative of the product/lot as a whole. Avazyme warrants that this study was performed in accordance with appropriate laboratory research practices and protocols for the sample submitted.

Avazyme is not responsible for Sponsor's use of the information or concepts generated as part of the study, and will not be liable for any loss or damage resulting from such use.



PJLA
Testing
 ISO/IEC 17025:2017
 Accreditation # 101161