

Floor boxes for tiles/marble

IP 44 floor boxes for tiles/marble



6 896 56 + 0 896 04



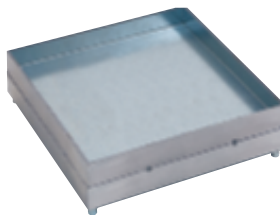
6 896 51 + 0 896 04



6 896 56 equipped with Arteor mechanisms



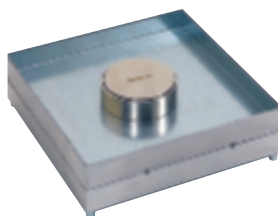
6 896 51 equipped with Arteor mechanisms



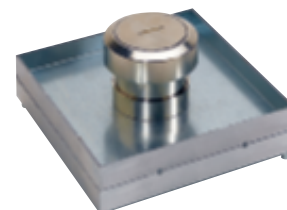
6 896 22



0 896 87



6 896 23



6 896 23 + 0 896 87

Technical characteristics [see e-catalogue](#)

Conforms to IEC 60670-23 and to BS EN 50 085-2.2
Compatible with screed floor system

Pack	Cat.Nos	Lid and trim for tiles/marble
1	6 896 56	To be installed in backbox Cat.No 0 896 04 for screed floor system To be equipped with support plates for Arteor or Mosaic Programme mechanisms Single cable outlet stainless steel lid and trim Edge trim for tile 8 to 15 mm thickness
1	6 896 55	Single cable outlet powder coated lid and trim Edge trim for tile 8 to 15 mm thickness Grey RAL 7031
1	6 896 51	Double cable outlet stainless steel lid and trim Edge trim for tile 8 to 15 mm thickness
1	6 896 52	Double cable outlet stainless steel lid and trim Edge trim for tile 15 to 22 mm thickness
1	0 896 04	Specific backbox for lids and trims for tiles/marble For installation of floor boxes Cat.Nos 6 896 22/23/51/52/55/56 for screed floor system

Technical characteristics [see e-catalogue](#)

Conforms to IEC 60670-23 and to BS EN 50 085-2.2
Compatible with screed floor system

Pack	Cat.Nos	IP 44 lid and trim for tiles/marble
1	6 896 22	To be installed in backbox Cat.No 0 896 04 for screed floor system Plain cover Edge trim for tile 8 to 24 mm thickness Can be used as access trap for junction, or equipped with support plates for Arteor or Mosaic Programme mechanisms Accepts up to 3 flat support plates Cat.No 6 896 58/73/74/77 or 1 kit of vertical supports Cat.No 6 896 57 No cable exit
1	6 896 23	With central cable exit Edge trim for tile 8 to 24 mm thickness To be equipped with support plates for Arteor or Mosaic Programme mechanisms Accepts up to 3 flat support plates Cat.No 6 896 58/73/74/77 or 1 kit of vertical supports Cat.No 6 896 57 Can be equipped with cable exit accessory Cat.No 0 896 87
1	0 896 87	Cable exit accessory For IP 44 or IP 66 floor boxes with central cable exit Cat.Nos 6 896 23 and 0 896 86 (p. 808)