

Fiber Optic Patchcords and Pigtails

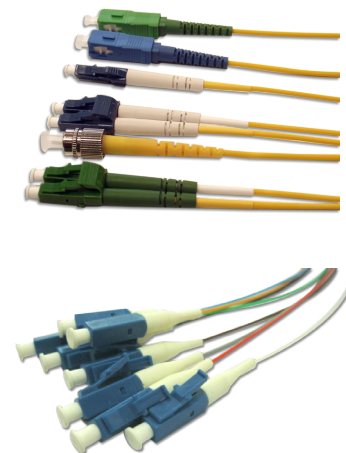
Introduction

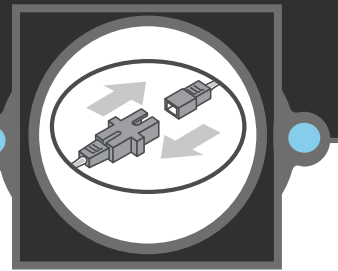
Opterna offers high performance patchcords and pigtails for use in all types of fiber optic networks. The Opterna patchcords & pigtails are manufactured using state-of-the-art controlled manufacturing processes to operate over a wide range of wavelengths, ranging from 850nm - 1300nm for Multimode and 1310nm - 1550nm for Singlemode fiber. Opterna patchcords and pigtails are terminated with high quality connectors, which provide low insertion loss and high return loss. Each patchcord or pigtail is individually tested and supplied with test certificates. The unique serial number provides traceability of every single product.

Features

➔ Patchcords and Pigtails

- Available in singlemode and multimode fiber types
- Available with all fiber optic connector types
- High quality ferrules and housings
- Low insertion loss and high return loss
- Individual test results and unique trace number provided with every product
- Mating Durability: 1000 cycles; <0.2 dB change
- Temperature range: -40 °C to +70°C
- RoHS compliant
- IEC, EIA/TIA and GR-326-CORE compliant





Fiber Optic Patchcords and Pigtails

Applications:

- Datacenter and Datacom
- FTTX deployments
- Pre-terminated assembly interconnection
- CATV, WAN, LAN and Telecom networks
- Testing and measurement equipment

Size & Dimensions:



Fig. 1: Simplex patchcord schematic



Fig. 2: Duplex patchcord schematic

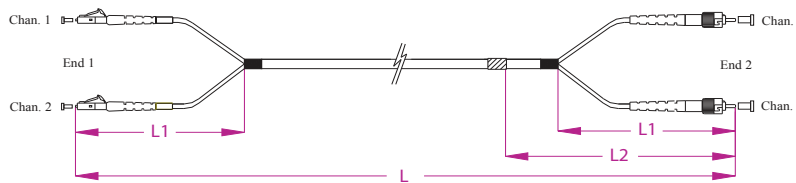
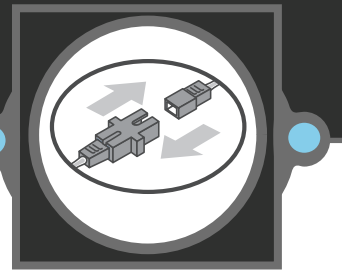


Fig. 3: Flat Duplex Patchcord Schematic



Fig. 4: Pigtail schematic

Length of assembly (L)	L -0/+100mm (for L<0.5m)
	L -0/+150mm (for 0.5m>L<5m)
	L -0/+200mm (for L>5m)
Split length (L ₁) - only for duplex	150 ± 25mm
Traceability label distance (L ₂)	200 ± 25mm (from one end)



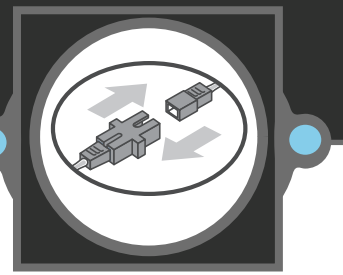
Fiber Optic Patchcords and Pigtaills

General Specification:

Parameter	Specification
Fiber Types	Multimode: OM1, OM2, OM3, OM4
	Singlemode: G652D, G657A1, G657A2, G657B2, G657B3, G655, G656
Cable type	Simplex: 2.8, 2.0, 1.8, 1.6, 1.2, 0.9, 0.6, 0.250mm
	Duplex: 2.8, 2.0, 1.8mm
	Flat duplex: 2.8mm
Cable Colours	Blue, Yellow, White, Orange, Aqua, Heather Violet
Connector Types	SC, LC, MU, FC, ST, MTRJ, ESCON, E-2000, SMA, FDDI
Endface Finish	PC, UPC, APC

Optical performance specification:

Parameter	Connector Type	Value	Typical
Insertion loss (dB)	Multimode SC, LC, MU, FC, ST, E-2000, ESCON, FDDI	≤ 0.30	≤ 0.20
	Multimode MTRJ & SMA	≤ 0.75	≤ 0.50
	Singlemode SC, LC, MU, FC, ST, ESCON, FDDI	≤ 0.30	≤ 0.20
	E2000	≤ 0.25	≤ 0.12
	MTRJ	≤ 0.50	≤ 0.30
Return Loss (dB)	All types Singlemode UPC endface finish type	≥ 50db	≥ 55db
	All types Singlemode APC endface finish type	≥ 60db	≥ 65db



Fiber Optic Patchcords and Pigtails

Ordering Info:

CA																			
Connector Type End 1		Connector Finish End 1		Cable Diameter		Fiber Type		Cable Type		Cable Material		Connector Type End 2		Connector Finish End 2		Cable Length		Cable Colour	
ST	ST connector	P	PC	12	1.2mm	OM1	62.5/125 MM	SX	Simplex	L	LSZH	ST	ST connector	P	PC	005	0.5 meter	BL	Blue
SC	SC connector	U	UPC	16	1.6mm	OM2	50/125 MM	DX	Duplex	V	PVC	SC	SC connector	U	UPC	015	1.5 meter	YL	Yellow
SD	SC duplex	A	APC	18	1.8mm	OM3	50/125 MM Laser Optimized	FD	Flat Duplex	R	RISER	SD	SC duplex	A	APC	150	15 meter	WH	White
FC	FC connector			20	2.0mm	OM4	50/125 MM Laser Optimized	TB	Tight Buffered	P	PLENUM	FC	FC connector		Blank for pigtail			OR	Orange
LC	LC connector			28	2.8mm	OS2	9/125 SM G.652.D	ES	Easy strip			LC	LC connector					AQ	Aqua
LD	LC duplex			02	250µm	7A1	G.657.A1 SM Bend Insensitive	LT	Loose tube			LD	LC duplex					HV	Heather Violet
MU	MU connector			06	600µm	7A2	G.657.A2 SM Bend Insensitive					MU	MU connector						
MD	MU duplex			09	900µm	7B2	G.657.B2 SM Bend Insensitive					MD	MU duplex						
E2	E-2000 connector					7B3	G.657.B3 SM Bend Insensitive					E2	E-2000 connector						
MT	MTRJ connector					655	9/125 SM G.655					MT	MTRJ connector						
FD	FDDI connector					656	9/125 SM G.656					FD	FDDI connector						
ES	ESCON connector											ES	ESCON connector						
SM	SMA connector											SM	SMA connector						
SS	Shuttered SC connector												Blank for pigtail						

Copyright 2014, Opterna International Corp. All rights reserved. The information contained herein is subject to change without notice. The Opterna name and logo are registered trademarks of Opterna Technology Limited.