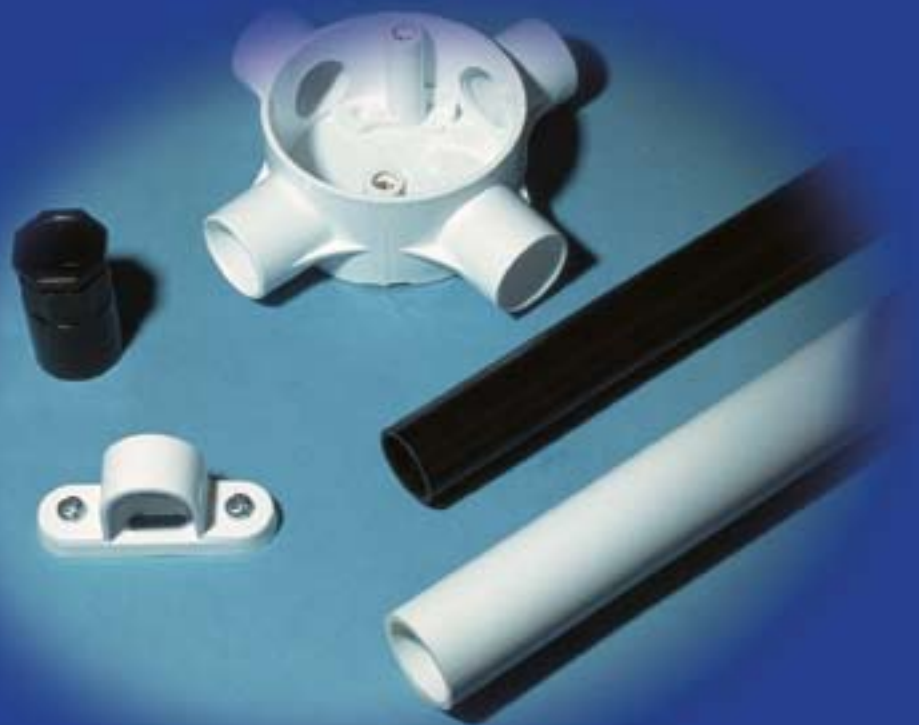


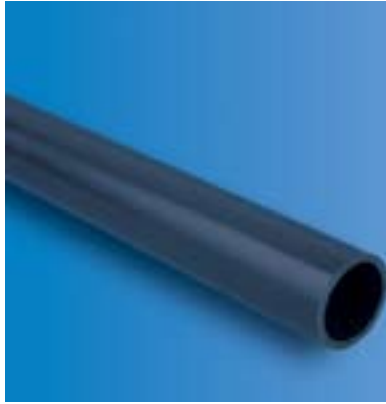
CONDUIT SYSTEMS





Conduit System

DECODUCT Conduits are manufactured from super high impact uPVC compound suitable to withstand harsh environments. Conduits can be bent with the use of a bending spring.



HEAVY GRADE ROUND CONDUIT-1250N COMPRESSION FORCE

Item code	Nominal Size (O.D.) mm	Minimum Inside Diameter mm	Standard packs		Bulk packs
			Pcs	Mtrs	Pcs
DCV 1	16	12.4	50	145	-
DCV 2	20	16.0	20	58	5000
DCV 3	25	20.7	20	58	3200
DCV 4	32	26.5	10	29	1800
DCV 5	38	32.5	10	29	1300
DCV 6	50	43.0	10	29	720



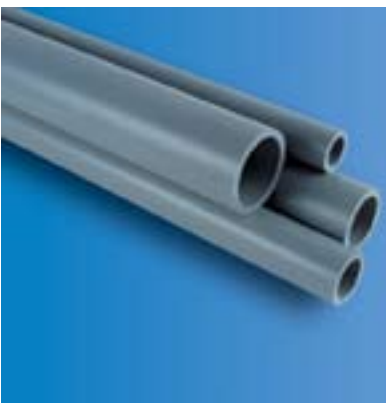
MEDIUM GRADE ROUND CONDUIT-750N COMPRESSION FORCE

Item code	Nominal Size (O.D.) mm	Minimum Inside Diameter mm	Standard packs		Bulk packs
			Pcs	Mtrs	Pcs
DCH 1	16	12.8	50	145	-
DCH 2	20	16.5	20	58	5000
DCH 3	25	20.9	20	58	3200
DCH 4	32	27.3	10	29	1800
DCH 5	38	33.1	10	29	1300
DCH 6	50	44.4	10	29	720



LIGHT GRADE ROUND CONDUIT-320N COMPRESSION FORCE

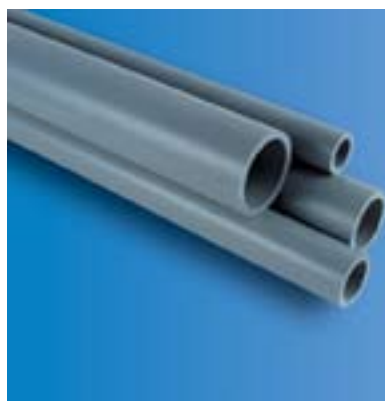
Item code	Nominal Size (O.D.) mm	Minimum Inside Diameter mm	Standard packs		Bulk packs
			Pcs	Mtrs	Pcs
DCL 1	16	13.4	50	145	-
DCL 2	20	17.2	20	58	5000
DCL 3	25	21.7	20	58	3200
DCL 4	32	28.5	10	29	1800
DCL 5	38	34.5	10	29	1300
DCL 6	50	45.6	10	29	720



US SCHEDULE 40 CONDUIT

Item code	Trade / Metric Sizes Inch/mm	Dimensions (mm) Maximum Outer Diameter	Schedule - 40 Minimum Wall Thickness	Standard Packs	
				Pieces	Metres
DCS4 - 1	1/2" / 16 mm	21.54	2.77	20	60
DCS4 - 2	3/4" / 21 mm	26.92	2.87	10	30
DCS4 - 3	1" / 27 mm	33.66	3.38	10	30
DCS4 - 4	1 1/4" / 35 mm	42.47	3.56	5	15
DCS4 - 5	1 1/2" / 41 mm	48.56	3.68	5	15
DCS4 - 6	2" / 53 mm	60.63	3.91	1	3
DCS4 - 7	3" / 78 mm	89.28	5.49	1	3
DCS4 - 8	4" / 103 mm	115.57	6.02	1	3
DCS4 - 9	6" / 155 mm	169.54	7.11	1	3

• Standard Length of 3 metres in grey colour. Other colours and lengths can be produced upon request.



US SCHEDULE 80 CONDUIT

Item code	Trade / Metric Sizes Inch/mm	Dimensions (mm) Maximum Outer Diameter	Schedule - 80 Minimum Wall Thickness	Standard Packs	
				Pieces	Metres
DCS4 - 1	1/2" / 16 mm	21.54	3.73	20	60
DCS4 - 2	3/4" / 21 mm	26.92	3.91	10	30
DCS4 - 3	1" / 27 mm	33.66	4.55	10	30
DCS4 - 4	1 1/4" / 35 mm	42.47	4.85	5	15
DCS4 - 5	1 1/2" / 41 mm	48.56	5.08	5	15
DCS4 - 6	2" / 53 mm	60.63	5.54	1	3
DCS4 - 7	3" / 78 mm	89.28	7.62	1	3
DCS4 - 8	4" / 103 mm	115.57	8.56	1	3
DCS4 - 9	6" / 155 mm	169.54	10.97	1	3

• Standard Length of 3 metres in grey colour. Other colours and lengths can be produced upon request.



OVAL CONDUIT

Item code	Size (mm)	Standard packs		Bulk packs
		Pcs	Mtrs	
DOV 1	16 x 0.8	50	150	-
DOV 2	22 x 0.8	50	150	-
DOV 3	28 x 1.0	50	150	-



PLIABLE CONDUIT-CORRUGATED

Item code	Nominal Size (O.D.) (mm)	Minimum Inside Diameter (mm)	Standard packs Mtrs/Roll	Bulk packs
HEAVY GAUGE				8 Rolls
DPH 2	20	15.4	50	8 Rolls
DPH 3	25	20.4	50	8 Rolls
LIGHT GAUGE				8 Rolls
DPL 2	20	15.6	50	8 Rolls
DPL 3	25	20.6	50	8 Rolls

• Available in black, white or grey • Standard Length 50 metres



RECTANGULAR CHANNELS

Item code	Size (mm)	Standard packs		Bulk packs
		Pcs	Mtrs	
DQC 1	13 x 8	50	100	-
DQC 2	25 x 8	50	100	-
DQC 3	38 x 9.5	50	100	-

• Available in black, white or grey
• Standard Length 2 metres

Options

- Decoduct rigid conduit is available in black or white. Please state colour preference
- Decoduct rigid conduit is supplied in standard lengths of 2.9 metres. Alternative lengths can be supplied to order
- Rigid conduits can be offered with belled ends for socket joining. Please specify when this option is required.



Round Conduit Fittings

DECODUCT Conduit fittings are manufactured from super high impact uPVC compound suitable to withstand harsh environments



STRAIGHT COUPLERS

Item code	Size (mm)	Standard packs	Bulk packs
DNC 2	20	100	2600
DNC 3	25	50	1300
DNC 4	32	50	800
DNC 5	38	25	400
DNC 6	50	20	240



EXPANSION COUPLERS

Item code	Size (mm)	Standard packs	Bulk packs
DEC 2	20	50	800
DEC 3	25	25	625
DEC 4	32	10	260
DEC 5	38	10	250
DEC 6	50	10	120



NORMAL BENDS-SLIP TYPE

Item code	Size (mm)	Standard packs	Bulk packs
DLB 2	20	20	320
DLB 3	25	10	160
DLB 4	32	5	60
DLB 5	38	2	60
DLB 6	50	2	28



NORMAL BENDS-HEAVY GAUGE

Item code	Size (mm)	Standard packs	Bulk packs
DHB 2	20	20	320
DHB 3	25	10	160
DHB 4	32	5	60
DHB 5	38	2	60
DHB 6	50	2	30

Options : Available in black or white

Round Conduit Fittings



INSPECTION ELBOWS

Item code	Size (mm)	Standard packs	Bulk packs
DIE 2	20	25	650
DIE 3	25	25	400



INSPECTION BENDS

Item code	Size (mm)	Standard packs	Bulk packs
DIB 2	20	25	400
DIB 3	25	20	320



INSPECTION TEES

Item code	Size (mm)	Standard packs	Bulk packs
DIT 2	20	20	520
DIT 3	25	20	320



STRAP SADDLES

Item code	Size (mm)	Standard packs	Bulk packs
DSS 2	20	100	4000
DSS 3	25	100	4000
DSS 4	32	100	2600
DSS 5	38	50	2000
DSS 6	50	50	1300

Options : Available in black or white



Round Conduit Fittings



SPACER BAR SADDLES

Item code	Size (mm)	Standard packs	Bulk packs
DSB 2	20	100	2600
DSB 3	25	50	2000
DSB 4	32	50	1300
DSB 5	38	25	1000
DSB 6	50	25	650



ROUND SPRING CLIPS

Item code	Size (mm)	Standard packs	Bulk packs
DRC2	20	200	5200
DRC3	25	100	4000



FEMALE ADAPTORS

Item code	Size (mm)	Standard packs	Bulk packs
DFA2	20	100	2600
DFA3	25	50	1300
DFA4	32	25	650
DFA5	38	20	520
DFA6	50	20	320



MALE ADAPTORS

Item code	Size (mm)	Standard packs	Bulk packs
DMA2	20	100	2600
DMA3	25	50	1300

Options : Available in black or white

Round Conduit Fittings



MALE THREADED BUSH

Item code	Size (mm)	Standard packs	Bulk packs
DMB2	20	200	8000
DMB3	25	100	4000
DMB4	32	100	2600
DMB5	38	50	2000
DMB6	50	25	1000



FEMALE THREADED LOCKRINGS

Item code	Size (mm)	Standard packs	Bulk packs
DFB 2	20	200	8000
DFB 3	25	200	8000



REDUCERS

Item code	Size (mm)	Standard packs	Bulk packs
DRD 2	25/20	100	2600



PLIABLE CONDUIT ADAPTORS

Item code	Size (mm)	Standard packs	Bulk packs
DPA2	20	50	2000
DPA3	25	100	1200

Options : Available in black or white



Round Conduit Circular Junction Boxes

Fixing centres 50.8mm. Earth terminals facility. M4 brass inserts. Load suspension 3kgs at 60°C. Knock outs to accept steel clips for the support of heavy loads.



NO SPOUT BOX

Item code	Size (mm)	Standard packs	Bulk packs
DNS	Plain	25	400



LOOP IN BOXES

Item code	Size (mm)	Standard packs	Bulk packs
DLI 2	20 K.O.(4)	25	400
DLI 3	25 K.O.(2)	25	400



TERMINAL - ONE WAY

Item code	Size (mm)	Standard packs	Bulk packs
DJO 2	20	25	400
DJO 3	25	25	400



THROUGH - TWO WAY

Item code	Size (mm)	Standard packs	Bulk packs
DJT 2	20	25	400
DJT 3	25	25	300

Options : Available in black or white

Round Conduit Circular Junction Boxes



ANGLE - TWO WAY

Item code	Size (mm)	Standard packs	Bulk packs
DJA 2	20	20	320
DJA 3	25	20	320



TEE - THREE WAY

Item code	Size (mm)	Standard packs	Bulk packs
DJE 2	20	20	320
DJE 3	25	20	240



INTERSECTION - FOUR WAY

Item code	Size (mm)	Standard packs	Bulk packs
DJF 2	20	20	240
DJF 3	25	20	240



U - TWO WAY


Item code	Size (mm)	Standard packs	Bulk packs
DJU 2	20	20	320
DJU 3	25	20	320

Options : Available in black or white




Round Conduit Circular Junction Boxes

Fixing centres 50.8mm. Earth terminals facility. M4 brass inserts. Load suspension 3kgs at a of 60°c. Knock outs to accept steel clips for the support of heavy loads.




Y - THREE WAY

Item code	Size (mm)	Standard packs	Bulk packs
DJY 2	20	20	320
DJY 3	25	20	240




H - FOUR WAY

Item code	Size (mm)	Standard packs	Bulk packs
DJH 2	20	20	240
DJH 3	25	20	240



CIRCULAR EXTENSION RINGS

Item code	Size (mm) height	Standard packs	Bulk packs
DER 2	15	50	800
DER 3	20	50	800



CIRCULAR LIDS

Item code	Size (mm)	Standard packs	Bulk packs
DLC 1	66 dia	100	2600

Options : Available in black or white



CIRCULAR JUNCTION BOXES FITTED WITH RUBBER GASKET, LID & SCREWS

Circular junction boxes can be supplied assembled with rubber gasket, lid and screws. Eg. item codes for 20mm 2 way through circular junction box DJT 2 should be suffixed with/RG as DJT 2/RG



RUBBER GASKET

Item code	Size (mm)	Standard packs	Bulk packs
DRG-B	66 dia	100	2600



BENDING SPRINGS

Heavy Gauge Item code	Conduit Size (mm)	Light Gauge Item code	Bulk packs
DBH 2	20	DBL 2	-
DBH 3	25	DBL 3	-

Heavy gauge springs are suitable for heavy & medium gauge round conduits while light gauge springs are suitable for light gauge round conduits



PVC CEMENT

Item code	Standard packs	Bulk packs
DSG 2	24	-

Solvent Cement 250ml cans with applicator. Suitable for use with DECODUCT uPVC conduit, trunking & fittings



Round Conduit Circular Junction Boxes with Back Outlet

Fixing centres 50.8mm. Earth terminals facility. M4 brass inserts. Load suspension 3kgs at 60°C. Knock outs to accept steel clips for the support of heavy loads.



TERMINAL ONE WAY & BACK OUTLET

Item code	Size (mm)	Standard packs	Bulk packs
DJO 2/BO	20	20	320
DJO 3/BO	25	20	240



THROUGH TWO WAY & BACK OUTLET

Item code	Size (mm)	Standard packs	Bulk packs
DJT 2/BO	20	20	240
DJT 3/BO	25	20	240



ANGLE TWO WAY & BACK OUTLET

Item code	Size (mm)	Standard packs	Bulk packs
DJA 2/BO	20	20	240
DJA 3/BO	25	20	240



TEE THREE WAY & BACK OUTLET

Item code	Size (mm)	Standard packs	Bulk packs
DJE 2/BO	20	20	240
DJE 3/BO	25	10	160

Options : Available in black or white

Round Conduit Circular Junction Boxes with Back Outlet



INTERSECTION FOUR WAY & BACK OUTLET

Item code	Size (mm)	Standard packs	Bulk packs
DJF 2/BO	20	10	160
DJF 3/BO	25	10	160



U-TWO WAY & BACK OUTLET

Item code	Size (mm)	Standard packs	Bulk packs
DJU 2/BO	20	20	240
DJU 3/BO	25	20	240



Y-THREE WAY & BACK OUTLET

Item code	Size (mm)	Standard packs	Bulk packs
DJY 2/BO	20	20	240
DJY 3/BO	25	10	160



H-FOUR WAY & BACK OUTLET

Item code	Size (mm)	Standard packs	Bulk packs
DJH 2/BO	20	10	160
DJH 3/BO	25	10	160



Round Conduit Accessory Mounting Boxes

Fitted with M3.5 brass fixing threads and earth terminal facility. Fixing centres 60.3mm for single gang and 120.6mm for twin gang boxes



SINGLE GANG SURFACE MOUNTING ACCESSORY BOX

Item code	DSO2	DSO2/K	Bulk packs
Type	Plain	with K.O	240
Depth	32mm	32mm	
Size	87 x 87mm	87 x 87mm	
Std Packs	20	20	



TWIN GANG SURFACE MOUNTING ACCESSORY BOX

Item code	DST2	DST2/K	Bulk packs
Type	Plain	with K.O	120
Depth	32mm	32mm	
Size	87 x 147mm	87 x 147mm	
Std Packs	10	10	



SINGLE GANG FLUSH MOUNTING ACCESSORY BOX

Item code	DFO2/AL	Bulk packs
Type	with K.O. and one adjustable lug	240
Depth	35mm	
Size	74 x 74mm	
Entries	2 x 20 mm on each of the four sides	
Std Packs	20	



TWIN GANG FLUSH MOUNTING ACCESSORY BOX

Item code	DFT2/AL	Bulk packs
Type	with K.O. and one adjustable lug	120
Depth	35mm	
Size	74 x 134.3mm	
Entries	4 x 20 mm on long sides 2 x 20 mm on short sides	
Std Packs	10	

Options : Available in black or white

Round Conduit Accessory Mounting Boxes



HIGH IMPACT SINGLE GANG INDUSTRIAL SURFACE MOUNTING ACCESSORY BOX

Item code	DSI1	Bulk packs
Type	with K.O	-
Depth	45mm	
Size	87 x 87mm	
Entries	5 x 20mm along with plugs	
Std Packs	10	
Material	Polycarbonate	

• Available in Grey but other colours can be produced upon request



SINGLE GANG FLUSH MOUNTING DRY LINING ACCESSORY BOX

Item code	DLO3	Bulk packs
Type	2 x 25mm C.O.	-
Depth	34mm	
Size	74 x 74mm	
Std Packs	20	



TWIN GANG FLUSH MOUNTING DRY LINING ACCESSORY BOX

Item code	DLT3	Bulk packs
Type	2 x 25mm C.O.	-
Depth	34mm	
Size	74 x 134mm	
Std Packs	10	



SQUARE LIDS/RECTANGULAR LIDS (Overlapping)

Item code	Size (mm)	Standard packs	Bulk packs
DSL 1	85 x 85mm	100	4000
DSL 2	85 x 146mm	50	1300

Options : Available in black or white



Metal Mounting Boxes

DECODUCT flush mounting metal (GI) boxes are manufactured from the highest quality galvanised steel and can be fitted with brass or steel terminals. Available with adjustable lug. These boxes are manufactured in compliance with BS4662:1970.



SINGLE GANG BOX

Item code	Description
EDF 181	With steel terminal
EDF 182	With brass washer terminal
EDF 183	Without terminal
EDF 184	With brass pillar terminal

Sheet Thickness: 0.9mm
 Dimensions : 72 x 72 x 16 mm
 One adjustable and one fixed lug with fixing centres: 60.3 mm
 Conduit entries: 4 nos. 25 x 9mm knockouts
 3 nos. 15 x 9mm knockouts



SINGLE GANG BOX

Item code	Description
EDF 171	With steel terminal
EDF 172	With brass washer terminal
EDF 173	Without terminal
EDF 174	With brass pillar terminal

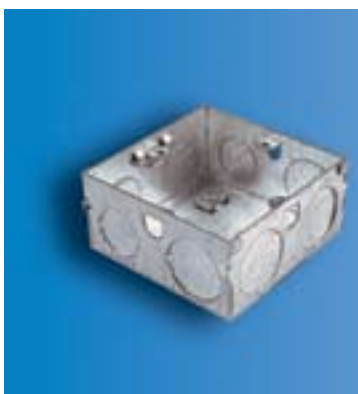
Sheet Thickness: 0.9mm
 Dimensions : 72 x 72 x 25 mm
 Two adjustable and two fixed lugs with fixing centres: 60.3 mm
 Conduit entries: 11 x 20 mm knockouts



SINGLE GANG BOX

Item code	Description
EDF 151	With steel terminal
EDF 152	With brass washer terminal
EDF 153	Without terminal
EDF 142	With brass pillar terminal

Sheet Thickness: 0.9 mm
 Dimensions : 72 x 72 x 35 mm
 Four fixed lugs with fixing centres: 60.3 mm
 Conduit entries: 7 x 20 mm and 4 x 25 mm knockouts



SINGLE GANG BOX

Item code	Description
EDF 161	With steel terminal
EDF 162	With brass washer terminal
EDF 163	Without terminal
EDF 164	With brass pillar terminal

Sheet Thickness: 0.9mm
 Dimensions : 72 x 72 x 35 mm
 One adjustable and three fixed lugs with fixing centres: 60.3 mm
 Conduit entries: 7 x 20 mm and 4 x 25 mm knockouts



SINGLE GANG BOX

Item code	Description
EDF 165	With steel terminal
EDF 166	With brass washer terminal
EDF 167	Without terminal
EDF 168	With brass pillar terminal

Sheet Thickness: 1.1mm

Dimensions : 72 x 72 x 35 mm

Two adjustable and two fixed lugs with fixing centres: 60.3 mm

Conduit entries: 7 x 20 mm and 4 x 25mm knockouts



SINGLE GANG BOX

Item code	Description
EDF 471	With steel terminal
EDF 472	With brass washer terminal
EDF 473	Without terminal
EDF 474	With brass pillar terminal

Sheet Thickness: 0.9mm

Dimensions : 72 x 72 x 47 mm

Two fixed and two adjustable lugs with fixing centres: 60.3 mm

Conduit entries: 7 x 20 mm and 4 x 25 mm knockouts



TWIN GANG BOX

Item code	Description
EDF 271	With steel terminal
EDF 272	With brass washer terminal
EDF 273	Without terminal
EDF 274	With brass pillar terminal

Sheet Thickness: 0.9 mm

Dimensions : 132 x 72 x 25 mm

One adjustable and one fixed lug with fixing centres: 120.6 mm

Conduit entries: 16 x 20mm knockouts



TWIN GANG BOX

Item code	Description
EDF 251	With steel terminal
EDF 252	With brass washer terminal
EDF 253	Without terminal
EDF 242	With brass pillar terminal

Sheet Thickness: 0.9 mm

Dimensions : 132 x 72 x 35 mm

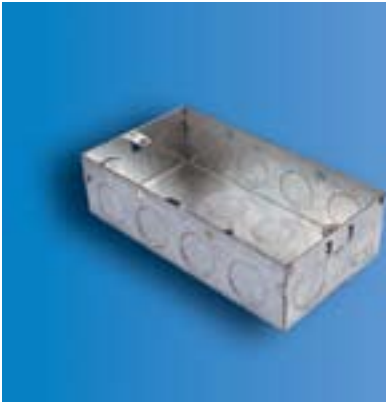
One fixed and one adjustable lug with fixing centres: 120.6 mm

Conduit entries: 10 x 20 mm and 4 x 25 mm knockouts



Metal Mounting Boxes

DECODUCT flush mounting metal (GI) boxes are manufactured from the highest quality galvanised steel and can be fitted with brass or steel terminals. Available with adjustable lug. These boxes are manufactured in compliance with BS4662:1970.



TWIN GANG BOX

Item code	Description
EDF 281	With steel terminal
EDF 282	With brass washer terminal
EDF 283	Without terminal
EDF 284	With brass pillar terminal

Sheet Thickness: 0.9 mm
 Dimensions : 132 x 72 x 35 mm
 One adjustable and one fixed lug with fixing centres: 120.6 mm
 Conduit entries: 16 x 20mm knockouts



TWIN GANG BOX

Item code	Description
EDF 285	With steel terminal
EDF 286	With brass washer terminal
EDF 287	Without terminal
EDF 288	With brass pillar terminal

Sheet Thickness: 1.1 mm
 Dimensions : 132 x 72 x 35 mm
 One adjustable and one fixed lug with fixing centres: 120.6 mm
 Conduit entries: 8 x 20mm and 8 x 25mm knockouts



TWIN GANG BOX

Item code	Description
EDF 475	With steel terminal
EDF 476	With brass washer terminal
EDF 477	Without terminal
EDF 478	With brass pillar terminal

Sheet Thickness: 0.9 mm
 Dimensions : 132 x 72 x 47 mm
 One adjustable and one fixed lug with fixing centres: 120.6 mm
 Conduit entries: 8 x 20mm and 8 x 25mm knockouts



DUAL BOX

Item code	Description
EDF 258	With steel terminal
EDF 259	With brass washer terminal
EDF 260	Without terminal
EDF 243	With brass pillar terminal

Sheet Thickness: 0.9 mm **Depth : 35mm**
 Eight lugs-all fixed
 Conduit entries per one gang box : 7 x 20 mm and 4 x 25 mm knockouts

ADAPTABLE BOX

Item code	Size (mm)	Nominal Depth (mm)		Standard Packs (pcs)
	Nominal	Base	Lid	
DAB 2 B	75 x 75 x 56	50	6	80
DAB 4 B	100 x 100 x 75	60	15	30
DAB 5 B	150 x 110 x 75	60	15	20
DAB 6 B	150 x 150 x 75	60	15	14
DAB 7 B	190 x 140 x 75	60	15	10
DAB 8 B	225 x 225 x 75	60	15	6
DAB 9 B	240 x 190 x 105	90	15	6

Ingress Protection Rating: IP 56 (with rubber gasket)

Note: Above item codes are for BLACK colour

For white colour replace last digit 'B' with 'W'

For Grey colour replace last digit 'B' with 'G'

