



SINCE 1909
JAPAN

Window Mount Ventilating Fan



NEW

15WHC ●
20WHC ●



Rain Proof & Wind Resistance



Easy Installation in Few Minutes



Applicable for 3mm ~ 25mm Glass Plate



No Trespass of Rain Water & Wind

With ventilating fan installed, indoor air quality (IAQ) can be improved. However, you may worry rain water and wind ingress indoors during rainy or windy day through the ventilating fan or its installation opening.

From now on, you can enjoy good air quality with ease. The new KDK window mount ventilating fan features rain proof and wind resistance, providing worry-free solutions for indoor air quality.

Rain Proof & Wind Resistance

Hood structure for prevention of rain water ingress

Newly design of shutter can keep out entry of rain water effectively



High static pressure blade can prevent ingress of rain & wind during operation



Bent End Structure of the shutter can block the backflow of outside wind

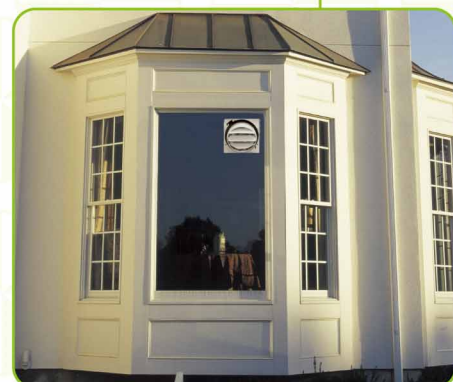
Modern Design



- The elegant design of louver can blend with most modern interior
- The blind-shutter design enhances the privacy of your living



- The simple design of rear part lets your house have a neat outlook

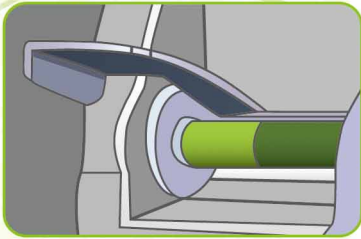


Completes Installation in Few Minutes With Simple Steps

In the past, before installing the ventilating fan, you need to apply silicon sealant on to the glass plate, that take 1 day to dry up. With the new KDK window mount ventilating fan, silicon sealant, even gasket, are not necessary.

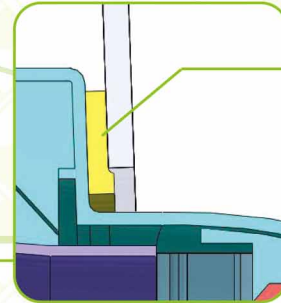
The newly designed mounting brackets enable quick installation in just few minutes. Also, with these brackets, the fan can be fixed on the glass plates with thickness from 3mm up to 25mm. It provides great convenience and efficiency for installation.

Easy Installation



Mounting Bracket

Unique design of mounting bracket can fix the fan on glass plate with simple process



Packing
No Gasket
No Silicon Seal

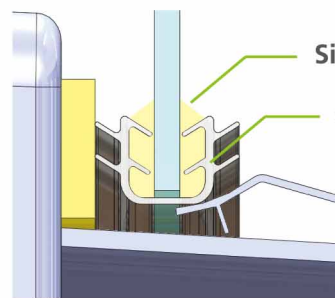
Attached packing tightly closes to the glass plate that gets rid of water leakage to indoor



15WHC

Orifice is not necessary to detach for installation. Simply fix the fan on glass plate by screws at front

Previous Setting Method

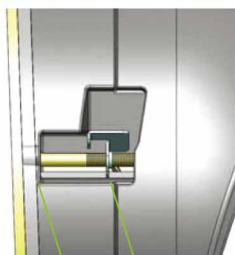


Silicon Seal
Gasket

Both gasket & silicon seal are not required

High Adaptability

New mounting design allows the fan to be fixed on glass plate of thickness from 3mm up to 25mm with ease



Applicable Glass Thickness
3mm ~ 25 mm

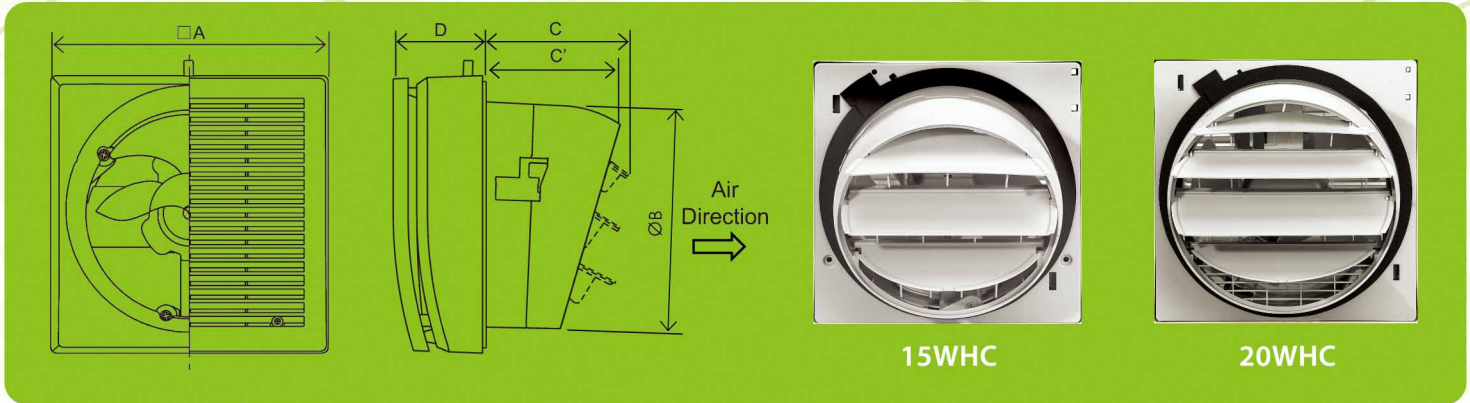
Double Glass

Often called insulated glass, this kind of glass is constructed of two panes of glass set apart to allow airspace in between. This airspace acts as a buffer which obstructs the transfer of heat from one side of the glass to the other.





Dimension



* The dimension have tolerance in actual assembly.

Unit: mm

	A	B	C	C'	D
15WHC	224	182	117	111	72
20WHC	288	243	120	117	74

Specification

	15WHC		20WHC	
	50 Hz	60 Hz	50 Hz	60 Hz
Air Volume [m ³ /h]	230	230	445	480
Noise [dB(A)]	43	44	42	45
Power Consumption [W]	13	13	20	22
Installation Hole [mm]	ø186 ~ 188		ø247 ~ 250	
Applicable Glass Thickness [mm]	3 ~ 25		3 ~ 25	
Weight [kg]	1.4		2.6	

*The value in specification table are representative characteristic value at 220V



KDK Company, Division of PES

Head Office: 4017, Takaki-cho, Kasugai, Aichi, Japan.
[Http://kdk.jp](http://kdk.jp)

- Specifications are subject to change without prior notice.
 - Actual colors may vary slightly from those shown.

CATALOG NO: K-VF007B1
 Printed in Hong Kong 04.12