



ACTIVE

CUP AA - K

SPORTS  
BRAS  
+ TIGHTS

2023

# FAVOURITE

Key products that we believe in and which have a huge amount of potential. We pay particular attention to these styles in our consumer communications.

Simple, convenient and easy to put on and take off due to the wide opening: „Easy On & Off“ design

Strap system developed exclusively for Anita: Ergonomically shaped, padded, very easy to adjust at the front and designed to be far from the neck

F



**dynamiX star** STYLE 5537.107 · Cup A–G

Seamless cup - highly functional piqué on the outside, hydrophilic terry cloth on the inside

Net insert at the front centre as an additional aeration zone

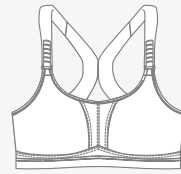
# AWARDS



Winner in the category „Best sports bra brand“



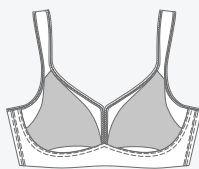
exteme control plus style 5567



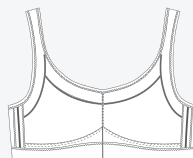
dynamix star style 5537



sport tights massage style 1695 / style 1696



air control DeltaPad style 5544



momentum style 5529

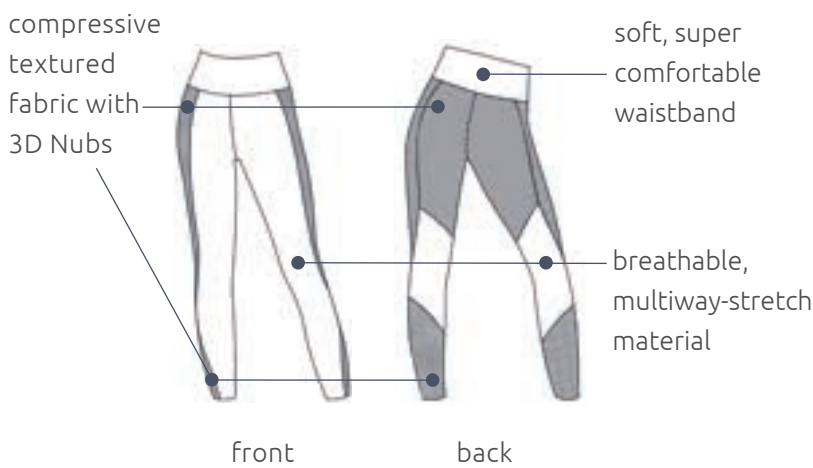




The Anita active PanAlp series is inspired by outdoor activities such as mountain sports, running, biking or hiking. Worked from functional material combinations, such as merino wool, breathable mesh and air-permeable structured goods, the sports bras shine in sports top style. The design of the PanAlp tops and tights is based on puristic understatement. Clean and minimalist on the outside, packed with carefully thought-out functions on the inside result in optimal wearing comfort.

## sport tights compression

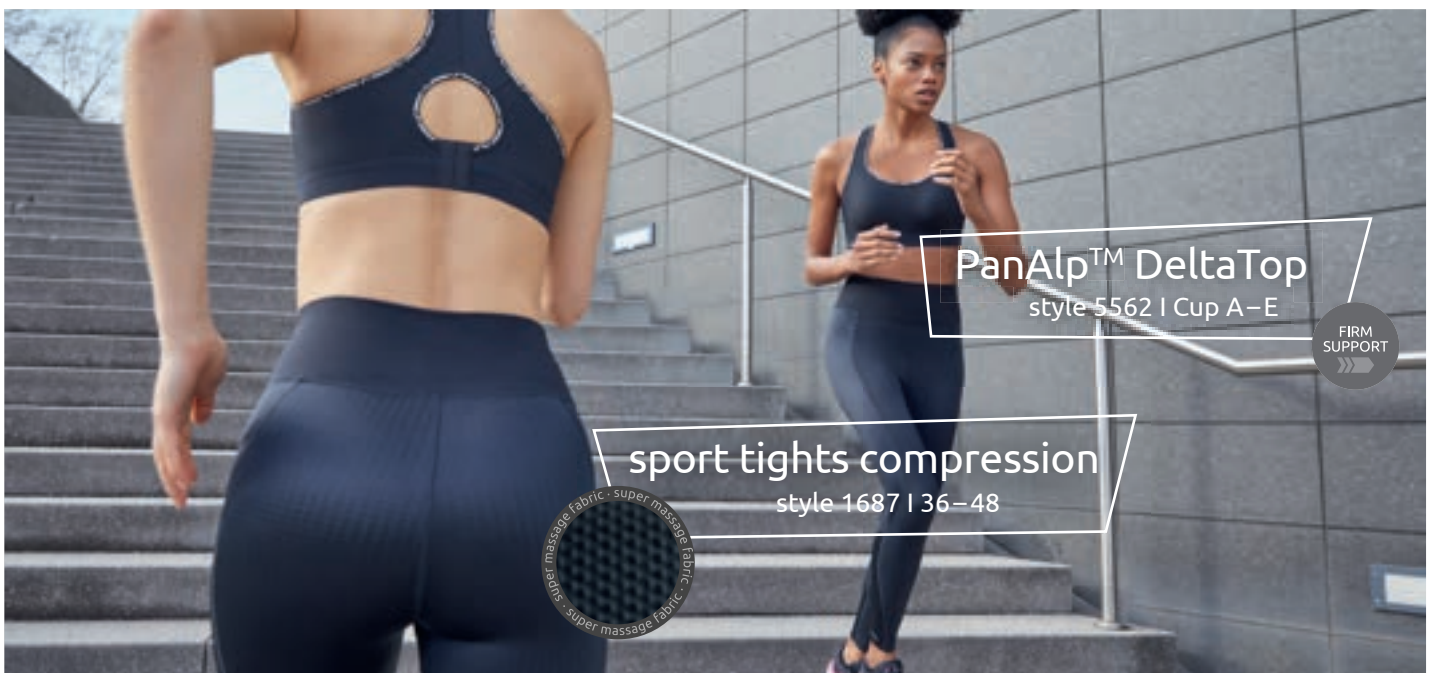
The first sport tights for our PanAlp range: New compression sport tights that combine different fabrics according to the individual needs of the body zones. Unique details specially developed for outdoor activities.



### ▶ sport tights compression

#### NEW ARTICLE

001 **black** · spring/summer 2023





ACTIVE

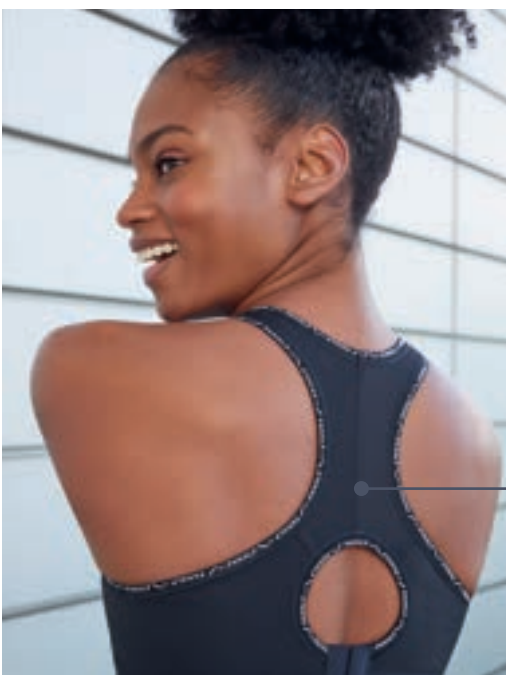


## PanAlp™ Delta Top

Our PanAlp range has been expanded to include a new sports bra with the tried-and-tested Delta Pad cup. Proven Anita quality for absolute comfort.

Patented  
DeltaPad cup inside

Breathable,  
multiway-stretch material



### ◀ PanAlp™ Delta Top

NEW ARTICLE

001 **black** · spring/summer 2023

Racerback for  
perfect movement



#### D PanAlp wool 5555:

- Außenware aus ultraleichtem Netz, kombiniert mit atmungsaktiver, weicher Merinowolle
- Innen komplett aus Merinowolle gearbeitet
- Klimaregulierung: Merinowolle kühlt im Sommer und wärmt im Winter
- Besonders weiches, luftdurchlässiges und haltgebendes Unterbrustband
- Atmungsaktiver, mit Powerfüll unterlegter Netzrücken

#### EN PanAlp wool 5555:

- Outer fabric made of ultra-light mesh combined with soft and breathable merino wool
- Fine merino wool on the inside
- Climate control: merino wool has a cooling effect in the summer and a warming effect in the winter
- Extremely soft, air-permeable and supportive underband
- Breathable mesh back lined with power tulle

#### F PanAlp wool 5555:

- Tissu extérieur en mesh ultraléger, combiné à une laine mérinos douce, et respirante
- Intérieur entièrement en laine mérinos
- Régulation de la température : la laine mérinos rafraîchit en été et réchauffe en hiver
- Basque sous-poitrine particulièrement douce, perméable à l'air et offrant un bon maintien
- Dos en mesh respirant et renforcé en power tulle

#### ES PanAlp wool 5555:

- Tejido exterior de malla ultraligera, combinada con lana de merino suave y transpirable
- Interior completamente de lana de merino
- Regula el clima cutáneo: la lana de merino refresca en verano y calienta en invierno
- Cinta especialmente suave y permeable al aire debajo del pecho que proporciona una gran sujeción
- Espalda de malla transpirable con tul de refuerzo

#### I PanAlp wool 5555:

- Esterno in rete ultra leggera, abbinato a lana merino morbida e traspirante
- All'interno lavorato completamente in lana merino
- Regolazione del clima: la lana merino rinfresca in estate e riscalda in inverno
- Fascia sottoseno molto morbida, traspirante e stabile
- Inserto in rete traspirante e rinforzato con powertulle sulla schiena

#### NL PanAlp wool 5555:

- Buitenstof van ultralichte mesh, gecombineerd met ademende en zachte merinowol
- Van binnen geheel gemaakt van merinowol
- Temperatuurregeling: merinowol is koel in de zomer en warm in de winter
- Bijzonder zachte, luchtdoorlatende en steungevende borstband
- Ademende, met powertulle gevoerde rug van mesh



#### D PanAlp air 5560:

- Ultra-leichtes Netz außen, innen atmungsaktive Strukturware — Kombination sorgt für optimalen Klimakomfort
- Doppellagige, nahtlos geformte Cups, Bruststütze zwischen den Stofflagen für noch mehr Support
- Flache Abschlussbänder und rundum verstärzte Bundkante für ein softes Tragegefühl

#### EN PanAlp air 5560:

- Ultra lightweight mesh material on the outside, breathable, structured fabric on the inside, a combination that guarantees optimal body climate and comfort
- Double-layer, seamless shaped cups, and breast support between the fabric layers for more overall support
- Flat edging and a tubed underband for that extra soft and comfortable feeling

#### F PanAlp air 5560:

- Mesh ultraléger à l'extérieur, matière texturée respirante à l'intérieur : cette combinaison offre une régulation de la température optimale
- Bonnets sans couture à double épaisseur, renfort de poitrine entre les différentes couches de tissu pour encore plus de maintien
- Bords plats et outlet retourné doux tout autour de la ceinture pour plus de confort.

#### ES PanAlp air 5560:

- Exterior de malla ultraligera, interior de tejido texturizado transpirable — la combinación asegura un clima cutáneo óptimo
- Copas de doble capa preformadas sin costuras, soporte para el pecho entre las capas de tejido para una sujeción aún mayor
- Terminaciones planas y remate bajo pecho cosido y vuelto para una gran comodidad y suavidad

#### I PanAlp air 5560:

- Rete ultra leggera all'esterno, all'interno tessuto strutturato traspirante — questa combinazione garantisce un clima ottimale sulla pelle
- Coppe preformate, senza cuciture e in doppio strato, sostegno tra gli strati di stoffa per un maggiore supporto
- Bordi piatti e orli ripiegati per una morbida vestibilità

#### NL PanAlp air 5560:

- Ultralichte mesh aan de buitenkant, ademend structuurmateriaal binnenin — een combinatie voor optimale temperatuurregeling
- Dubbellaagse, naadloos gevormde cups, borstondersteuning tussen de stofflagen voor nog meer support
- Platte boorden en tailleband met ingeslagen naad rondom voor een zacht draaggevoel



#### D PanAlp Delta Top 5562:

- Patentierte Delta-Pad Schale, besonders atmungsaktive Schaumschale
- Dreieckform hält die Brust perfekt und kaschiert zusätzlich
- Racerback für perfekte Bewegungsfreiheit
- Top aus atmungsaktiver Strukturware

#### EN PanAlp Delta Top 5562:

- Patented Delta-Pad cup, particularly breathable foam shell
- Triangle shape holds the breast perfectly and also conceals it
- Racerback for perfect movement
- Top made of breathable structured fabric

#### F PanAlp Delta Top 5562:

- Coque Delta Pad brevetée, coque en mousse particulièrement respirante
- La forme triangulaire maintient parfaitement la poitrine tout en la camouflant
- Dos nuageur pour une liberté de mouvement optimale
- Haut en matière texturée respirante

#### ES PanAlp Delta Top 5562:

- Cazoleta DeltaPad patentada de espuma especialmente transpirable
- La forma triangular proporciona una sujeción perfecta y oculta adicionalmente las imperfecciones
- Racerback para una libertad de movimiento perfecta
- Top de género texturado transpirable

#### I PanAlp Delta Top 5562:

- Coppa Delta Pad brevettata, coppa in schiuma particolarmente traspirante
- La forma a triangolo sostiene perfettamente il seno e ha anche un effetto coprente
- Reggiseno racerback per una perfetta libertà di movimento
- Top in tessuto strutturato traspirante

#### NL PanAlp Delta Top 5562:

- Gepatenteerde DeltaPad cup, bijzonder ademende schuimcup
- Triangelvorm houdt de buste perfect in vorm en is bovendien verhallend
- Racerback voor perfecte bewegingsvrijheid
- Top van ademend structuurmateriaal

# PANALP™ WOOL PERFECT FOR OUTDOOR ACTIVITIES

STYLE 5555 · A3



44% PA, 32% PES,  
14% WO, 10% EL  
lining: 82% WO, 12% PA,  
6% EL

Cup: A – C  
D/EUR: 70 – 95  
GB/US: 32 – 42  
France: 85 – 110  
Italia: 2 – 7

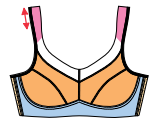
472

Cup: D – E  
D/EUR: 70 – 90  
GB/US: 32 – 40  
France: 85 – 105  
Italia: 2 – 6

472

Cup: F – G  
D/EUR: 70 – 85  
GB/US: 32 – 38  
France: 85 – 100  
Italia: 2 – 5

472



# PANALP™ AIR NEW STYLE

STYLE 5560 · A3



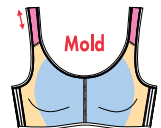
60% PA, 25% EL, 15% PES

Cup: A – D  
D/EUR: 70 – 95  
GB/US: 32 – 42  
France: 85 – 110  
Italia: 2 – 7

476

Cup: E – F  
D/EUR: 70 – 85  
GB/US: 32 – 38  
France: 85 – 100  
Italia: 2 – 5

476



# PANALP™ DELTA TOP NEW STYLE SPRING/SUMMER 2023

STYLE 5562 · A3



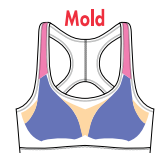
62% PA, 32% EL, 6% PES  
cup: 55% PU, 45% PES

Cup: A – D  
D/EUR: 70 – 90  
GB/US: 32 – 40  
France: 85 – 105  
Italia: 2 – 6

001

Cup: E  
D/EUR: 70 – 85  
GB/US: 32 – 38  
France: 85 – 100  
Italia: 2 – 5

001



A1 = basic · A2 = light support · A3 = firm support · A4 = maximum support



#### D air control 5544:

- Patentierte Delta-Pad Schale, besonders atmungsaktive Schaumschale
- Perfekter Halt der Brust durch Triangelform der Schaumschale
- Aussparungen im seitlichen und unteren Cupbereich zur perfekten Belüftung
- Besonders weiches, luftdurchlässiges und haltgebendes Unterbrustband

#### ES air control 5544:

- Cazoleta DeltaPad patentada de espuma especialmente transpirable
- Fijación perfecta del pecho gracias a la forma triangular de la cazoleta de espuma
- Para una perfecta transpiración la cazoleta está cosida solo en 3 puntos: laterales y superior
- Banda bajopecho especialmente suave, transpirable y de óptimo ajuste.

#### EN air control 5544:

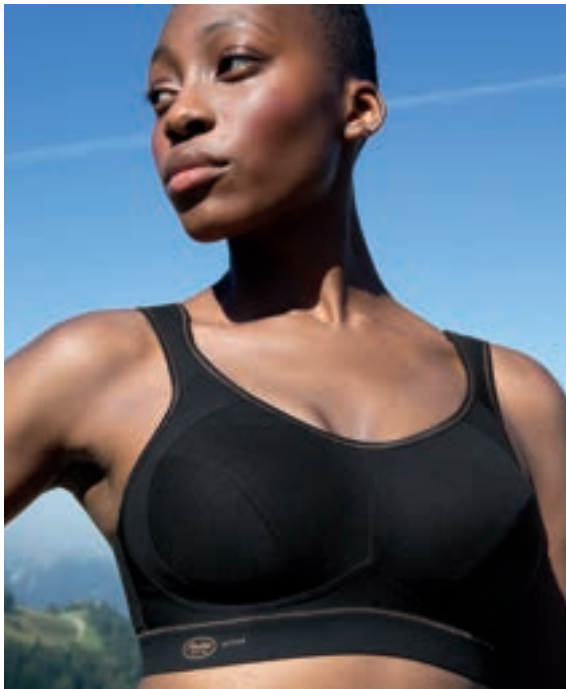
- Patented Delta-Pad cup, particularly breathable foam shell
- The bust is optimally supported thanks to the triangular shape of the foam cup
- Cut-out sections at the sides and bottom of the cup keep the skin perfectly cool
- Especially soft, breathable and supportive underband

#### F air control 5544:

- Coque Delta Pad brevetée, coque en mousse particulièrement respirante
- Maintien optimal de la poitrine grâce à la forme triangulaire des coques
- Échancrures sur la partie basse et les côtés des bonnets pour une aération irréprochable
- Basque sous-poitrine particulièrement douce qui assure évacuation de la transpiration et maintien

#### NL air control 5544:

- Gepatenteerde DeltaPad cup, bijzonder ademende schuimcup
- Perfecte steun van de borst door triangelvorm van de schuimschaal
- Uitsparingen aan de zij- en onderkant van de cup voor perfecte ventilatie
- Bijzonder zachte, luchtdoorlatende en steungevende ondercupband



#### D extreme control 5527:

- Außen hochfunktionelles Piqué
- Innen nahtlos hydrophiles Frottee
- Hochfunktionelle Piquéware, die Feuchtigkeit schnell absorbiert und aktiv vom Körper weg transportiert
- Dreigeteiltes Außencup mit seitlich stützender Sichel
- Ergonomisch geschnittene Komfortträger
- Atmungsaktiver Netzrücken

#### ES extreme control 5527:

- Piqué de máxima funcionalidad en el exterior
- Rizo hidrófilo sin costuras en el interior
- Material altamente funcional de piqué, por el cual la humedad es rápidamente absorbida y transportada fuera del cuerpo
- Copas exteriores divididas en tres partes con pretina lateral en forma de media luna
- Tirantes confort de corte ergonómico
- Red transpirable en la espalda

#### EN extreme control 5527:

- Outside high-function piqué fabric
- Inside seamless hydrophilic towelling
- High-function piqué fabric that quickly absorbs moisture and actively transports it away from the body
- Three-section outer cup with sickle-shaped support at side
- Ergonomically tailored comfort straps
- Breathable mesh back

#### F extreme control 5527:

- À l'extérieur : tissu piqué très fonctionnel
- À l'intérieur : tissu éponge hydrophile sans couture
- Tissu piqué Atmos très fonctionnel qui absorbe rapidement l'humidité du corps et l'évacue activement.
- Extérieur du bonnet en trois parties avec renfort latéral
- Bretelles confort à coupe ergonomique
- Filet au dos favorisant la respiration de la peau

#### NL extreme control 5527:

- Buitenzijde van hoogfunctioneel piqué
- Naadloze en hydrofiële frottee binnenzijde
- Hoogfunctioneel piqué materiaal, dat vochtigheid snel absorbeert en actief van het lichaam wegvoert
- Driedelige buitencup met zijwaartse steun
- Ergonomisch gesneden comfortschouderbanden
- Rugpand van ademend materiaal



#### D extreme control plus 5567:

- Belüftungszonen in der vorderen Mitte, der seitlichen Sichel und im Steg
- 5-fach geteiltes Außen- und Innencup, ohne Nähte auf der Haut
- funktionelle, gedoppelte Trägerkombination für stabilen Halt
- Luftiger Netzrücken, mit Powertüll verstärkt

#### ES extreme control plus 5567:

- Zonas de aireación en el centro del sujetador, en los laterales y entre las copas
- Copa exterior e interior dividida en 5, sin costuras en contacto con la piel
- Combinación de doble tirante funcional para una sujeción estable
- Espalda en red transpirable y con refuerzo en powertulle

#### EN extreme control plus 5567:

- Cooling zones at the centre front, in the structured side section and in the central panel
- Five-section outer and inner cup; no seams on the skin
- functional, double strap combination for stable support
- Airy mesh back strengthened with power tulle

#### F extreme control plus 5567:

- Zones d'aération sur l'avant entre les bonnets et le décolleté ainsi qu'au niveau des zones de renfort latérales, mais aussi tout autour de la structure des bonnets.
- Bonnet extérieur et intérieur divisés en 5 parties, sans couture en contact avec la peau
- Combinaison de bretelles doublées pour apporter plus de maintien et soulager les épaules
- Dos en mesh aéré, renforcé de tulle ferme

#### NL extreme control plus 5567:

- Ventilatiezones middenvoor, aan de zijkant en tussen de cups
- 5-voudig verdeelde buiten- en binnencup, zonder naden op de huid
- functionele, dubbele schouderbanden
- Luchtige achterkant van mesh, versterkt met powertulle



# AIR CONTROL DELTA PAD NEW COLOUR 115 LIPSTICK SPRING/SUMMER 2023

STYLE 5544 · A4



49% PA, 39% PES, 12% EL  
cup: 55% PU, 45% PES

Cup: A – E  
D/EUR: 70 – 95  
GB/US: 32 – 42  
France: 85 – 110  
Italia: 2 – 7

283

Cup: A – E  
D/EUR: 65 – 95  
GB/US: 30 – 42  
France: 80 – 110  
Italia: 1 – 7

474

Cup: AA  
D/EUR: 70 – 95  
GB/US: 32 – 42  
France: 85 – 110  
Italia: 2 – 7

474

Cup: AA – E  
D/EUR: 65 – 95  
GB/US: 30 – 42  
France: 80 – 110  
Italia: 1 – 7

107	107
115	474
595	

Cup: F  
D/EUR: 65 – 90  
GB/US: 30 – 40  
France: 80 – 105  
Italia: 1 – 6

107	107
115	474
595	



Cup: F  
D/EUR: 70 – 90  
GB/US: 32 – 40  
France: 85 – 105  
Italia: 2 – 6

283

Cup: G  
D/EUR: 65 – 85  
GB/US: 30 – 38  
France: 80 – 100  
Italia: 1 – 5

107	107
115	474
474	595

Cup: G  
D/EUR: 70 – 85  
GB/US: 32 – 38  
France: 85 – 100  
Italia: 2 – 5

283

Cup: H  
D/EUR: 65 – 80  
GB/US: 30 – 36  
France: 80 – 95  
Italia: 1 – 4

107	107
115	474
474	595

## EXTREME CONTROL

STYLE 5527 · A4



76% PES, 19% PA, 5% EL

Cup: B – E  
D/EUR: 65 – 105  
GB/US: 30 – 46  
France: 80 – 120  
Italia: 1 – 9

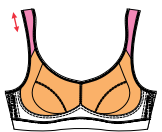
416	416
254	471
471	753

Cup: F – G  
D/EUR: 65 – 100  
GB/US: 30 – 44  
France: 80 – 115  
Italia: 1 – 8

416	416
254	471
471	753

Cup: H  
D/EUR: 65 – 95  
GB/US: 30 – 42  
France: 80 – 110  
Italia: 1 – 7

416	416
254	471
471	753



## EXTREME CONTROL+ ADDITIONAL SIZE SPRING/SUMMER 2023

STYLE 5567 · A4



51% PES, 44% PA, 5% EL

Cup: F – H  
D/EUR: 65 – 110  
GB/US: 30 – 48  
France: 80 – 125  
Italia: 1 – 10

445	445
107	

Cup: I  
D/EUR: 65 – 100  
GB/US: 30 – 44  
France: 80 – 115  
Italia: 1 – 8

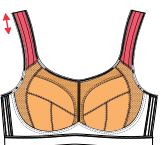
445	445
107	

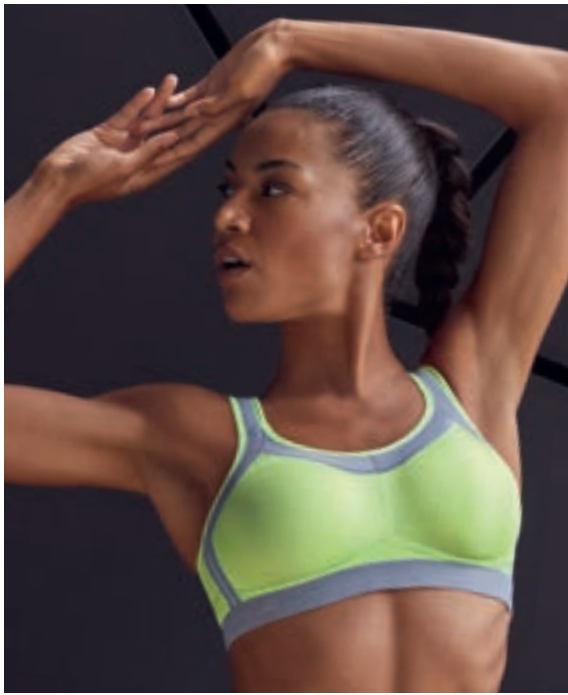
Cup: J  
D/EUR: 65 – 95  
GB/US: 30 – 42  
France: 80 – 110  
Italia: 1 – 7

445	445
107	

Cup: K  
D/EUR: 65 – 90  
GB/US: 30 – 40  
France: 80 – 105  
Italia: 1 – 6

445	445
107	





**D momentum 5529:**

- Außen hydrophobes Eyelet
- Innen hydrophiles Frottee
- Hochgeschlossene Blende für zusätzlichen Halt
- Nahtlos geformtes Cup
- Atmungsaktiver Netzrücken

**EN momentum 5529:**

- Outside features hydrophobic eyelet fabric
- Inner lining of hydrophilic towelling
- High-cut panel for extra support
- Seamless shaped cup
- Breathable net back

**F momentum 5529:**

- À l'extérieur : Eyelet hydrophobe
- À l'intérieur : tissu éponge hydrophile
- Empiècement haut ou niveau du décolleté pour un maintien supplémentaire
- Bonnets préformés et sans couture
- Filet Microfibre semi aéré respirant dans le dos



**D performance 5566:**

- Außenware mit eingewirkten Luftflächern
- Innen hochfunktionelles Piqué
- Einzigartiger Feuchtigkeitstransport durch die Materialkombination
- Nahtlos geformtes Cup
- Atmungsaktiver Netzrücken

**EN performance 5566:**

- Perforated outer fabric for air circulation
- Inside highly functional piqué
- Unique moisture transport thanks to the combination of materials
- Seamless formed cups
- Breathable net back

**F performance 5566:**

- Matière extérieure microperforée pour une aération optimale
- Intérieur en tissu piqué hautement fonctionnel
- Évacuation efficace de la transpiration assurée par la combinaison de plusieurs matières
- Bonnets pré-moulés et sans couture
- Filet Microfibre semi aéré respirant dans le dos



**D performance wireX 5599:**

- Ergonomisch geschnittene Komfort-träger
- Perfekter Tragekomfort durch außen aufliegende 3/4 Bügelkonstruktion
- Die luftige Materialkombination sorgt für ein perfektes Sweat Management
- Träger können als X-Back Variante getragen werden
- Gemoldete Cups aus gelochter Ware außen und weichem Piqué innen, für einen maximalen Support

**EN performance wireX 5599:**

- Ergonomically tailored comfort straps
- Perfect comfort thanks to 3/4 outer wire construction
- The airy material mix ensures perfect sweat management
- The straps can also be worn as a cross-back
- Moulded cups made from perforated fabric on the outside and soft piqué on the inside for maximum support

**F performance wireX 5599:**

- Bretelles confortables et ergonomiques
- Confort de port parfait grâce une armature 3/4 à l'extérieur du bonnet, sans contact avec la peau
- La combinaison de matières aérées assure une parfaite gestion de la transpiration
- Les bretelles peuvent être portées en variante X-Back
- Bonnets moulés en matière perforée à l'extérieur et piqué doux à l'intérieur, pour un maintien maximal

**ES performance wireX 5599:**

- Tirantes confort de corte ergonómico
- Perfecta comodidad de uso gracias a la construcción de aros de 3/4 situados en el exterior de la copa
- La combinación de materiales transpirables asegura una perfecta gestión del sudor
- Los tirantes se pueden llevar cruzados en la espalda con la variante X-Back
- Copas preformadas de material perforado en el exterior y piqué suave en el interior, para una máxima sujeción

**I performance wireX 5599:**

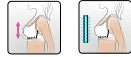
- Spalline comode dal taglio ergonomico
- Comfort perfetto grazie alla costruzione con ferretto a 3/4 all'esterno
- La combinazione di materiali ariosi garantisce una perfetta gestione del sudore
- Le spalline possono essere indossate nella variante X-Back
- Coppe preformate in materiale traforato all'esterno e morbido piqué all'interno, per il massimo sostegno

**NL performance wireX 5599:**

- Ergonomisch gesneden comfortschouderbanden
- Perfect draagcomfort dankzij de 3/4 beugelconstructie aan de buitenkant
- De luchtige materiaalcombinatie zorgt voor een perfect sweat management
- Schouderbanden kunnen als X-Back-variant worden gedragen
- Voorgevormde cups van geperforeerd materiaal aan de buitenkant en zacht piqué aan de binnenkant, voor maximale ondersteuning

# MOMENTUM NEW COLOUR 844 LIME LIGHT

STYLE 5529 · A4



70% PES, 15% PA, 15% EL

Cup: A

D/EUR: 70 – 100  
GB/US: 32 – 44  
France: 85 – 115  
Italia: 2 – 8

001	006
468	753
844	

Cup: B

D/EUR: 65 – 100  
GB/US: 30 – 44  
France: 80 – 115  
Italia: 1 – 8

001	006
468	753
844	

Cup: B – F

D/EUR: 70 – 100  
GB/US: 32 – 44  
France: 85 – 115  
Italia: 2 – 8

548

Cup: C – E

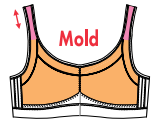
D/EUR: 65 – 110  
GB/US: 30 – 48  
France: 80 – 125  
Italia: 1 – 10

001	006
753	

Cup: C – E

D/EUR: 65 – 105  
GB/US: 30 – 46  
France: 80 – 120  
Italia: 1 – 9

468	844
-----	-----



## PERFORMANCE

STYLE 5566 · A4



62% PA, 21% PES, 17% EL

Cup: A – E

D/EUR: 70 – 95  
GB/US: 32 – 42  
France: 85 – 110  
Italia: 2 – 7

107	445
470	

Cup: F

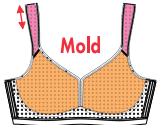
D/EUR: 70 – 90  
GB/US: 32 – 40  
France: 85 – 105  
Italia: 2 – 6

107	445
470	

Cup: G

D/EUR: 70 – 85  
GB/US: 32 – 38  
France: 85 – 100  
Italia: 2 – 5

107	445
470	



## PERFORMANCE WIRE X WITH UNDERWIRE

STYLE 5599 · A4



55% PA, 23% PES, 22% EL

Cup: B – G

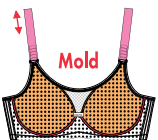
D/EUR: 70 – 90  
GB/US: 32 – 40  
France: 85 – 105  
Italia: 2 – 6

445

Cup: H

D/EUR: 70 – 85  
GB/US: 32 – 38  
France: 85 – 100  
Italia: 2 – 5

445



**D dynamiX star 5537:**

- Bequeme Handhabung, leichtes An- und Ausziehen durch weites Öffnen: "Easy On & Off"
- Für Anita exklusiv entwickeltes Trägersystem: ergonomisch geformt, gepolstert, vorne ultraleicht verstellbar und halbfern konzipiert
- Nahtlos geformtes Cup - außen hochfunktionelles Piqué, innen hydrophiles Frottee
- Netzeinsatz in der vorderen Mitte als zusätzliche Belüftungszone

**EN dynamiX star 5537:**

- Simple, convenient and easy to put on and take off due to the wide opening: "Easy On & Off" design
- Strap system developed exclusively for Anita: Ergonomically shaped, padded, very easy to adjust at the front and designed to be far from the neck
- Seamless cup - highly functional piqué on the outside, hydrophilic terry cloth on the inside
- Mesh insert in the center front as an additional ventilation zone

**F dynamiX star 5537:**

- Pratique, habillage et déshabillage faciles grâce à sa grande ouverture : "Easy On & Off"
- Système de bretelles développé en exclusivité pour Anita : ergonomiques, molletonnées, à réglage ultra simple sur l'avant et éloignées du cou
- Bonnet moulé sans couture ; tricot piqué à fonction élevée à l'extérieur, tissu éponge hydrophile à l'intérieur
- Emplacement en filet centré à l'avant. Zone d'aération supplémentaire

**ES dynamiX star 5537:**

- Práctico y cómodo de poner y quitar gracias a su amplia abertura "Easy On & Off"
- Sistema de tirantes desarrollado en exclusiva para Anita: forma ergonómica, acolchados, fácilmente regulables en la zona delantera y más alejados del cuello
- Copas preformadas sin costuras, exterior de tejido piqué altamente funcional e interior de tejido de rizo hidrófilo
- Inserción de tejido en red en el centro delantero como zona de aireación

**I dynamiX star 5537:**

- Comodo e pratico, facile da indossare grazie alle generose aperture: "Easy On & Off"
- Sistema spalline sviluppato in esclusiva per Anita: ergonomicità, imbottitura, regolazione anteriore estremamente facile e posizionamento lontano dal collo
- Coppa senza cuciture - parte esterna in tessuto di piqué dall'elevata funzionalità, parte interna in frotté di microfibra idrofila
- Inserto in rete fra le coppe per una maggiore aerazione

**NL dynamiX star 5537:**

- Gemakkelijk aan- en uittrekken dankzij wijde opening: "Easy On & Off"
- Voor Anita exclusief ontwikkeld schouderbandsysteem: ergonomisch gevormd, gepolsterd, ultra makkelijk verstelbaar en met een ruime hals
- Naadloos gevormde cup - van buiten hoogfunctioneel Piqué, van binnen hydrofiële Frottee
- Net inzet middenvoor als extra luchtcirculatiezone

**D air control 5533:**

- Doppellagige, nahtlos geformte Cups
- Ergonomisch geschnittene Komfortträger
- Atmungsaktiver Netzrücken

**EN air control 5533:**

- Double layered, seamless cups
- Ergonomically tailored comfort straps
- Breathable net back

**F air control 5533:**

- Bonnets doublés, préformés et sans couture
- Bretelles confort à coupe ergonomique
- Filet Microfibre semi aéré respirant dans le dos

**ES air control 5533:**

- Copas de doble capa, preformadas sin costuras
- Tirantes confort de corte ergonómico
- Espalda fabricada en tejido de red transpirable

**I air control 5533:**

- Coppe preformate a doppio strato, prive di cuciture
- Spalline comfort preformate ergonomicamente
- Parte posteriore in rete traspirante

**NL air control 5533:**

- Dubbellaags, naadloos gevormde cups
- Ergonomisch gesneden comfort-schouderbanden
- Ademend rugpand

**D momentum 5519:**

- Außen hydrophobes Eyelet
- Innen hydrophiles Frottee
- Nahtlos geformtes Cup
- Ergonomisch geschnittene Komfortträger
- Atmungsaktiver Netzrücken

**EN momentum 5519:**

- Outside features hydrophobic eyelet fabric
- Inner lining of hydrophilic towelling
- Seamless shaped cup
- Ergonomically tailored comfort straps
- Breathable net back

**F momentum 5519:**

- À l'extérieur : Eyelet hydrophobe
- À l'intérieur : tissu éponge hydrophile
- Bonnets préformés et sans couture
- Bretelles confort à coupe ergonomique
- Filet Microfibre semi aéré respirant dans le dos

**ES momentum 5519:**

- Tejido Eyelet hidrofóbico en el exterior
- Tejido de rizo hidrófilo en el interior
- Copas preformadas sin costuras
- Tirantes confort de corte ergonómico
- Red transpirable en la espalda

**I momentum 5519:**

- Parte esterna in tessuto Eyelet idrorepellente
- Parte interna in frotté di microfibra idrofila
- Coppe preformate senza cuciture
- Spalline comfort preformate ergonomicamente
- Parte posteriore in rete traspirante

**NL momentum 5519:**

- Buitenkant hydrofoob Eyelet
- Binnenkant hydrofiële frottee
- Naadloos gevormde cups
- Ergonomisch gesneden comfort-schouderbanden
- Ademend rugpand

# DYNAMIX STAR NEW COLOUR 107 SMART ROSE

STYLE 5537 · A4



45% PES, 35% PA, 10% EL,  
10% PU

Cup: A – E

D/EUR: 70 – 90  
GB/US: 32 – 40  
France: 85 – 105  
Italia: 2 – 6

107	254
364	445

Cup: F

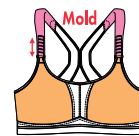
D/EUR: 70 – 85  
GB/US: 32 – 38  
France: 85 – 100  
Italia: 2 – 5

107	254
364	445

Cup: G

D/EUR: 70 – 80  
GB/US: 32 – 36  
France: 85 – 95  
Italia: 2 – 4

107	254
364	445



## AIR CONTROL

STYLE 5533 · A4



60% PES, 31% PA, 9% EL

Cup: A – E

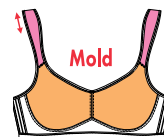
D/EUR: 70 – 95  
GB/US: 32 – 42  
France: 85 – 110  
Italia: 2 – 7

001	006
-----	-----

Cup: F – G

D/EUR: 70 – 90  
GB/US: 32 – 40  
France: 85 – 105  
Italia: 2 – 6

001	006
-----	-----



## MOMENTUM WITH UNDERWIRE

STYLE 5519 · A4



50% PES, 38% PA, 12% EL

Cup: B – G

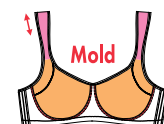
D/EUR: 65 – 90  
GB/US: 30 – 40  
France: 80 – 105  
Italia: 1 – 6

001	753
-----	-----

Cup: H

D/EUR: 65 – 85  
GB/US: 30 – 38  
France: 80 – 100  
Italia: 1 – 5

001	753
-----	-----



A1 = basic · A2 = light support · A3 = firm support · A4 = maximum support



**D light & firm 5521:**

- Atmungsaktives Material - Trockenes Gefühl
- Nahtlos geformtes Cup aus hochfunktionellem Material
- Die reduziert elastischen, verstellbaren Komfortträger sind im Schulterbereich zusätzlich verstärkt

**EN light & firm 5521:**

- Breathable fabric - dry feeling
- Seamless shaped cup made of highly-functional fibre
- Adjustable, low-elasticity comfort straps, with additional reinforcement at the shoulder

**F light & firm 5521:**

- Matière respirante pour une sensation sèche de la peau
- Bonnets préformés sans couture en fibre très fonctionnelle
- Bretelles de confort à élasticité réduite, renforcées au niveau des épaules pour un excellent maintien

**ES light & firm 5521:**

- Material transpirable - piel seca
- Copas preformadas (elaboradas sin costuras) de fibra altamente funcional
- Tirantes confort de reducida elasticidad, reforzados especialmente en la zona del hombro

**I light & firm 5521:**

- Materiale traspirante - mantiene la pelle fresca e asciutta
- Coppa preformata priva di cuciture in fibra altamente funzionale
- Le spalline confort ad elasticità ridotta sono dotate di un rinforzo aggiuntivo in prossimità delle spalle

**NL light & firm 5521:**

- Ademend materiaal - Droger gevoel
- Naadloos gevormde cups van hoogfunctionele vezel
- De gereduceerd elastische en verstelbare comfortschouderbanden zijn op de schouder versterkt



**D frontline open 5523:**

- Vorderverschluss
- Flach geformte, nahtlose Cups
- Unterbrustband besonders weich und flach
- Reduziert elastische Klettverschluss-Komfortträger, stufenlos vorne verstellbar

**EN frontline open 5523:**

- Front fastener
- Flat, shaped seamless cups
- Very soft, flat underbust band
- Low elasticity Velcro-type fastener comfort straps with infinitely variable adjustment at front

**F frontline open 5523:**

- Fermeture à l'avant
- Bonnets lisses et sans couture
- Basque sous poitrine particulièrement douce et lisse
- Bretelles de confort à élasticité réduite, fermeture scratch et réglage continu à l'avant

**ES frontline open 5523:**

- Cierre delantera
- Copas preformadas, sin costuras
- Banda bajopecho especialmente suave y plana
- Tirantes confort de reducida elasticidad, regulables mediante velcro en la parte delantera

**I frontline open 5523:**

- chiusura anteriore
- Coppe preformate (senza cuciture) e piatte
- Sottoseno particolarmente morbido e piatto
- Spalline confort ad elasticità ridotta, regolabili sul davanti tramite chiusura a strappo

**NL frontline open 5523:**

- Voorsluiting
- Vlak gevormde, naadloze cups
- Ondercupband bijzonder zacht en vlak
- Gereduceerd elastische comfortschouderbanden met klittenbandsluiting

# LIGHT & FIRM

STYLE 5521 · A3



80% PA, 20% EL

Cup: A – C

D/EUR: 70 – 100  
GB/US: 32 – 44  
France: 85 – 115  
Italia: 2 – 8

001	006
107	722

Cup: D – E

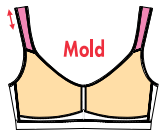
D/EUR: 70 – 95  
GB/US: 32 – 42  
France: 85 – 110  
Italia: 2 – 7

001	006
107	722

Cup: F – G

D/EUR: 70 – 90  
GB/US: 32 – 40  
France: 85 – 105  
Italia: 2 – 6

001	006
107	722



# FRONTLINE OPEN

STYLE 5523



40% PA, 25% PES,  
20% EL, 15% CO

Cup: A – C

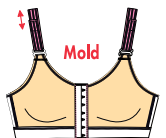
D/EUR: 65 – 100  
GB/US: 30 – 44  
France: 80 – 115  
Italia: 1 – 8

001	006
753	

Cup: D – E

D/EUR: 65 – 95  
GB/US: 30 – 42  
France: 80 – 110  
Italia: 1 – 7

001	006
753	

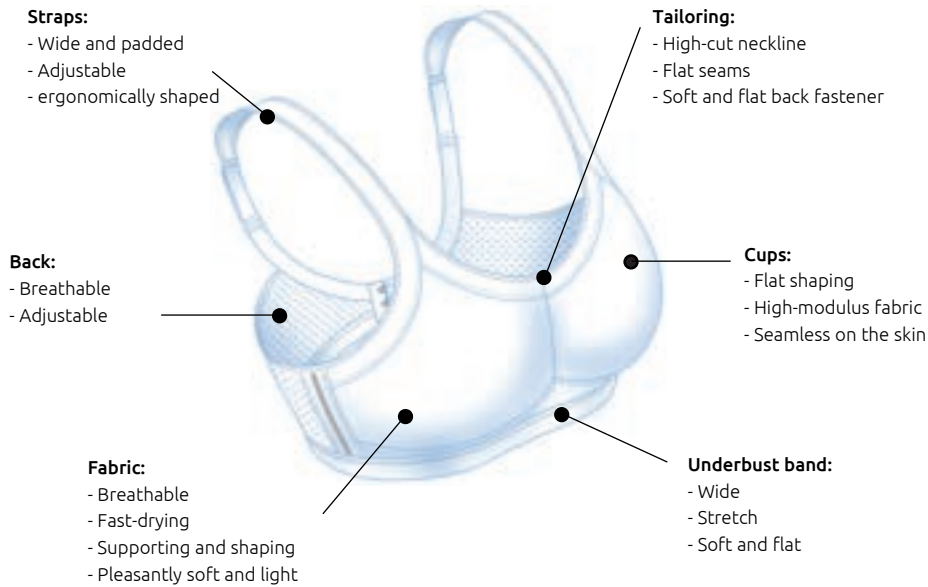




PanAlp Delta Top STYLE 5562.001 + sport tights compression STYLE 1687.001



# Employed materials and their advantages



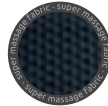
Extremely firm support for high-impact and intensity sports types



The **easy-care CoolMax® net** is soft and breathable. It transports the moisture away from the body, dries very quickly and therefore ensures a cool and pleasant skin milieu.



Firm support for sports types with medium impact and intensity



Structure that massages and tones - Power fabric with massaging effect



Less movement  
An optimum sports bra can significantly reduce the upward and downward movement of the sensitive breast tissue



Patented, triangle-shaped and breathable foam shell



Anita Sweat Management  
The interaction of two breathable hi-tech fabrics permits optimum, active „Sweat Management“



The RWS seal includes the following key features:  
Animal Welfare - Land Management - Social Responsibility



3/4 bow construction on the outside for more comfort and support

## Support factor

- A1 = basic
- A2 = light support
- A3 = firm support
- A4 = maximum support

## Fabric and material explanations

- CO = cotton
- EL = elastane
- PA = polyamide
- PES = polyester
- PU = polyurethane
- WO = wool

## Special features

- Adjustable straps
- Underwired
- Mold** Seamless cups/  
moulded cups

- maximum support
- firm support
- comfort straps
- massage

- relief straps
- padded cups
- double-layered

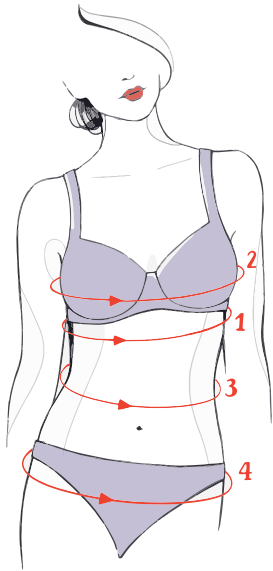
## Colour key

= black	= heather grey	= python	= grey/melange	= deep sand
= white	= black/kalahari	= black/anthracite	= anthracite/black	= dusty rose
= champagne	= kalahari	= iconic grey	= electric pink	= desert
= smart rose	= peacock/anthracite	= black/ gold	= coral/ anthracite	= berry
= cherry red	= maritime blue	= anthracite/melange	= rosewood	= jungle
= lipstick	= anthracite	= orinoco	= crystal	= lime light

# How to find the perfect size for your customer step by step

When it comes to bras, base your measurements on a well-fitting bra, preferably one without underwires

The measured size serves as a guideline. The actual size for the best comfort of each customer can only be determined by trying the item on!



## Underbust measurement

Take the measurement (1) by holding the tape directly under the bust. This measurement determines the bra size.

## Bust measurement

Take the bust measurement (2) by holding the tape horizontally over the widest point of the breast.

## Use the chart to find out the cup size

## Pants size

To work out the pants size, measure the waist (3) by holding the tape horizontally around the smallest part of the waist. Measure the hips (4) by holding the tape horizontally around the widest part of the hips.

If there is a considerable difference between the waist and hip measurement, always take the larger size.

D/EUR	32	34	36	38	40	42	44	46	48	50	52	54	56	58	60
Konfektionsgröße	XS	XS	S	S	M	M	L	L	XL	XL	XXL	XXL	XXXL	XXXL	XXXXL
Miederhosengröße	55	60	65	70	75	80	85	90	95	100	105	110	115	120	125
Taillenumfang cm (3)	52-57	57-62	62-67	67-72	72-77	77-82	82-87	87-92	92-97	97-102	102-107	107-112	112-117	117-122	122-127
Hüftumfang cm (4)	81-85	85-89	89-93	93-97	97-101	101-105	105-109	109-113	113-117	117-121	121-125	125-129	129-133	133-137	137-141
Unterbrustumfang cm (1)	57,5-62,5	62,5-67,5	67,5-72,5	72,5-77,5	77,5-82,5	82,5-87,5	87,5-92,5	92,5-97,5	97,5-102,5	102,5-107,5	107,5-112,5	112,5-117,5	117,5-122,5	122,5-127,5	127,5-132,5
Unterbrustgröße	60	65	70	75	80	85	90	95	100	105	110	115	120	125	130
Brustumfang cm (2)															
AA	70-72	75-77	80-82	85-87	90-92	95-97	100-102	105-107	110-112	115-117	120-122	125-127	130-132	135-137	140-142
A	72-74	77-79	82-84	87-89	92-94	97-99	102-104	107-109	112-114	117-119	122-124	127-129	132-134	137-139	142-144
B	74-76	79-81	84-86	89-91	94-96	99-101	104-106	109-111	114-116	119-121	124-126	129-131	134-136	139-141	144-146
C	76-78	81-83	86-88	91-93	96-98	101-103	106-108	111-113	116-118	121-123	126-128	131-133	136-138	141-143	146-148
D	78-80	83-85	88-90	93-95	98-100	103-105	108-110	113-115	118-120	123-125	128-130	133-135	138-140	143-145	148-150
E	80-82	85-87	90-92	95-97	100-102	105-107	110-112	115-117	120-122	125-127	130-132	135-137	140-142	145-147	150-152
F	82-84	87-89	92-94	97-99	102-104	107-109	112-114	117-119	122-124	127-129	132-134	137-139	142-144	147-149	152-154
G	84-86	89-91	94-96	99-101	104-106	109-111	114-116	119-121	124-126	129-131	134-136	139-141	144-146	149-151	154-156
H	86-88	91-93	96-98	101-103	106-108	111-113	116-118	121-123	126-128	131-133	136-138	141-143	146-148	151-153	156-158
I	88-90	93-95	98-100	103-105	108-110	113-115	118-120	123-125	128-130	133-135	138-140	143-145	148-150	153-155	158-160
J	90-92	95-97	100-102	105-107	110-112	115-117	120-122	125-127	130-132	135-137	140-142	145-147	150-152	155-157	160-162

## Cross-sizing chart

75B	75C	75D	75E	75F
80B	80C	80D	80E	80F
85B	85C	85D	85E	85F
90B	90C	90D	90E	90F
95B	95C	95D	95E	95F

The cross-sizing chart provides a simple way of finding your best fit. As you can see in the example shown here, your size has been measured as 85D. This can, however, be converted into two other „cross“, or equivalent, sizes.

## ESSENTIALS 1342 + 1343 + 1346 + 1347 + 1842\*

		D/EUR	GB	US	France	Italia
1342 C1	S/M-L/XL	36/42-44/50	30/36-38/44	6/12-14/20	38/44-46/52	40/46-48/54
1343 C1	S/M-L/XL	36/42-44/50	30/36-38/44	6/12-14/20	38/44-46/52	40/46-48/54
1346 C1	S/M-L/XL	36/42-44/50	30/36-38/44	6/12-14/20	38/44-46/52	40/46-48/54
1347 C1	S/M-L/XL	36/42-44/50	30/36-38/44	6/12-14/20	38/44-46/52	40/46-48/54
1842 C1	S/M-L/XL	36/42-44/50	30/36-38/44	6/12-14/20	38/44-46/52	40/46-48/54

\* This chart should be taken as a guide. We recommend buying the size that feels right for you.

## ESSENTIALS 5400\*

FR	IT	GB/US	D/EUR	Cup A	Cup B	Cup C	Cup D	Cup E
85	2	32	70	S	S	S	S	M
90	3	34	75	S	S	S	M	M
95	4	36	80	S	S	M	L	L
100	5	38	85	M	M	L	L	XL
105	6	40	90	M	L	L	XL	XL
110	7	42	95	L	L	XL	XL	
115	8	44	100	XL	XL			
120	9	46	105	XL	XL			

GB/US															
Dress size GB	26	28	30	32	34	36	38	40	42	44	46	48	50	52	54
Dress size US	2	4	6	8	10	12	14	16	18	20	22	24	26	28	30
Dress size int.	XS	XS	S	S	M	M	L	L	XL	XL	XXL	XXL	XXXL	XXXL	XXXXL
Panty girdle size	26	28	30	32	34	36	38	40	42	44	46	48	50	52	54
Waist measurement inch (3)	20,4-22,4	22,4-24,4	24,4-26,4	26,4-28,3	28,3-30,3	30,3-32,3	32,3-34,3	34,3-36,2	36,2-38,2	38,2-40,2	40,2-42,1	42,1-44,1	44,1-46,1	46,1-48,0	48,0-50,0
Hip measurement inch (4)	31,8-33,4	33,4-35,0	35,0-36,6	36,6-38,2	38,2-39,8	39,8-41,3	41,3-42,9	42,9-44,5	44,5-46,1	46,1-47,6	47,6-49,2	49,2-50,8	50,8-52,4	52,4-53,9	53,9-55,5
Underbust measurement inch (1)	22,6-24,6	24,6-26,6	26,6-28,5	28,5-30,5	30,5-32,5	32,5-34,4	34,4-36,4	36,4-38,4	38,4-40,4	40,4-42,3	42,3-44,3	44,3-46,3	46,3-48,2	48,2-50,2	50,2-52,2
Underbust size	28	30	32	34	36	38	40	42	44	46	48	50	52	54	56
Bust measurement in inch (2)															
AA	27,5-28,3	29,5-30,3	31,5-32,2	33,4-34,2	35,4-36,2	37,4-38,1	39,3-40,1	41,3-42,1	43,3-44,0	45,2-46,0	47,2-48,0	49,2-50,0	51,2-51,9	53,1-53,9	55,1-55,9
A	28,3-29,1	30,3-31,0	32,2-33,0	34,2-35,0	36,2-37,0	38,1-38,9	40,1-40,9	42,1-42,9	44,0-44,8	46,0-46,8	48,0-48,8	50,0-50,8	51,9-52,7	53,9-54,7	55,9-56,7
B	29,1-29,9	31,1-31,8	33,0-33,8	35,0-35,8	37,0-37,8	38,9-39,7	40,9-41,7	42,9-43,7	44,8-45,6	46,8-47,6	48,8-49,6	50,8-51,6	52,7-53,5	54,7-55,5	56,7-57,5
C	29,9-30,7	31,8-32,6	33,8-34,6	35,8-36,6	37,8-38,5	39,7-40,5	41,7-42,5	43,7-44,4	45,6-46,4	47,6-48,4	49,6-50,4	51,6-52,3	53,5-54,3	55,5-56,3	57,5-58,2
D	30,7-31,5	32,6-33,4	34,6-35,4	36,6-37,4	38,5-39,3	40,5-41,3	42,5-43,3	44,4-45,2	46,4-47,2	48,4-49,2	50,4-51,2	52,3-53,1	54,3-55,1	56,3-57,1	58,2-59,0
E	31,5-32,2	33,4-34,2	35,4-36,2	37,4-38,1	39,3-40,1	41,3-42,1	43,3-44,0	45,2-46,0	47,2-48,0	49,2-50,0	51,2-51,9	53,1-53,9	55,1-55,9	57,1-57,9	59,0-59,8
F	32,2-33,0	34,2-35,0	36,2-37,0	38,1-38,9	40,1-40,9	42,1-42,9	44,0-44,8	46,0-46,8	48,0-48,8	50,0-50,7	51,9-52,7	53,9-54,7	55,9-56,7	57,9-58,6	59,8-60,6
G	33,0-33,8	35,0-35,8	37,0-37,8	38,9-39,7	40,9-41,7	42,9-43,7	44,8-45,6	46,8-47,6	48,8-49,6	50,7-51,5	52,7-53,5	54,7-55,5	56,7-57,5	58,6-59,4	60,6-61,4
H	33,8-34,6	35,8-36,6	37,8-38,5	39,7-40,5	41,7-42,5	43,7-44,4	45,6-46,4	47,6-48,4	49,6-50,3	51,5-52,3	53,5-54,3	55,5-56,3	57,5-58,2	59,4-60,2	61,4-62,2
I	34,6-35,4	36,6-37,4	38,5-39,3	40,5-41,3	42,5-43,3	44,4-45,2	46,4-47,2	48,4-49,2	50,3-51,1	52,3-53,1	54,3-55,1	56,3-57,1	58,2-59,0	60,0-61,0	62,2-63,0
J	35,4-36,2	37,4-38,1	39,3-40,1	41,3-42,1	43,3-44,0	45,2-46,0	47,2-48,0	49,2-50,0	51,1-51,9	53,1-53,9	55,1-55,9	57,1-57,9	59,0-59,8	61,0-61,8	63,0-63,8

Italy															
Taglia abbigliamento	36	38	40	42	44	46	48	50	52	54	56	58	60	62	64
Taglia abbigliamento int.	XS	XS	S	S	M	M	L	L	XL	XL	XXL	XXL	XXXL	XXXL	XXXXL
Misura guaina	0	0	1	2	3	4	5	6	7	8	9	10	11	12	13
Circonferenza del girovita cm (3)	52-57	57-62	62-67	67-72	72-77	77-82	82-87	87-92	92-97	97-102	102-107	107-112	112-117	117-122	122-127
Circonferenza dei fianchi cm (4)	81-85	85-89	89-93	93-97	97-101	101-105	105-109	109-113	113-117	117-121	121-125	125-129	129-133	133-137	137-141
Circonferenza del sottoseno cm (1)	57,5-62,5	62,5-67,5	67,5-72,2	72,5-77,5	77,5-82,5	82,5-87,5	87,5-92,5	92,5-97,5	97,5-102,5	102,5-107,5	107,5-112,5	112,5-117,5	117,5-122,5	122,5-127,5	127,5-132,5
Misura del sottoseno	0	1	2	3	4	5	6	7	8	9	10	11	12	13	14
Circonferenza seno in cm (2)															
AA	70-72	75-77	80-82	85-87	90-92	95-97	100-102	105-107	110-112	115-117	120-122	125-127	130-132	135-137	140-142
A	72-74	77-79	82-84	87-89	92-94	97-99	102-104	107-109	112-114	117-119	122-124	127-129	132-134	137-139	142-144
B	74-76	79-81	84-86	89-91	94-96	99-101	104-106	109-111	114-116	119-121	124-126	129-131	134-136	139-141	144-146
C	76-78	81-83	86-88	91-93	96-98	101-103	106-108	111-113	116-118	121-123	126-128	131-133	136-138	141-143	146-148
D	78-80	83-85	88-90	93-95	98-100	103-105	108-110	113-115	118-120	123-125	128-130	133-135	138-140	143-145	148-150
E	80-82	85-87	90-92	95-97	100-102	105-107	110-112	115-117	120-122	125-127	130-132	135-137	140-142	145-147	150-152
F	82-84	87-89	92-94	97-99	102-104	107-109	112-114	117-119	122-124	127-129	132-134	137-139	142-144	147-149	152-154
G	84-86	89-91	94-96	99-101	104-106	109-111	114-116	119-121	124-126	129-131	134-136	139-141	144-146	149-151	154-156
H	86-88	91-93	96-98	101-103	106-108	111-113	116-118	121-123	126-128	131-133	136-138	141-143	146-148	151-153	156-158
I	88-90	93-95	98-100	103-105	108-110	113-115	118-120	123-125	128-130	133-135	138-140	143-145	148-150	153-155	158-160
J	90-92	95-97	100-102	105-107	110-112	115-117	120-122	125-127	130-132	135-137	140-142	145-147	150-152	155-157	160-162

France															
Taille de confection	34	36	38	40	42	44	46	48	50	52	54	56	58	60	62
Taille de confection int.	XS	XS	S	S	M	M	L	L	XL	XL	XXL	XXL	XXXL	XXXL	XXXXL
Taille de gaine	80	85	90	95	100	105	110	115	120	125	130	135	140	145	150
Tour de taille cm (3)	52-57	57-62	62-67	67-72	72-77	77-82	82-87	87-92	92-97	97-102	102-107	107-112	112-117	117-122	122-127
Tour de hanches cm (4)	81-85	85-89	89-93	93-97	97-101	101-105	105-109	109-113	113-117	117-121	121-125	125-129	129-133	133-137	137-141
Tour sous-pitrine cm (1)	57,5-62,5	62,5-67,5	67,5-72,5	72,5-77,5	77,5-82,5	82,5-87,5	87,5-92,5	92,5-97,5	97,5-102,5	102,5-107,5	107,5-112,5	112,5-117,5	117,5-122,5	122,5-127,5	127,5-132,5
Tour sous-pitrine	75	80	85	90	95	100	105	110	115	120	125	130	135	140	145
Tour de poitrine in cm (2)															
AA	70-72	75-77	80-82	85-87	90-92	95-97	100-102	105-107	110-112	115-117	120-122	125-127	130-132	135-137	137-139
A	72-74	77-79	82-84	87-89	92-94	97-99	102-104	107-109	112-114	117-119	122-124	127-129	132-134	137-139	142-144
B	74-76	79-81	84-86	89-91	94-96	99-101	104-106	109-111	114-116	119-121	124-126	129-131	134-136	139-141	144-146
C	76-78	81-83	86-88	91-93	96-98	101-103	106-108	111-113	116-118	121-123	126-128	131-133	136-138	141-143	146-158
D	78-80	83-85	88-90	93-95	98-100	103-105	108-110	113-115	118-120	123-125	128-130	133-135	138-140	143-145	158-160
E	80-82	85-87	90-92	95-97	100-102	105-107	110-112	115-117	120-122	125-127	130-132	135-137	140-142	145-147	160-162
F	82-84	87-89	92-94	97-99	102-104	107-109	112-114	117-119	122-124	127-129	132-134	137-139	142-144	147-149	162-164
G	84-86	89-91	94-96	99-101	104-106	109-111	114-116	119-121	124-126	129-131	134-136	139-141	144-146	149-151	164-166
H	86-88	91-93	96-98	101-103	106-108	111-113	116-118	121-123	126-128	131-133	136-138	141-143	146-148	151-153	166-168
I	88-90	93-95	98-100	103-105	108-110	113-115	118-120	123-125	128-130	133-135	138-140	143-145	148-150	153-155	168-170
J	90-92	95-97	100-102	105-107	110-112	115-117	120-122	125-127	130-132	135-137	140-142	145-147	150-152	155-153	170-172



## PANALP™ WOOL



STYLE 5555 - A3

44% PA, 32% PES,  
14% WO, 10% EL  
lining: 82% WO,  
12% PA, 6% EL



STYLE 1655 - A2

56% WO, 32% PA,  
12% EL



6-7

	Cup	D/EUR	GB	US	France	Italia
5555 A3	A - C	70 - 95	32 - 42	32 - 42	85 - 110	2 - 7
	D - E	70 - 90	32 - 40	32 - 40	85 - 105	2 - 6
	F - G	70 - 85	32 - 38	32 - 38	85 - 100	2 - 5
1655 A2		36 - 48	30 - 42	6 - 18	38 - 50	40 - 52



## PANALP™ AIR



STYLE 5560 - A3

60% PA, 25% EL,  
15% PES

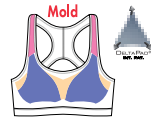


6-7

	Cup	D/EUR	GB	US	France	Italia
5560 A3	A - D	70 - 95	32 - 42	32 - 42	85 - 110	2 - 7
	E - F	70 - 85	32 - 38	32 - 38	85 - 100	2 - 5



## PANALP™ DELTA TOP



STYLE 5562 - A3

62% PA, 32% EL, 6% PES  
cup: 55% PU, 45% PES



4-7

	Cup	D/EUR	GB	US	France	Italia
5562 A3	A - D	70 - 90	32 - 40	32 - 40	85 - 105	2 - 6
	E	70 - 85	32 - 38	32 - 38	85 - 100	2 - 5

New style spring/summer 2023





## AIR CONTROL DELTAPAD

006 107 115 283 408 474 595



STYLE 5544 · A4

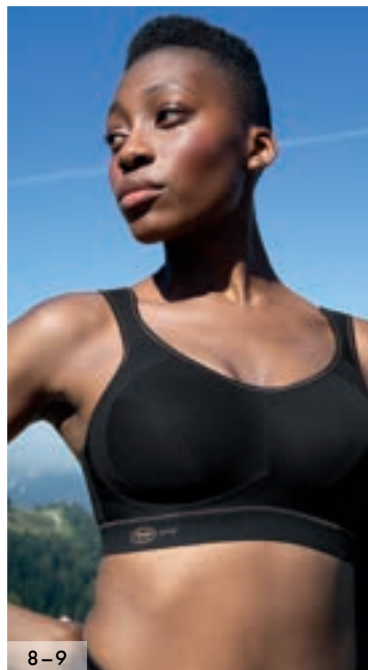
49% PA, 39% PES,  
12% EL  
cup: 55% PU, 45% PES



	Cup	D/EUR	GB	US	France	Italia
5544 A4	A - E	70 - 95	32 - 42	32 - 42	85 - 110	2 - 7
	A - E	65 - 95	30 - 42	30 - 42	80 - 110	1 - 7
	AA	70 - 95	32 - 42	32 - 42	85 - 110	2 - 7
	AA - E	65 - 95	30 - 42	30 - 42	80 - 110	1 - 7
	F	65 - 90	30 - 40	30 - 40	80 - 105	1 - 6
	F	70 - 90	32 - 40	32 - 40	85 - 105	2 - 6
	G	65 - 85	30 - 38	30 - 38	80 - 100	1 - 5
	G	70 - 85	32 - 38	32 - 38	85 - 100	2 - 5
	H	65 - 80	30 - 36	30 - 36	80 - 95	1 - 4

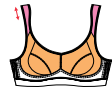
8-9

115 New colour spring/summer 2023



## EXTREME CONTROL

001 006 254 416 471 553

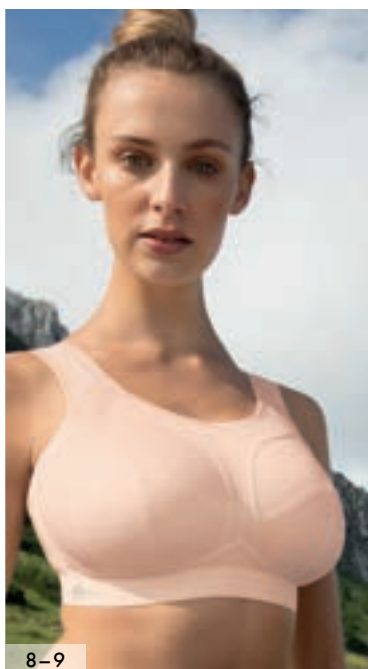


STYLE 5527 · A4

76% PES, 19% PA,  
5% EL

	Cup	D/EUR	GB	US	France	Italia
5527 A4	B - E	65 - 105	30 - 46	30 - 46	80 - 120	1 - 9
	F - G	65 - 100	30 - 44	30 - 44	80 - 115	1 - 8
	H	65 - 95	30 - 42	30 - 42	80 - 110	1 - 7

8-9



## EXTREME CONTROL+

107 445



STYLE 5567 · A4

51% PES, 44% PA,  
5% EL



	Cup	D/EUR	GB	US	France	Italia
5567 A4	F - H	65 - 110	30 - 48	30 - 48	80 - 125	1 - 10
	I	65 - 100	30 - 44	30 - 44	80 - 115	1 - 8
	J	65 - 95	30 - 42	30 - 42	80 - 110	1 - 7
	K	65 - 90	30 - 40	30 - 40	80 - 105	1 - 6

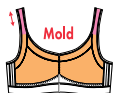
8-9





## MOMENTUM

001 006 468 **753** 844



STYLE 5529 · A4

70% PES, 15% PA,  
15% EL

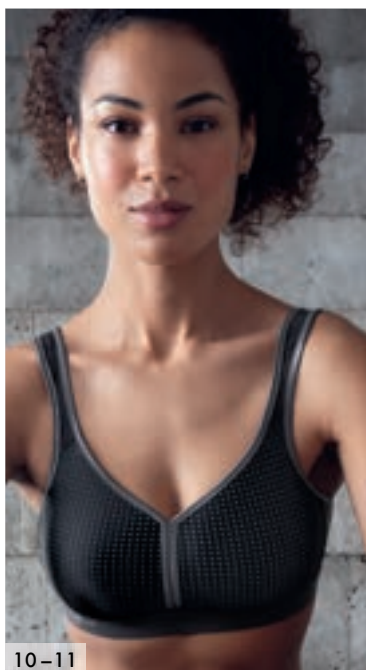


reddot design award  
winner 2011

	Cup	D/EUR	GB	US	France	Italia
5529 A4	A	70 – 100	32 – 44	32 – 44	85 – 115	2 – 8
	B	65 – 100	30 – 44	30 – 44	80 – 115	1 – 8
	B – F	70 – 100	32 – 44	32 – 44	85 – 115	2 – 8
	C – E	65 – 110	30 – 48	30 – 48	80 – 125	1 – 10
	C – E	65 – 105	30 – 46	30 – 46	80 – 120	1 – 9
	F	65 – 100	30 – 44	30 – 44	80 – 115	1 – 8
	G	65 – 95	30 – 42	30 – 42	80 – 110	1 – 7
	G	70 – 95	32 – 42	32 – 42	85 – 110	2 – 7
	H	65 – 85	30 – 38	30 – 38	80 – 100	1 – 5
	H	70 – 85	32 – 38	32 – 38	85 – 100	2 – 5

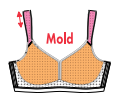
10-11

844 New colour



## PERFORMANCE

107 **445**

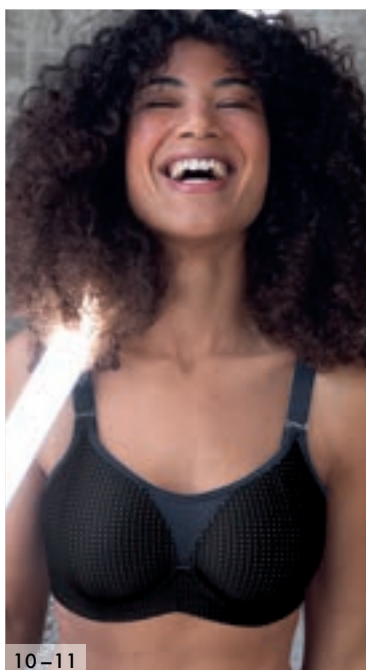


STYLE 5566 · A4

62% PA, 21% PES,  
17% EL

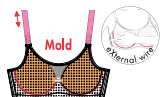
	Cup	D/EUR	GB	US	France	Italia
5566 A4	A – E	70 – 95	32 – 42	32 – 42	85 – 110	2 – 7
	F	70 – 90	32 – 40	32 – 40	85 – 105	2 – 6
	G	70 – 85	32 – 38	32 – 38	85 – 100	2 – 5

10-11



## PERFORMANCE WIREX

**445**



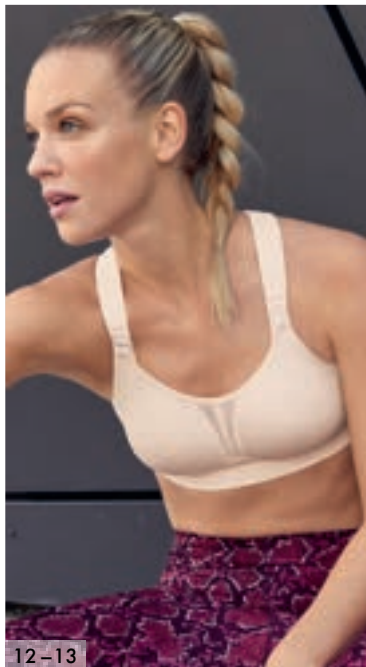
STYLE 5599 · A4

55% PA, 23% PES,  
22% EL

	Cup	D/EUR	GB	US	France	Italia
5599 A4	B – G	70 – 90	32 – 40	32 – 40	85 – 105	2 – 6
	H	70 – 85	32 – 38	32 – 38	85 – 100	2 – 5

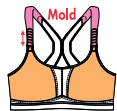
10-11





12-13

## DYNAMIX STAR



STYLE 5537 · A4

45% PES, 35% PA,  
10% EL, 10% PU



107 254 364 445

	Cup	D/EUR	GB	US	France	Italia
5537 A4	A - E	70 - 90	32 - 40	32 - 40	85 - 105	2 - 6
	F	70 - 85	32 - 38	32 - 38	85 - 100	2 - 5
	G	70 - 80	32 - 36	32 - 36	85 - 95	2 - 4

107 New colour



12-13

## AIR CONTROL



STYLE 5533 · A4

60% PES, 31% PA,  
9% EL

001 004

	Cup	D/EUR	GB	US	France	Italia
5533 A4	A - E	70 - 95	32 - 42	32 - 42	85 - 110	2 - 7
	F - G	70 - 90	32 - 40	32 - 40	85 - 105	2 - 6

# 51g\*

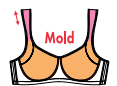
Our lightest  
sports bra

\*weighed 70C



12-13

## MOMENTUM WITH UNDERWIRE



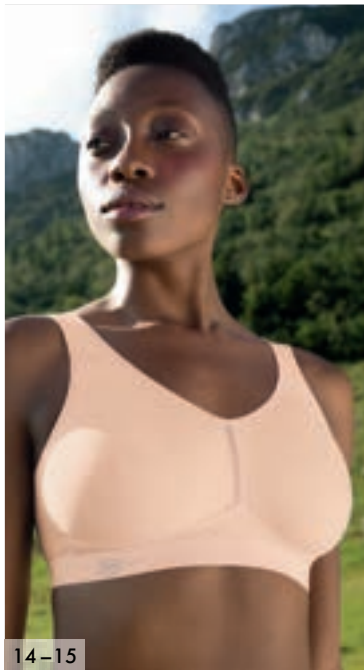
STYLE 5519 · A4

50% PES, 38% PA,  
12% EL

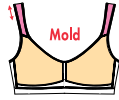
001 753

	Cup	D/EUR	GB	US	France	Italia
5519 A4	B - G	65 - 90	30 - 40	30 - 40	80 - 105	1 - 6
	H	65 - 85	30 - 38	30 - 38	80 - 100	1 - 5





## LIGHT & FIRM

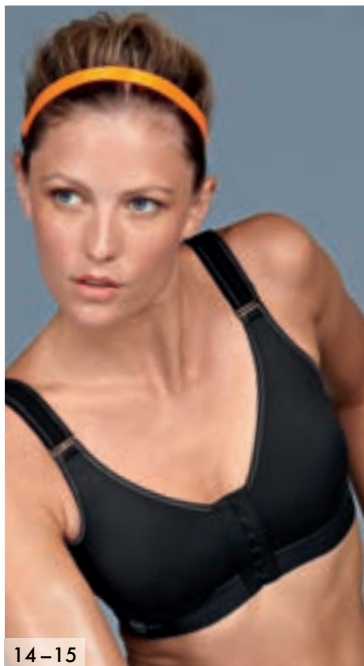


STYLE 5521 - A3  
80% PA, 20% EL

14-15

001 006 107 722

	Cup	D/EUR	GB	US	France	Italia
5521 A3	A - C	70 - 100	32 - 44	32 - 44	85 - 115	2 - 8
	D - E	70 - 95	32 - 42	32 - 42	85 - 110	2 - 7
	F - G	70 - 90	32 - 40	32 - 40	85 - 105	2 - 6



## FRONTLINE OPEN



STYLE 5523  
40% PA, 25% PES,  
20% EL, 15% CO

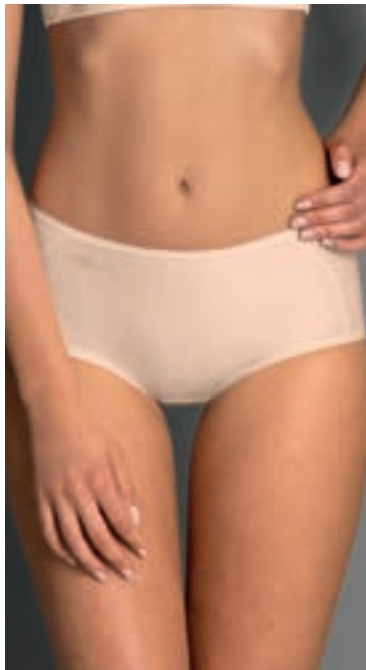
14-15

001 006 753

	Cup	D/EUR	GB	US	France	Italia
5523	A - C	65 - 100	30 - 44	30 - 44	80 - 115	1 - 8
	D - E	65 - 95	30 - 42	30 - 42	80 - 110	1 - 7







## SPORT PANTY

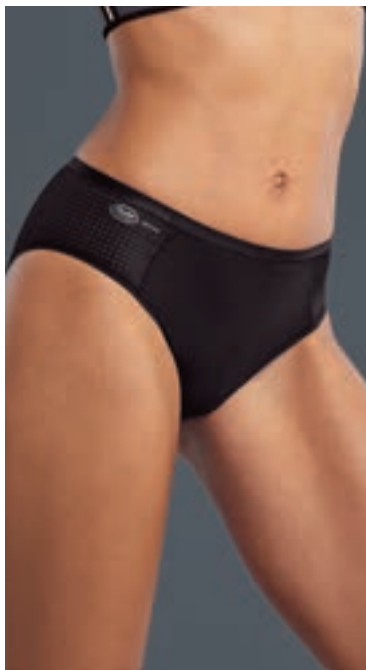


STYLE 1627 - A2  
80% PA, 20% EL

001 107 364 408

	Cup	D/EUR	GB	US	France	Italia
1627 A2		32 - 48	26 - 42	2 - 18	34 - 50	36 - 52
		36 - 48	30 - 42	6 - 18	38 - 50	40 - 52

- Sports briefs made of skin-friendly, breathable and easy-care material
- Mesh insert at side through to over the buttocks
- Narrow, flat waistband and leg edging



## SPORT PANTY



STYLE 1610 - A2  
79% PA, 21% EL

001

	Cup	D/EUR	GB	US	France	Italia
1610 A2		36 - 48	30 - 42	6 - 18	38 - 50	40 - 52

- Narrow, flat waistband and leg edging
- Mesh inserts on the sides ensure perfect breathability and add a sporty look
- Super soft jacquard fabric with an open, breathable structure



## PANALP™ WOOL



STYLE 1655 - A2  
56% WO, 32% PA,  
12% EL

472

	Cup	D/EUR	GB	US	France	Italia
1655 A2		36 - 48	30 - 42	6 - 18	38 - 50	40 - 52

- Outer fabric made of ultra-light mesh combined with soft and breathable merino wool
- Climate control: merino wool has a cooling effect in the summer and a warming effect in the winter
- Narrow, flat waistband and leg edging



6-7



## SPORT TIGHTS COMPRESSION



STYLE 1687 · A4  
72% PA, 28% EL



	Cup	D/EUR	GB	US	France	Italia
1687 A4		36 – 48	30 – 42	6 – 18	38 – 50	40 – 52

- Compressive textured fabric with 3D nubs
- Breathable, multiway-stretch material
- Soft, super comfortable waistband
- Small pocket included in the waistband
- High performance: Massaging and toning structure; power fabric with massage effect
- Perfect energy: Increased endurance and energy thanks to improved circulation
- Safety support: Reduced risk of injury due to compression during endurance sports
- Relaxed muscles: The muscles don't tire as quickly and need less time to regenerate

New Style spring/summer 2023



## SPORT TIGHTS MASSAGE



STYLE 1691 · A4  
71% PA, 29% EL



STYLE 1693 · A4  
71% PA, 29% EL

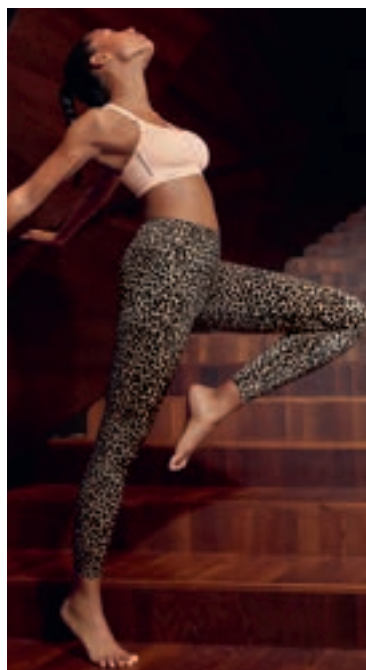


STYLE 1695 · A4  
71% PA, 29% EL



	Cup	D/EUR	GB	US	France	Italia
1691 A4		36 – 48	30 – 42	6 – 18	38 – 50	40 – 52
1693 A4		36 – 48	30 – 42	6 – 18	38 – 50	40 – 52
1695 A4		34 – 48	28 – 42	4 – 18	36 – 50	38 – 52

- High performance: Massaging and toning structure. Power fabric with massage effect
- Perfect energy: Increased endurance and energy thanks to improved circulation
- Safety support: Reduced risk of injury due to compression during endurance sports
- Relaxed muscles: The muscles don't tire as quickly and need less time to regenerate



## SPORT TIGHTS MASSAGE



STYLE 1696 · A4  
71% PA, 29% EL



	Cup	D/EUR	GB	US	France	Italia
1696 A4		36 – 48	30 – 42	6 – 18	38 – 50	40 – 52

- High performance: Massaging and toning structure. Power fabric with massage effect
- Perfect energy: Increased endurance and energy thanks to improved circulation
- Safety support: Reduced risk of injury due to compression during endurance sports
- Relaxed muscles: The muscles don't tire as quickly and need less time to regenerate





## SPORT TIGHTS MASSAGE

474

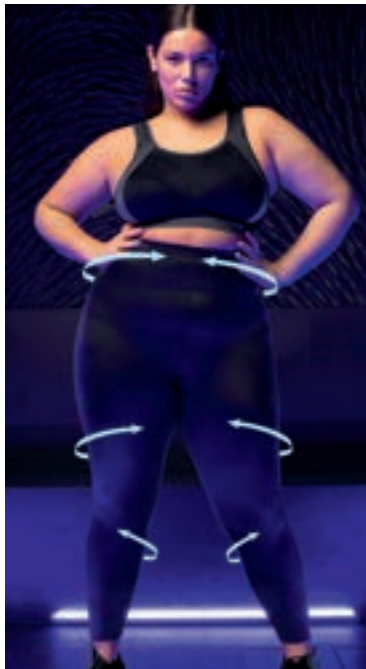


STYLE 1676 - A4  
79% PA, 21% EL



	Cup	D/EUR	GB	US	France	Italia
1676 A4		36 - 48	30 - 42	6 - 18	38 - 50	40 - 52

- Soft feel-good waistband
- High performance: Massaging and toning structure. Power fabric with massage effect
- Perfect energy: Increased endurance and energy thanks to improved circulation
- Safety support: Reduced risk of injury due to compression during endurance sports
- Relaxed muscles: The muscles don't tire as quickly and need less time to regenerate



## SPORT TIGHTS MASSAGE+

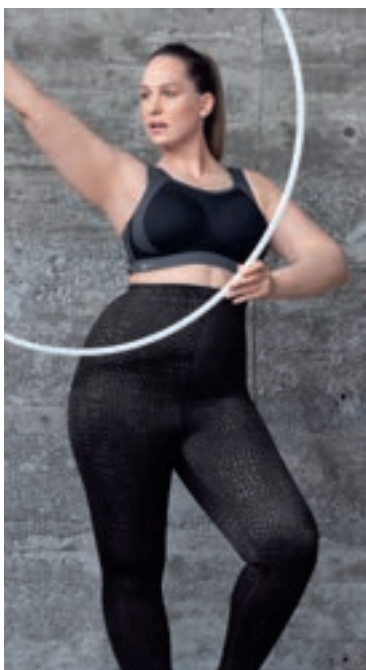
001



STYLE 1697 - A4  
71% PA, 29% EL

	Cup	D/EUR	GB	US	France	Italia
1697 A4		50 - 60	44 - 54	20 - 30	52 - 62	54 - 64

- High performance: Massaging and toning structure. Power fabric with massage effect
- Perfect energy: Increased endurance and energy thanks to improved circulation
- Safety support: Reduced risk of injury due to compression during endurance sports
- Relaxed muscles: The muscles don't tire as quickly and need less time to regenerate



## SPORT TIGHTS MASSAGE+

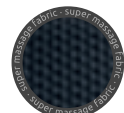
474



STYLE 1698 - A4  
71% PA, 29% EL

	Cup	D/EUR	GB	US	France	Italia
1698 A4		50 - 56	44 - 50	20 - 26	52 - 58	54 - 60

- Airy waistband
- High performance: Massaging and toning structure. Power fabric with massage effect
- Perfect energy: Increased endurance and energy thanks to improved circulation
- Safety support: Reduced risk of injury due to compression during endurance sports
- Relaxed muscles: The muscles don't tire as quickly and need less time to regenerate





Style 1888

Miss Fantastic relaxing tights

C3  
= firm support



black

- High Waist
- Length below the ankles

Size 36–52



Style 1676

sport tights massage

A4  
= maximum support



orinoco

- High Waist
- Length to the ankles

Size 36–48



Style 1687

sport tights compression

A4  
= maximum support



black

- Regular rise
- Length to the ankles

Size 36–48



Style 1695

sport tights massage

A4  
= maximum support



black

- Regular rise
- Length to the ankles

Size 34–48



Style 1696

sport tights massage

A4  
= maximum support



kalahari

- Regular rise
- Length to the ankles

Size 36–48



Style 1697

sport tights massage<sup>plus</sup>

A4  
= maximum support



black

- High Waist
- Length to the ankles

Size 50–60



Style 1698

sport tights massage<sup>plus</sup>

A4  
= maximum support



orinoco

- High Waist
- Length to the ankles

Size 50–56



Style 1693

sport tights massage

A4  
= maximum support



black

- Regular rise
- ¾ length/capri

Size 36–48



Style 1691

sport tights massage

A4  
= maximum support



black

- Regular rise
- short/cyclist

Size 36–48



**PanAlp Delta Top** STYLE 5562.001 + **sport tights compression** STYLE 1687.001



**ESSENTIALS** SINCE 1886



STYLE 5544.408 + 1342.001 + 408 + 753 + 769

# ESSENTIALS

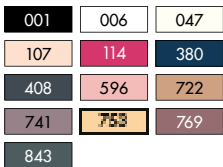
NEW COLOURS 1342 + 1343 047 champagne, 114 cherry red, 596 rosewood, 722 deep sand, 741 dusty rose, 843 jungle



STYLE 1342 · C1  
Hipster

D/EUR: S/M – L/XL  
INT: S/M – L/XL  
FR: S/M – L/XL

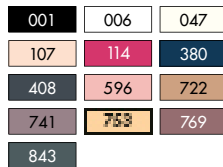
80% PA, 20% EL



STYLE 1343 · C1  
High-waist brief+

D/EUR: S/M – L/XL  
INT: S/M – L/XL  
FR: S/M – L/XL

80% PA, 20% EL



STYLE 1842 · C1  
Panty Long

D/EUR: S/M – L/XL  
INT: S/M – L/XL  
FR: S/M – L/XL

80% PA, 20% EL



C1 = light support · C2 = medium support · C3 = firm support

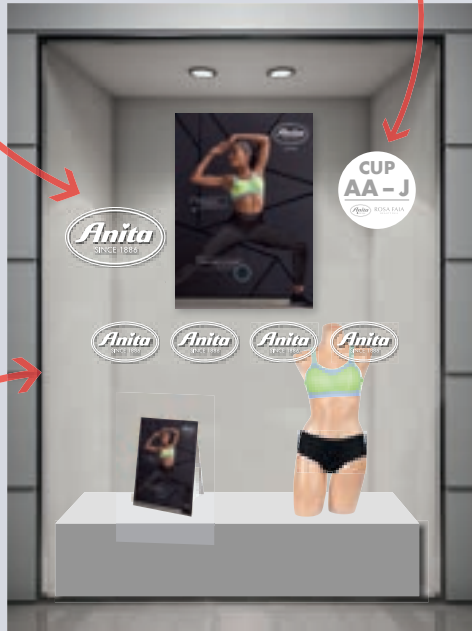
# Promotional support from Anita.

## Shop window decals

„Anita“ W111Y  
50 x 30 cm  
19.7 x 11.8 inch

## Shop window decals

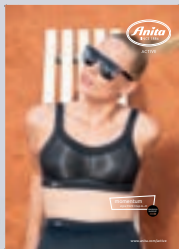
„Cup“ W110Y  
Ø 27 cm  
Ø 10.6 inch



## Banner window decals

„Anita“ W112Y  
100 x 14 cm  
39.4 x 5.5 inch

## Flip display



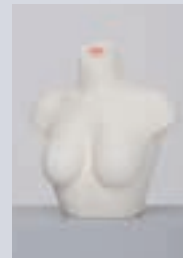
**V441Y**  
DIN A3  
29.7 x 42.0 cm  
5529.001 + 1695.001  
5544.408 + 1627.408  
5527.001 + 1685.001  
5566.107 + 1627.107  
5544.283 + 1696.284  
5529.006 + 1629.006  
5567.445 + 1697.001  
5537.445 + 1685.001  
5521.006 + 1695.001  
5523.001 + 1695.001

## Torso



**0117.752**  
Euro size: 75C/38  
GB/US size: 34C/32/8  
Dimensions:  
95 x 41 x 34 cm  
37 x 16 x 13 inch  
Material: glass fibre-reinforced plastic  
Weight: approx. 5 kg  
Colour: torso-sand

## Half torso



**0118.009**  
Euro size: 75C  
GB/US size: 34C/32/8  
Dimensions:  
46 x 56 x 17 cm  
18 x 22 x 7 inch  
Material: fibre-reinforced polyester  
Weight: approx. 2,5kg  
Colour: original

## Washbag



**G025**  
1 sales unit = 20 pcs.  
100% PES

## Paper carrier bags



**W119Y (Small)**  
22 x 27.5 cm  
9 x 11 inch  
1 sales unit = 25 pcs.



**W129Y (Big)**  
32 x 27.5 cm  
13 x 11 inch  
1 sales unit = 25 pcs.



ACTIVE

b2b.anita.com

