



CORAL FROSTED WALL LIGHT

Designed and Handmade by Oliver Höglund & Ryan Roberts

Molten hot glass shaped and hand-blown at one thousand degrees cel-sius. A flat disc shape made with quality Swedish clear glass.

The free formation design ensures that no two pieces are the same, giving you a truly aesthetic piece for your space.

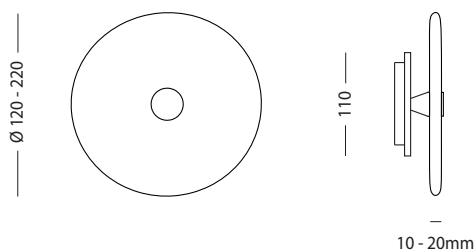
Hand Made in Currumbin, Australia.



TECHNICAL DATA

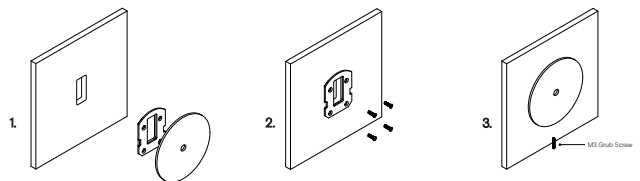
Application	Interior & Outdoor Use	Input Power	100-240V AC
Glass	Frosted	Output Power	4V DC Driver (350mA Constant Current) Supplied with Remote Driver
Cover Cap Finish	Matte Black / Matte White / Brass Finish / Steel Finish / Medium Bronze Powdercoat	Dedicated LED	1W - 350mA (Standard) / 2W (additional cost) Lifespan - 60,000+ Hours
Wall Mount Finish	Matte Black / Matte White / Brass Finish / Steel Finish / Medium Bronze Powdercoat	Colour Temperature	2700K / 3000K (Standard) / 4000K
Glass Dimensions	Small: 120 - 140mm Medium: 150 - 170mm Large: 200 - 220mm Wall Mount: 110 x 15mm Protrudes: 50mm	Dimming	Single-Use-1W LED Non-Dimmable (Standard) Optional: Single-use - 2W LED Triac Dimmable DALI (additional cost) Please contact for alternative dimming options
IP Rating	IP65	Mounting	Integral Wall Bracket
Warranty	24 Months / 2 Years	Certification	CE / AS/NZS - 60598.2.1

DIMENSIONS



MOUNTING

Installation Instructions



1. Prep the wall with an hole match the wall plate cutout. Secure the transformer into the wall cavity and feed the cable through the hole into the room. Connect the single electrified cable to the transformer.

2. Screw the mounting plate to the wall using appropriate fasteners for the wall substrate.

3. Fit the circular wall plate over the mounting plate and secure with the supplied M3 grub screw at the bottom of the plate.

*The transformer needs to be accessible for maintenance purposes.



FLO WALL LIGHT

Designed and Handmade by Oliver Höglund & Ryan Roberts

Molten hot glass shaped and hand-blown at one thousand degrees celsius. An organic shape made with quality Swedish clear glass to dress a defused pinapple LED bulb.

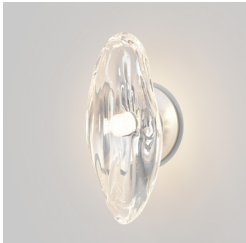
The defused LED bulb shines and refract off the contours of the FLO wall light to give a unique one of a kind lighting design.

Hand-Blown in Currumbin, Australia

GLASS FINISH



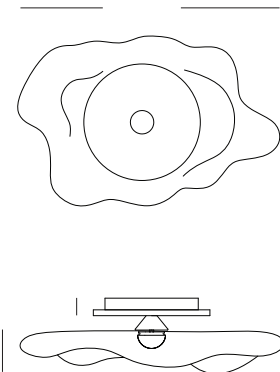
Clear



TECHNICAL DATA

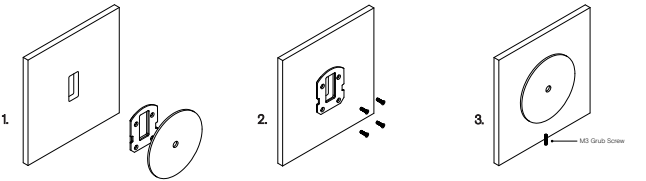
Application	Interior Use (Optional: Outdoor Use) Low Voltage (under 12v)	Input Power	100-240V AC
Glass	Clear	Output Power	4V DC Driver (350mA Constant Current) Supplied with Remote Driver
Wall Plate Finish	Matte Black / Matte White / Brass Finish / Steel Finish / Medium Bronze Powdercoat	Dedicated LED	1W - 350mA (Standard) / 2W (additional cost) Lifespan - 60,000+ Hours
Dimensions	Glass: Length 180 - 220mm / Width: 80 - 110mm Mounting Plate: 110 x 15mm Protrudes: 100 - 120mm	Lumen Output	150lm (1W) (Standard) / 300lm (2W)
Weight	0.5kg	Colour Temperature	2700K / 3000K (Standard) / 4000K
IP Rating	IP20 Indoor (Optional: IP55 Outdoor)	Dimming	Single-Use-1W LED Non-Dimmable (Standard) Optional Single-use - 1W LED Dimmable with DALI (additional cost) Please contact for alternative dimming options
Warranty	24 Months / 2 Years	Mounting	Integral Wall Bracket
Certification	CE / AS/NZS - 60598.2.1		

DIMENSIONS



MOUNTING

Installation Instructions



1. Prep the wall with an hole match the wall plate cutout. Secure the transformer into the wall cavity and feed the cable through the hole into the room. Connect the single electrified cable to the transformer.

2. Screw the mounting plate to the wall using appropriate fasteners for the wall substrate.

3. Fit the circular wall plate over the mounting plate and secure with the supplied M3 grub screw at the bottom of the plate.

*The transformer needs to be accessible for maintenance purposes.



SOL ROUND WALL LIGHT

Designed and Handmade by Oliver Höglund & Ryan Roberts

Molten hot glass shaped and hand-blown at one thousand degrees celsius. A flat disc shape made with quality Swedish clear glass to dress a defused pinapple LED bulb.

The defused LED bulb shines and refract off the contours of the SØL round wall light to give a unique one of a kind lighting design.

The free formation design ensures that no two pieces are the same, giving you a truly aesthetic piece for your space.

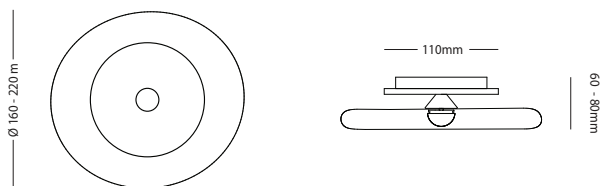
Hand-Blown in Currumbin, Australia.



TECHNICAL DATA

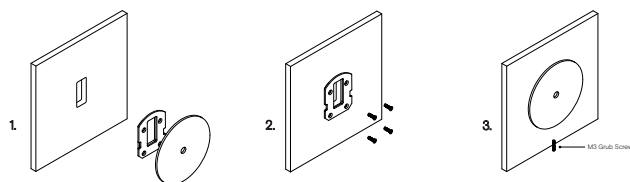
Application	Interior Use (Optional: Outdoor Use) Low Voltage (under 12v)	Input Power	100 - 240VAC
Glass Colour	Clear	Output Voltage	4V DC Driver (350mA constant current) Supplied with Remote Driver
Wall Plate Finish	Matte Black / Matte White / Brass Finish / Steel Finish / Medium Bronze Powdercoat	Dedicated LED	1W - 350mA (Standard) / 2W (additional cost) Lifespan - 60,000+ Hours
Dimensions	Glass: 160 - 220mm Wall Mount: 110 x 20mm Protrudes: 80mm	Lumen Output	150lm (1W) (Standard) / 300lm (2W)
Warranty	24 Months / 2 Years	Colour Temperature	2700K / 3000K (Standard) / 4000K
IP Rating	IP20 Indoor (Optional: IP55 Outdoor)	Dimming	Single-Use-1W LED Non-Dimmable (Standard) Optional Single-use - 1W LED Dimmable with DALI (additional cost) Please contact for alternative dimming options
Certification	CE / AS/NZS - 60598.2.1	Mounting	Integral Wall Bracket

DIMENSIONS



MOUNTING

Installation Instructions



1. Prep the wall with an hole match the wall plate cutout. Secure the transformer into the wall cavity and feed the cable through the hole into the room. Connect the single electrified cable to the transformer.

2. Screw the mounting plate to the wall using appropriate fasteners for the wall substrate.

3. Fit the circular wall plate over the mounting plate and secure with the supplied M3 grub screw at the bottom of the plate.

*The transformer needs to be accessible for maintenance purposes.



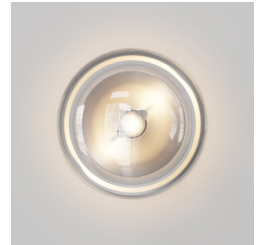
SONN WALL LIGHT

Designed and Handmade by Oliver Höglund & Ryan Roberts

Molten hot glass shaped and hand-blown at one thousand degrees-celsius. Tiny air bubbles cased with quality clear glass produce a truly unique shadow effect. Made with quality Swedish glass.

The free formation design ensures that no two pieces are the same, giving you a truly aesthetic piece for your space.

Hand-Blown in Currumbin, Australia



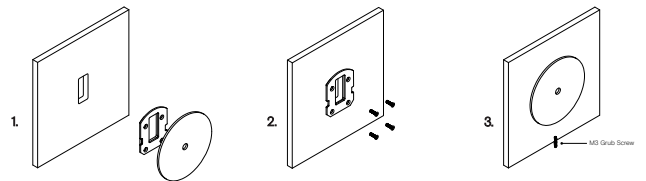
TECHNICAL DATA

Application	Interior Use (Optional: Outdoor Use) Low Voltage (under 12v)	Input Power	100-240V AC
Glass	Clear	Output Power	4V DC Driver (350mA Constant Current) Supplied with Remote Driver
Wall Plate Finish	Matte Black / Matte White / Brass Finish / Steel Finish / Medium Bronze Powdercoat	Dedicated LED	1W - 350mA (Standard) / 2W (additional cost) Lifespan - 60,000+ Hours
Dimensions	Glass: 110 x 110mm Mounting Plate: 110 x 15mm Protudes: 125mm	Lumen Output	150lm (1W) (Standard) / 300lm (2W)
Weight	0.5kg	Colour Temperature	2700K / 3000K (Standard) / 4000K
IP Rating	IP20 Indoor (Optional: IP55 Outdoor)	Dimming	Single-Use-1W LED Non-Dimmable (Standard) Optional Single-use - 1W LED Dimmable with DALI (additional cost) Please contact for alternative dimming options
Warranty	24 Months / 2 Years	Mounting	Integral Wall Bracket
Certification	CE / AS/NZS - 60598.2.1		

DIMENSIONS

MOUNTING

Installation Instructions



1. Prep the wall with an hole match the wall plate cutout. Secure the transformer into the wall cavity and feed the cable through the hole into the room. Connect the single electrified cable to the transformer.

2. Screw the mounting plate to the wall using appropriate fasteners for the wall substrate.

3. Fit the circular wall plate over the mounting plate and secure with the supplied M3 grub screw at the bottom of the plate.

*The transformer needs to be accessible for maintenance purposes.



CORAL TABLE LIGHT

Designed and Handmade by Oliver Höglund & Ryan Roberts

Molten hot glass shaped and hand-blown at one thousand degrees cel-sius. Two flat disc shape made with quality Swedish clear glass.

The free formation design ensures that no two pieces are the same, giving you a truly aesthetic piece for your space.

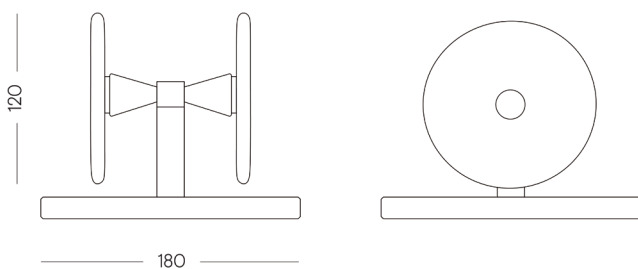
Hand Made in Currumbin, Australia.



TECHNICAL DATA

Application	Interior Use	Input Power	220-240V ---50/60HZ, 0.8Amax
Glass	Frosted	Output Power	24.0V----1.0A/24W
Lamp Rod Finish	Natural Brass / Matte White / Matte Black / Steel Finish / Medium Bronze Powdercoat	Dedicated LED (x2)	1W - 350mA (Standard) / 2W (additional cost) Lifespan - 60,000+ Hours
Lamp Base Finish	Travertine	Colour Temperature	2700K / 3000K (Standard) / 4000K
Glass Dimensions	2 x 120mm	Cord	White with in-line switch and AS/NZS Plug
Lamp Base	180 x 15mm	Overall Cord Length	2500mm
Overall Height	150mm	Certification	AS/NZS - 60598.2.1
Warranty	24 Months / 2 Years	IP Rating	IP20 Indoor

DIMENSIONS





CORAL STONE FROSTED WALL LIGHT

Designed and Handmade by Oliver Höglund & Ryan Roberts

Molten hot glass shaped and hand-blown at one thousand degrees cel-sius. A flat disc shape made with quality Swedish clear glass.

The free formation design ensures that no two pieces are the same, giving you a truly aesthetic piece for your space.

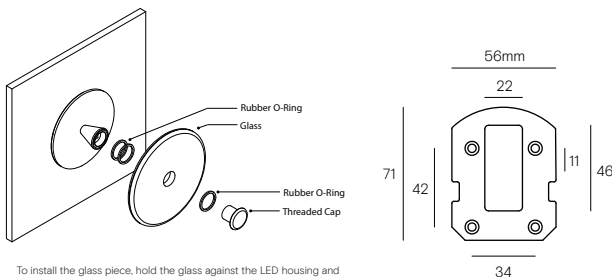
Hand Made in Currumbin, Australia.



TECHNICAL DATA

Application	Interior & Outdoor Use	Input Power	100-240V AC
Glass	Frosted	Output Power	4V DC Driver (350mA Constant Current) Supplied with Remote Driver
Cover Cap Finish	Matte Black / Matte White / Brass Finish / Steel Finish / Medium Bronze Powdercoat	Dedicated LED	1W - 350mA (Standard) / 2W (additional cost) Lifespan - 60,000+ Hours
Wall Mount Finish	Laminam Calce - Bianco	Colour Temperature	2700K / 3000K (Standard) / 4000K
Glass Dimensions	140mm Glass Thickness: 10-20mm	Dimming	Single-Use-1W LED Non-Dimmable (Standard) Optional Single-use - 1W LED Dimmable with DALI (additional cost) Please contact for alternative dimming options
Wall Mount:	180 x 20mm Protrudes: 50mm	Mounting	Integral Wall Bracket
IP Rating	IP65 Outdoor	Certification	CE / AS/NZS - 60598.2.1
Warranty	24 Months / 2 Years		

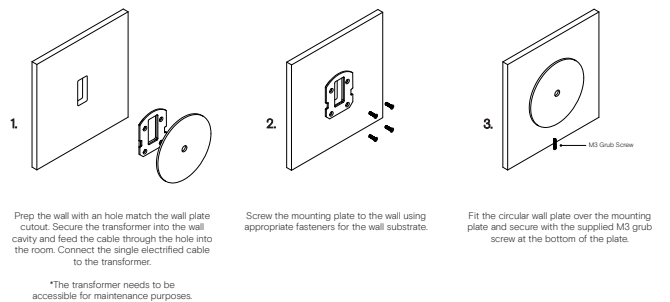
GLASS INSTALLATION



To install the glass piece, hold the glass against the LED housing and thread the 30mm threaded cap into the LED housing.
*Ensure the rubber o-rings are installed in the correct position, 1 behind the glass, and 1 in-front on the glass. If the glass is not held firmly when the threaded cap is fully screwed in, install an extra o-ring.

MOUNTING

Installation Instructions





CORAL STONE CLEAR WALL LIGHT

Designed and Handmade by Oliver Höglund & Ryan Roberts

Molten hot glass shaped and hand-blown at one thousand degrees cel-sius. A flat disc shape made with quality Swedish clear glass.

The free formation design ensures that no two pieces are the same, giving you a truly aesthetic piece for your space.

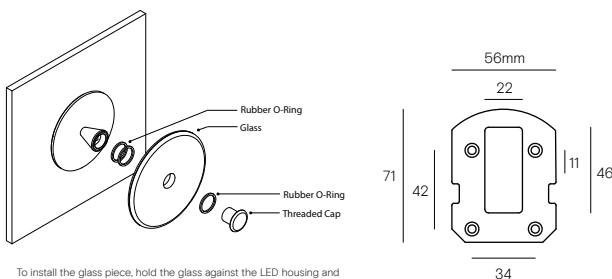
Hand Made in Currumbin, Australia.



TECHNICAL DATA

Application	Interior & Outdoor Use	Input Power	100-240V AC
Glass	Clear	Output Power	4V DC Driver (350mA Constant Current) Supplied with Remote Driver
Cover Cap Finish	Matte Black / Matte White / Brass Finish / Steel Finish / Medium Bronze Powdercoat	Dedicated LED	1W - 350mA (Standard) / 2W (additional cost) Lifespan - 60,000+ Hours
Wall Mount Finish	Laminam Calce - Bianco	Colour Temperature	2700K / 3000K (Standard) / 4000K
Glass Dimensions	140mm Glass Thickness: 10-20mm	Dimming	Single-Use-1W LED Non-Dimmable (Standard) Optional Single-use - 1W LED Dimmable with DALI (additional cost) Please contact for alternative dimming options
Wall Mount:	180 x 20mm Protrudes: 50mm	Mounting	Integral Wall Bracket
IP Rating	IP65 Outdoor	Certification	CE / AS/NZS - 60598.2.1
Warranty	24 Months / 2 Years		

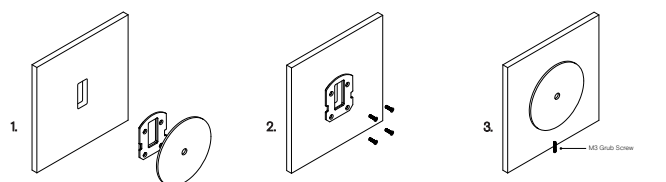
GLASS INSTALLATION



To install the glass piece, hold the glass against the LED housing and thread the 30mm threaded cap into the LED housing.
*Ensure the rubber o-rings are installed in the correct position, 1 behind the glass, and 1 in-front on the glass. If the glass is not held firmly when the threaded cap is fully screwed in, install an extra o-ring.

MOUNTING

Installation Instructions



1. Prep the wall with an hole match the wall plate cutout. Secure the transformer into the wall cavity and feed the cable through the hole into the room. Connect the single electrified cable to the transformer.

2. Screw the mounting plate to the wall using appropriate fasteners for the wall substrate.

3. Fit the circular wall plate over the mounting plate and secure with the supplied M3 grub screw at the bottom of the plate.

*The transformer needs to be accessible for maintenance purposes.



CORAL

FROSTED LINEAR ROD PENDANT (x7)

Designed and Handmade by Oliver Höglund & Ryan Roberts

Molten hot glass shaped and hand-blown at one thousand degrees cel-sius. Six flat disc shape made with quality Swedish clear glass.

The free formation design ensures that no two pieces are the same, giving you a truly aesthetic piece for your space.

Hand Made in Currumbin, Australia.



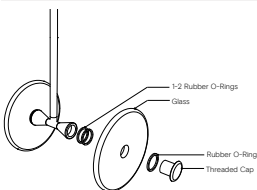
TECHNICAL DATA

Application	Interior Use Only	Input Power	100 - 240VAC
Glass Colour	Frosted	Output Voltage (Standard)	17-19V DC Driver (350mA Constant Current) Supplied with Remote Driver
Rod Suspensions	Natural Brass / Matte Black / Matte White / Steel Finish / Medium Bronze Powdercoat	Dedicated LED	7 x 1W - 350mA (Standard) 7 x 2W - 350mA (additional cost) Lifespan - 60,000+ Hours
Ceiling Canopy	Natural Brass / Matte Black / Matte White / Steel Finish / Medium Bronze Powdercoat	Colour Temperature	2700K / 3000K (Standard) / 4000K
Dimensions	Glass Diameter: 160mm Linear Rod: 1500mm	Dimming	Yes - Dimmable TRIAC/Phase (Standard) Dimmable DALI (additional cost) Please contact for alternative dimming
Measurement between vertical rods - 750mm		Warranty	24 Months / 2 Years
		Certification	CE / AS/NZS - 60598.2.1

DIMENSIONS

MOUNTING

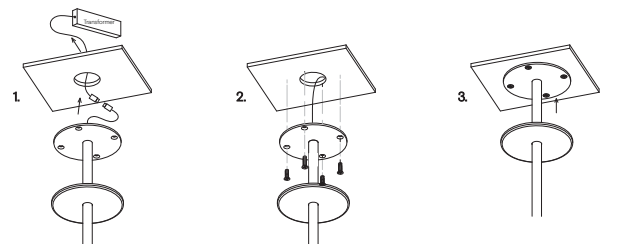
Glass Installation



To install the glass piece, hold the glass against the LED housing and thread the 30mm threaded cap into the LED housing.

*Ensure the rubber o-rings are installed in the correct position, 1 behind the glass, and 1 in-front on the glass. If the glass is not held firmly when the threaded cap is fully screwed in, install an extra o-ring.

Installation Instructions



Prep the ceiling with an approx. 50mm hole to fit the transformer. Place the transformer in the ceiling and feed the cable through the hole into the room. Connect the single electrified cable to the transformer.

*The transformer needs to be accessible for maintenance purposes.

Screw the steel mounting plate to the ceiling using appropriate fasteners for the ceiling substrate.

Secure the magnetic cover plate onto the mounting plate.



CORAL

CLEAR LINEAR ROD PENDANT (x7)

Designed and Handmade by Oliver Höglund & Ryan Roberts

Molten hot glass shaped and hand-blown at one thousand degrees cel-sius. Six flat disc shape made with quality Swedish clear glass.

The free formation design ensures that no two pieces are the same, giving you a truly aesthetic piece for your space.

Hand Made in Currumbin, Australia.



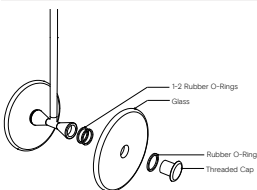
TECHNICAL DATA

Application	Interior Use Only	Input Power	100 - 240VAC
Glass Colour	Clear	Output Voltage (Standard)	17-19V DC Driver (350mA Constant Current) Supplied with Remote Driver
Rod Suspensions	Natural Brass / Matte Black / Matte White / Steel Finish / Medium Bronze Powdercoat	Dedicated LED	7 x 1W - 350mA (Standard) 7 x 2W - 350mA (additional cost) Lifespan - 60,000+ Hours
Ceiling Canopy	Natural Brass / Matte Black / Matte White / Steel Finish / Medium Bronze Powdercoat	Colour Temperature	2700K / 3000K (Standard) / 4000K
Dimensions	Glass Diameter: 160mm Linear Rod: 1500mm	Dimming	Yes - Dimmable TRIAC/Phase (Standard) Dimmable DALI (additional cost) Please contact for alternative dimming
Measurement between vertical rods - 750mm		Warranty	24 Months / 2 Years
		Certification	CE / AS/NZS - 60598.2.1

DIMENSIONS

MOUNTING

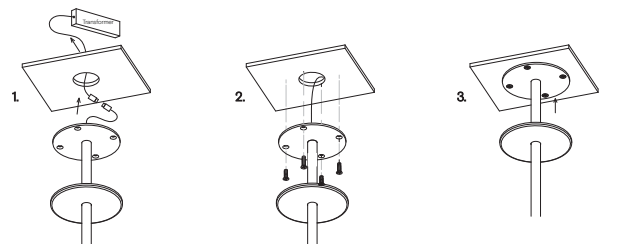
Glass Installation



To install the glass piece, hold the glass against the LED housing and thread the 30mm threaded cap into the LED housing.

*Ensure the rubber o-rings are installed in the correct position, 1 behind the glass, and 1 in-front on the glass. If the glass is not held firmly when the threaded cap is fully screwed in, install an extra o-ring.

Installation Instructions



Prep the ceiling with an approx. 50mm hole to fit the transformer. Place the transformer in the ceiling and feed the cable through the hole into the room. Connect the single electrified cable to the transformer.

*The transformer needs to be accessible for maintenance purposes.

Screw the steel mounting plate to the ceiling using appropriate fasteners for the ceiling substrate.

Secure the magnetic cover plate onto the mounting plate.



CORAL TRAVERTINE FROSTED WALL LIGHT

Designed and Handmade by Oliver Höglund & Ryan Roberts

Molten hot glass shaped and hand-blown at one thousand degrees cel-sius. A flat disc shape made with quality Swedish clear glass.

The free formation design ensures that no two pieces are the same, giving you a truly aesthetic piece for your space.

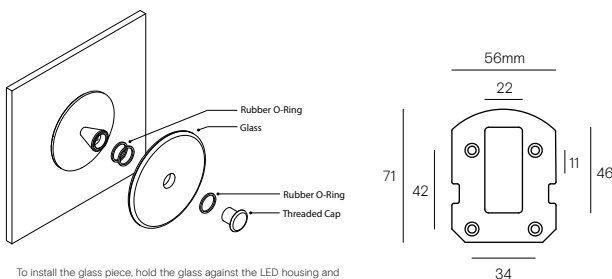
Hand Made in Currumbin, Australia.



TECHNICAL DATA

Application	Interior & Outdoor Use	Input Power	100-240V AC
Glass	Frosted	Output Power	4V DC Driver (350mA Constant Current) Supplied with Remote Driver
Cover Cap Finish	Matte Black / Matte White / Brass Finish / Steel Finish / Medium Bronze Powdercoat	Dedicated LED	1W - 350mA (Standard) / 2W (additional cost) Lifespan - 60,000+ Hours
Wall Mount Finish	Travertine	Colour Temperature	2700K / 3000K (Standard) / 4000K
Glass Dimensions	140mm Glass Thickness: 10-20mm	Dimming	Single-Use-1W LED Non-Dimmable (Standard) Optional Single-use - 1W LED Dimmable with DALI (additional cost) Please contact for alternative dimming options
Wall Mount:	180 x 20mm Protrudes: 50mm	Mounting	Integral Wall Bracket
IP Rating	IP65 Outdoor	Certification	CE / AS/NZS - 60598.2.1
Warranty	24 Months / 2 Years		

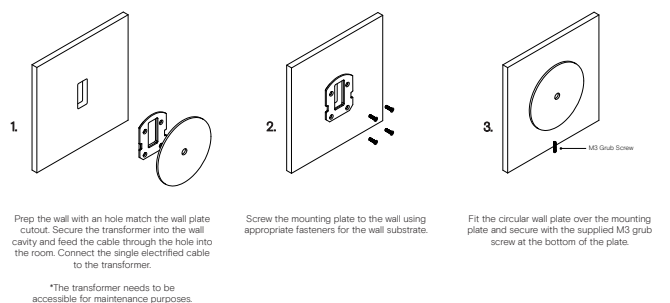
GLASS INSTALLATION



To install the glass piece, hold the glass against the LED housing and thread the 30mm threaded cap into the LED housing.
*Ensure the rubber o-rings are installed in the correct position, 1 behind the glass, and 1 in-front on the glass. If the glass is not held firmly when the threaded cap is fully screwed in, install an extra o-ring.

MOUNTING

Installation Instructions





ØST PENDANT

Designed and Handmade by Oliver Höglund & Ryan Roberts

Molten hot glass shaped and mouth-blown at one thousand degrees celsius. An organic teardrop shape made with quality Swedish glass.

The free formation design ensures that no two pieces are the same, giving you a truly aesthetic piece for your space.

Hand-Blown in Currumbin, Australia.

GLASS FINISH



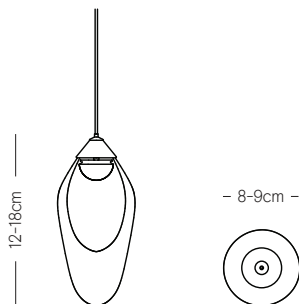
Clear



TECHNICAL DATA

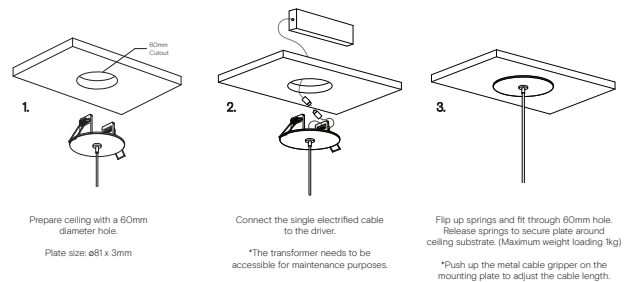
Application	Interior Use Only Low Voltage (under 12v)	Input Power	100-240VAC
Glass Colour	Clear	Output Power	4V DC Driver (350mA Constant Current) Supplied with Remote Driver
Lampholder Finish	Matte Black / Brass Finish / Steel Finish White / Medium Bronze Powdercoat	LED Wattage	1W - 350mA (Standard) / 2W (additional cost) Lifespan - 60,000+ Hours
Ceiling Mount	Matte Black / Matte White	Lumen Output	150lm (1W) (Standard) / 300lm (2W)
Dimensions	Height: 120-180mm Width: 80-90mm	Colour Temperature	2700K / 3000K (Standard) / 4000K
Cord	Steel / Black / White Cable 1500mm (Standard) Longer lengths on request	Dimming	Single-Use-1W LED Non-Dimmable (Standard) Optional Single-use - 1W LED Dimmable with DALI (additional cost) Please contact for alternative dimming options
Weight	0.6 - 0.8kg	Mounting	81mm Flat disc recessed ceiling plate Custom designed ceiling plate on request
Warranty	24 Months / 2 Years		
Certification	CE / AS/NZS - 60598.2.1		

DIMENSIONS



MOUNTING

Installation Instructions





CORAL

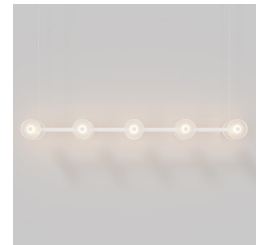
LINEAR BAR (FROSTED) PENDANT

Designed and Handmade by Oliver Höglund & Ryan Roberts

Molten hot glass shaped and hand-blown at one thousand degrees cel-sius. Ten flat disc shape made with quality Swedish clear glass.

The free formation design ensures that no two pieces are the same, giving you a truly aesthetic piece for your space.

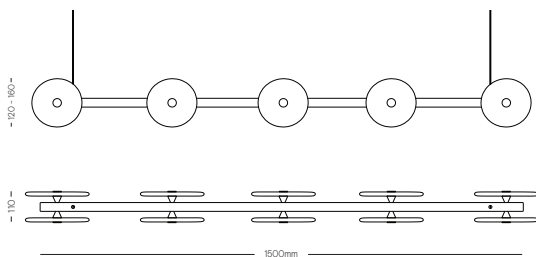
Hand Made in Currumbin, Australia.



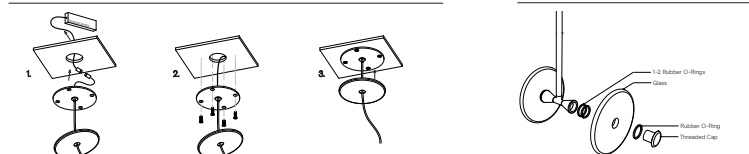
TECHNICAL DATA

Application	Interior Use Only	Input Power	100 - 240VAC
Glass Colour	Frosted	Output Power Standard	17 - 29V DC (350mA Constant Current) Supplied with Remote Driver
Linear Bar Finish	Matte Black / Matte White / Steel Finish / Brass Finish / Medium Bronze Powdercoat	Dedicated LED	10 x 1W - 350mA (Standard) 10 x 2W - 350mA (additional cost) Lifespan - 60,000+ Hours
Ceiling Mount	Matte White / Matte Black	Colour Temperature	2700K / 3000K (standard) / 4000K
Suspension	Steel Cable / Black Cable / White Cable	Dimming	Yes - TRIAC / Phase Dimming (Standard) DALI Dimmable (additional cost)
Suspension Length	1500mm	Weight	6.0kg
Dimensions	Coral Glass (x10) Width: 120 - 160mm Linear Bar Length: 1500mm Total width - 110mm - 120mm	Warranty	24 Months / 2 Years
Measurement between ceiling mounts - 1330mm		Certification	CE / AS/NZS - 60598.2.1

DIMENSIONS



MOUNTING

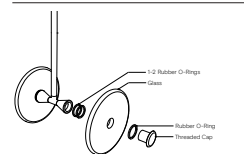
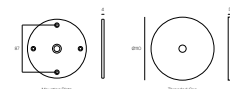


Prep the ceiling with an approx. 50mm hole to fit the transformer. Place the transformer in the ceiling and feed the cable through the hole into the room. Connect the single shielded cable to the transformer.
*The transformer needs to be accessible for maintenance purposes.

Screw the steel mounting plate to the ceiling using appropriate fasteners for the ceiling substrate.

Secure the magnetic cover plate onto the mounting plate.
*Push up the metal cable gripper on the mounting plate to adjust the cable length.

Dimensions



To install the glass piece, hold the glass against the LED housing and thread the 30mm threaded cap into the LED housing.
*Ensure the rubber o-rings are installed in the correct position, 1 behind the glass, and 1 in-front on the glass. If the glass is not held firmly when the threaded cap is fully screwed in, install an extra o-ring.



CORAL

RING PENDANT (20 PIECES)

Designed and Handmade by Oliver Höglund & Ryan Roberts

Molten hot glass shaped and hand-blown at one thousand degrees cel-sius. Ten flat disc shape made with quality Swedish clear glass.

The free formation design ensures that no two pieces are the same, giving you a truly aesthetic piece for your space.

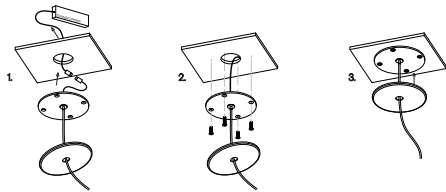
Hand Made in Currumbin, Australia.



TECHNICAL DATA

Application	Interior Use Only	Input Power	100 - 240VAC
Glass Colour	Frosted / Clear	Output Power Standard	17 - 29V DC (350mA Constant Current) Supplied with Remote Driver
Round Bar Finish	Brass / Finish / Matte Black / Matte White / Medium Bronze Powdercoat	Dedicated LED	10 x 1W 350mA (Standard) 10 x 2W 350mA (additional cost) Lifespan - 60,000+ Hours
Ceiling Mount	Matte White / Matte Black	Colour Temperature	2700K / 3000K (standard) / 4000K
Suspension	Steel Cable / Black Cable / White Cable	Dimming	Yes - TRIAC / Phase Dimming (Standard) Dimmable DALI (additional cost)
Suspension Length	1500mm (Or custom length)	Warranty	24 Months / 2 Years
Glass Dimensions	Coral Glass (x10) Width: 200 - 220mm	Certification	CE / AS/NZS - 60598.2.1
Ring Diameter	800mm	Weight	10kg

MOUNTING

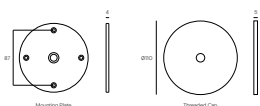


1 Prep the ceiling with an approx. 50mm hole to fit the transformer. Place the transformer in the ceiling and feed the cable through the hole into the room. Connect the single electrified cable to the transformer.
*The transformer needs to be accessible for maintenance purposes.

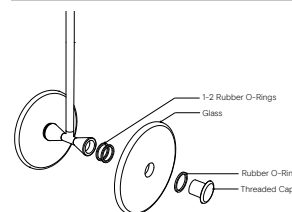
2 Screw the steel mounting plate to the ceiling using appropriate fasteners for the ceiling substrate.

3 Secure the magnetic cover plate onto the mounting plate.
*Push up the metal cable gripper on the mounting plate to adjust the cable length.

Dimensions



Glass Installation



To install the glass piece, hold the glass against the LED housing and thread the 30mm threaded cap into the LED housing.

*Ensure the rubber o-rings are installed in the correct position, 1 behind the glass, and 1 in-front on the glass. If the glass is not held firmly when the threaded cap is fully screwed in, install an extra o-ring.



CORAL

RING PENDANT (MEDIUM)

Designed and Handmade by Oliver Höglund & Ryan Roberts

Molten hot glass shaped and hand-blown at one thousand degrees cel-sius. Ten flat disc shape made with quality Swedish clear glass.

The free formation design ensures that no two pieces are the same, giving you a truly aesthetic piece for your space.

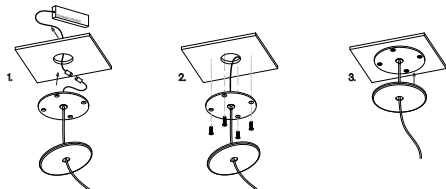
Hand Made in Currumbin, Australia.



TECHNICAL DATA

Application	Interior Use Only	Input Power	100 - 240VAC
Glass Colour	Frosted / Clear	Output Power Standard	17 - 29V DC (350mA Constant Current) Supplied with Remote Driver
Round Bar Finish	Brass Finish / Matte Black / Matte White / Medium Bronze Powdercoat	Dedicated LED	10 x 1W 350mA (Standard) 10 x 2W 350mA (additional cost) Lifespan - 60,000+ Hours
Cover Cap Finish:	Brass Finish / Matte Black / Matte White / Steel Finish / Medium Bronze Powdercoat	Colour Temperature	2700K / 3000K (standard) / 4000K
Ceiling Mount	Matte White / Matte Black	Dimming	Yes - TRIAC / Phase Dimming (Standard) Dimmable DALI (additional cost)
Suspension	White Cable / Steel Cable / Black Cable	Warranty	24 Months / 2 Years
Suspension Length	1500mm (Or custom length)	Certification	CE / AS/NZS - 60598.2.1
Glass Dimensions	Coral Glass (x10) Width: 150 - 170mm	Weight	8kg
Ring Diameter	800mm		

MOUNTING

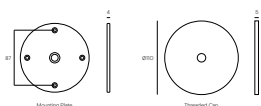


1 Prep the ceiling with an approx. 50mm hole to fit the transformer. Place the transformer in the ceiling and feed the cable through the hole into the room. Connect the single electrified cable to the transformer.
*The transformer needs to be accessible for maintenance purposes.

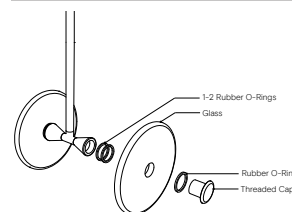
2 Screw the steel mounting plate to the ceiling using appropriate fasteners for the ceiling substrate.

3 Secure the magnetic cover plate onto the mounting plate.
*Push up the metal cable gripper on the mounting plate to adjust the cable length.

Dimensions



Glass Installation



To install the glass piece, hold the glass against the LED housing and thread the 30mm threaded cap into the LED housing.

*Ensure the rubber o-rings are installed in the correct position, 1 behind the glass, and 1 in-front on the glass. If the glass is not held firmly when the threaded cap is fully screwed in, install an extra o-ring.



CORAL

LINEAR BAR (CLEAR) PENDANT

Designed and Handmade by Oliver Höglund & Ryan Roberts

Molten hot glass shaped and hand-blown at one thousand degrees cel-sius. Ten flat disc shape made with quality Swedish clear glass.

The free formation design ensures that no two pieces are the same, giving you a truly aesthetic piece for your space.

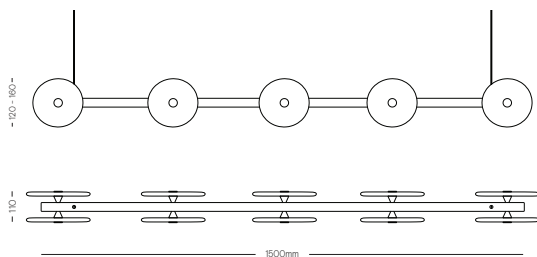
Hand Made in Currumbin, Australia.



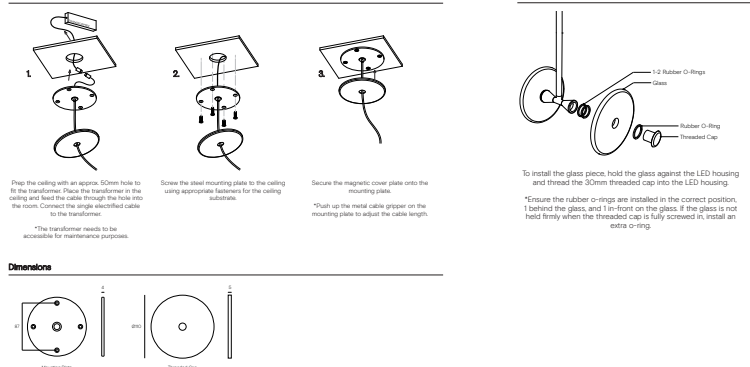
TECHNICAL DATA

Application	Interior Use Only	Input Power	100 - 240VAC
Glass Colour	Clear	Output Power Standard	17 - 29V DC (350mA Constant Current) Supplied with Remote Driver
Linear Bar Finish	Matte Black / Matte White / Steel Finish / Brass Finish / Medium Bronze Powdercoat	Dedicated LED	10 x 1W - 350mA (Standard) 10 x 2W - 350mA (additional cost) Lifespan - 60,000+ Hours
Ceiling Mount	Matte White / Matte Black	Colour Temperature	2700K / 3000K (standard) / 4000K
Suspension	Steel Cable / Black Cable / White Cable	Dimming	Yes - TRIAC / Phase Dimming (Standard) DALI Dimmable (additional cost)
Suspension Length	1500mm	Weight	6.0kg
Dimensions	Coral Glass (x10) Width: 120 - 160mm Linear Bar Length: 1500mm Total width - 110mm - 120mm	Warranty	24 Months / 2 Years
Measurement between ceiling mounts - 1330mm		Certification	CE / AS/NZS - 60598.2.1

DIMENSIONS



MOUNTING





CORAL DOME

FROSTED WALL LIGHT

Designed and Handmade by Oliver Höglund & Ryan Roberts

Molten hot glass shaped and hand-blown at one thousand degrees cel-sius. A flat disc shape made with quality Swedish clear glass.

The free formation design ensures that no two pieces are the same, giving you a truly aesthetic piece for your space.

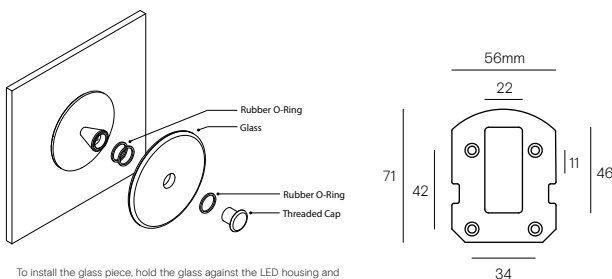
Hand Made in Currumbin, Australia.



TECHNICAL DATA

Application	Interior & Outdoor Use	Input Power	100-240V AC
Glass	Frosted	Output Power	4V DC Driver (350mA Constant Current) Supplied with Remote Driver
Steel Dome Finish	Matt White / Matte White / Medium Bronze	Dedicated LED	1W - 350mA (Standard) / 2W (additional cost) Lifespan - 60,000+ Hours
Glass Dimensions	160mm Glass Thickness: 10-20mm	Colour Temperature	2700K / 3000K (Standard) / 4000K
Wall Mount (Dome):	260mm Protrudes: 50mm	Dimming	Single-Use-1W LED Non-Dimmable (Standard) Optional Single-use - 1W LED Dimmable with DALI (additional cost) Please contact for alternative dimming options
IP Rating	IP65 Outdoor	Mounting	Integral Wall Bracket
Warranty	24 Months / 2 Years	Certification	CE / AS/NZS - 60598.2.1

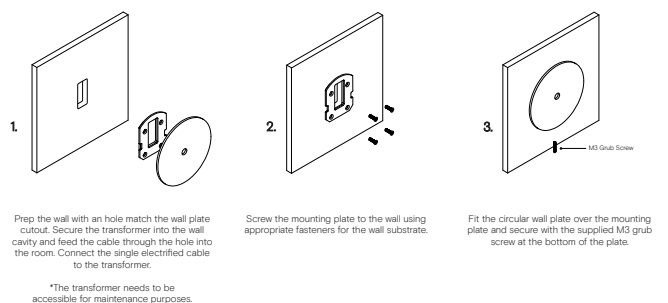
GLASS INSTALLATION



To install the glass piece, hold the glass against the LED housing and thread the 30mm threaded cap into the LED housing.
*Ensure the rubber o-rings are installed in the correct position, 1 behind the glass, and 1 in-front on the glass. If the glass is not held firmly when the threaded cap is fully screwed in, install an extra o-ring.

MOUNTING

Installation Instructions





CORAL DUO DOME PENDANT

Designed and Handmade by Oliver Höglund & Ryan Roberts

Molten hot glass shaped and hand-blown at one thousand degrees cel-sius. A flat disc shape made with quality Swedish clear glass.

The free formation design ensures that no two pieces are the same, giving you a truly aesthetic piece for your space.

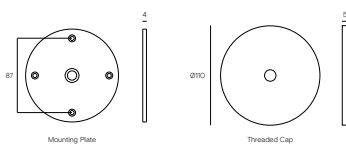
Hand Made in Currumbin, Australia.



TECHNICAL DATA

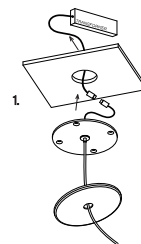
Application	Interior Use Only Low Voltage (under 12v)	Input Power	100 - 240V AC
Glass Colour	Frosted	Output Voltage	4V DC Driver (350mA Constant Current) Supplied with Remote Driver
Steel Dome Finish	Matte White / Matte Black / Medium Bronze	Dedicated LED	2W - 350mA (Standard) Lifespan - 60,000+ Hours
Ceiling Mount	Matte White / Matte Black	Colour Temperature	2700K / 3000K (Standard) / 4000K
Glass Dimensions	160 - 180mm (approx.)	Dimming	2W LED - Triac-Dimmable (Standard) DALI (additional cost) Please contact for other dimming options
Dome Dimensions	450mm external / 260mm internal	Mounting	110mm Flat disc recessed ceiling plate Custom designed ceiling plate on request
Suspension	1500mm White Cable / Steel Cable / Black Cable Longer lengths on request		
Weight	1.5kg		
Warranty	24 Months / 2 Years		
Certification	CE / AS/NZS - 60598.2.1		

Dimensions

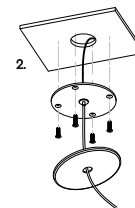


MOUNTING

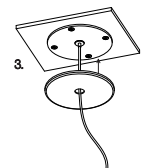
Installation Instructions



1. Prep the ceiling with an approx. 50mm hole to fit the transformer. Place the transformer in the ceiling and feed the cable through the hole into the room. Connect the single electrified cable to the transformer.



2. Screw the steel mounting plate to the ceiling using appropriate fasteners for the ceiling substrate.



3. Secure the magnetic cover plate onto the mounting plate.

*Push up the metal cable gripper on the mounting plate to adjust the cable length.



CORAL DOME PENDANT

Designed and Handmade by Oliver Höglund & Ryan Roberts

Molten hot glass shaped and hand-blown at one thousand degrees cel-sius. A flat disc shape made with quality Swedish clear glass.

The free formation design ensures that no two pieces are the same, giving you a truly aesthetic piece for your space.

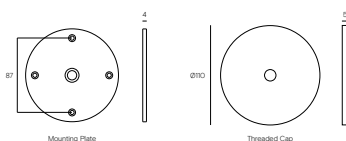
Hand Made in Currumbin, Australia.



TECHNICAL DATA

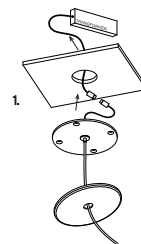
Application	Interior Use Only Low Voltage (under 12v)	Input Power	100 - 240V AC
Glass Colour	Frosted	Output Voltage	4V DC Driver (350mA Constant Current) Supplied with Remote Driver
Steel Dome Finish	Matte White / Matte Black / Medium Bronze	Dedicated LED	2W - 350mA (Standard) Lifespan - 60,000+ Hours
Ceiling Mount	Matte White / Matte Black	Colour Temperature	2700K / 3000K (Standard) / 4000K
Glass Dimensions	160 - 180mm (approx.)	Dimming	2W LED - Triac-Dimmable (Standard) DALI (additional cost) Please contact for other dimming options
Dome Dimensions	260mm width	Mounting	110mm Flat disc recessed ceiling plate Custom designed ceiling plate on request
Suspension	1500mm White Cable / Black Cable Longer lengths on request		
Weight	0.5kg		
Warranty	24 Months / 2 Years		
Certification	CE / AS/NZS - 60598.2.1		

Dimensions

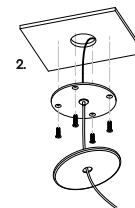


MOUNTING

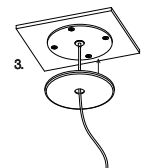
Installation Instructions



1. Prep the ceiling with an approx. 50mm hole to fit the transformer. Place the transformer in the ceiling and feed the cable through the hole into the room. Connect the single electrified cable to the transformer.



2. Screw the steel mounting plate to the ceiling using appropriate fasteners for the ceiling substrate.



3. Secure the magnetic cover plate onto the mounting plate.

*Push up the metal cable gripper on the mounting plate to adjust the cable length.



CORAL DUO PENDANT

Designed and Handmade by Oliver Höglund & Ryan Roberts

Molten hot glass shaped and hand-blown at one thousand degrees cel-sius. Two flat disc shape made with quality Swedish clear glass.

The free formation design ensures that no two pieces are the same, giving you a truly aesthetic piece for your space.

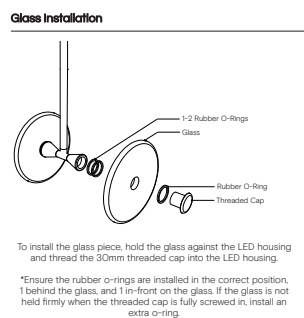
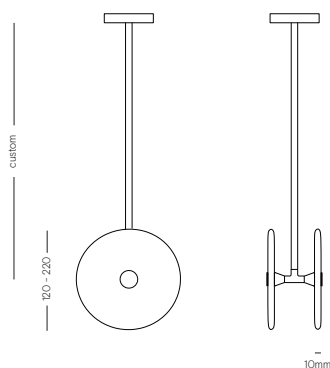
Hand Made in Currumbin, Australia.



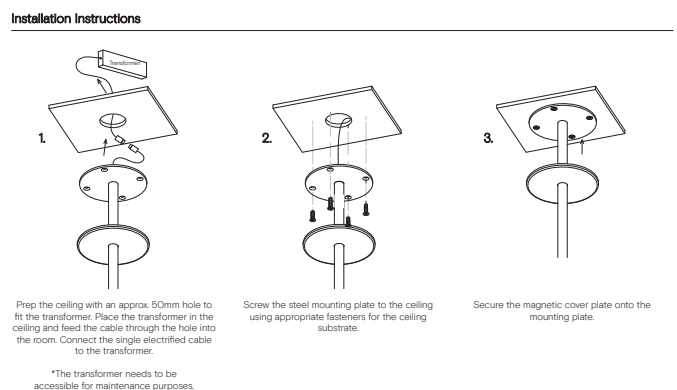
TECHNICAL DATA

Application	Interior Use Only	Input Power	100 - 240VAC
Glass Colour	Frosted / Clear	Output Voltage Standard	4V DC Driver (350mA Constant Current) Supplied with Remote Driver
Suspension Rod	Natural Brass / Matte Black / Matte White / Steel Finish / Medium Bronze Powdercoated	Dedicated LED	2 x 1W - 350mA (Standard) 2 x 2W - 350mA (additional cost) Lifespan - 60,000+ Hours
Glass Diameter	Small: 120 - 140mm Medium: 150 - 170mm Large: 200 - 220mm Glass thickness: 10-20mm	Colour Temperature	2700K / 3000K (Standard) / 4000K
Rod Length	1200mm (custom lengths available)	Dimming	Yes - Dimmable TRIAC/Phase (Standard) Dimmable DALI (additional cost) Please contact for alternative dimming
		Warranty	24 Months / 2 Years
		Certification	CE / AS/NZS - 60598.2.1

DIMENSIONS



MOUNTING





CORAL TRIO PENDANT

Designed and Handmade by Oliver Höglund & Ryan Roberts

Molten hot glass shaped and hand-blown at one thousand degrees cel-sius. Three flat disc shape made with quality Swedish clear glass.

The free formation design ensures that no two pieces are the same, giving you a truly aesthetic piece for your space.

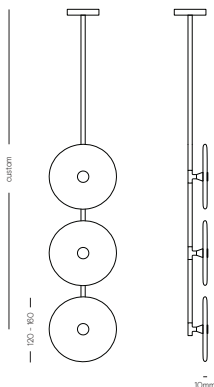
Hand Made in Currumbin, Australia.



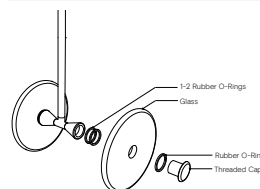
TECHNICAL DATA

Application	Interior Use Only	Input Power	100 - 240VAC
Glass Colour	Frosted / Clear	Output Voltage Standard	4V DC Driver (350mA Constant Current) Supplied with Remote Driver
Suspension Rod	Natural Brass / Matte Black / Matte White / Steel Finish / Medium Bronze Powdercoat	Dedicated LED	3 x 1W - 350mA (Standard) 3 x 2W - 350mA (additional cost) Lifespan - 60,000+ Hours
Glass Diameter	Small: 120 - 140mm Medium: 150 - 170mm Large: 200 - 220mm	Colour Temperature	2700K / 3000K (Standard) / 4000K
Rod Length	1200mm (custom lengths available)	Dimming	Yes - Dimmable TRIAC/Phase (Standard) Dimmable DALI (additional cost) Please contact for alternative dimming
Certification	CE / AS/NZS - 60598.2.1	Warranty	24 Months / 2 Years

DIMENSIONS



Glass Installation

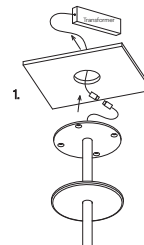


To install the glass piece, hold the glass against the LED housing and thread the 30mm threaded cap into the LED housing.

*Ensure the rubber o-rings are installed in the correct position, 1 behind the glass, and 1 in-front on the glass. If the glass is not held firmly when the threaded cap is fully screwed in, install an extra o-ring.

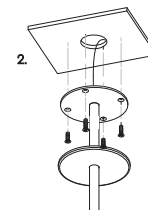
MOUNTING

Installation Instructions

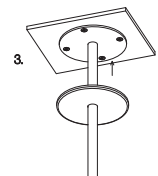


1. Prep the ceiling with an approx. 50mm hole to fit the transformer. Place the transformer in the ceiling and feed the cable through the hole into the room. Connect the single electrified cable to the transformer.

*The transformer needs to be accessible for maintenance purposes.



2. Screw the steel mounting plate to the ceiling using appropriate fasteners for the ceiling substrate.



3. Secure the magnetic cover plate onto the mounting plate.



CORAL

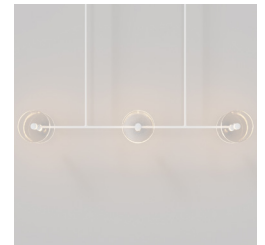
LINEAR ROD PENDANT (x6)

Designed and Handmade by Oliver Höglund & Ryan Roberts

Molten hot glass shaped and hand-blown at one thousand degrees cel-sius. Six flat disc shape made with quality Swedish clear glass.

The free formation design ensures that no two pieces are the same, giving you a truly aesthetic piece for your space.

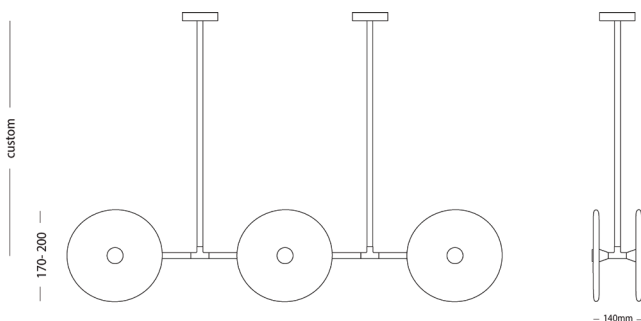
Hand Made in Currumbin, Australia.



TECHNICAL DATA

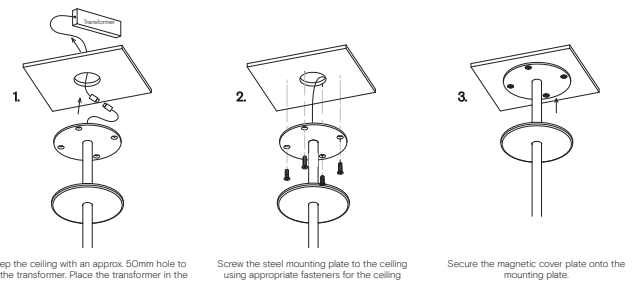
Application	Interior Use Only	Input Power	100 - 240VAC
Glass Colour	Clear / Frosted	Output Voltage (Standard)	17-19V DC Driver (350mA Constant Current) Supplied with Remote Driver
Rod Suspensions	Natural Brass / Matte Black / Matte White / Steel / Finish / Medium Bronze Powdercoat	Dedicated LED	6 x 1W - 350mA (Standard) 6 x 2W - 350mA (additional cost) Lifespan - 60,000+ Hours
Ceiling Canopy	Natural Brass / Matte Black / Matte White / Steel Finish Medium Bronze Powdercoat	Colour Temperature	2700K / 3000K (Standard) / 4000K
Dimensions	Glass Diameter: 170-200mm Glass Thickness: 10-20mm Linear Rod: 1000mm	Dimming	Yes - Dimmable TRIAC/Phase (Standard) Dimmable DALI (additional cost) Please contact for alternative dimming
Measurement between vertical rods - 500mm		Warranty	24 Months / 2 Years
		Certification	CE / AS/NZS - 60598.2.1

DIMENSIONS



MOUNTING

Installation Instructions



Prep the ceiling with an approx. 50mm hole to fit the transformer. Place the transformer in the ceiling and feed the cable through the hole into the room. Connect the single electrified cable to the transformer.

Screw the steel mounting plate to the ceiling using appropriate fasteners for the ceiling substrate.

Secure the magnetic cover plate onto the mounting plate.

*The transformer needs to be accessible for maintenance purposes.



CORAL ORGANIC

FROSTED WALL LIGHT

Designed and Handmade by Oliver Höglund & Ryan Roberts

Molten hot glass shaped and hand-blown at one thousand degrees cel-sius. A flat disc shape made with quality Swedish clear glass.

The free formation design ensures that no two pieces are the same, giving you a truly aesthetic piece for your space.

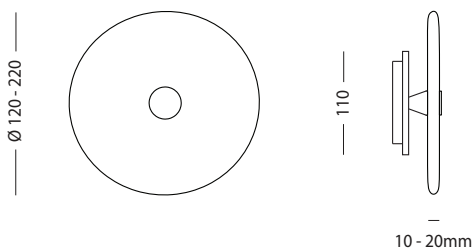
Hand Made in Currumbin, Australia.



TECHNICAL DATA

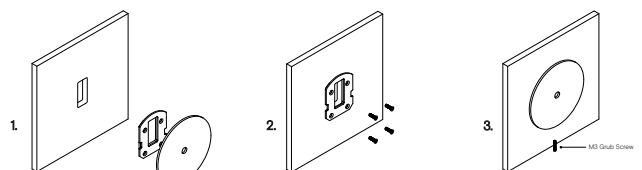
Application	Interior & Outdoor Use	Input Power	100-240V AC
Glass	Frosted	Output Power	4V DC Driver (350mA Constant Current) Supplied with Remote Driver
Cover Cap Finish	Matte Black / Matte White / Brass Finish / Steel Finish / Medium Bronze Powdercoat	Dedicated LED	1W - 350mA (Standard) / 2W (additional cost) Lifespan - 60,000+ Hours
Wall Mount Finish	Matte Black / Matte White / Brass Finish / Steel Finish / Medium Bronze Powdercoat	Colour Temperature	2700K / 3000K (Standard) / 4000K
Glass Dimensions	180 - 220mm Wall Mount: 110 x 15mm Protrudes: 50mm	Dimming	Single-Use-1W LED Non-Dimmable (Standard) Optional: Single-use - 2W LED Triac Dimmable DALI (additional cost) Please contact for alternative dimming options
IP Rating	IP65	Mounting	Integral Wall Bracket
Warranty	24 Months / 2 Years	Certification	CE / AS/NZS - 60598.2.1

DIMENSIONS



MOUNTING

Installation Instructions



1. Prep the wall with a hole match the wall plate cutout. Secure the transformer into the wall cavity and feed the cable through the hole into the room. Connect the single electrified cable to the transformer.

2. Screw the mounting plate to the wall using appropriate fasteners for the wall substrate.

3. Fit the circular wall plate over the mounting plate and secure with the supplied M3 grub screw at the bottom of the plate.

*The transformer needs to be accessible for maintenance purposes.



CORAL ORGANIC CLEAR WALL LIGHT

Designed and Handmade by Oliver Höglund & Ryan Roberts

Molten hot glass shaped and hand-blown at one thousand degrees cel-sius. A flat disc shape made with quality Swedish clear glass.

The free formation design ensures that no two pieces are the same, giving you a truly aesthetic piece for your space.

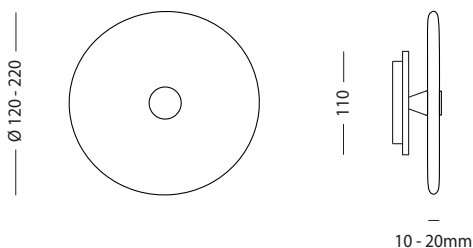
Hand Made in Currumbin, Australia.



TECHNICAL DATA

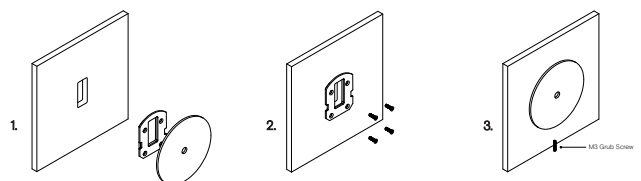
Application	Interior & Outdoor Use	Input Power	100-240V AC
Glass	Clear	Output Power	4V DC Driver (350mA Constant Current) Supplied with Remote Driver
Cover Cap Finish	Matte Black / Matte White / Brass Finish / Steel Finish / Medium Bronze Powdercoat	Dedicated LED	1W - 350mA (Standard) / 2W (additional cost) Lifespan - 60,000+ Hours
Wall Mount Finish	Matte Black / Matte White / Brass Finish / Steel Finish / Medium Bronze Powdercoat	Colour Temperature	2700K / 3000K (Standard) / 4000K
Glass Dimensions	180 - 220mm Wall Mount: 110 x 15mm Protrudes: 50mm	Dimming	Single-Use-1W LED Non-Dimmable (Standard) Optional: Single-use - 2W LED Triac Dimmable DALI (additional cost) Please contact for alternative dimming options
IP Rating	IP65	Mounting	Integral Wall Bracket
Warranty	24 Months / 2 Years	Certification	CE / AS/NZS - 60598.2.1

DIMENSIONS



MOUNTING

Installation Instructions

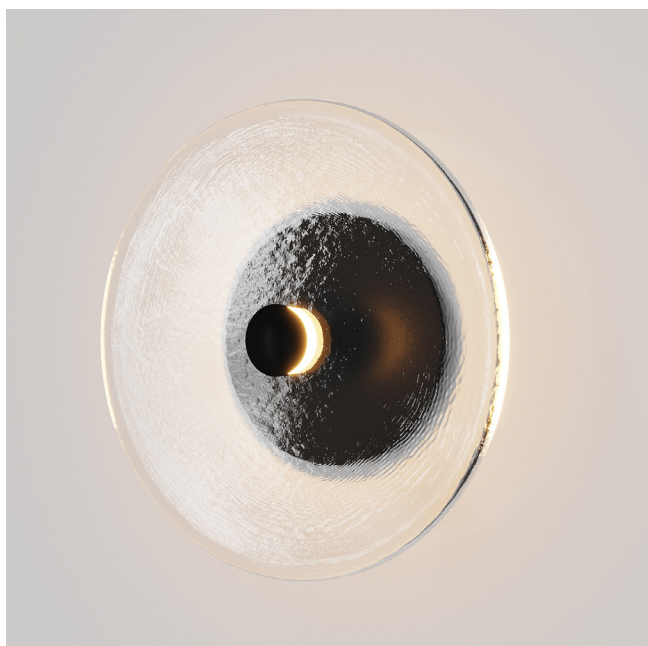


1. Prep the wall with a hole match the wall plate cutout. Secure the transformer into the wall cavity and feed the cable through the hole into the room. Connect the single electrified cable to the transformer.

2. Screw the mounting plate to the wall using appropriate fasteners for the wall substrate.

3. Fit the circular wall plate over the mounting plate and secure with the supplied M3 grub screw at the bottom of the plate.

*The transformer needs to be accessible for maintenance purposes.



CORAL

CLEAR WALL LIGHT

Designed and Handmade by Oliver Höglund & Ryan Roberts

Molten hot glass shaped and hand-blown at one thousand degrees cel-sius. A flat disc shape made with quality Swedish clear glass.

The free formation design ensures that no two pieces are the same, giving you a truly aesthetic piece for your space.

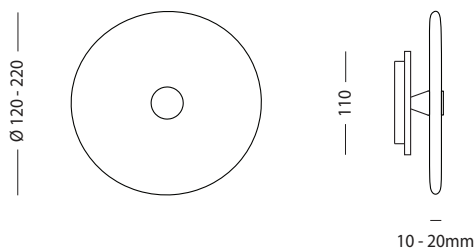
Hand Made in Currumbin, Australia.



TECHNICAL DATA

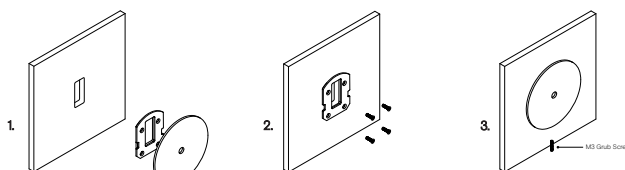
Application	Interior & Outdoor Use	Input Power	100-240V AC
Glass	Clear	Output Power	4V DC Driver (350mA Constant Current) Supplied with Remote Driver
Cover Cap Finish	Matte Black / Matte White / Brass Finish / Steel Finish / Medium Bronze Powdercoat	Dedicated LED	1W - 350mA (Standard) / 2W (additional cost) Lifespan - 60,000+ Hours
Wall Mount Finish	Matte Black / Matte White / Brass Finish / Steel Finish / Medium Bronze Powdercoat	Colour Temperature	2700K / 3000K (Standard) / 4000K
Glass Dimensions	Small: 120 - 140mm Medium: 150 - 170mm Large: 200 - 220mm Wall Mount: 110 x 15mm Protrudes: 50mm	Dimming	Single-Use-1W LED Non-Dimmable (Standard) Optional: Single-use - 2W LED Triac Dimmable DALI (additional cost) Please contact for alternative dimming options
IP Rating	IP65	Mounting	Integral Wall Bracket
Warranty	24 Months / 2 Years	Certification	CE / AS/NZS - 60598.2.1

DIMENSIONS



MOUNTING

Installation Instructions



1. Prep the wall with an hole match the wall plate cutout. Secure the transformer into the wall cavity and feed the cable through the hole into the room. Connect the single electrified cable to the transformer.

2. Screw the mounting plate to the wall using appropriate fasteners for the wall substrate.

3. Fit the circular wall plate over the mounting plate and secure with the supplied M3 grub screw at the bottom of the plate.

*The transformer needs to be accessible for maintenance purposes.



CORAL

LINEAR ROD PENDANT (x4)

Designed and Handmade by Oliver Höglund & Ryan Roberts

Molten hot glass shaped and hand-blown at one thousand degrees cel-sius. Four flat disc shape made with quality Swedish clear glass.

The free formation design ensures that no two pieces are the same, giving you a truly aesthetic piece for your space.

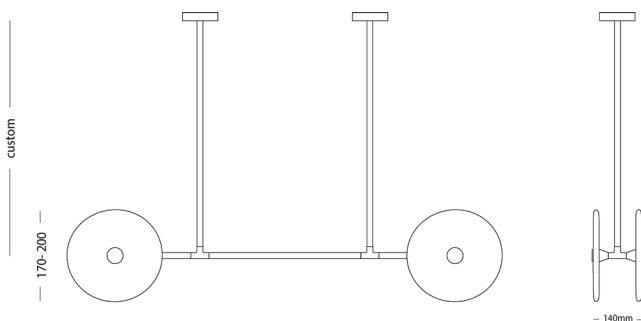
Hand Made in Currumbin, Australia.



TECHNICAL DATA

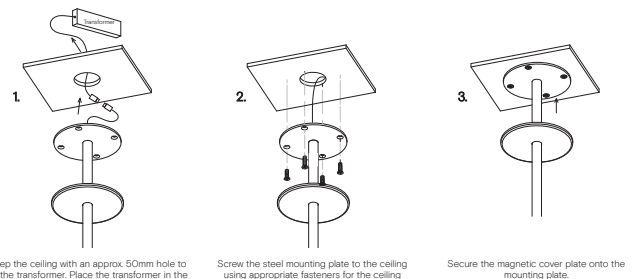
Application	Interior Use Only	Input Power	100 - 240VAC
Glass Colour	Clear / Frosted	Output Voltage (Standard)	12V DC Driver (350mA Constant Current) Supplied with Remote Driver
Rod Suspensions	Natural Brass / Matte Black / Matte White / Steel Finish / Medium Bronze Powdercoat	Dedicated LED	4 x 1W - 350mA (Standard) 4 x 2W - 350mA (additional cost) Lifespan - 60,000+ Hours
Ceiling Canopy	Natural Brass / Matte Black / Matte White / Steel Finish / Medium Bronze Powdercoat	Colour Temperature	2700K / 3000K (Standard) / 4000K
Dimensions	Glass Diameter: 170-200mm Glass Thickness: 10-20mm Linear Rod: 1000mm	Dimming	Yes - Dimmable TRIAC/Phase (Standard) Dimmable DALI (additional cost) Please contact for alternative dimming
Measurement between vertical rods - 500mm		Warranty	24 Months / 2 Years
		Certification	CE / AS/NZS - 60598.2.1

DIMENSIONS



MOUNTING

Installation Instructions



Prep the ceiling with an approx. 50mm hole to fit the transformer. Place the transformer in the ceiling and feed the cable through the hole into the room. Connect the single electrified cable to the transformer.

Screw the steel mounting plate to the ceiling using appropriate fasteners for the ceiling substrate.

Secure the magnetic cover plate onto the mounting plate.

*The transformer needs to be accessible for maintenance purposes.



CORAL

LINEAR QUAD PENDANT (x4)

Designed and Handmade by Oliver Höglund & Ryan Roberts

Molten hot glass shaped and hand-blown at one thousand degrees cel-sius. Four flat disc shape made with quality Swedish clear glass.

The free formation design ensures that no two pieces are the same, giving you a truly aesthetic piece for your space.

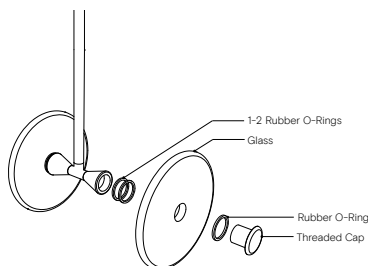
Hand Made in Currumbin, Australia.



TECHNICAL DATA

Application	Interior Use Only	Input Power	100 - 240VAC
Glass Colour	Clear / Frosted	Output Voltage (Standard)	12V DC Driver (350mA Constant Current) Supplied with Remote Driver
Rod Suspensions	Natural Brass / Matte Black / Matte White / Steel Finish / Medium Bronze Powdercoat	Dedicated LED	4 x 1W - 350mA (Standard) 4 x 2W - 350mA (additional cost) Lifespan - 60,000+ Hours
Ceiling Canopy	Natural Brass / Matte Black / Matte White / Steel Finish / Medium Bronze Powdercoat	Colour Temperature	2700K / 3000K (Standard) / 4000K
Dimensions	Glass Diameter: 2 x Coral Small Glass - 120mm 2 x Coral Large Glass - 200mm Linear Rod: 800mm	Dimming	Yes - Dimmable TRIAC/Phase (Standard) Dimmable DALI (additional cost) Please contact for alternative dimming
Measurement between vertical rods - 800mm		Warranty	24 Months / 2 Years
		Certification	CE / AS/NZS - 60598.2.1

DIMENSIONS

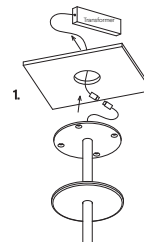


To install the glass piece, hold the glass against the LED housing and thread the 30mm threaded cap into the LED housing.

*Ensure the rubber o-rings are installed in the correct position, 1 behind the glass, and 1 in-front on the glass. If the glass is not held firmly when the threaded cap is fully screwed in, install an extra o-ring.

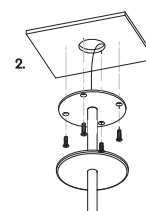
MOUNTING

Installation Instructions

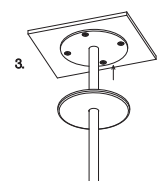


Prep the ceiling with an approx. 50mm hole to fit the transformer. Place the transformer in the ceiling and feed the cable through the hole into the room. Connect the single electrified cable to the transformer.

*The transformer needs to be accessible for maintenance purposes.



Screw the steel mounting plate to the ceiling using appropriate fasteners for the ceiling substrate.



Secure the magnetic cover plate onto the mounting plate.



CORAL DUO

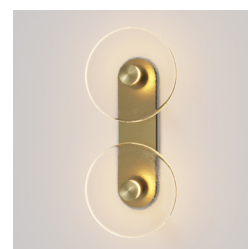
WALL LIGHT

Designed and Handmade by Oliver Höglund & Ryan Roberts

Molten hot glass shaped and hand-blown at one thousand degrees cel-sius. Two flat disc shape made with quality Swedish clear glass.

The free formation design ensures that no two pieces are the same, giving you a truly aesthetic piece for your space.

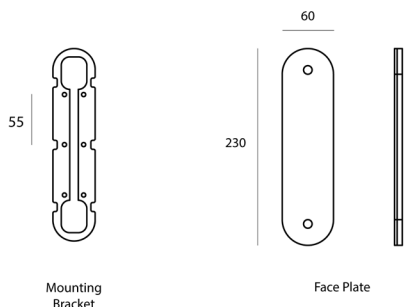
Hand Made in Currumbin, Australia.



TECHNICAL DATA

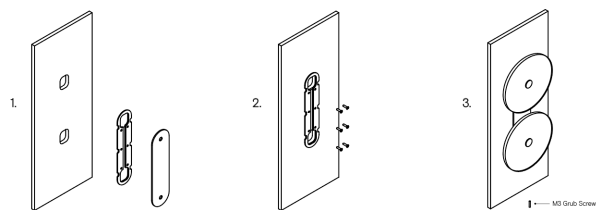
Application	Interior Use (Optional: Outdoor Use) Low Voltage (under 12v)	Input Power	100-240V AC
Glass	Frosted / Clear	Output Power	4V DC Driver (350mA Constant Current) Supplied with Remote Driver
Cover Cap Finish	Matte Black / Matte White / Brass Finish / Steel Finish / Medium Bronze Powdercoat	Dedicated LED	2 x 1W - (Standard) / 2 x 2W (additional cost) Lifespan - 60,000+ Hours
Wall Mount Finish	Matte Black / Matte White / Brass Finish / Steel Finish / Medium Bronze Powdercoat	Colour Temperature	2700K / 3000K (Standard) / 4000K
Glass Dimensions	150 - 170mm Wall Mount: 230 x 60mm Protrudes: 50mm	Dimming	Single-Use-1W LED Dimmable (Standard) DALI (additional cost) Please contact for alternative dimming options
IP Rating	IP20 Indoor	Mounting	Integral Wall Bracket
Warranty	24 Months / 2 Years	Certification	CE / AS/NZS - 60598.2.1

DIMENSIONS



MOUNTING

Installation Instructions



1. Prep the wall with 2 holes to match the wall plate cutouts. Secure the transformer into the wall cavity and feed the cable through the hole into the room. Connect the single electrified cable to the transformer.

2. Screw the mounting plate to the wall using appropriate fasteners for the wall substrate.

3. Fit the face plate (with attached lights) over the mounting plate and secure with the supplied M3 grub screw at the bottom of the plate.

*The transformer needs to be accessible for maintenance purposes.



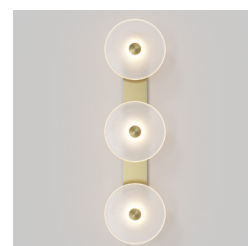
CORAL TRIO WALL LIGHT

Designed and Handmade by Oliver Höglund & Ryan Roberts

Molten hot glass shaped and hand-blown at one thousand degrees cel-sius. Three flat disc shape made with quality Swedish clear glass.

The free formation design ensures that no two pieces are the same, giving you a truly aesthetic piece for your space.

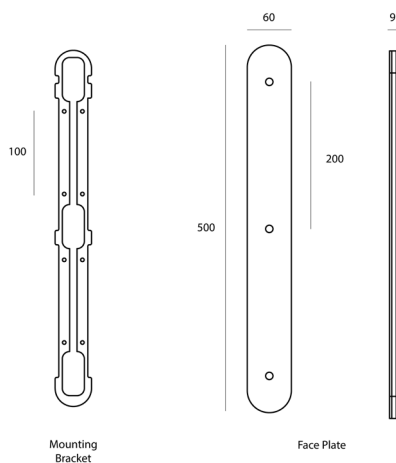
Hand Made in Currumbin, Australia.



TECHNICAL DATA

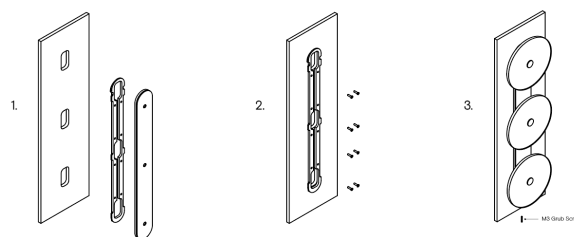
Application	Interior Use (Optional: Outdoor Use) Low Voltage (under 12v)	Input Power	100-240V AC
Glass	Frosted / Clear	Output Power	4V DC Driver (350mA Constant Current) Supplied with Remote Driver
Cover Cap Finish	Matte Black / Matte White / Brass Finish / Steel Finish / Medium Bronze Powdercoat	Dedicated LED	3 x 1W - (Standard) / 3 x 2W (additional cost) Lifespan - 60,000+ Hours
Wall Mount Finish	Matte Black / Matte White / Brass Finish / Steel Finish / Medium Bronze Powdercoat	Colour Temperature	2700K / 3000K (Standard) / 4000K
Glass Dimensions	150 - 170mm Wall Mount: 500 x 60mm Protrudes: 50mm	Dimming	Single-Use-1W LED Dimmable (Standard) DALI (additional cost) Please contact for alternative dimming options
IP Rating	IP20 Indoor	Mounting	Integral Wall Bracket
Warranty	24 Months / 2 Years	Certification	CE / AS/NZS - 60598.2.1

DIMENSIONS



MOUNTING

Installation Instructions



1. Prep the wall with 3 holes to match the wall plate cutouts. Secure the transformer into the wall cavity and feed the cable through the hole into the room. Connect the single electrified cable to the transformer.

*The transformer needs to be accessible for maintenance purposes.

2. Screw the mounting plate to the wall using appropriate fasteners for the wall substrate.

3. Fit the face plate (with attached lights) over the mounting plate and secure with the supplied M3 grub screw at the bottom of the plate.



SORA PENDANT

Designed and Handmade by Oliver Höglund & Ryan Roberts

Molten hot glass shaped and hand-blown at one thousand degrees-celsius. Tiny air bubbles cased with quality clear glass produce a truly unique shadow effect. Made with quality Swedish glass.

The free formation design ensures that no two pieces are the same, giving you a truly aesthetic piece for your space.

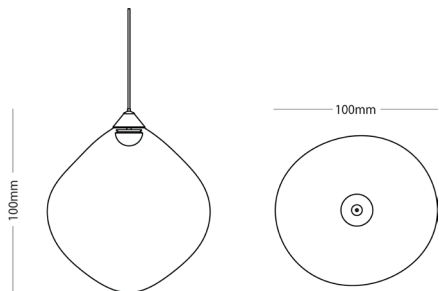
Hand-Blown in Currumbin, Australia.



TECHNICAL DATA

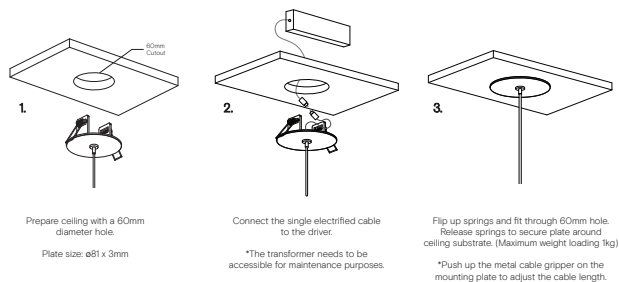
Application	Interior Use Only Low Voltage (under 12v)	Input Power	100 - 240V AC
Glass Colour	Clear	Output Voltage	4V DC Driver (350mA Constant Current) Supplied with Remote Driver
Lampholder Finish	Matte Black / Brass Finish / Steel Finish / Matte White / Medium Bronze Powdercoat	Dedicated LED	1W - 350mA (Standard) / 2W (additional cost) Lifespan - 60,000+ Hours
Ceiling Mount	Matte Black / Matte White	Lumen Output	150lm (1W) (Standard) / 300lm (2W)
Dimensions	100 x 100mm (approx.)	Colour Temperature	2700K / 3000K (Standard) / 4000K
Suspension	1500mm Steel / Black / White Cable Longer lengths on request	Dimming	Single-Use-1W LED Non-Dimmable (Standard) Optional Single-use - 1W LED Dimmable with DALI (additional cost) Please contact for alternative dimming options
Weight	0.5kg	Mounting	81mm Flat disc recessed ceiling plate Custom designed ceiling plate on request
Warranty	24 Months / 2 Years		
Certification	CE / AS/NZS - 60598.2.1		

DIMENSIONS



MOUNTING

Installation Instructions





SORA (Clear)

PENDANT

Designed and Handmade by Oliver Höglund & Ryan Roberts

Molten hot glass shaped and hand-blown at one thousand degrees-celsius. The free formation design ensures that no two pieces are the same, giving you a truly aesthetic piece for your space.

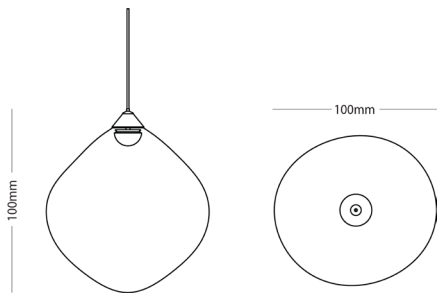
Hand-Blown in Currumbin, Australia.



TECHNICAL DATA

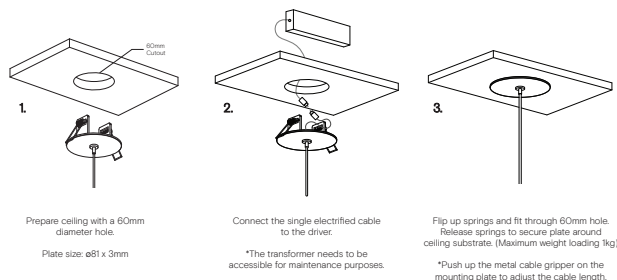
Application	Interior Use Only Low Voltage (under 12v)	Input Power	100 - 240V AC
Glass Colour	Clear	Output Voltage	4V DC Driver (350mA Constant Current) Supplied with Remote Driver
Lampholder Finish	Matte Black / Brass Finish / Steel Finish / Matte White / Medium Bronze Powdercoat	Dedicated LED	1W - 350mA (Standard) / 2W (additional cost) Lifespan - 60,000+ Hours
Ceiling Mount	Matte Black / Matte White	Lumen Output	150lm (1W) (Standard) / 300lm (2W)
Dimensions	100 x 100mm (approx.)	Colour Temperature	2700K / 3000K (Standard) / 4000K
Suspension	1500mm Steel / Black / White Cable Longer lengths on request	Dimming	Single-Use-1W LED Non-Dimmable (Standard) Optional Single-use - 1W LED Dimmable with DALI (additional cost) Please contact for alternative dimming options
Weight	0.5kg	Mounting	81mm Flat disc recessed ceiling plate Custom designed ceiling plate on request
Warranty	24 Months / 2 Years		
Certification	CE / AS/NZS - 60598.2.1		

DIMENSIONS



MOUNTING

Installation Instructions





SORA WALL LIGHT

Designed and Handmade by Oliver Höglund & Ryan Roberts

Molten hot glass shaped and hand-blown at one thousand degrees-celsius. Tiny air bubbles cased with quality clear glass produce a truly unique shadow effect. Made with quality Swedish glass.

The free formation design ensures that no two pieces are the same, giving you a truly aesthetic piece for your space.

Hand-Blown in Currumbin, Australia

GLASS FINISH



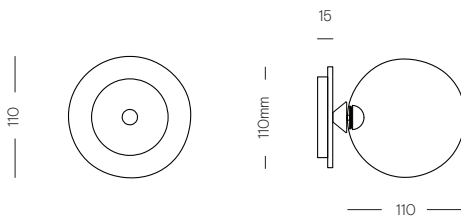
Clear



TECHNICAL DATA

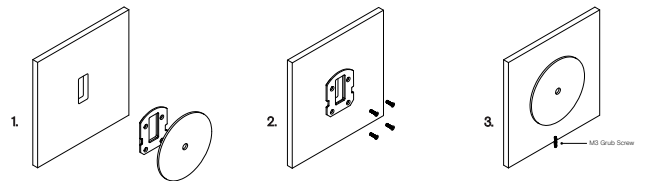
Application	Interior Use (Optional: Outdoor Use) Low Voltage (under 12v)	Input Power	100-240V AC
Glass	Clear	Output Power	4V DC Driver (350mA Constant Current) Supplied with Remote Driver
Wall Plate Finish	Matte Black / Matte White / Brass Finish / Steel Finish / Medium Bronze Powdercoat	Dedicated LED	1W - 350mA (Standard) / 2W (additional cost) Lifespan - 60,000+ Hours
Dimensions	Glass: 110 x 110mm Mounting Plate: 110 x 15mm Protudes: 125mm	Lumen Output	150lm (1W) (Standard) / 300lm (2W)
Weight	0.5kg	Colour Temperature	2700K / 3000K (Standard) / 4000K
IP Rating	IP20 Indoor (Optional: IP55 Outdoor)	Dimming	Single-Use-1W LED Non-Dimmable (Standard) Optional Single-use - 1W LED Dimmable with DALI (additional cost) Please contact for alternative dimming options
Warranty	24 Months / 2 Years	Mounting	Integral Wall Bracket
Certification	CE / AS/NZS - 60598.2.1		

DIMENSIONS



MOUNTING

Installation Instructions



1. Prep the wall with an hole match the wall plate cutout. Secure the transformer into the wall cavity and feed the cable through the hole into the room. Connect the single electrified cable to the transformer.

2. Screw the mounting plate to the wall using appropriate fasteners for the wall substrate.

3. Fit the circular wall plate over the mounting plate and secure with the supplied M3 grub screw at the bottom of the plate.

*The transformer needs to be accessible for maintenance purposes.



SORA CLEAR WALL LIGHT

Designed and Handmade by Oliver Höglund & Ryan Roberts

Molten hot glass shaped and hand-blown at one thousand degrees-celsius. Tiny air bubbles cased with quality clear glass produce a truly unique shadow effect. Made with quality Swedish glass.

The free formation design ensures that no two pieces are the same, giving you a truly aesthetic piece for your space.

Hand-Blown in Currumbin, Australia

GLASS FINISH



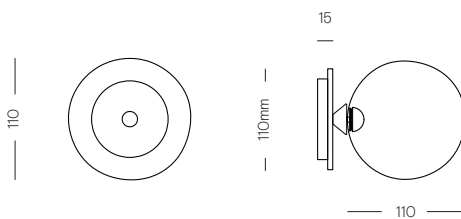
Clear



TECHNICAL DATA

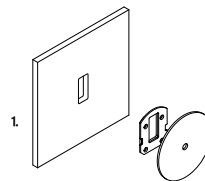
Application	Interior Use (Optional: Outdoor Use) Low Voltage (under 12v)	Input Power	100-240V AC
Glass	Clear	Output Power	4V DC Driver (350mA Constant Current) Supplied with Remote Driver
Wall Plate Finish	Matte Black / Matte White / Brass Finish / Steel Finish / Medium Bronze Powdercoat	Dedicated LED	1W - 350mA (Standard) / 2W (additional cost) Lifespan - 60,000+ Hours
Dimensions	Glass: 110 x 110mm Mounting Plate: 110 x 15mm Protudes: 125mm	Lumen Output	150lm (1W) (Standard) / 300lm (2W)
Weight	0.5kg	Colour Temperature	2700K / 3000K (Standard) / 4000K
IP Rating	IP20 Indoor (Optional: IP55 Outdoor)	Dimming	Single-Use-1W LED Non-Dimmable (Standard) Optional Single-use - 1W LED Dimmable with DALI (additional cost) Please contact for alternative dimming options
Warranty	24 Months / 2 Years	Mounting	Integral Wall Bracket
Certification	CE / AS/NZS - 60598.2.1		

DIMENSIONS

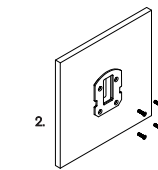


MOUNTING

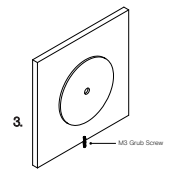
Installation Instructions



1. Prep the wall with an hole match the wall plate cutout. Secure the transformer into the wall cavity and feed the cable through the hole into the room. Connect the single electrified cable to the transformer.



2. Screw the mounting plate to the wall using appropriate fasteners for the wall substrate.



3. Fit the circular wall plate over the mounting plate and secure with the supplied M3 grub screw at the bottom of the plate.

*The transformer needs to be accessible for maintenance purposes.



SORA

SINGLE ROD - PENDANT

Designed and Handmade by Oliver Höglund & Ryan Roberts

Molten hot glass shaped and hand-blown at one thousand degrees-celsius. Tiny air bubbles cased with quality clear glass produce a truly unique shadow effect. Made with quality Swedish glass.

The free formation design ensures that no two pieces are the same, giving you a truly aesthetic piece for your space.

Hand-Blown in Currumbin, Australia

GLASS FINISH



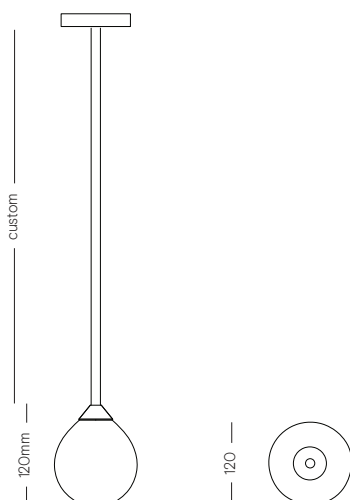
Clear



TECHNICAL DATA

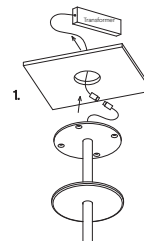
Application	Interior Use Only	Input Power	100 - 240VAC
Glass Colour	Clear	Output Power	4V DC Driver (350mA Constant Current) Supplied with Remote Driver
Rod Finish	Natural Brass / Matte Black / Matte White / Steel Finish / Medium Bronze Powdercoat	Dedicated LED	1W - 350mA (Standard) / 2W (additional cost) Lifespan - 60,000+ Hours
Dimensions	Glass: 120 x 120mm Rod: Standard 1200mm (Optional: Custom length)	Lumen Output	150lm (1W) (Standard) / 300lm (2W)
Ceiling Mount	Ø 110mm	Colour Temperature	2700K / 3000K (Standard) / 4000K
Weight	1.5kg	Dimming	Single-Use-1W LED Non-Dimmable (Standard) Optional Single-use - 1W LED Dimmable with DALI (additional cost) Please contact for alternative dimming options
Warranty	24 Months / 2 Years		
Certification	CE / AS/NZS - 60598.2.1		

DIMENSIONS

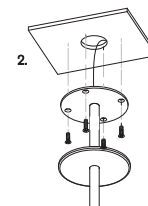


MOUNTING

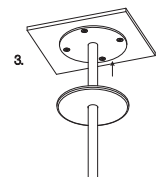
Installation Instructions



Prep the ceiling with an approx. 50mm hole to fit the transformer. Place the transformer in the ceiling and feed the cable through the hole into the room. Connect the single electrified cable to the transformer.



Screw the steel mounting plate to the ceiling using appropriate fasteners for the ceiling substrate.



Secure the magnetic cover plate onto the mounting plate.

*The transformer needs to be accessible for maintenance purposes.



CORAL

SINGLE ROD (FROSTED) PENDANT

Designed and Handmade by Oliver Höglund & Ryan Roberts

Molten hot glass shaped and hand-blown at one thousand degrees cel-sius. A flat disc shape made with quality Swedish clear glass.

The free formation design ensures that no two pieces are the same, giving you a truly aesthetic piece for your space.

Hand Made in Currumbin, Australia.

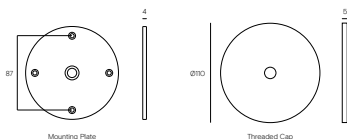


TECHNICAL DATA

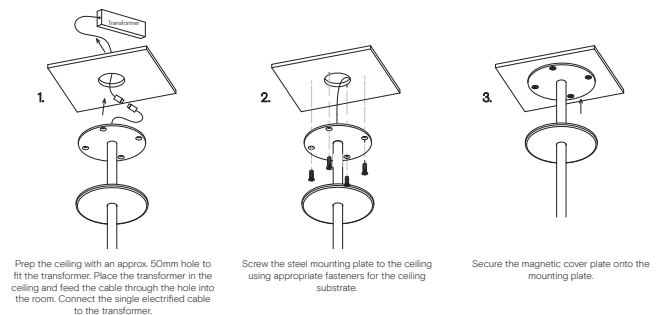
Application	Interior Use Only	Input Power	100 - 240VAC
Glass Colour	Frosted	Output Voltage	4V DC Driver (350mA Constant Current) Supplied with Remote Driver
Suspension Rod	Natural Brass / Matte Black / Matte White / Steel Finish / Medium Bronze Powdercoated	Dedicated LED	1W - 350mA (Standard) / 2W (additional cost) Lifespan - 60,000+ Hours
Glass Diameter	Small: 120 - 140mm Medium: 150 - 170mm Large: 200 - 220mm Glass thickness: 10-20mm	Colour Temperature	2700K / 3000K (Standard) / 4000K
Rod Length	1200mm (custom lengths available)	Dimming	Single-Use-1W LED Non-Dimmable (Standard) Optional Single-use - 1W LED Dimmable with DALI (additional cost) Please contact for alternative dimming options
		Warranty	24 Months / 2 Years
		Certification	CE / AS/NZS - 60598.2.1

MOUNTING

Dimensions



Installation Instructions



Prep the ceiling with an approx. 50mm hole to fit the transformer. Place the transformer in the ceiling and feed the cable through the hole into the room. Connect the single electrified cable to the transformer.

*The transformer needs to be accessible for maintenance purposes.



CORAL SINGLE ROD (CLEAR) PENDANT

Designed and Handmade by Oliver Höglund & Ryan Roberts

Molten hot glass shaped and hand-blown at one thousand degrees cel-sius. A flat disc shape made with quality Swedish clear glass.

The free formation design ensures that no two pieces are the same, giving you a truly aesthetic piece for your space.

Hand Made in Currumbin, Australia.

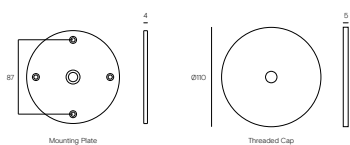


TECHNICAL DATA

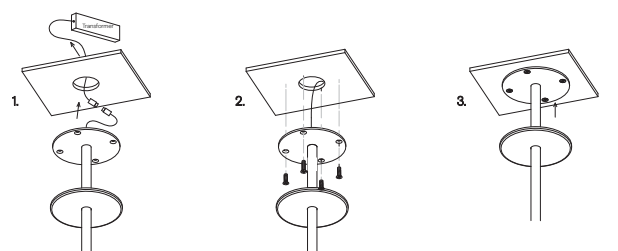
Application	Interior Use Only	Input Power	100 - 240VAC
Glass Colour	Clear	Output Voltage	4V DC Driver (350mA Constant Current) Supplied with Remote Driver
Suspension Rod	Natural Brass / Matte Black / Matte White / Steel Finish / Medium Bronze Powdercoated	Dedicated LED	1W - 350mA (Standard) / 2W (additional cost) Lifespan - 60,000+ Hours
Glass Diameter	Small: 120 - 140mm Medium: 150 - 170mm Large: 200 - 220mm Glass thickness: 10-20mm	Colour Temperature	2700K / 3000K (Standard) / 4000K
Rod Length	1200mm (custom lengths available)	Dimming	Single-Use-1W LED Non-Dimmable (Standard) Optional Single-use - 1W LED Dimmable with DALI (additional cost) Please contact for alternative dimming options
		Warranty	24 Months / 2 Years
		Certification	CE / AS/NZS - 60598.2.1

MOUNTING

Dimensions



Installation Instructions



1. Prep the ceiling with an approx. 50mm hole to fit the transformer. Place the transformer in the ceiling and feed the cable through the hole into the room. Connect the single electrified cable to the transformer.

2. Screw the steel mounting plate to the ceiling using appropriate fasteners for the ceiling substrate.

3. Secure the magnetic cover plate onto the mounting plate.

*The transformer needs to be accessible for maintenance purposes.