

FLO WALL LIGHT

Designed and Handmade by Oliver Höglund & Ryan Roberts

Molten hot glass shaped and hand-blown at one thousand degrees celsius. An organic shape made with quality Swedish clear glass to dress a defused pinapple LED bulb.

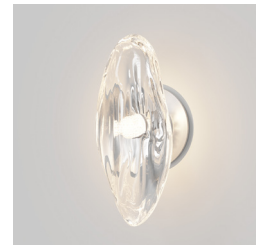
The defused LED bulb shines and refract off the contours of the FLO wall light to give a unique one of a kind lighting design.

Hand-Blown in Currumbin, Australia

GLASS FINISH



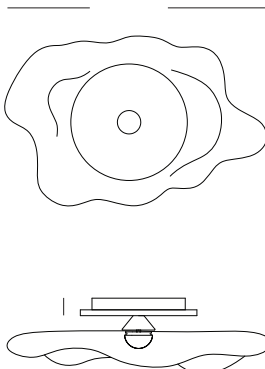
Clear



TECHNICAL DATA

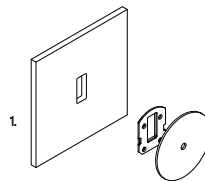
Application	Interior Use (Optional: Outdoor Use) Low Voltage (under 12v)	Input Power	100-240V AC
Glass	Clear	Output Power	4V DC Driver (350mA Constant Current) Supplied with Remote Driver
Wall Plate Finish	Matte Black / Matte White / Brass Finish / Steel Finish / Medium Bronze Powdercoat	Dedicated LED	1W - 350mA (Standard) / 2W (additional cost) Lifespan - 60,000+ Hours
Dimensions	Glass: Length 180 - 220mm / Width: 80 - 110mm Mounting Plate: 110 x 15mm Protrudes: 100 - 120mm	Lumen Output	150lm (1W) (Standard) / 300lm (2W)
Weight	0.5kg	Colour Temperature	2700K / 3000K (Standard) / 4000K
IP Rating	IP20 Indoor (Optional: IP55 Outdoor)	Dimming	Single-Use-1W LED Non-Dimmable (Standard) Optional Single-use - 1W LED Dimmable with DALI (additional cost) Please contact for alternative dimming options
Warranty	24 Months / 2 Years	Mounting	Integral Wall Bracket
Certification	CE / AS/NZS - 60598.2.1		

DIMENSIONS



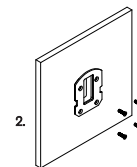
MOUNTING

Installation Instructions

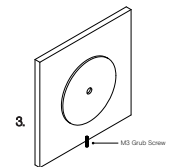


1. Prep the wall with an hole match the wall plate cutout. Secure the transformer into the wall cavity and feed the cable through the hole into the room. Connect the single electrified cable to the transformer.

*The transformer needs to be accessible for maintenance purposes.



2. Screw the mounting plate to the wall using appropriate fasteners for the wall substrate.



3. Fit the circular wall plate over the mounting plate and secure with the supplied M3 grub screw at the bottom of the plate.