

CORAL CLEAR WALL LIGHT

Designed and Handmade by Oliver Höglund & Ryan Roberts

Molten hot glass shaped and hand-blown at one thousand degrees cel-sius. A flat disc shape made with quality Swedish clear glass.

The free formation design ensures that no two pieces are the same, giving you a truly aesthetic piece for your space.

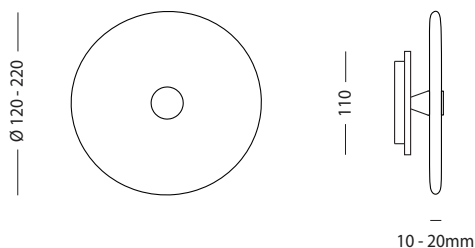
Hand Made in Currumbin, Australia.



TECHNICAL DATA

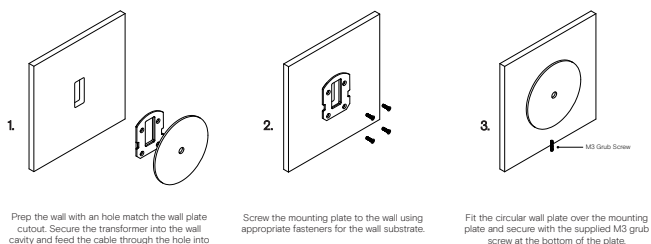
Application	Interior & Outdoor Use	Input Power	100-240V AC
Glass	Clear	Output Power	4V DC Driver (350mA Constant Current) Supplied with Remote Driver
Cover Cap Finish	Matte Black / Matte White / Brass Finish / Steel Finish / Medium Bronze Powdercoat	Dedicated LED	1W - 350mA (Standard) / 2W (additional cost) Lifespan - 60,000+ Hours
Wall Mount Finish	Matte Black / Matte White / Brass Finish / Steel Finish / Medium Bronze Powdercoat	Colour Temperature	2700K / 3000K (Standard) / 4000K
Glass Dimensions	Small: 120 - 140mm Medium: 150 - 170mm Large: 200 - 220mm Wall Mount: 110 x 15mm Protrudes: 50mm	Dimming	Single-Use-1W LED Non-Dimmable (Standard) Optional: Single-use - 2W LED Triac Dimmable DALI (additional cost) Please contact for alternative dimming options
IP Rating	IP65	Mounting	Integral Wall Bracket
Warranty	24 Months / 2 Years	Certification	CE / AS/NZS - 60598.2.1

DIMENSIONS



MOUNTING

Installation Instructions



1. Prep the wall with a hole match the wall plate cutout. Secure the transformer into the wall cavity and feed the cable through the hole into the room. Connect the single electrified cable to the transformer.

2. Screw the mounting plate to the wall using appropriate fasteners for the wall substrate.

3. Fit the circular wall plate over the mounting plate and secure with the supplied M3 grub screw at the bottom of the plate.

*The transformer needs to be accessible for maintenance purposes.