



# CORAL STONE FROSTED WALL LIGHT

Designed and Handmade by Oliver Höglund & Ryan Roberts

Molten hot glass shaped and hand-blown at one thousand degrees cel-sius. A flat disc shape made with quality Swedish clear glass.

The free formation design ensures that no two pieces are the same, giving you a truly aesthetic piece for your space.

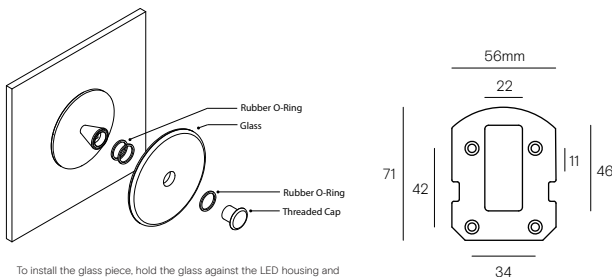
Hand Made in Currumbin, Australia.



## TECHNICAL DATA

Application	Interior & Outdoor Use	Input Power	100-240V AC
Glass	Frosted	Output Power	4V DC Driver (350mA Constant Current) Supplied with Remote Driver
Cover Cap Finish	Matte Black / Matte White / Brass Finish / Steel Finish / Medium Bronze Powdercoat	Dedicated LED	1W - 350mA (Standard) / 2W (additional cost) Lifespan - 60,000+ Hours
Wall Mount Finish	Laminam Calce - Bianco	Colour Temperature	2700K / 3000K (Standard) / 4000K
Glass Dimensions	140mm Glass Thickness: 10-20mm	Dimming	Single-Use-1W LED Non-Dimmable (Standard) Optional Single-use - 1W LED Dimmable with DALI (additional cost) Please contact for alternative dimming options
Wall Mount:	180 x 20mm Protrudes: 50mm	Mounting	Integral Wall Bracket
IP Rating	IP65 Outdoor	Certification	CE / AS/NZS - 60598.2.1
Warranty	24 Months / 2 Years		

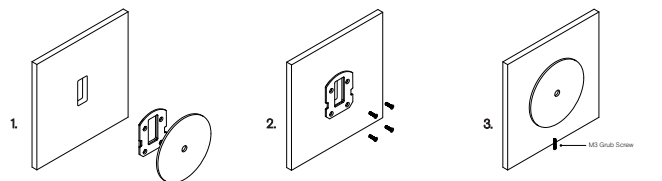
## GLASS INSTALLATION



To install the glass piece, hold the glass against the LED housing and thread the 30mm threaded cap into the LED housing.  
\*Ensure the rubber o-rings are installed in the correct position, 1 behind the glass, and 1 in-front on the glass. If the glass is not held firmly when the threaded cap is fully screwed in, install an extra o-ring.

## MOUNTING

### Installation Instructions



1. Prep the wall with an hole match the wall plate cutout. Secure the transformer into the wall cavity and feed the cable through the hole into the room. Connect the single electrified cable to the transformer.

2. Screw the mounting plate to the wall using appropriate fasteners for the wall substrate.

3. Fit the circular wall plate over the mounting plate and secure with the supplied M3 grub screw at the bottom of the plate.

\*The transformer needs to be accessible for maintenance purposes.