



CORAL

RING PENDANT (MEDIUM)

Designed and Handmade by Oliver Höglund & Ryan Roberts

Molten hot glass shaped and hand-blown at one thousand degrees cel-sius. Ten flat disc shape made with quality Swedish clear glass.

The free formation design ensures that no two pieces are the same, giving you a truly aesthetic piece for your space.

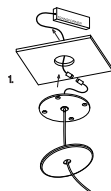
Hand Made in Currumbin, Australia.



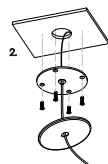
TECHNICAL DATA

Application	Interior Use Only	Input Power	100 - 240VAC
Glass Colour	Frosted / Clear	Output Power Standard	17 - 29V DC (350mA Constant Current) Supplied with Remote Driver
Round Bar Finish	Brass Finish / Matte Black / Matte White / Medium Bronze Powdercoat	Dedicated LED	10 x 1W 350mA (Standard) 10 x 2W 350mA (additional cost) Lifespan - 60,000+ Hours
Cover Cap Finish:	Brass Finish / Matte Black / Matte White / Steel Finish / Medium Bronze Powdercoat	Colour Temperature	2700K / 3000K (standard) / 4000K
Ceiling Mount	Matte White / Matte Black	Dimming	Yes - TRIAC / Phase Dimming (Standard) Dimmable DALI (additional cost)
Suspension	White Cable / Steel Cable / Black Cable	Warranty	24 Months / 2 Years
Suspension Length	1500mm (Or custom length)	Certification	CE / AS/NZS - 60598.2.1
Glass Dimensions	Coral Glass (x10) Width: 150 - 170mm	Weight	8kg
Ring Diameter	800mm		

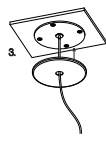
MOUNTING



1 Prep the ceiling with an approx. 50mm hole to fit the transformer. Place the transformer in the ceiling and feed the cable through the hole into the room. Connect the single electrified cable to the transformer.
*The transformer needs to be accessible for maintenance purposes.

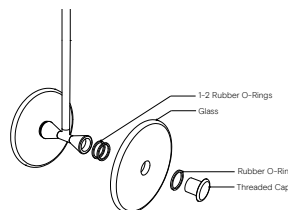


2 Screw the steel mounting plate to the ceiling using appropriate fasteners for the ceiling substrate.



3 Secure the magnetic cover plate onto the mounting plate.
*Push up the metal cable gripper on the mounting plate to adjust the cable length.

Glass Installation



To install the glass piece, hold the glass against the LED housing and thread the 30mm threaded cap into the LED housing.

*Ensure the rubber o-rings are installed in the correct position, 1 behind the glass, and 1 in-front on the glass. If the glass is not held firmly when the threaded cap is fully screwed in, install an extra o-ring.

Dimensions

