



CORAL

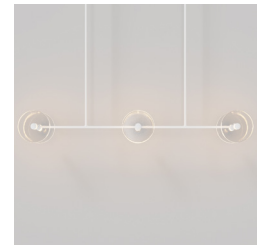
LINEAR ROD PENDANT (x6)

Designed and Handmade by Oliver Höglund & Ryan Roberts

Molten hot glass shaped and hand-blown at one thousand degrees cel-sius. Six flat disc shape made with quality Swedish clear glass.

The free formation design ensures that no two pieces are the same, giving you a truly aesthetic piece for your space.

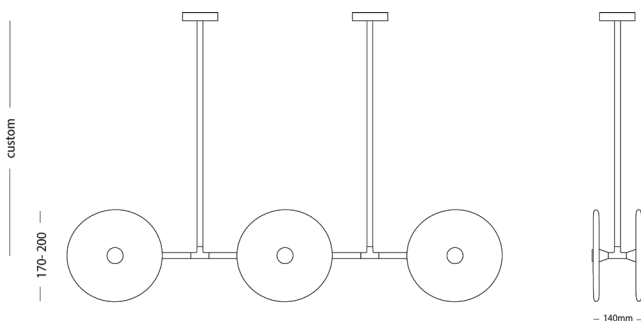
Hand Made in Currumbin, Australia.



TECHNICAL DATA

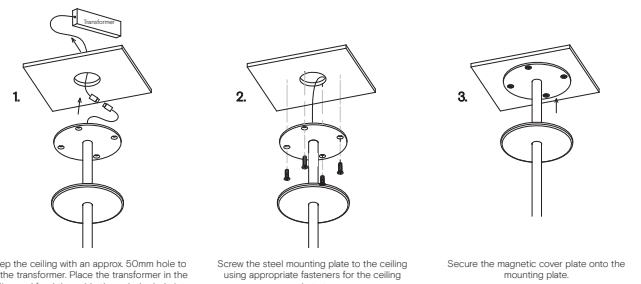
Application	Interior Use Only	Input Power	100 - 240VAC
Glass Colour	Clear / Frosted	Output Voltage (Standard)	17-19V DC Driver (350mA Constant Current) Supplied with Remote Driver
Rod Suspensions	Natural Brass / Matte Black / Matte White / Steel / Finish / Medium Bronze Powdercoat	Dedicated LED	6 x 1W - 350mA (Standard) 6 x 2W - 350mA (additional cost) Lifespan - 60,000+ Hours
Ceiling Canopy	Natural Brass / Matte Black / Matte White / Steel Finish Medium Bronze Powdercoat	Colour Temperature	2700K / 3000K (Standard) / 4000K
Dimensions	Glass Diameter: 170-200mm Glass Thickness: 10-20mm Linear Rod: 1000mm	Dimming	Yes - Dimmable TRIAC/Phase (Standard) Dimmable DALI (additional cost) Please contact for alternative dimming
Measurement between vertical rods	500mm	Warranty	24 Months / 2 Years
		Certification	CE / AS/NZS - 60598.2.1

DIMENSIONS



MOUNTING

Installation Instructions



*The transformer needs to be accessible for maintenance purposes.