



# CORAL

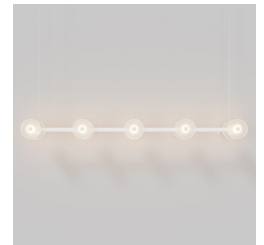
## LINEAR BAR (FROSTED) PENDANT

Designed and Handmade by Oliver Höglund & Ryan Roberts

Molten hot glass shaped and hand-blown at one thousand degrees cel-sius. Ten flat disc shape made with quality Swedish clear glass.

The free formation design ensures that no two pieces are the same, giving you a truly aesthetic piece for your space.

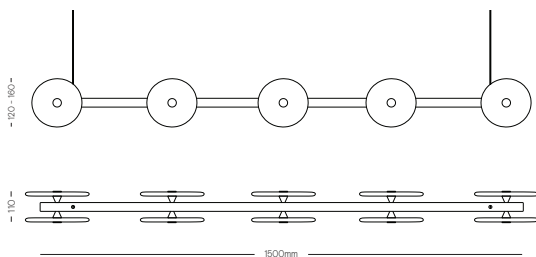
Hand Made in Currumbin, Australia.



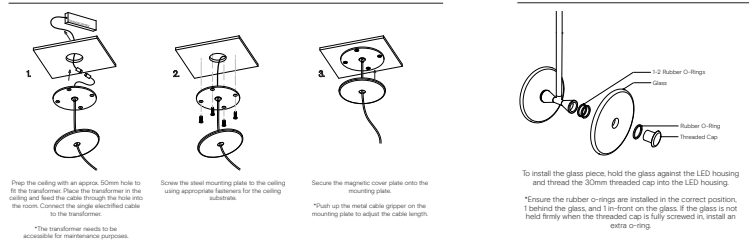
### TECHNICAL DATA

Application	Interior Use Only	Input Power	100 - 240VAC
Glass Colour	Frosted	Output Power Standard	17 - 29V DC (350mA Constant Current) Supplied with Remote Driver
Linear Bar Finish	Matte Black / Matte White / Steel Finish / Brass Finish / Medium Bronze Powdercoat	Dedicated LED	10 x 1W - 350mA (Standard) 10 x 2W - 350mA (additional cost) Lifespan - 60,000+ Hours
Ceiling Mount	Matte White / Matte Black	Colour Temperature	2700K / 3000K (standard) / 4000K
Suspension	Steel Cable / Black Cable / White Cable	Dimming	Yes - TRIAC / Phase Dimming (Standard) DALI Dimmable (additional cost)
Suspension Length	1500mm	Weight	6.0kg
Dimensions	Coral Glass (x10 ) Width: 120 - 160mm  Linear Bar Length: 1500mm Total width - 110mm - 120mm	Warranty	24 Months / 2 Years
Measurement between ceiling mounts - 1330mm		Certification	CE / AS/NZS - 60598.2.1

### DIMENSIONS



### MOUNTING



#### Dimensions

