



CORAL DUO

WALL LIGHT

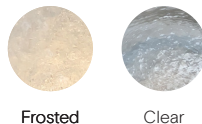
Designed and Handmade by Oliver Höglund & Ryan Roberts

Molten hot glass shaped and hand-blown at one thousand degrees cel-sius. Two flat disc shape made with quality Swedish clear glass.

The free formation design ensures that no two pieces are the same, giving you a truly aesthetic piece for your space.

Hand Made in Currumbin, Australia.

GLASS FINISH



Frosted

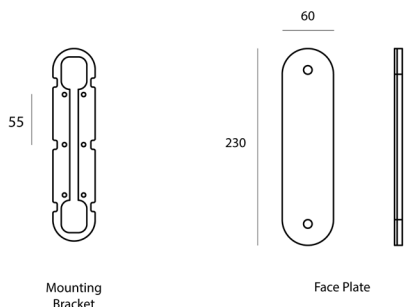
Clear



TECHNICAL DATA

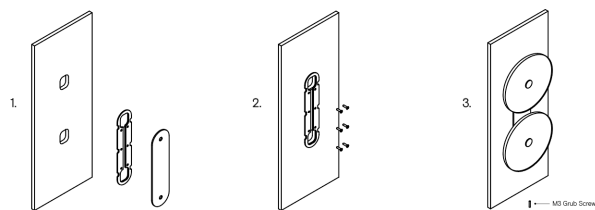
Application	Interior Use (Optional: Outdoor Use) Low Voltage (under 12v)	Input Power	100-240V AC
Glass	Frosted / Clear	Output Power	4V DC Driver (350mA Constant Current) Supplied with Remote Driver
Cover Cap Finish	Matte Black / Matte White / Brass Finish / Steel Finish / Medium Bronze Powdercoat	Dedicated LED	2 x 1W - (Standard) / 2 x 2W (additional cost) Lifespan - 60,000+ Hours
Wall Mount Finish	Matte Black / Matte White / Brass Finish / Steel Finish / Medium Bronze Powdercoat	Colour Temperature	2700K / 3000K (Standard) / 4000K
Glass Dimensions	150 - 170mm Wall Mount: 230 x 60mm Protrudes: 50mm	Dimming	Single-Use-1W LED Dimmable (Standard) DALI (additional cost) Please contact for alternative dimming options
IP Rating	IP20 Indoor	Mounting	Integral Wall Bracket
Warranty	24 Months / 2 Years	Certification	CE / AS/NZS - 60598.2.1

DIMENSIONS



MOUNTING

Installation Instructions



1. Prep the wall with 2 holes to match the wall plate cutouts. Secure the transformer into the wall cavity and feed the cable through the hole into the room. Connect the single electrified cable to the transformer.

2. Screw the mounting plate to the wall using appropriate fasteners for the wall substrate.

3. Fit the face plate (with attached lights) over the mounting plate and secure with the supplied M3 grub screw at the bottom of the plate.

*The transformer needs to be accessible for maintenance purposes.