

Use glaze alone for a translucent effect
over a painted surface.

METALLIC GLAZE*

VIDRIADO METÁLICO*

Use el vidriado solo para crear un efecto traslúcido
sobre una superficie pintada.



Shyness PT-360
Vergüenza PT-360



Compassion PT-110
Compasión PT-110



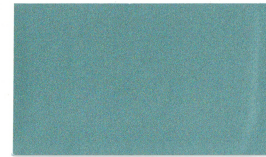
Simplicity PT-160
Simplicidad PT-160



Celestial PT-200
Celestial PT-200



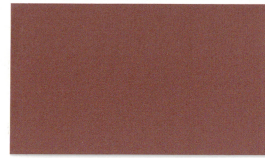
Buttercream Pearl PT-230
Crema de Mantequilla Perlada PT-230



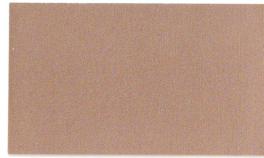
Icy Mist PT-280
Neblina Helada PT-280



Aspen Mist PT-380
Neblina de Aspen PT-380



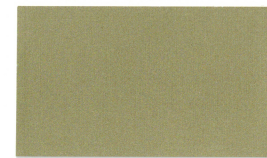
Auspicious Mauve PT-140
Malva Prometedor PT-140



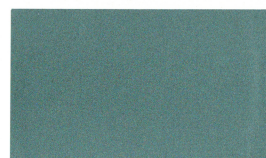
Endearing Pink PT-170
Rosa Atractivo PT-170



Brushed Gold PT-260
Oro Cepillado PT-260



Tulle PT-340
Tul PT-340



Zephyr PT-290
Céfiro PT-290



Liquid Silver PT-100
Plata Líquida PT-100



Persuasion PT-150
Persuasión PT-150



Ribbon Candy PT-180
Cinta de Caramelos PT-180



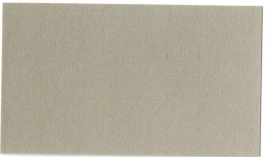
Gold Dust PT-270
Polvo de Oro PT-270



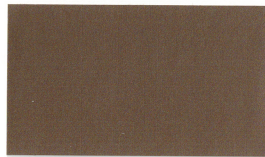
Stillness PT-390
Quietud PT-390



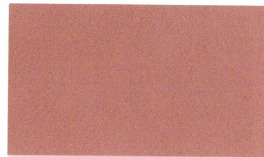
Brushed Radiance PT-300
Resplandor Cepillado PT-300



Veil Cream PT-370
Crema Velo PT-370



Southern Haze PT-210
Bruma Sureña PT-210



Jealousy PT-120
Celos PT-120



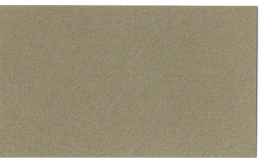
Champagne Dreams PT-240
Sueños de Champagne PT-240



Sea Glass PT-330
Vidrio Marino PT-330



Envy PT-310
Envidia PT-310



Ethereal PT-220
Etéreo PT-220



Meteorite PT-190
Meteorito PT-190



Dazzling PT-130
Resplandeciente PT-130



Fools Gold PT-250
Oro Falso PT-250



Jade Pearl PT-320
Perla de Jade PT-320



Liquid Mercury PT-350
Mercurio Líquido PT-350

*Metallic Glaze is meant to be used as a decorative technique over a painted surface and not as a stand alone opaque finish.

*El objetivo de Metálicos Fundidos es que se use como técnica de decorado sobre una superficie pintada y no como un acabado opaco único.