



INNOVASIA®
ACOUSTICS

VENUESLAT ACOUSTIC SYSTEM Installation Guide



General Installation Guidelines

VenueSlat should be installed by experienced tradesmen having full knowledge of the product and installation procedures. The installation guidelines cataloged in this document are recommended by Innovasia Acoustics but they do not represent a complete reference to existing conditions. Individual tradesman's ability to assess each situation and achieve the desired finished installation is essential. Innovasia presents this guide in good faith to assist relevant installation and accepts no liability for installation actions.

Handling, Storage and Inspection

Products must be stored in a sealed and moistureproof warehouse on a solid, flat and dry surface other than the floor. Direct contact with concrete floor and / or exposure to rain, moisture and sunlight should be avoided in any case. Lay the panels with proper support and protect on all sides with plastic foil against humidity.

At least 24 hours prior to installation, the place of installation must be prepared to have a recommended room temperature of 20°C and a relative humidity of 35% - 65%, exceeding 65% only a few weeks a year. Before installation, the product should be removed from the package and acclimatized for a few days to the temperature and humidity conditions of the premises, under the later terms of use.

After unpacking and before processing, inspect the product thoroughly for any damage or faults. Do not install unacceptable or questionable quality planks. Innovasia will not be responsible for removal or replacement costs of unacceptable products.

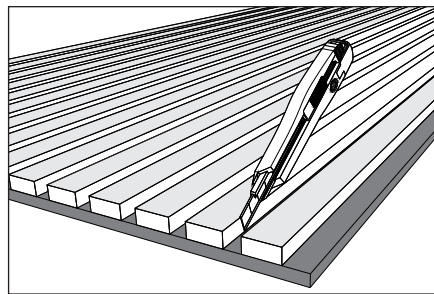
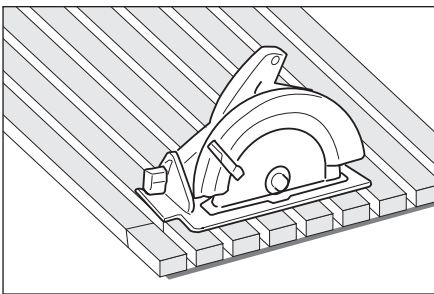
Surface Preparation

Products may be installed on substrates including plywood, plasterboard, concrete and fiber cement so long as they are strong enough to withstand the weight of the panels. Substrate should be dry, flat and even, free from dirt and dust. Concrete ceilings and block walls must be prepared fully. New concrete walls and ceilings must have had sufficient curing time (generally 28 days) to ensure longer life span of the product. Walls must be free of hydrostatic pressure, moisture and excessive alkalinity. In any of these instances, a suitable approved sealer must be first applied and allowed to dry. All dust must be removed by wiping down with wet cloth and allowed to dry thoroughly.

Cutting

Panel dimensions should be checked again prior to installation. Pre-fit each panel before cutting and fixing in place.

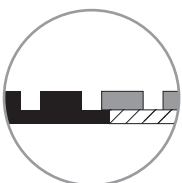
Always cut the short side using a circular saw and the long side using a sharp blade. On the long side only the polyester panel baseboard may be cut and never the wooden slat. To reduce the height of the panel, cut along the short side and to reduce the width of the panel cut along the long side.



Joining the two panels

The lip and recess joint is machined very precisely for seamless installation of two or more panels. Push two adjoining panels together only by hand. In case the lip does not fit the recess neatly, check the recess for any obstructions or residue.

Lip and slat recess



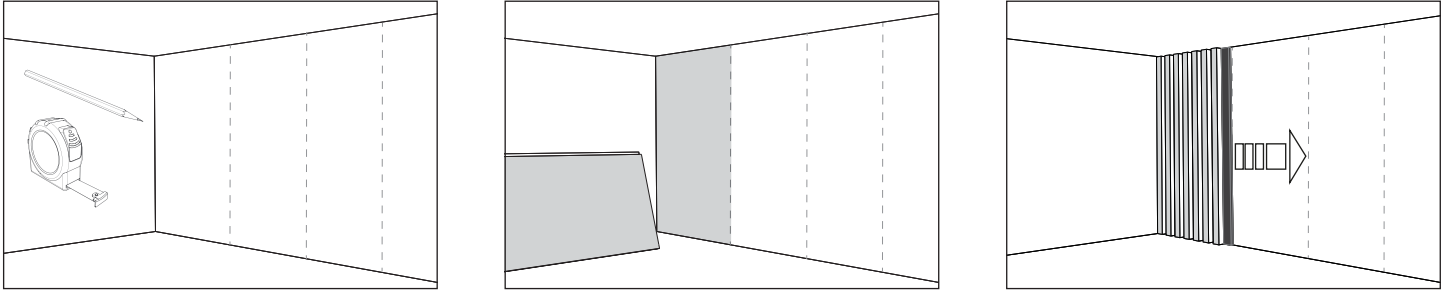
Installation

All dimensions and conditions should be verified on site before commencing installation. VenueSlat may be installed using different methods. The installation instructions for each method have been outlined below. Follow one of the installation methods as appropriate to the conditions of the space.

1. Adhesive Method

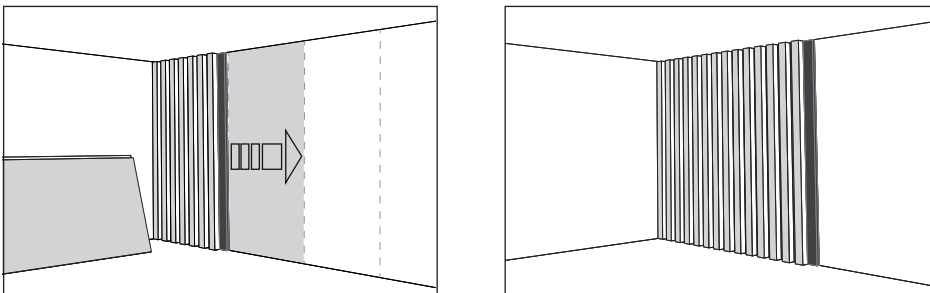
Steps 1 and 2

Measure the wall and mark the placement of the panel on the wall. Apply adhesive with full coverage of the adhesive on the required area. Mount the first panel working from one side of the wall beginning with either the lip or the recess end.



Steps 3, 4 and 5

Apply adhesive for the second panel. Mount the second panel maintaining the same direction as the first panel. Fit the lip and recess properly on the long sides of the two panels before pressing the second panel firmly into place. Repeat for all the panels.

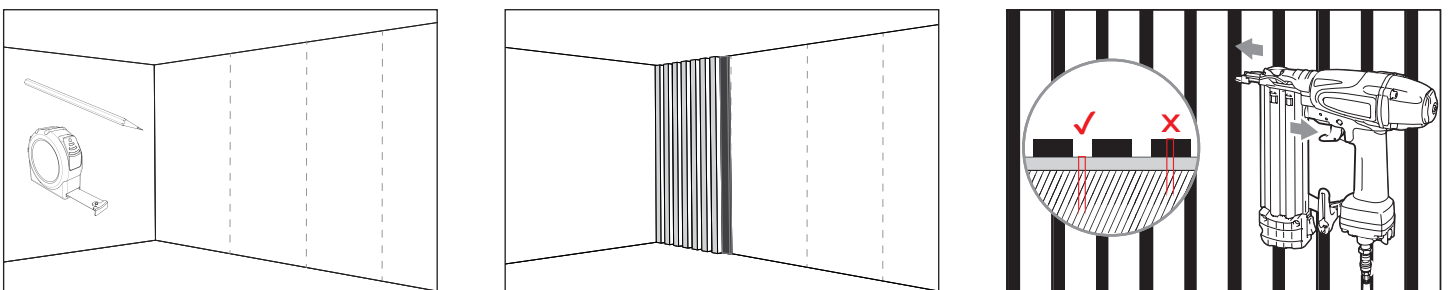


All installation methods described hereafter would need the pre-installation of either plywood backing or wood laths before installing VenueSlat panels.

2. Nail Method

Steps 1, 2 and 3

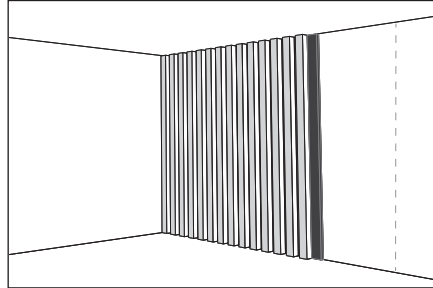
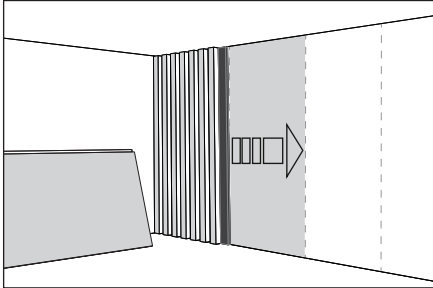
Measure and mark the panel placement on the wall (substrate). Mount the first panel working from one side of the wall beginning with either the lip or the recess end. Fix the panel to the wall using pin nails at regular intervals starting at the top and from the wall end.



Note: Ensure the pin nails are of the right size and can hold the panel in place. Fire the pin nails through the acoustic polyester baseboard and not through the wooden slats.

Steps 3, 4 and 5

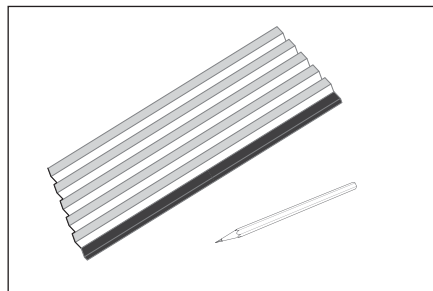
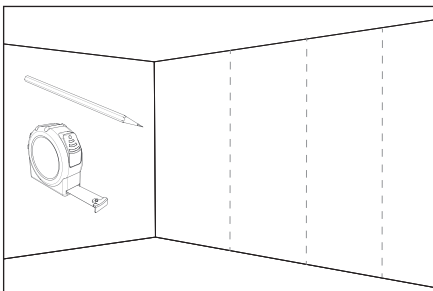
Mount the second panel maintaining the same direction as the first panel. Fit the lip and recess properly on the adjoining long sides of the two panels before firing pins into the second panel. Repeat for all the panels maintaining the same direction for the lip and recess ends as the first panel.



3. Screw Method

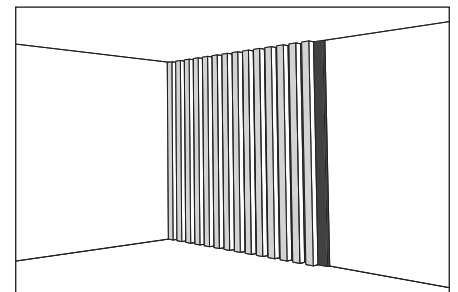
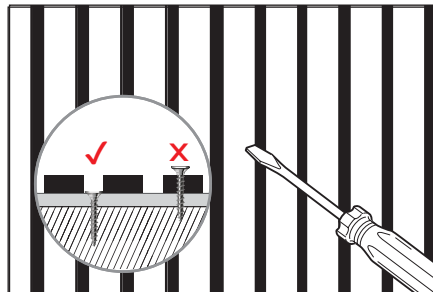
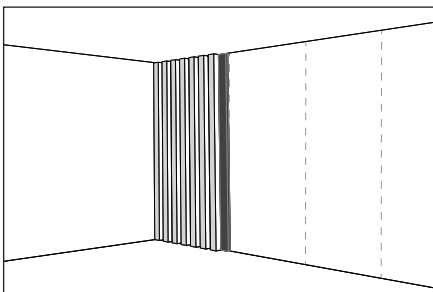
Steps 1 and 2

Measure and mark the panel placement on the wall (substrate). Mark the positions of the screws on the panel maintaining at least 300mm spacing between two screws both vertically and horizontally.



Steps 3, 4 and 5

Mount the first panel working from one side of the wall beginning with either the lip or the recess end. Fix the panel by firing the screws starting at the top and from the wall end. Repeat for all the panels maintaining the same direction for the lip and recess ends as the first panel.

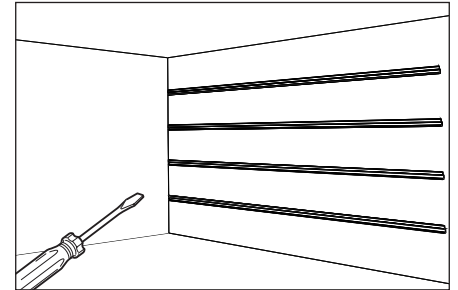
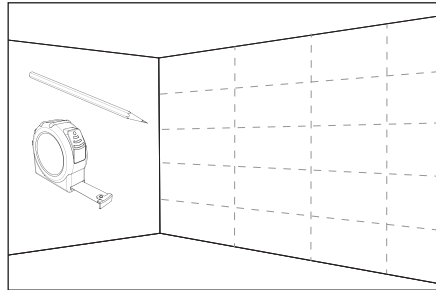
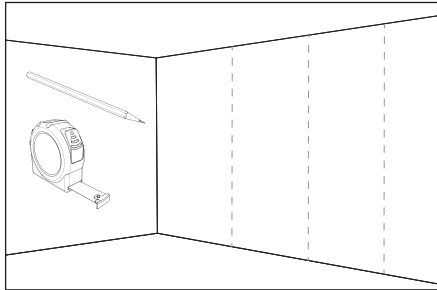


Note: Ensure the screws are of the right size and can hold the panel in place. Fire the screws into the second panel only after the lip and recess are fit properly. Fire the screws through the acoustic polyester baseboard and not through the wooden slat.

Z-Clip Mounting Method

Steps 1, 2 and 3

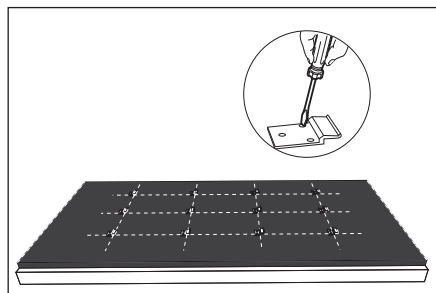
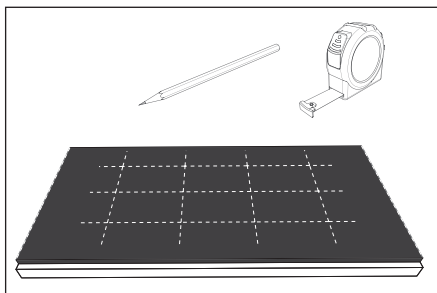
Measure and mark the panel placement on the wall (substrate). Mark the positions of the z-channels with one near the top of the wall, another near the bottom and two in between maintaining equal spacing between the channels. Fix the four z-channels on the substrate.



Steps 4, 5 and 6

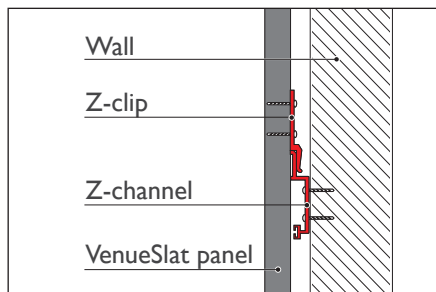
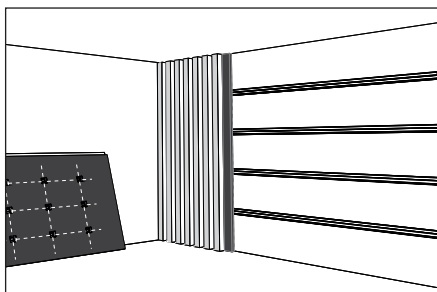
Measure and mark the position of the z-channels on the back of the panel. Measure and mark the positions of the z-clips along the z-channel paths maintaining a spacing of 250mm between two z-clips. Fix the z-clips to the back of the panel.

Note: Ascertain the direction the panel will be mounted (beginning with either the lip or the recess end) and fix the z-clips accordingly.



Steps 7, 8 and 9

Mount the panel working from one side of the wall. Fix the panel to the wall by hooking the z-clips onto the z-channels. Repeat for all the panels maintaining the same direction for the lip and recess ends as the first panel.



Note: Ensure the the z-clips are fixed in the same direction on all the panels.