



INNOVASIA  
ACOUSTICS

# A CUT ABOVE

Architectural Cutting  
for  
Clarity™ Acoustic Panels

## Less is more.

**A CUT ABOVE** collection is an exploration of simplicity.

We took this idea and applied it to the Clarity™ acoustic panel range. The question we asked was, “What can we do to enhance the aesthetic appeal of this product while retaining its high performance and easy-to-use features?” The answer came in the form of 30 clean-lined, v-groove patterns, designed for modularity and creative flexibility.

With **A Cut Above** collection, the magic is in the simplicity of design. Drawing inspiration from everyday geometry, the patterns have been designed to come together effortlessly for limitless combinations and seamless application.

## Flexible

Customers may choose from four Clarity™ platforms in 70 color choices for pattern cutting designed in modular 600 mm x 1200 mm panel sizes for maximum flexibility.

All patterns may be ordered in 1200 mm x 2400 mm sizes upon request. Custom designs are also encouraged.

Contact your Innovasia Acoustics representative or [acoustics@innovasia.com](mailto:acoustics@innovasia.com) for more information.



\*Custom V-Groove Cut Design



# Full Panel Patterns

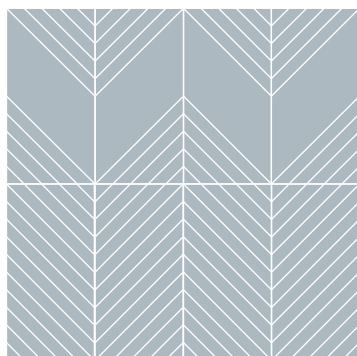
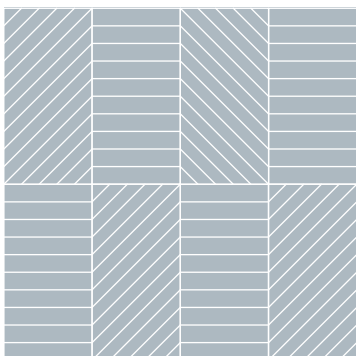
Linear CVCFP-01



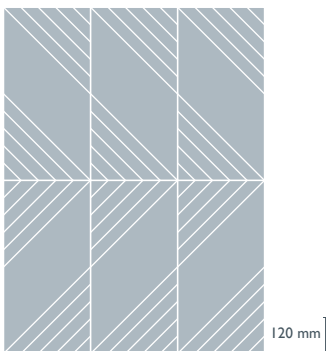
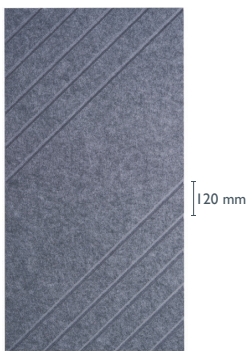
Incline CVCFP-02R



Incline CVCFP-02L



In Parallel CVCFP-03R



In Parallel CVCFP-03L



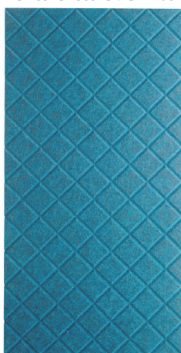


Crosscut CVCFP-04



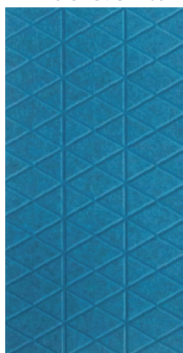
120 mm

Criss-Cross CVCFP-05



120 mm

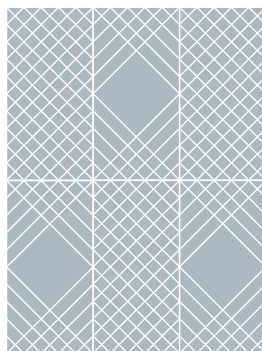
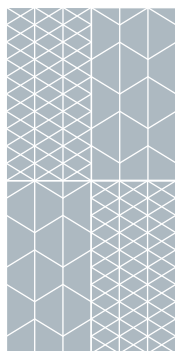
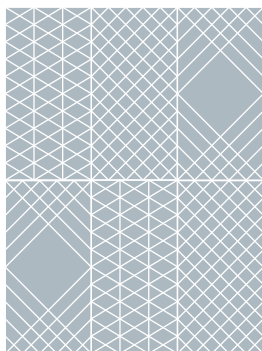
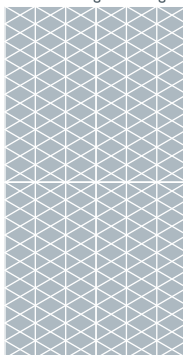
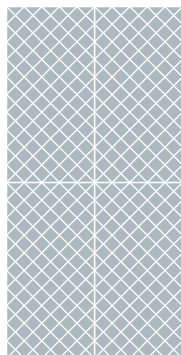
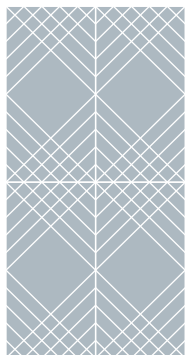
Wicker CVCFP-06



120 mm

200 mm

Long sides have  
v-groove edges



Chevron CVCFP-07L



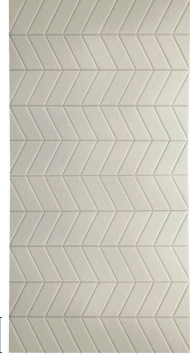
Long sides have v-groove edges  
120 mm

Chevron CVCFP-07R

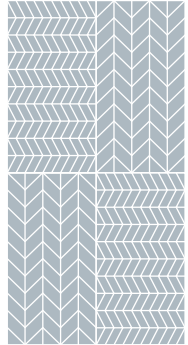
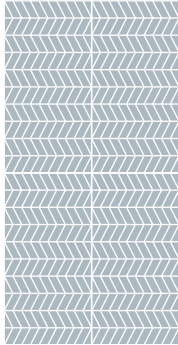


120 mm  
Long sides have v-groove edges

Zigzag CVCFP-08



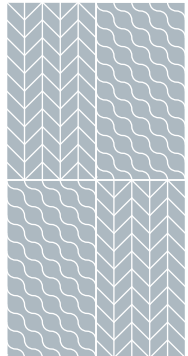
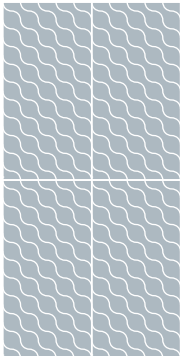
120 mm  
Short sides have v-groove edges  
60 mm



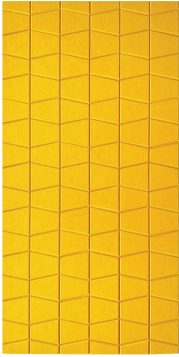
Purl CVCFP-09



120 mm



Trapezia CVCFP-10



Long sides have v-groove edges

50 mm  
100 mm  
25 mm  
100 mm

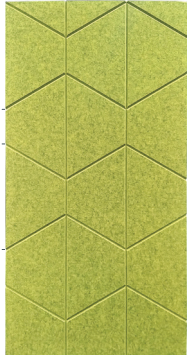
Trapezia Wide CVCFP-11R



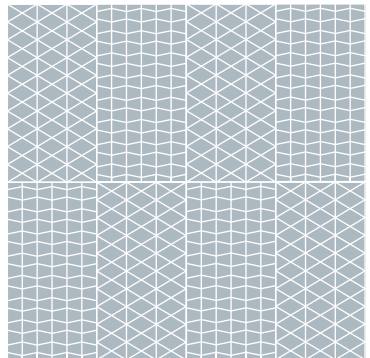
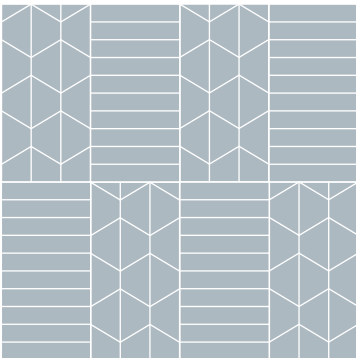
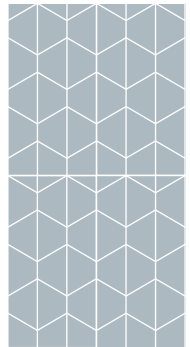
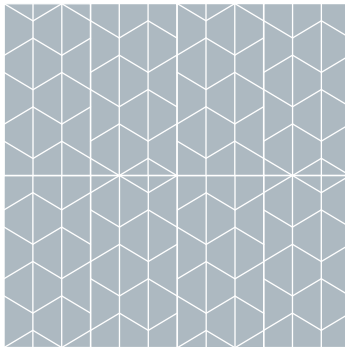
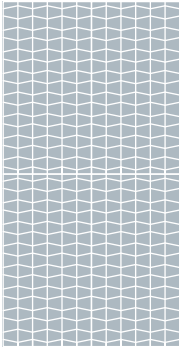
Long sides have v-groove edges

120 mm  
360 mm

Trapezia Wide CVCFP-11L



Long sides have v-groove edges

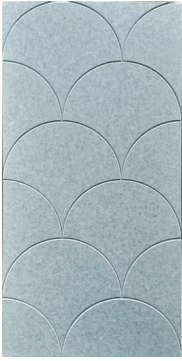


Biloba CVCFP-12



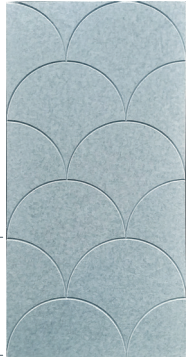
150 mm

Ginkgo CVCFP-13L

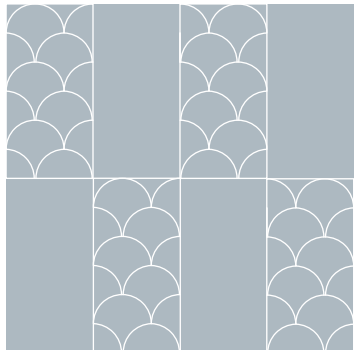
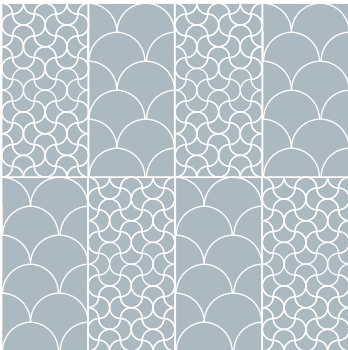
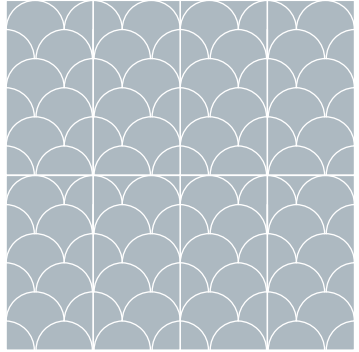
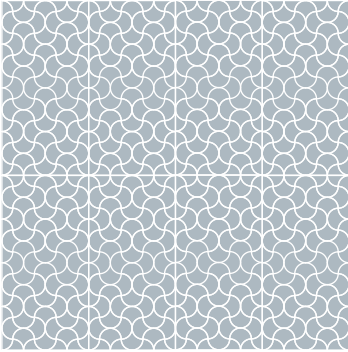


400 mm

Ginkgo CVCFP-13R



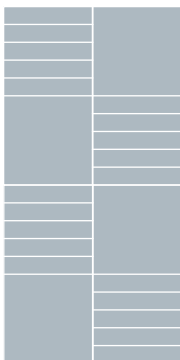
\*Patterns Bilboa and Ginkgo are available on all platforms except Clarity 12.



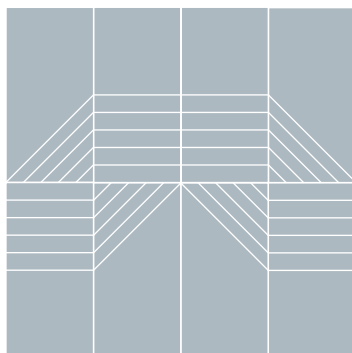
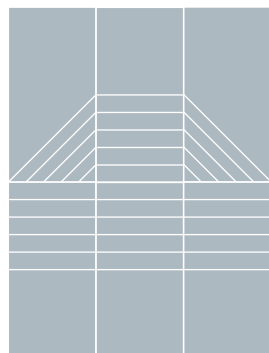
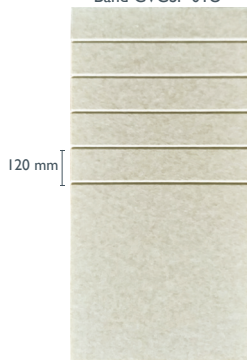


# Semi Panel Patterns

Band CVCSP-01E



Band CVCSP-01U



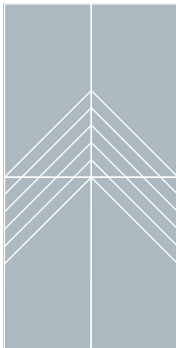
Slope CVCSP-02R



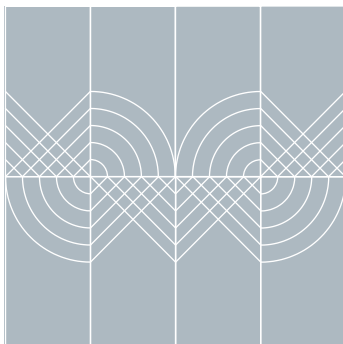
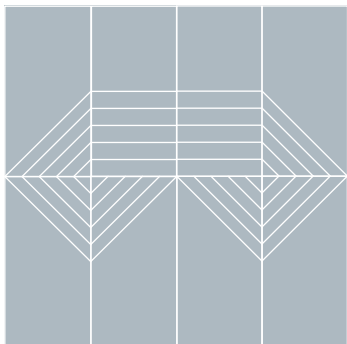
Slope CVCSP-02L



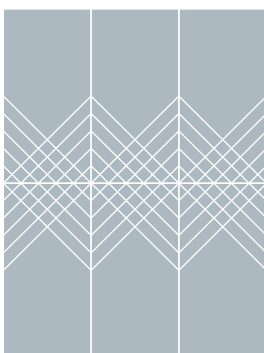
Aslant CVCSP-03R



Aslant CVCSP-03L



Traverse CVCSP-04E



Traverse CVCSP-04U



Resound CVCSP-05L

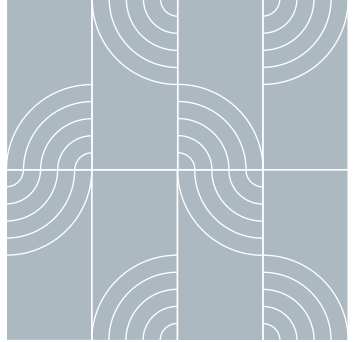
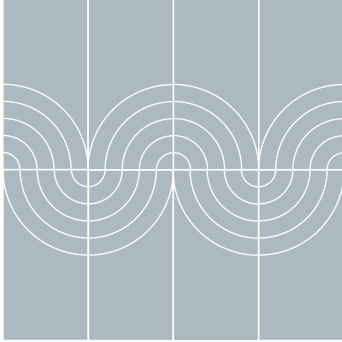
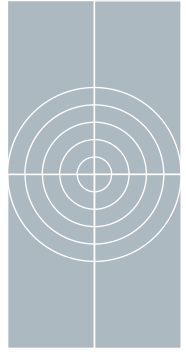


Resound CVCSP-05R

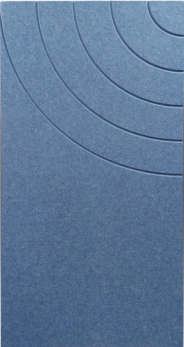


120 mm

120 mm



Echo CVCSP-06L

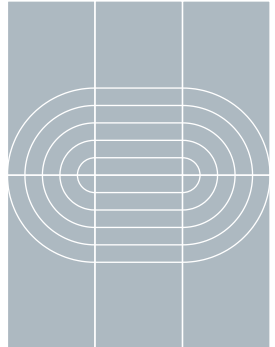


Echo CVCSP-06R



120 mm

120 mm



# Color Options

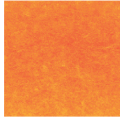
Clarity™



Linen



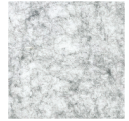
Sunshine



Tangerine



Snow



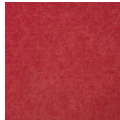
Marble



Flax



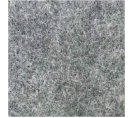
Avocado



Fire



Mist



Pewter



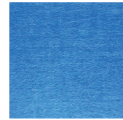
Burlap



Spring



Orchid



Sky



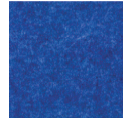
Shadow



Walnut



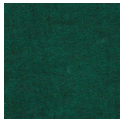
Deep Mauve



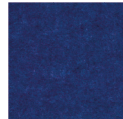
Egyptian Blue



Charcoal



Bottle Green



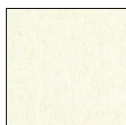
Marine



Black Steel



## Clarity™ Accent



Crème Caramel



Burlap



Mist



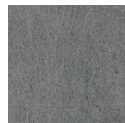
Cloud



Sunshine



Clay



Ash



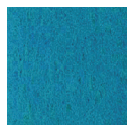
Tangerine



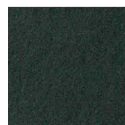
Lava



Peridot



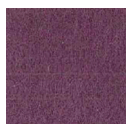
Caspian Sea



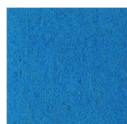
Charcoal



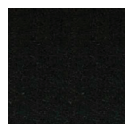
Brick



Plum



Celestial



Sumi

## Clarity™ 12



Alabaster



Chartreuse



Orange



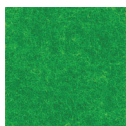
Ultraviolet



Ghost White



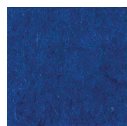
Khaki



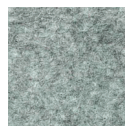
Moss



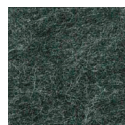
Crimson



Ultramarine



Smoke



Basalt





# Clarity™ I2H



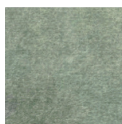
Granite



Ivory



Mustard



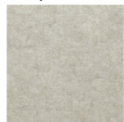
Sage



Frostine



Platinum



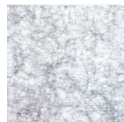
Navajo White



Citrine



Stone Blue



Marble



Stratus



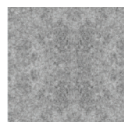
Tan



Peridot



Bay Blue



Smoke



Umber



Rustico



Chartreuse



Concrete



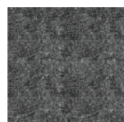
Crimson



Olive



Blueprint



Shadow



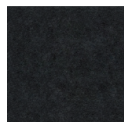
Licorice



Emerald



Delft Blue



Onyx



# Clarity™ Acoustic Panel Platforms

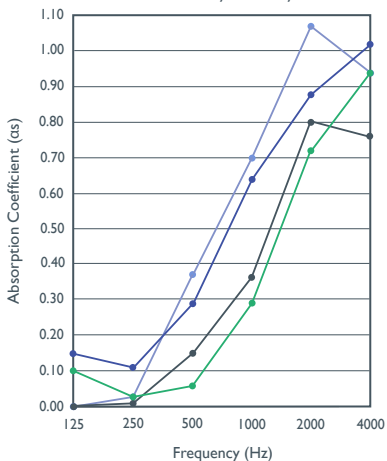
## Product Specifications

Style Name	Clarity™	Clarity™ Accent	Clarity™ 12	Clarity™ 12H
Style Number	1107	1104	1102	1140
Thickness	9 mm	8 mm	12 mm	12 mm
Weight	1900 g/m <sup>2</sup>	2000 g/m <sup>2</sup>	2180 g/m <sup>2</sup>	2400 g/m <sup>2</sup>
	5655 g/panel	5954 g/panel	6500 g/panel	8000 g/panel
Content	60% Recycled Polyester, 40% Polyester			
Dimensions	1220 mm x 2440 mm (± 10 mm)			
	Clarity™ 12H: 1200 mm x 2800 mm (± 10 mm)			

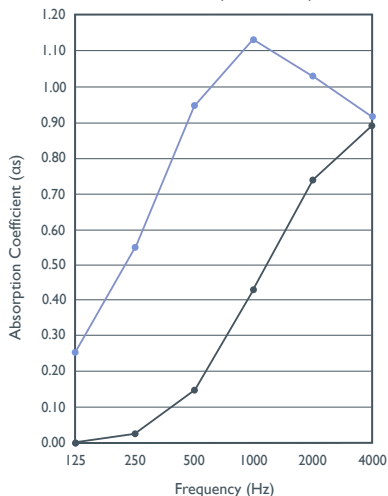
## Noise Reduction Coefficient

ASTM	NRC 0.35	NRC 0.30	NRC 0.35	NRC 0.35
C423-09a	NRC 0.55	NRC 0.50	NRC 0.90	NRC 0.90
	(with 25 mm air gap)		(with 25 mm glass wool infill)	

ASTM C423 - Clarity™ & Clarity™ Accent



ASTM C423 - Clarity™ 12 & Clarity™ 12H



Frequency (Hz)	125	250	500	1000	2000	4000	NRC
9 mm Clarity™	0.00	0.01	0.15	0.36	0.80	0.76	0.35
9 mm Clarity™ with 25 mm air gap	0.00	0.03	0.37	0.70	1.07	0.94	0.55
8 mm Clarity™ Accent	0.10	0.03	0.06	0.29	0.72	0.86	0.30
8 mm Clarity™ Accent with 25 mm air gap	0.15	0.11	0.29	0.64	0.88	1.02	0.50

Frequency (Hz)	125	250	500	1000	2000	4000	NRC
Clarity™ 12	0.00	0.03	0.15	0.43	0.74	0.89	0.35
Clarity™ 12 with 25 mm glass wool	0.25	0.55	0.95	1.13	1.03	0.92	0.90



# CONTACT US

For inquiries, please contact your local distributor below or email us at [acoustics@innovasia.com](mailto:acoustics@innovasia.com).

## CHINA

Innovasia (Hangzhou) Co., Ltd.  
Suite 402, Building L, Taijia Plaza  
972 Mo Gan Shan Road  
Hangzhou, Zhejiang, China 31000  
Phone: (86) 571-2829-5886

## JAPAN

Innovasia K.K.  
4th Floor, Prosper Building  
1-3-3 Iwamoto-cho  
Chiyoda-ku, Tokyo, Japan 101-0032  
Phone: (81) 3 5209-7090

## SINGAPORE

Innovasia Singapore Pte. Ltd.  
315 Outram Road #12-06  
Tan Boon Liat Building  
Singapore 169074  
Phone: (65) 6744-4113

## HONG KONG

Innovasia (Hong Kong) Ltd.  
3/F, Lok's Industrial Building  
204 Tsat Tze Mui Road  
Quarry Bay, Hong Kong, S.A.R.  
Phone: (852) 2264-6334

## MALAYSIA

Innovasia Fabrics Sdn. Bhd.  
No. 7, Jalan U11/32  
Hicom Glenmarie Industrial Park  
40000 Shah Alam, Selangor, Malaysia  
Phone: (603) 5569-5108

## THAILAND

Innovasia Textile (Thailand) Co., Ltd.  
1999/21 Siwara, Soi Ladphrao 94 (Panchamit)  
Khwang/Khet Wangthonglang  
Bangkok, Thailand 10310  
Phone: (66) 2530 9304-7

## USA

Innovasia, Inc.  
3457 Ringsby Court, Unit 106  
Denver, Colorado 80216  
United States  
Phone: (770) 953-1511  
[www.innovasia.com](http://www.innovasia.com)

## COSTA RICA

Designbox by Innovasia  
Oficentro Trivium, Local #1  
Guachipelin, Escazu, San Jose  
Costa Rica  
Phone: (506) 4702-9001  
[www.designbox.net](http://www.designbox.net)



# INNOVASIA

ACOUSTICS

[www.innovasia.com](http://www.innovasia.com)