

## COMPOSITION OF THE PANEL

- Aluminium frame with straight or round-angled corners
- Acoustic absorber
- Cover in 3D fabric (with closing system at the back)

## FABRIC

**Composition:** Woven in a mixture of 30% merino wool, 29% virgin wool, 24% polyester, 16% cotton and 1% elastane.

## REACTION TO FIRE

Treatment possible

## ACOUSTIC PERFORMANCE

Class A acoustic rating -  $\alpha_w$  0.90

## PANEL TECHNICAL DETAILS

- Simple system of covers easily removable for cleaning and replacement
- Thickness of the panel 60 mm – mounted 65 mm
- Sizes and shapes customisable: Irregular, triangle, round sides, L-shape to cover corners
- Power sockets and screens integratable
- All fixing systems available (wall, ceiling, suspended, standing)

## MAINTENANCE INSTRUCTIONS

### 1. General maintenance and preventive measures

**Mounting:** Please use textile gloves to protect the fabric from stains.

**Vacuum regularly:** We advise regular dusting and vacuum cleaning with a smooth mouthpiece and never with the vacuum bristles showing.

### 2. Total cleaning of the fabric

For complete cleaning, specialized companies in upholstery cleaning are advisable. The fabric can be easily removed from the panel for this purpose.

## DESIGN & COLOURS

The Cello collection contains 1 design and 9 colours.

**Colour differences:** slight colour differences between yarn batches are characteristic of dyeing natural materials and consequently can not be valid grounds for complaints.

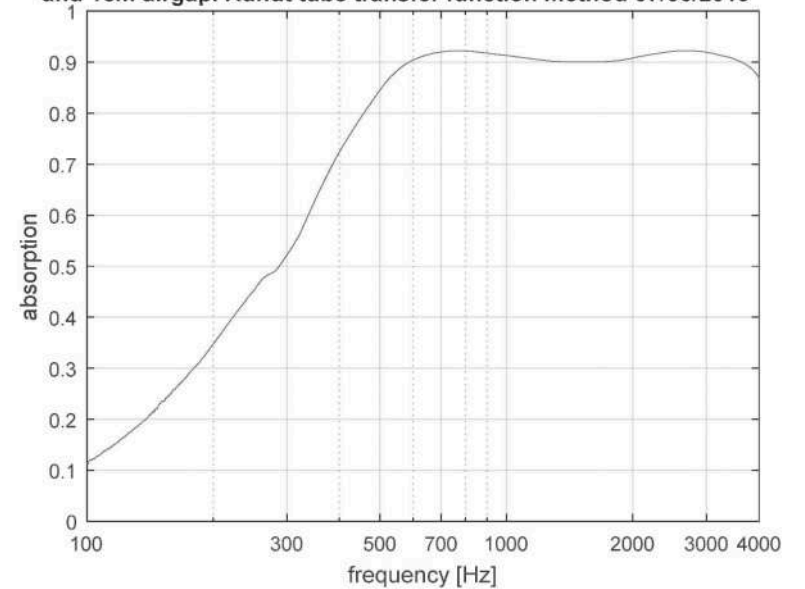
## ENVIRONMENT

Oeko-Tex ® standard 100.

All chemicals used are registered under the REACH legislation.

The acoustic panels can be easily disassembled and the parts are recyclable.

**absorption for Casalis Cello fabric with mineral wool medium hardness and 1cm airgap. Kundt tube transfer function method 07/06/2019**



# /CELLO COLOURS



anthracite



beige



black



camel



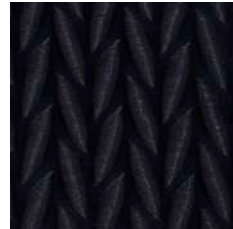
creme



light grey



medium grey

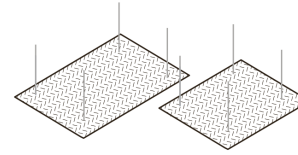


navy

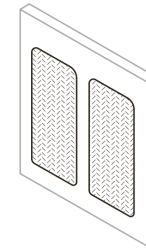


taupe

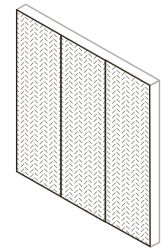
# /SHAPES



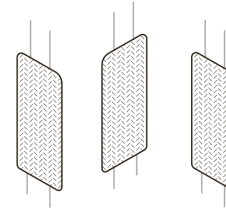
suspended horizontal panel



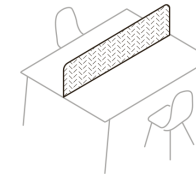
wall panel



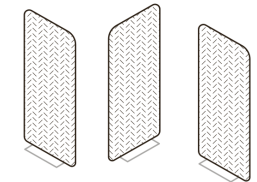
full wall panel



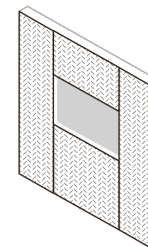
suspended room divider



office divider



standing room divider



custom made panel