

**Power Dongle for Apple Watch User Manual**

## Contents

Package Contents .....	1
Features .....	2
Specs.....	2
Quick Guide.....	3
Warranty .....	9
Exclusions & Limitations .....	10
Important .....	11
Customer Service .....	11
Legal .....	12
FCC WARNING .....	13

Thank you for purchasing the Power Dongle for Apple Watch.

## Package Contents

Power Dongle for  
Apple Watch x 1



Document Kit x 1



## Features

- MFI-certified.
- 5W charging speeds.
- Can use with any USB-C port.
- Compatible with all Apple Watch models.
- Magnetic wireless charging.
- Built-in safety features, including overvoltage and overcurrent protection, overpower and short circuit protection, and electromagnetic field blocking.

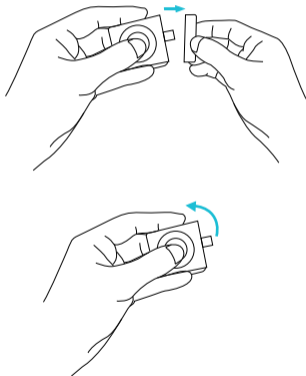
## Specs

Detail	Specifications
Width	1.56in (39.8mm)
Length	2.2in (56mm)
Height/Depth	0.4in (10.4mm)
Wireless Speed	5W
Type C Port(Input)	DC 5V/1A
Operating Temperature	-10-30 C
Storage Temperature	-20-60 C

## Quick Guide

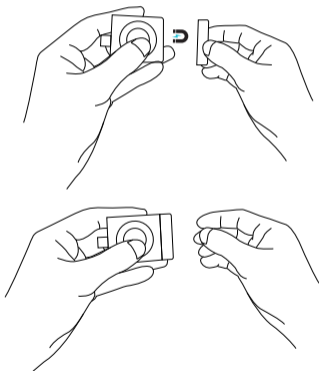
1. Remove the lid.

打开顶盖



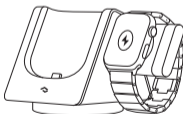
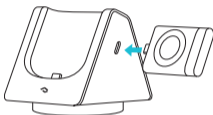
2. Magnetically attach the lid to the end of the dongle.

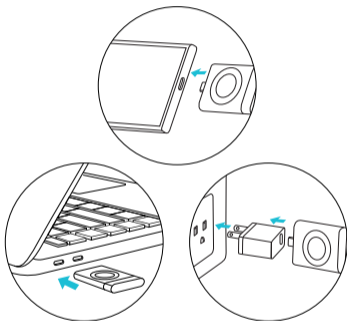
翻转顶盖吸附在基座尾部



3. Insert the dongle into the USB-C port.

将充电底座插入USB-C充电口







\*Scan QR code for video instruction.



扫码查看操作视频

Scan QR Code Below for Full User Manual

Scannen Sie dem unten QR-Code nach der  
vollständigen Gebrauchsanleitung

下の QR コードをスキャンして完全なユーザマニュアルをご覧ください

Scanner le code QR ci-dessous pour le mode d'emploi complet

扫描下方二维码查看用户手册

Отсканируйте QR-код для просмотра полной инструкции



## **Warranty**

At PITAKA, we are always striving to provide our customers with the best quality products. The PITAKA Power Dongle for Apple Watch is guaranteed for 12 months from the date of purchase. The Power Dongle for Apple Watch is warranted to be free of defects in materials and function under normal use. A defect is defined as an imperfection or flaw during the manufacturing process. The warranty is non-transferable and covers the original end-user purchaser. PITAKA will only authorize the warranty claim if the products were purchased from an official store or an authorized dealer. For full details regarding warranty terms and exclusions, please visit [ipitaka.com/pages/shipping-warranty](https://ipitaka.com/pages/shipping-warranty).

## **Exclusions & Limitations**

Except for the limited warranty expressly set forth or to the extent restricted or prohibited by applicable law, PITAKA expressly disclaims any other warranties express or implied, including any warranty of quality, merchantability, or fitness for a particular purpose, and you specifically agree that PITAKA shall not be liable for any special, incidental, indirect, punitive, or consequential damages of any type on any PITAKA product. In addition to and without limiting the generality of the foregoing disclaimers, the limited warranty does not, under any circumstances, cover the replacement or cost of any electronic device or personal property inside or outside of the PITAKA product.

## **Important**

- Keep out of direct sunlight.
- Do not immerse in liquid.
- Operating temperature 14°F - 86°F (-10 - 30 °C)
- Storage temperature -4°F - 140°F (-20 - 60 °C)
- Operating humidity 45-85% Relative humidity
- Storage humidity 30-90% Relative humidity
- Do not disassemble or replace any part of the Power Dongle for Apple Watch
- Only use a safety-certified charger or product to power this product.
- Do not place any foreign objects between the watch and the wireless charger to avoid affecting charging performance

## **Customer Service**

Tel: +852 9202 6223

Email: [support@ipitaka.com](mailto:support@ipitaka.com)

Web: [www.ipitaka.com](http://www.ipitaka.com)

## Legal

The manufacturer is not responsible for any damages to any device incurred through the use of this product. The manufacturer shall not, in any way, be liable to you or to any third party for any damages you or any third party may suffer as a result of use, intended or unintended, or misuse of this product in conjunction with any device or accessory other than the appropriate device for which this product is designed. The manufacturer will not be responsible for any damages you or any third party may suffer as a result of the misuse of this product as outlined above. The purchaser agrees to defend, indemnify, and hold the manufacturer harmless for any claims or damages arising from unintended use or misuse, including use with an unintended device.

**Radio frequency range:** 110-205 kHz

**Radio frequency range (watch):** 326.5 kHz Max.

**RF power transmitted:** 23.19 dBμA/m @3m distance

**Max. RF power transmitted (watch):** 2.25 dBμA/m @3m distance

Manufacturer; Luxshare Precision Industry Co., Ltd, Floor 2,  
Block A, Sanyo New Industrial Area, West Haoyi Community,  
Shajing Subdistrict Office, Bao'an District, Shenzhen, P. R. China

# FCC WARNING

This device complies with part 15 of the FCC Rules. Operation is subject to the following two conditions: (1) this device may not cause harmful interference, and (2) this device must accept any interference received, including interference that may cause undesired operation.

Any changes or modifications not expressly approved by the party responsible for compliance could void the user's authority to operate the equipment.

NOTE: This equipment has been tested and found to comply with the limits for a Class B digital device, pursuant to Part 15 of the FCC Rules. These limits are designed to provide reasonable protection against harmful interference in a residential installation. This equipment generates, uses and can radiate radio frequency energy and, if not installed and used in accordance with the instructions, may cause harmful interference to radio communications. However, there is no guarantee that interference will not occur in a particular installation.

If this equipment does cause harmful interference to radio or television reception, which can be determined by turning the equipment off and on, the user is encouraged to try to correct the interference by one or more of the following measures:

- Reorient or relocate the receiving antenna.
- Increase the separation between the equipment and receiver.
- Connect the equipment into an outlet on a circuit different from that to which the receiver is connected.
- Consult the dealer or an experienced radio/TV technician for help.

### **FCC RF Radiation Exposure Statement**

This equipment complies with FCC RF radiation exposure limits set forth for an uncontrolled environment. This device and its antenna must not be co-located or operating in conjunction with any other antenna or transmitter. "To comply with FCC RF exposure compliance requirements, this grant is applicable to only Mobile Configurations. The antennas used for this transmitter must be installed to provide a separation distance of at least 20 cm from all persons and must not be co-located or operating in conjunction with any other antenna or transmitter."

FCC ID: 2AYYS-PDAW01

