

**MagEZ Slider 2 & Power Dongle
for Apple Watch User Manual**

Contents

Package Contents	2
Features	3
Compatibility	5
Specs	6
Quick Guide	9
Buttons & LED Indicators	26
FAQ	27
Warranty	28
Exclusions & Limitations	29
Important	30
Customer Service	32
Legal	32

Thank you for purchasing the MagEZ Slider.

Package Contents

1. MagEZ Slider 2 Dock *1
2. MagEZ Battery Pack 2 *1
3. Magnetic Earbuds Stand *1
4. Power Dongle for Apple Watch*1
5. 1m USB-C Cable*1
6. Document Kit*1



①



②



③



④



⑤



⑥

Features

MagEZ Slider

- Charges the power bank, smartphone, Qi-enabled earbuds, and plug-in Type-C dongle.
- A 4000mAh magnetic power bank that charges at 5W/7.5W.
- A magnetic, adjustable wireless charging stand for earbuds.
- USB-C port for a 5W Apple Watch charging dongle.
- MagSafe compatible – attach an iPhone 12/13/14 with or without a MagSafe case and Galaxy S22/23 using a MagSafe case.
- Compact and ergonomic design.
- 360° rotating dock that can be fixed.
- Pass-through charging - charge your smartphone and Battery Pack simultaneously.
- A re-usable gel pad allows you to relocate the dock. Make sure you put the dock on a flat surface, and mind that pulling it up might cause peeling paint, if any.

- Built-in safety features, including overvoltage and overcurrent protection, overpower and short circuit protection, and electromagnetic field blocking.
- LED lights indicate charging status.
- The Battery Pack will double vibrate when its power drops below 10%.

Power Dongle for Apple Watch

- MFi-certified
- 5W charging speeds
- Can use with any USB-C port
- Compatible with all Apple Watch models
- Magnetic wireless charging
- Built-in safety features, including overvoltage and overcurrent protection, overpower and short circuit protection, and electromagnetic field blocking.

Compatibility

- Compatible with iPhone 12/13/14 series without a case or with a MagSafe case and Samsung Galaxy S22/S23 Series with a MagEZ Case 2/3.
- Charges Qi wireless charging earbuds including AirPods, Samsung Galaxy Buds R170 and Galaxy Buds Pro R190
- Charges all Apple Watch models.

*We cannot guarantee magnetic attachment to all 3rd party cases with MagSafe compatibility.

Specs

MagEZ Slider

Detail	Specification	
	MagEZ Slider Dock 2	MagEZ Battery Pack 2
Width	76.7mm	62mm
Length	90.6mm	97.3mm
Height/Depth	112mm	14.2mm
Battery Capacity	4000mAh	
Power Type C Port (Input)	DC 9V/2.22A	
Battery Pack Type C Port (Input)	DC 5V/2A	
Battery Pack Type C Port (Input During Wireless Charging)	DC 5V/2A	
Battery Pack Type C Port Output	DC 5V/2A	
Type C Port for Dongle Output	DC 5V/1A	
Wireless Output	5W	7.5W

AirPods Wireless Output	5W
Transmission Distance	≤ 6mm
Transmission Efficiency	≤ 75%
Operating Temperature	0-30°C
Storage Temperature	-20-60°C

Requires a PD 20W Type-C charger.

Power Dongle for Apple Watch

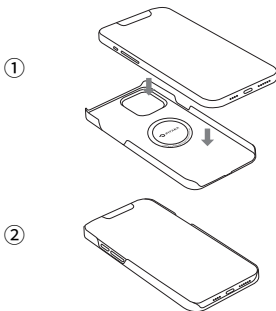
Detail	Specification
Width	1.56in (39.8mm)
Length	2.2in (56mm)
Height/Depth	0.4in (10.4mm)
Wireless Speed	5W

Type C Port (Input)	DC 5V/1A
Type C Port (Output)	DC 5V/1A
Operating Temperature	-10-30°C
Storage Temperature	-20-60°C

Quick Guide

- Preparing Your Phone

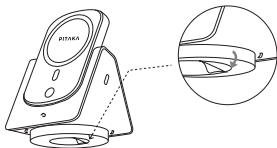
1. Install your MagEZ Case 2/3 for iPhone 13/14, Galaxy S22/S23.



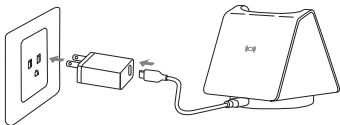
2. Or use your iPhone 13/14 with or without a MagSafe Case.

- **Setting Up MagEZ Slider 2**

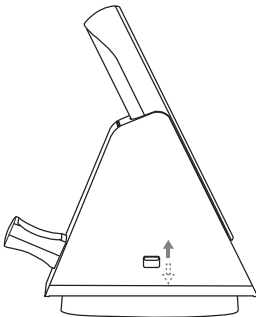
1. Clean and dry your work surface. Peel off the base's protective film before placement.



2. Plug in the MagEZ Slider 2 using a 20W power adapter and cable.



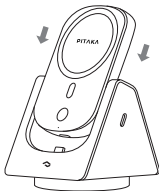
3. When the switch is turned up, spin the dock to adjust angle. Or turn it down to fix the dock.



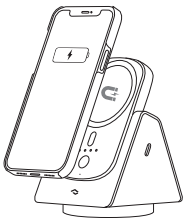
MagEZ Slider Dock

- Charging Your Phone

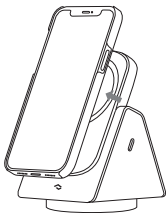
1. Slide the MagEZ Battery Pack into the dock.



2. Attach your phone to charge.

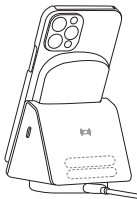


3. Remove your phone to leave the power bank in the dock.

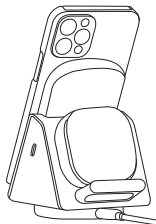
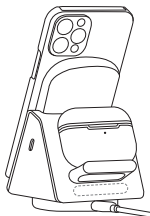


• Charging Your AirPods or Other Qi Earbuds

1. Adjust the magnetic stand depending on the size of your AirPods wireless charging case.



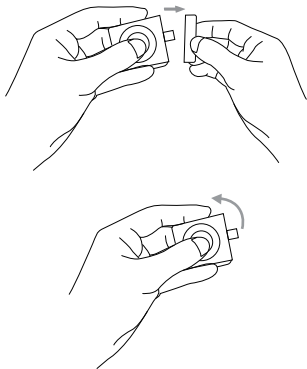
2. Put your Earbuds on the stand to charge it horizontally or vertically.



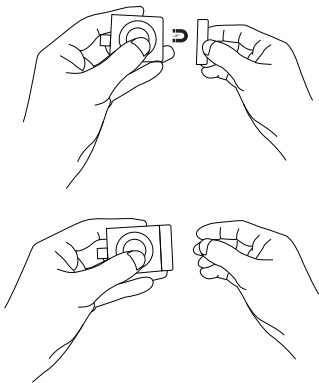
Power Dongle for Apple Watch

- Charging Your Apple Watch

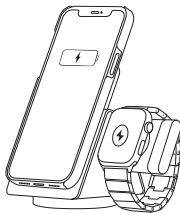
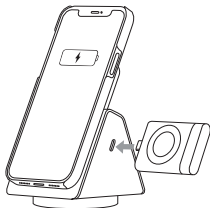
1. Remove the lid.



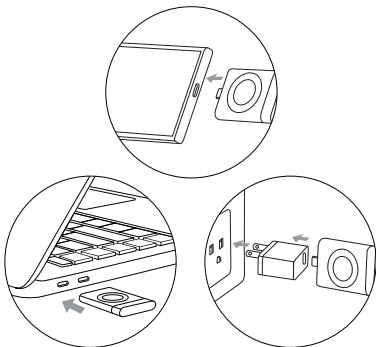
2. Magnetically attach the lid to the end of the dongle.



3. Insert the dongle into the MagEZ Slider USB-C port.



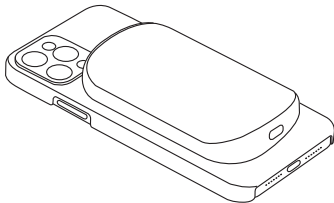
4. Plug the Dongle into any powered USB-C port to charge your Apple Watch. For example:



MagEZ Battery Pack 2

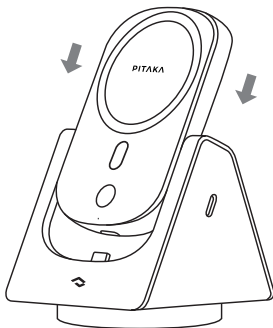
- Charging Your Phone

1. Attach the MagEZ Battery Pack to the back of your iPhone 12/13/14 (using a MagSafe case or not).

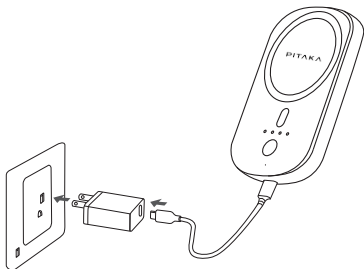


- **Charging the MagEZ Battery Pack**

1. Slide it into the MagEZ Slider Dock that's connected to power.

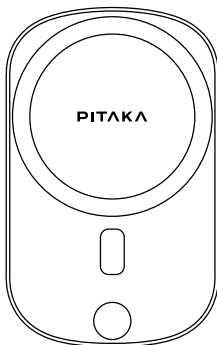


2. Or connect it to a power adapter via the Type-C port and plug the adapter into the electrical socket.



- **Buttons & LED Indicators**

1. Click the power button once on the MagEZ Battery Pack to see the battery charging level and activate wireless charging. If no device is placed on the charging area, wireless charging will power down after 40 seconds.



2. Double click the power button on the MagEZ Battery Pack to turn off wireless charging.



3. When the battery level is lower than 10%, the MagEZ Battery Pack will vibrate twice to remind you of low battery. When the battery level is between 1~10%, the power bank will vibrate twice every time you press the power button.

Tips: Based on various scenarios, a 10% battery means the MagEZ Battery Pack can charge your phone for about 10 to 20 minutes.

Note:

1. The Type-C port on MagEZ Battery Pack is used for input and output.

2. MagEZ Battery Pack has built-in safety features, including overvoltage and overcurrent protection, overpower and short circuit protection, and electromagnetic field blocking.



*Scan QR code for video instruction.



扫码查看操作视频

Buttons & LED Indicators

Click the button on the MagEZ Battery Pack to see the battery charging level.

When clicking the button once, the LEDs will light up as shown below:

Battery Percentage Indicator

- When the MagEZ Battery Pack is plugged in, the LED indicators will light up and blink based on the remaining battery.
- When charging your phone with the MagEZ Battery Pack, the LED indicators will light up based on the remaining battery.

If no device is placed on the charging area, wireless charging will power down after 40 seconds.

Double click the button on the MagEZ Battery Pack to turn off wireless charging.

FAQ

1. Is MagEZ Slider 2 compatible with power banks from MagEZ Juice 1/2?

- Both power banks from MagEZ Juice 1/2 are compatible with MagEZ Slider 2

2. Which devices and cases are compatible with MagEZ Battery Pack?

- MagEZ Battery Pack can attach to iPhone 12/13/14 series with or without a MagSafe Case (including MagEZ Case 2/3 from PITAKA) and Galaxy S22/23 with a MagEZ Case 2/3.

*We cannot guarantee magnetic attachment to all 3rd party cases with MagSafe compatibility.

Warranty

At PITAKA, we are always striving to provide our customers with the best quality products. The PITAKA MagEZ Slider 2 and Power Dongle for Apple Watch are guaranteed for 12 months from the date of purchase. Both items are warranted to be free of defects in materials and function under normal use. A defect is defined as an imperfection or flaw during the manufacturing process. The warranty is non-transferable and covers the original end-user purchaser. PITAKA will only authorize the warranty claim if the products were purchased from an official store or an authorized dealer. For full details regarding warranty terms and exclusions, please visit ipitaka.com/pages/shipping-warranty.

Exclusions & Limitations

Except for the limited warranty expressly set forth or to the extent restricted or prohibited by applicable law, PITAKA expressly disclaims any other warranties express or implied, including any warranty of quality, merchantability, or fitness for a particular purpose, and you specifically agree that PITAKA shall not be liable for any special, incidental, indirect, punitive, or consequential damages of any type on any PITAKA product. In addition to and without limiting the generality of the foregoing disclaimers, the limited warranty does not, under any circumstances, cover the replacement or cost of any electronic device or personal property inside or outside of the PITAKA product.

Important

- Keep out of direct sunlight.
- Do not immerse in liquid.
- Operating Temperature 14°F - 86°F (-10 - 30 °C).
- Storage Temperature -4°F - 140°F (-20 - 60 °C).
- Operating Humidity 45-85% Relative Humidity.
- Storage Humidity 30-90% Relative Humidity.
- Do not disassemble or replace any part of the MagEZ Slider.
- Only use the Type C PD 30W charger to power the MagEZ Slider.
- Do not place any foreign objects between MagEZ Slider and the mobile phone, so as not to affect the charging performance of the product.

- Do not burn the wireless power bank or throw the wireless power bank into a fire, as it may cause an explosion.
- Do not discard the wireless power bank in an ordinary garbage bin.
- The product should be charged once every 3 months during storage.

Customer Service

Tel: +852 9202 6223

Email: support@ipitaka.com

Web: www.ipitaka.com

Legal

The manufacturer is not responsible for any damages to any device incurred through the use of this product. The manufacturer shall not, in any way, be liable to you or to any third party for any damages you or any third party may suffer as a result of use, intended or unintended, or misuse of this product in conjunction with any device or accessory other than the appropriate device for which this product is designed. The manufacturer will not be responsible for any damages you or any third party may suffer as a result of the misuse of this product as outlined above. The purchaser agrees to defend, indemnify, and hold the manufacturer harmless for any claims or damages arising from unintended use or misuse, including use with an unintended device.

FCC WARNING

This device complies with part 15 of the FCC Rules. Operation is subject to the following two conditions: (1) this device may not cause harmful interference, and (2) this device must accept any interference received, including interference that may cause undesired operation.

Any changes or modifications not expressly approved by the party responsible for compliance could void the user's authority to operate the equipment.

NOTE: This equipment has been tested and found to comply with the limits for a Class B digital device, according to Part 15 of the FCC Rules. These limits are designed to provide reasonable protection against harmful interference in a residential installation. This equipment generates, uses and can radiate radio frequency energy and, if not installed and used following the instructions, may cause harmful interference to radio communications. However, there is no guarantee that interference will not occur in a particular installation.

If this equipment does cause harmful interference to radio or television reception, which can be determined by turning the equipment off and on, the user is encouraged to try to correct the interference by one or more of the following measures:

- Reorient or relocate the receiving antenna.
- Increase the separation between the equipment and receiver.
- Connect the equipment into an outlet on a circuit different from that to which the receiver is connected.
- Consult the dealer or an experienced radio/TV technician for help.

To maintain compliance with FCC's RF Exposure guidelines, this equipment should be installed and operated with minimum distance between 20cm the radiator your body: Use only the supplied antenna.

FCC ID: 2ARI5-MS1-01

