

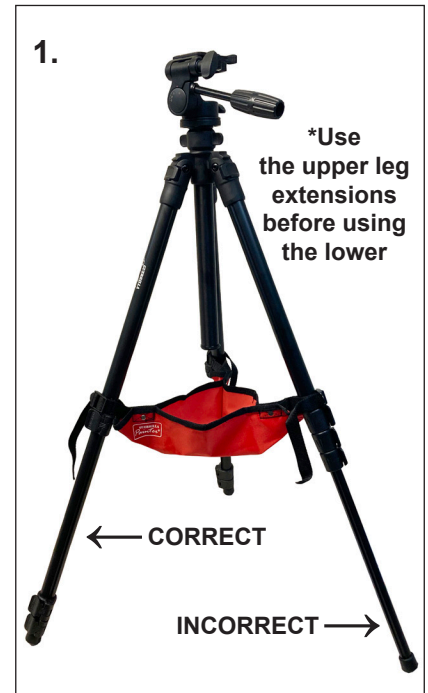
Instructions for the Guerrilla Painter® Plein Air Tripod Kit™ (Item No. 302W)

TRIPOD ADJUSTMENTS

The Guerrilla Painter® Plein Air Tripod has several adjustments which will allow you to use it under a wide range of field conditions:

1. Leg Length: The tripod has legs with 3 sections that can be independently adjusted with the clamps on each leg. Adjust the length of each leg to adapt to uneven terrain. **Use the larger diameter leg extensions first, reserving the smallest for use only when necessary—this will help provide maximum stability.*

2. Leg Angle: Each leg can be adjusted independently for three different angles. All three legs may be adjusted out to a wider stance to provide maximum stability by gently pulling the Leg Angle Tab. The second notch will allow the leg to angle out to a wider stance, while the third notch will let the leg come out horizontal from the tripod.



2.

A

Leg angle tab

B

Angle notches

C

Leg angle tab on second notch

D

Leg Angle Tab on third notch

A) When you initially widen the legs, they will naturally come to a stop at the first notch with the leg at the narrowest angle. No need to move the Leg Angle Tab for this.

To adjust a leg to a wider stance:

(B) gently pull the tab out and angle the leg

(C) rest tab against the second notch for a middling angle

(D) rest tab against the third notch for a horizontal angle

3.

4.

3. Center Column: To adjust the height of the column, loosen the tabbed ring below the tripod head. Raise the column to the desired height and retighten the tabbed ring.

**With heavy devices, extending the center column is not advised because this will tend to reduce stability. When using a pochade box with the tripod, we suggest that you keep the center column in its lowest position and keep the tabbed ring securely tightened.*

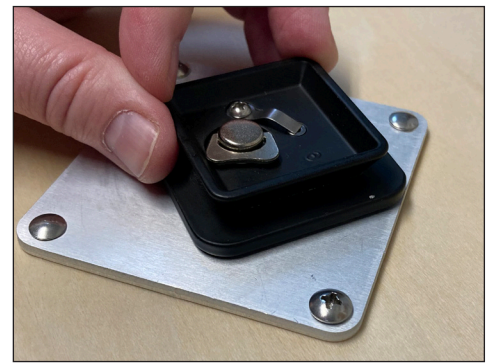
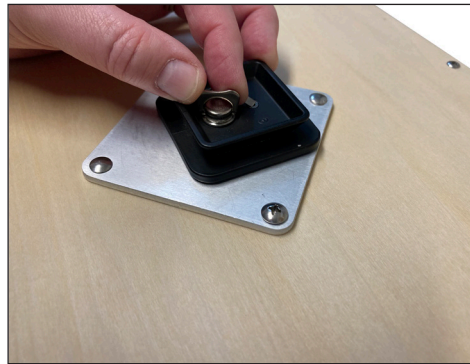
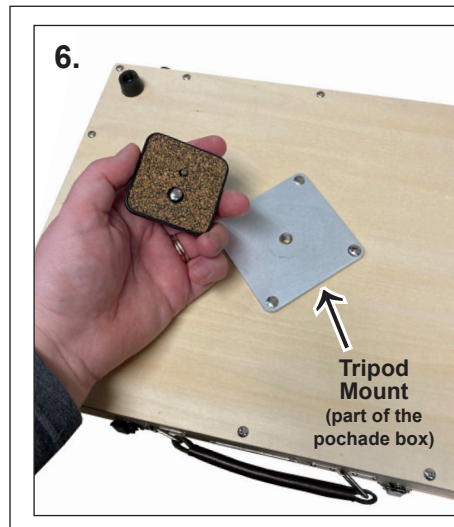
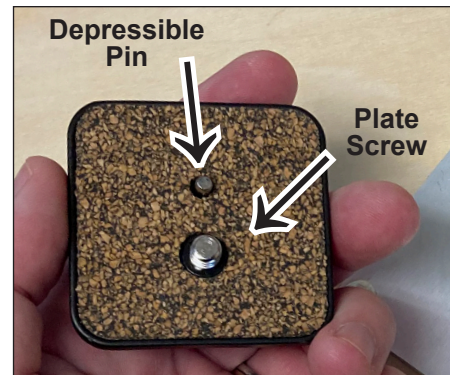
4. Head Angle: To adjust the angle of the Tripod Head to tilt your box forward or backward, twist to loosen the Arm and tilt it up or down to the angle you prefer before tightening the Arm again.

(Continued on back page.)

QUICK RELEASE PLATE

5. Removing the Quick Release Plate From the Tripod Head: Pull the Thumb-Lever. The Quick Release Plate will pop loose from the Tripod Head. To familiarize yourself with how the Quick Release Plate fits into the head of the tripod, we suggest that you remove and replace it several times before moving on to step 6.

6. Mounting the Quick Release Plate onto a Pochade Box: Remove the Quick Release Plate from the head of the tripod. Place your pochade box on its side or upsidedown and screw the Quick Release Plate onto the Tripod Mount. You may use a pair of pliers to tighten the wing-nut. Be sure to lay the wing-nut flat. When mounting the box on the tripod, tip the box away from you so the Quick Release Plate slips into the top of the tripod at an angle. Press down on the box until you hear the Thumb-Lever click closed. Push the Thumb-Lever to make sure it's secure.



7. Angling the Box on the Tripod: Adjust the angle of your box with the arm below where the quick release plate is inserted on the tripod head.

Happy painting!

