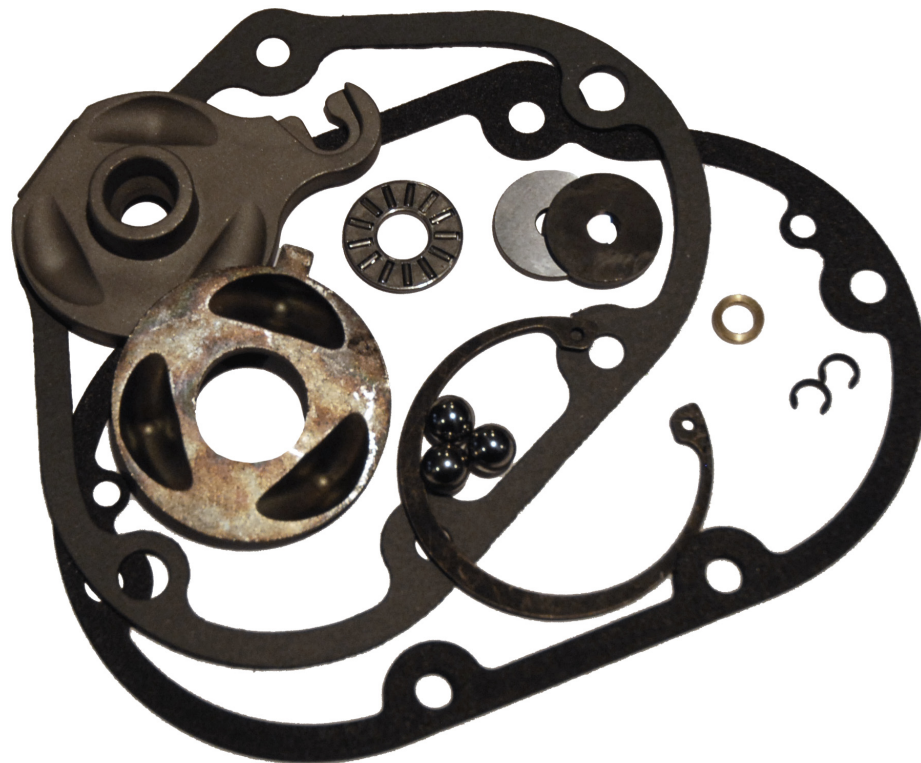


## BAKER HEAVY DUTY THROWOUT BEARING KIT



PN: TBK-56L

### FEATURES:

The BAKER Heavy Duty Throwout bearing kit replaces the failure-prone stock parts and eliminates throwout bearing associated headaches. The larger thrust bearing features a 97% greater surface area and 77% greater static load capacity than the stock throwout bearing. The brass spacer eliminates the possibility of bearing crush and disintegration. It is the perfect compliment for those running heavy duty clutches in a high horsepower abusive environment.

### FITMENT:

All 1987 – 2010 5 and 6 speed Big Twin models with left side drive and cable actuated clutch. Will NOT fit models with factory or aftermarket hydraulic clutches due to the increased bearing and washer diameter. NOTE: This kit includes the early style (18 degree) ball ramps. Installation in 2000 and later models will slightly increase clutch lever effort while providing additional clutch release.

### NOTE:

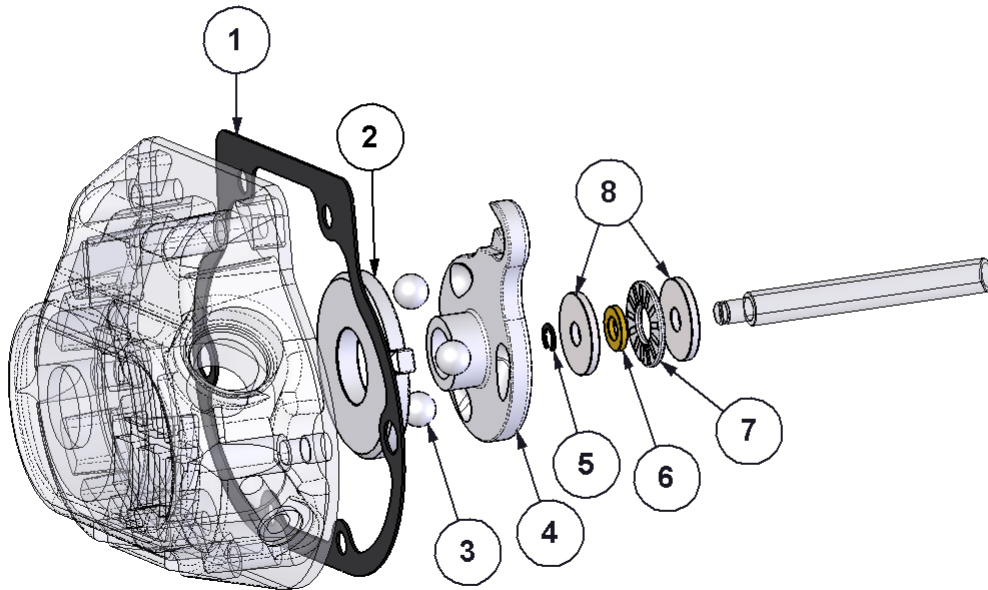
Before proceeding, please be sure that you have the Factory Service Manual for your particular model motorcycle for reference.

# **BAKER HEAVY DUTY THROWOUT BEARING KIT INSTALLATION**

## **TABLE OF CONTENTS:**

1. Overview
2. Table of Contents
3. Included Parts Illustration
4. Step by Step Installation
5. Terms
6. Disclaimer

## INCLUDED PARTS DETAIL



<b>NUMBER</b>	<b>P/N</b>	<b>DESCRIPTION</b>	<b>QTY</b>
1	36801-87B, 36805-06	GASKET, SIDE COVER	1
2	25452-87A	INNER RAMP	1
3	987687	BALL BEARING	3
4	25453-87B	OUTER RAMP	1
5	10705-01149	C CLIP	2
6	BD410-56	SPACER	1
7	FNT-1024	THRUST BEARING	1
8	BD411-56	WASHER	2

## **BAKER HEAVY DUTY THROWOUT BEARING KIT INSTALLATION**

1. Disconnect motorcycle battery
2. Drain transmission oil then re-install drain plug.
3. Remove the exhaust system if necessary to access the transmission sidecover.
4. Fully collapse clutch cable adjuster.
5. Remove right side transmission cover.
6. Carefully remove all traces of old gasket from transmission sidecover and bearing door being careful not to nick or otherwise damage the gasket surfaces.
7. Remove the large snap ring and disconnect the clutch cable and remove existing ball and ramps and ball bearings from the transmission sidecover.
8. Install new inner ramp P/N 25452-87A in sidecover engaging the tang in the cover and the pockets facing the cover gasket surface. Put a dab of wheel bearing grease in each pocket and insert a new 3/8" ball bearing P/N 987687 in the center of each pocket. Attach clutch cable to new outer ramp P/N 25453-87B using existing ferrule.
9. Remove right side clutch pushrod from mainshaft. Remove clip and discard original clip, thrust washers, thrust bearing and oil slinger. The oil slinger will NOT be used in this application. Thoroughly clean and inspect pushrod and replace if worn. Install (1) P/N BD411-56 large heavy duty washer on the pushrod. Coat brass spacer P/N BD410-56 and heavy duty thrust bearing P/N FNT-1024 with assembly lube or transmission fluid and install on the pushrod being careful to center the thrust bearing over the brass spacer. Install the remaining P/N BD411-56 heavy duty washer and then the new clip P/N 10705-01149, being careful not to overly spread the clip. BAKER has provided a spare just in case. Coat pushrod with assembly or transmission lube and reinstall in the transmission mainshaft.
10. Clean gasket surfaces on bearing door and transmission sidecover with lacquer thinner, brake cleaner, or a suitable non-oily solvent. Install new sidecover gasket P/N 36801-87B dry, and re-install transmission sidecover. Use a drop of blue threadlocker on each bolt and torque via factory recommended torque sequence and torque value.
11. Refill transmission with 20 – 24 ounces of the correct lubricant. BAKER recommends Spectro 75 W 140 Synthetic Gear Lube.
12. Adjust clutch per the factory service manual. At this time, it is a good idea to check primary chain tension and primary fluid level and condition. Correct as necessary.
13. Re-connect motorcycle battery.
14. Carefully test ride motorcycle.

# TERMS & CONDITIONS

## ORDERS

Orders can be pre-paid using VISA, MasterCard, American Express, and Discover or via wire transfer (\$30 wire transfer fee applies). All orders not pre-paid will be sent C.O.D. certified check or money order only unless pre-approved for company check acceptance. Any orders from outside the USA must be pre-paid in US funds via wire transfer (\$30 transfer fee applies). Prices shown are F.O.B. Haslett, MI. BAKER™ ships via UPS Ground or USPS Parcel Post for all orders. UPS air shipment or USPS Priority/ Express services are available upon request. Customer is responsible for all shipping charges unless otherwise arranged at the time of sale.

## CUSTOMER SUPPORT

For any installation or service questions, please contact our BAKER technical department: 1-517-339-3835.

## LIMITED WARRANTY

NOTE: Warranty card must be returned within 45 days of purchase for your warranty to be valid.

BAKER™ transmission assemblies and transmission builder 's kits, are guaranteed to the original purchaser to be free of manufacturing defects in materials and workmanship for a period of 5 years from the date of purchase or up to 50,000 miles, whichever occurs first. All other BAKER products are guaranteed to the original purchaser to be free of manufacturing defects in materials and workmanship for a period of 2 years from the date of purchase or up to 24,000 miles, whichever occurs first, except for the following; Warranty does not cover clutch plate wear, throw out bearing failures or mainshaft breakage due to improper clutch nut installation.

Electrical components carry a 30-day warranty; cosmetic finishes (chrome plating, hard anodizing, powder coating) are covered for 60 days. Certain promotional products may carry a shorter warranty as specified at the time of purchase. If the product is found by BAKER to be defective, such products will, at the option of BAKER, be replaced or repaired at cost to BAKER.

In the event warranty service is required, the original purchaser must call or write BAKER immediately with a description of the problem. If it is deemed necessary for BAKER to make an evaluation to determine whether the transmission assembly or transmission kit or accessory is defective, the entire transmission assembly, whether originally purchased as an assembly or kit, must be properly packaged and returned prepaid to BAKER with a copy of the original purchase invoice. If after evaluation by BAKER a defect in materials and/or workmanship is found, BAKER will, at their option, repair or replace the defective part of the assembly.

## RETURNS AND EXCHANGES

Any merchandise returned for any reason (exchange, credit or modification) must be accompanied by a Return Goods Authorization (RGA) number or it will be refused. Call BAKER to obtain this number prior to returning goods for any reason. There is a 15% re-stocking fee for all returned items.

BAKER is not liable for any shipping.

## ADDITIONAL WARRANTY PROVISIONS

NOTE: Limited warranty does not cover labor or other costs or expenses incidental to the repair and or replacement of BAKER products.

This warranty does not apply if one or more of the following situations is judged by BAKER to be relevant: BAKER OEM transmissions ; (these are subject to the OEM manufacturers warranty only), Improper installation , accident, modification (including but not limited to use of unauthorized parts, transmission oils or lubricants), racing, high performance application, mishandling, misapplication, neglect (including but not limited to improper maintenance), or improper repair.

BAKER shall not be liable for any consequential or incidental damages arising out of or in connection with a BAKER transmission assembly, transmission kit, component or part. Consequential damages shall include without limitation, loss of use, income or profit, or losses sustained as the result of injury (including death) to any person or loss of or damage to property.

BAKER transmissions, transmission kits and accessories are designed exclusively for use in American V-Twin motorcycles. BAKER shall have no warranty or liability obligation if BAKER parts are used in any other application.

If it is determined that a BAKER product has been disassembled during the warranty period for any reason, this limited warranty will no longer apply unless you were instructed to do so by a BAKER Drivetrain technician for diagnostic purposes.

---

## **DISCLAIMER**

The words Harley, and H-D are registered trademarks and are for reference only. Use of H-D model designations and part numbers are for reference only. BAKER Drivetrain has no association with, and makes no claim against, these words, trademarks, or companies.

It is the sole responsibility of the user to determine the suitability of this product for his or her use, and the user shall assume all legal, personal injury risk and liability and all other as well as all other obligations, duties and risks associated therewith.

### **CUSTOMER SUPPORT**

For any installation or service questions, please contact our BAKER technical department toll free: 1-517-339-3835.

Baker Drivetrain  
9804 Old M-78  
Haslett, MI. 48840

On the web:  
[www.bakerdrivetrain.com](http://www.bakerdrivetrain.com)

