

# BAKER BULLY PRIMARY COVER

## INSTALLATION INSTRUCTIONS



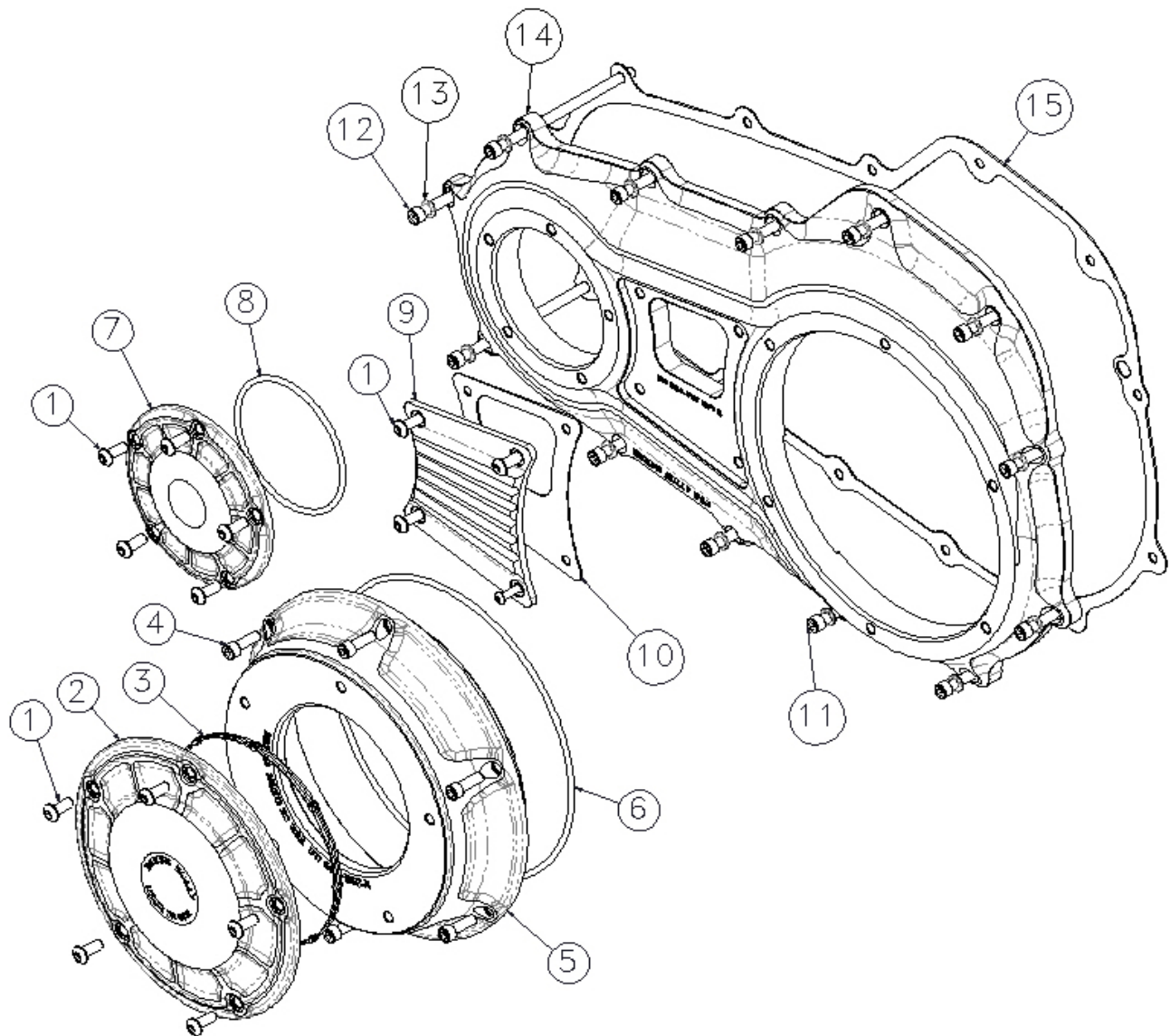
### FEATURES

The Bully Primary Cover will add the style and cool factor to your 2007 & Later touring model that the stock primary cover could not. With the introduction of the stock 6 speed on the 2007 Touring models also came with a completely new primary assembly. This new primary design got smoother and thus more boring than the previous version. Being the biggest single piece of architecture on the right side of the motorcycle, it is just begging to be upgraded and replaced. Having cut our teeth on many designs using our Function Formed cues, we set out to make the primary cover assembly wrap the essential function components of the primary. We added a motor sprocket cover, inspection and what we call the bellhousing around the clutch to break up the large mushy surface area of the stock unit. Adding separate covers also opens up the possibilities when it comes to customizing the aesthetics to meet your demands.

### BULLY PRIMARY COVER KIT PART NUMBERS

PN	DESCRIPTION	FITMENT
BLY-60001C-67	Bully Primary, Chrome	2007-Later Touring
BLY-60003C-67	Bully Primary, Hog Black	2007-Later Touring
BLY-60005C-67	Bully Primary, Gloss Black	2007-Later Touring
BLY-60008C-67	Bully Primary, Hog Black w/Highlights	2007-Later Touring
BLY-60009C-67	Bully Primary, Gloss Black w/Highlights	2007-Later Touring

# BAKER BULLY PRIMARY COVER



TAG	PN	QTY	DESCRIPTION
1	73753	14	1/4-20 x .625" BHCS, SS
2	606-BLY	1	Bully Derby Cover
3	17369-06	1	Derby Cover Seal Ring
4	25C75KCSS/P	6	1/4-20 x .750" SHCS, SS
5	605-BLY	1	Bully Bellhousing
6	OR568265	1	O-Ring, -265 Buna
7	608-BLY	1	Bully Motor Cover
8	OR568237	1	O-Ring, -237 Buna
9	607-BLY	1	Bully Inspection Cover
10	607-BLY-G	1	Gasket, Bully Inspection Cover
11	25C100KCSS/P	9	1/4-20 x 1.00" SHCS, SS
12	25C450KCSS/P	4	1/4-20 x 4.50" SHCS, SS
13	6099SS	13	1/4" AN Washer, SS
14	604-BLY	1	Bully Motor Plate
15	34901-07	1	Gasket, Bully Primary

# BAKER ATTITUDE CHAIN ADJUSTER

## INSTALLATION

1) Disconnect the battery, drain the primary fluid, remove both sets of floorboards and remove the entire stock outer primary cover assembly.

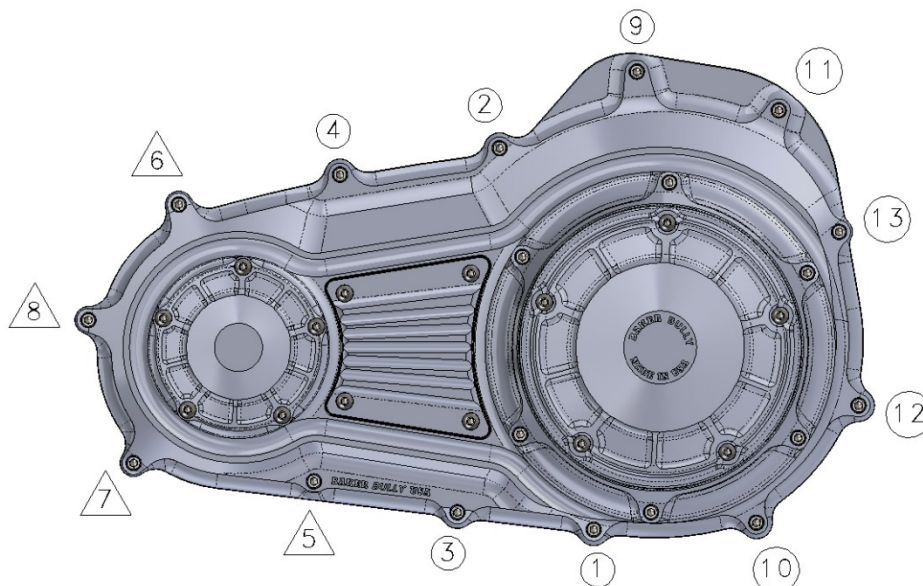
2) With the outer cover removed, check to make the inner primary gasket surface is clean, smooth and free of debris. Take this time to double check that all of the ¼-20 tapped holes in the inner primary are clean of oil and residual thread lock. If you also purchased the BAKER Attitude Chain Adjuster, refer to those instructions to install at this time.

3) Place the provided new outer primary gasket (PN 34901-07) on the split alignment dowels on the inner primary at this time.



**THE MOTOR COVER, INSPECTION COVER, BELLHOUSING AND DERBY COVER ARE INSTALLED BEFORE LEAVING BAKER, USING THREAD LOCK AND THE BOLTS TORQUED TO 130 IN-LBS. YOU DO NOT NEED TO REMOVE THESE PARTS TO INSTALL THE BULLY PRIMARY COVER ASSEMBLY. IF YOU CHOOSE TO, PLEASE RE INSTALL IN A CRISS CROSS BOLT TORQUING PATTERN, USING BLUE THREAD LOCK AND TORQUE TO 130 IN-LBS.**

4) While referencing the bolt torque sequence diagram below, install the provided bolts and washers in the proper locations. Torque the bolts to 150 in-lbs using 'Blue' Thread lock.



**\*\*Triangle bolt locations, are the provided ¼-20 x 4.5" SHCS (PN 25C450KCSS/P)**

5) With the Bully Primary Cover installed, fill the primary with 45 oz of Primary Fluid. BAKER recommends Spectro Heavy Duty Chain Case Oil, PN R.GAPCL.

6) Re-assemble the rest of the motorcycle, while referencing the service manual.

# BAKER BULLY PRIMARY COVER

## TERMS:

### SPECIAL ORDERS

A minimum \$500 deposit is required with all special orders. Special orders include unique case finishes, unique side door requests

### ALL OTHER ORDERS

Orders can be pre-paid using VISA, Mastercard, Pay Pal or American Express.

Prices shown are F.O.B. Haslett, MI. UPS air shipment is available upon request. Customer is responsible for air shipment premiums.

### LIMITED WARRANTY

BAKER™ transmission assemblies, transmission kits, primaries, and oil pans are guaranteed to the original purchaser to be free of manufacturing defects in materials and workmanship for a period of 5 years from the date of purchase or up to 50,000 miles – whichever occurs first.. BAKER™ clutches, kicker cover kits, belt drives, F6F kit, reverse systems, covers and accessories are guaranteed to the original purchaser to be free of manufacturing defects in materials and workmanship for a period of 2 years from the date of purchase or up to 24,000 miles – whichever occurs first. If the product is found by BAKER™ to be defective, such products will, at the option of BAKER™, be replaced or repaired at cost to BAKER™

In the event warranty service is required, the original purchaser must call or write BAKER™ immediately with the problem. If it is deemed necessary for BAKER™ to make an evaluation to determine whether the transmission assembly or transmission kit is defective, the entire transmission assembly, whether originally purchased as an assembly or kit, must be properly packaged and returned prepaid to BAKER™ with a copy of the original invoice of purchase.

If after an evaluation has been made by BAKER™ and a defect in materials and/or workmanship is found, BAKER™ will, at BAKER™ option, repair or replace the defective part of the assembly.

Warranty card must be returned within 45 days of purchase to be valid.

### ADDITIONAL WARRANTY PROVISIONS

This limited warranty does not cover labor or other costs or expenses incidental to the repair and or replacement of BAKER™ products. This warranty does not apply if one or more of the following situations is judged by BAKER™ to be relevant: improper installation, accident, modification (including but not limited to use of unauthorized parts), racing, high performance application, mishandling, misapplication, neglect (including but not limited to improper maintenance), or improper repair.

BAKER™ shall not be liable for any consequential or incidental damages arising out of or in connection with a BAKER™ transmission assembly, transmission kit, swingarm, fender, component or part. Consequential damages shall include without limitation, loss of use, income or profit, or losses sustained as the result of injury (including death) to any person or loss of or damage to property.

BAKER™ transmissions, transmission kits, and Wide Tire Kits are designed exclusively for use in Harley-Davidson® motorcycles. BAKER™ shall have no warranty or liability obligation if a BAKER™ part is used in any other application.

If it is determined that a BAKER™ transmission assembly has been disassembled during the warranty period for any reason, this limited warranty will no longer apply.

## **BAKER BULLY PRIMARY COVER**

### **DISCLAIMER:**

The words Harley, and H-D are registered trademarks and are for reference only. Use of H-D model designations and part numbers are for reference only. BAKER Drivetrain has no association with, and makes no claim against, these words, trademarks, or companies.

It is the sole responsibility of the user to determine the suitability of this product for his or her use, and the user shall assume all legal, personal injury risk and liability and all other as well as all other obligations, duties and risks associated therewith.

### **CUSTOMER SUPPORT**

For any installation or service questions, please contact our BAKER technical department toll free: 1-877-640-2004.

**BAKER DRIVETRAIN**  
**9804 E. SAGINAW**  
**HASLETT, MI. 48840**

On the web:

[www.bakerdrivetrain.com](http://www.bakerdrivetrain.com)

