

**USER MANUAL**



**Item 71110 Version 1.0**  
Visit [www.trust.com](http://www.trust.com)  
for the latest instructions

**OCTOPUS CONTROL STATION**

Read the manual carefully. Failure to follow these instructions can be dangerous. Incorrect installation will void any warranty on this product.

### **COMPATIBILITY**

This product works with all Trust Smart Home transmitters and receivers.

### **FUNCTIONALITY**

The ideal solution to wirelessly control and monitor your home for ultimate comfort and security

### **WIRELESS RADIO SIGNAL**

- The 433.92 MHz radio signal passes through walls, windows and doors.
- Indoor 433.92 MHz range: up to 30 m. Outdoor 433.92 MHz range: up to 70 m (optimal conditions).
- The 868 MHz radio signal passes through walls, windows and doors.
- Indoor 868 MHz range: up to 70 m. Outdoor 868 MHz range: up to 120 m (optimal conditions).
- The Zigbee radio signal passes through walls, windows and doors.
- Indoor Zigbee range: up to 30 m. Outdoor Zigbee range: up to 70 m (optimal conditions).
- The range is dependent on local conditions, such as the presence of metals. For example, the thin metal coating in Low-emissivity (Low-E) glass can have a negative impact on the range of radio signals.
- There may be restrictions on the use of this device outside the EU. If applicable, check whether this device complies with local directives.
- This class 1 wireless device meets the essential requirements and other relevant conditions of R&TTE Directive 1999/5/EC. Be careful when using wireless devices if you have a pacemaker or are dependent on other life-saving, sensitive electronic equipment, because this device transmits radio signals.



For safety & liability information visit [www.trust.com/safety](http://www.trust.com/safety)

### **LIFE SUPPORT**

Never use Trust Smarthome products for life support systems or other applications where failures can have life-threatening consequences.

### **REPAIRS**

Do not try to repair this product yourself. The device contains no serviceable parts for the user.

### **WATER-RESISTANT**

This product is not water-resistant.

### **CLEANING**

Clean this product with a dry cloth. Do not use harsh chemicals, cleaning solvents or strong detergents.

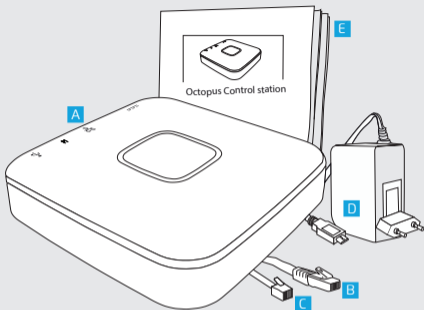
### **HANDLING**

Do not drop the device, bump the device against something or shake it. Rough handling can damage internal circuit boards and fine mechanics.

### **ENVIRONMENT**

The product should not be exposed to extreme heat or cold. This can damage the circuit boards and batteries or shorten its life.

1



## 1. Package content

First, please check if the package contains the following items:

- A** Internet control station
- B** RJ-45 cable/Network cable
- C** P1 cable (Used for smart meters with a P1 connection. See [trust.com/71110](http://trust.com/71110) for more info)
- D** Power adapter
- E** User manual

47110  
OCTOPUS INTERNET CONTROL STATION ICS-2000  
INTERNET CONTROL STATION ICS-2000




De producten van Trust zijn van hoge kwaliteit en worden vervaardigd in Nederland. De producten voldoen aan alle relevante Nederlandse en Europese normen.

[f](#) [g+](#) [t](#) [+](#)

**SUPPORT**

— DOWNLOAD

[MANUALS](#)

Select type

USER MANUAL

Trust: Security  
Version: 1.0

[DOWNLOAD PDF \(1.24 MB\)](#)

[PRODUCT INFORMATION](#)

Select your language

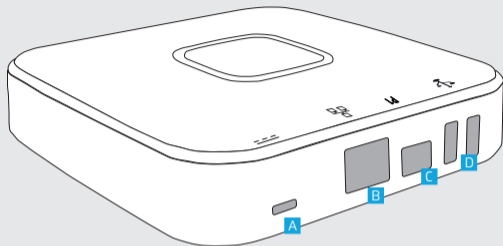
ENGLISH

[DOWNLOAD PDF](#)

**i** This is a quick installation guide with basic installation and usage instructions. Check the advanced manual on [www.trust.com/71110](http://www.trust.com/71110) for more in-depth information like:

- Adding & using timers, scenes and rules
- Connecting & Controlling other devices
- Technical specifications
- App settings
- and more

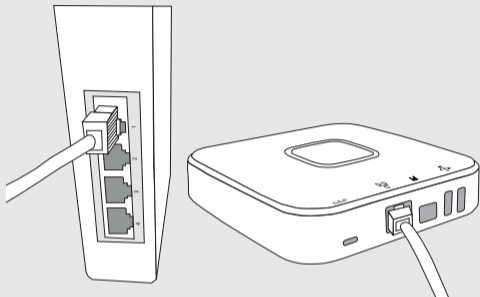
2



## 2. Connection ports

The control station has the following ports:

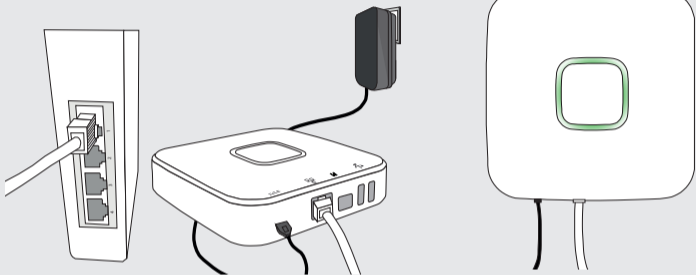
- A Micro USB Power port.** Used for connecting the control station to a wall socket
- B Network port.** Used for connecting to your home LAN network.
- C P1 port.** Used for smart energy meters with a P1 connection. See [trust.com/71110](http://trust.com/71110) for more info
- D USB ports.** Used for future connectivity extensions. See [trust.com/71110](http://trust.com/71110) for more info

**3**

### **3. Connect the control station to your modem/router**

Connect the control station to the modem/router using the included RJ-45/network cable.

4



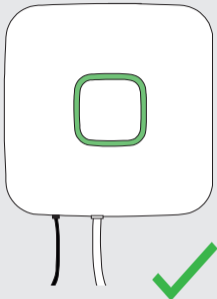
### 4. Connect the power adapter

Connect the micro usb power adapter to the Octopus control station and insert the plug of the power adapter into a wall socket. The LEDs of the control station will light up and start to spin to update the firmware.

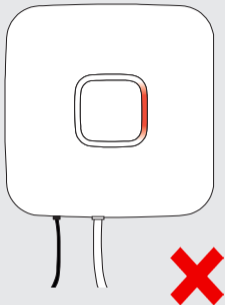
**⚠** Do not disconnect the power or interrupt the control station in any way when the LED ring is spinning green to update the firmware. When the control station is done booting and updating all four LEDs will stay green. This can take a few minutes.



5a



5b



## 5. Check installation

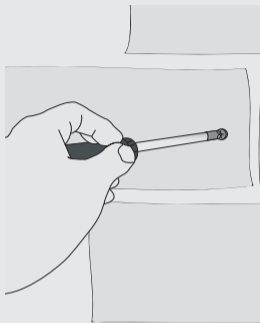
**5a.** If the installation of the control station is successful, all four LEDs (in the ring) will light up green and stay green. Check the advanced manual on how to disable the LED light.

**5b.** If after installation a red LED lights up try to take the following steps:

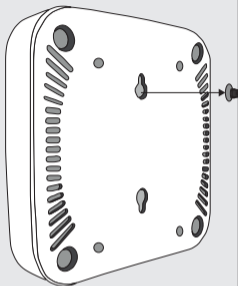
1. Check if network cable is connected to the modem/router and control station
2. Check if power adapter is connected to the wall socket and the control station
3. Press the network cable and power cable firmly into the control station and modem/router.
4. Connect the control station directly to your modem.
5. Disconnect and reconnect the power adapter.

For more troubleshooting go to [trust.com/71110](http://trust.com/71110)

6a



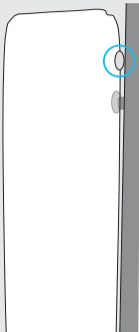
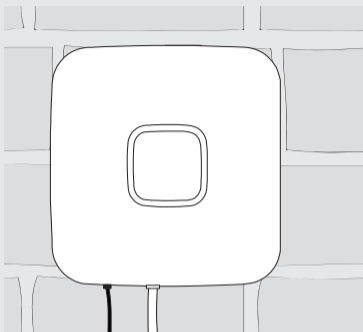
6b




## 6. Mounting (Optional)

**6a.** Secure the included screw in the surface where the control station will be mounted. Make sure the screw is not placed in a crack or a hole in the surface.

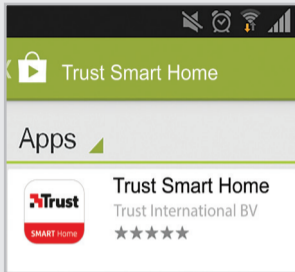
**6b.** Place the control station on the screw.

**6c**

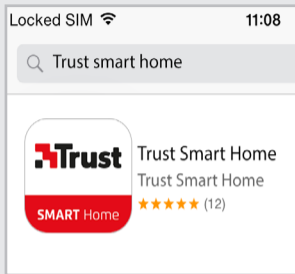
 Make sure the screw is fastened in a way that the rubber feet of the control station are firmly pressed against the surface when placed on the screw.

**6c.** For best performance mount the control station with the cables facing down.

8a



8b



## 8. Install the app

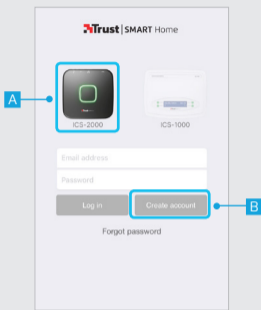
### 8a. Android

Open the Play Store, search for the Trust Smart Home app and install the app on your mobile device.

### 8b. iOS

Open the App store, search for the Trust Smart Home app and install the app on your mobile device.

9



## 9. Register account

**⚠** Make sure your phone/tablet is connected to the same Home/LAN network as your ICS-2000.

When opening the App after installation the login screen will be shown.

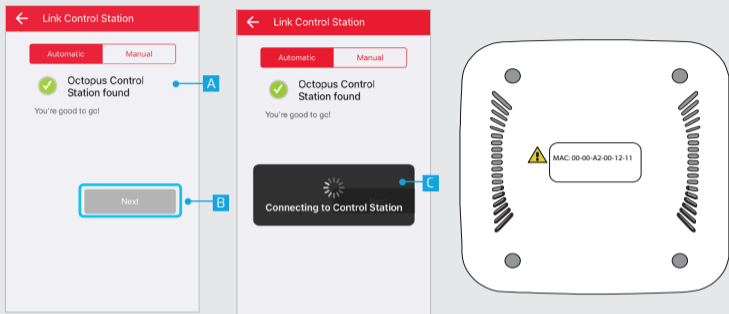
**A** First press on the picture of the ICS-2000 control station

**B** Press the CREATE ACCOUNT button.

**C** A screen appears to fill in your account information. Fill in your name, email address and a self created password.

**D** Choose if you want to receive a newsletter or not. (The newsletter contains information about updates for the control station)

**E** When all information is filled in press the NEXT button to continue the registration.



### 10. Link control station automatically

The App will scan for any control station connected to the network.

**A** When your control station is installed properly the App will show a message that the Octopus Control station is found.

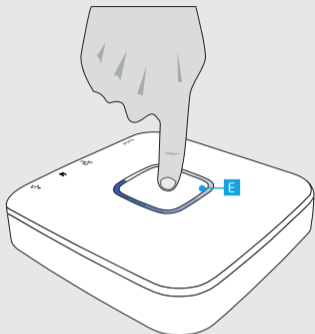
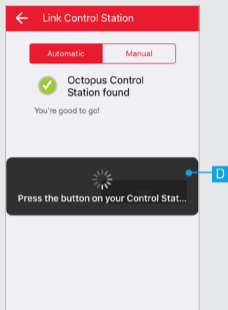
**B** Press NEXT to continue the linking process.

**C** The App is now connecting with your control station.

### **⚠️ "Manual linking required"**

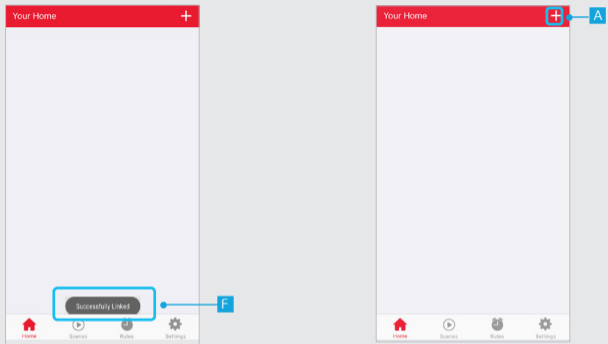
If you see above message, press the MANUAL button and fill in or select the correct MAC address. The MAC address can be found on the bottom of the control station. For more information on manual registration check the advanced manual on [trust.com/71110](http://trust.com/71110)

**⚠️** If the App cannot connect to the control station go to [trust.com/71110](http://trust.com/71110) for troubleshooting and support.



**D** After successful connection, a dialogue is shown to press the the blue circling button on your control station.

**E** Press the blue circling button on your control station within 60 seconds to link your control station to your account.

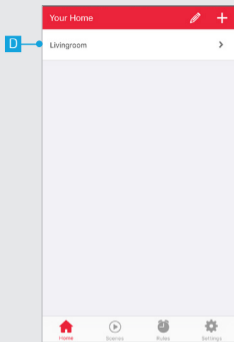
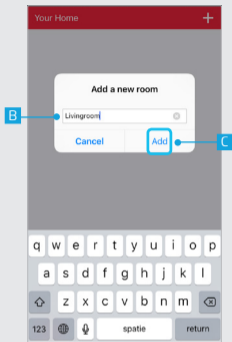


**F** When the registration process is completed the home screen of the App will be shown with the message "Successfully Linked".

### 11. Add a room

**A** Press the + button at the top of the screen to add a new room

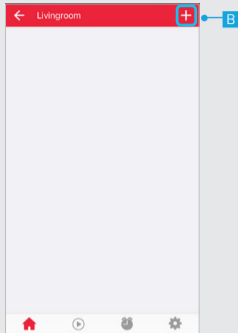
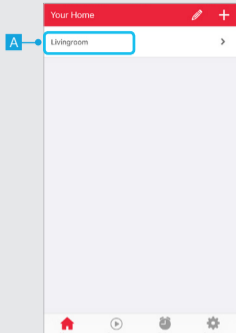




**B** Enter the name of the room you want to add.

**C** Press ADD

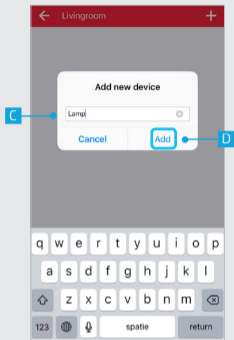
**D** The added room is now listed in your home



### 12. Add a device

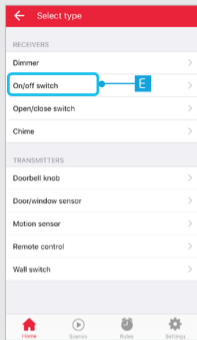
**A** Press on a room name to open it.

**B** Press the + button at the top of the screen to add a new device.

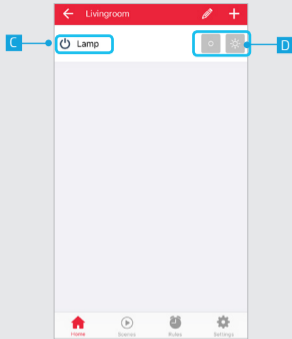
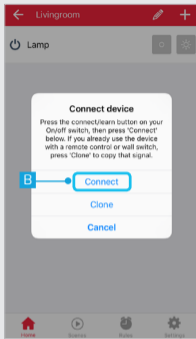
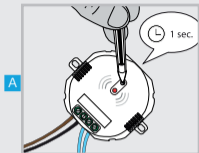


**C** Enter a name for the device you want to add

**D** Press ADD.



**E** Select the type of device you want to add to your room.



## 13. Connect a new device

**⚠** If you already control your Trust Smart Home receiver with a remote control or wall switch continue to step 14. (Only for Startline products)

**A** Put your receiver in connect/learn mode. (Read the manual of the receiver on how to put it in connect/learn mode).

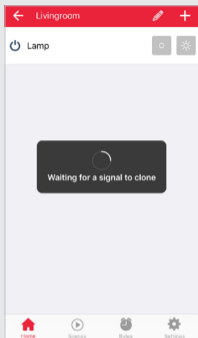
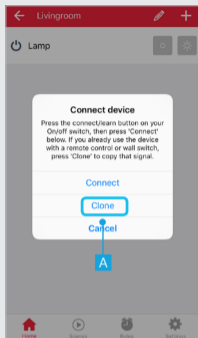
**B** When the receiver is in connect/learn mode press **CONNECT**.

23

The receiver will go on and off twice to acknowledge the connection.

**C** The device is now added to your room. You can now control the device with the App.

**D** Use the buttons to control the device.



#### 14. Connect an existing device (clone)

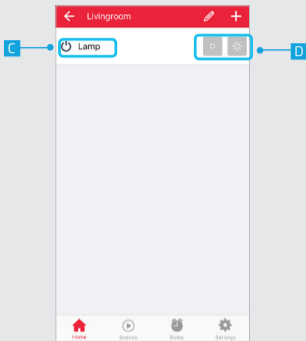
This step is recommended when you already control your Trust Smart Home receiver with a remote control or wall switch. (Only for Startline products)

**A** Press CLONE

**B** A dialogue is shown to clone the signal of the transmitter

**C** Give an ON signal on the transmitter that controls the device chosen in step 12e.

## ICS-2000 OCTOPUS CONTROL STATION



**C** The device is added to your room. You can now control the device with the App.

**D** Use the buttons to control the device.



Check the advanced manual on [www.trust.com/71110](http://www.trust.com/71110) for more in-depth information like:

- Adding & using timers, scenes and rules
- Connecting & Controlling other devices
- Technical specifications
- App settings
- and more



If possible, dispose of this product at a recycling center. Do not dispose of this product with the household waste. WEEE: Dispose of the device at a recycling centre. More information: [www.trust.com](http://www.trust.com)

### **Warranty**

This product is covered by the legal warranty that applies to your country and it begins on the day of purchase. For additional information, visit: [www.trust.com/warranty/](http://www.trust.com/warranty/)

### **Copyright**

The contents of the "User manual" are subject to copyright protection. Without prior written permission, reproducing or copying is prohibited. Information in these documents is subject to change without prior notice. Check [www.trust.com/71110](http://www.trust.com/71110) for updates.

 For support and FAQ go to [trust.com/71110](http://trust.com/71110)

**CE Declaration of conformity**

Trust International B.V. declares that the TRUST SMARTHOME-product:

model: Octopus Control station  
item number: 71110  
intended use: Indoor

is in compliance with the essential requirements and other relevant provisions of the following directives: EMC Directive (2004/108/EC), Low Voltage Directive (2006/95/EC), ROHS Directive (2011/65/EC), R&TTE Directive (1999/5/EC). The product is compatible with the following norms/standards:

The product is compatible with the following norms/standards:

EN.300.328  
EN.300.220  
EN 55022  
EN 55024  
ETSI-EN 301 489-17  
NEN-EN-IEC 60950-1  
EN 50581:2012

Manufacturer/Authorized representative,



H. Donker, Procurement Director

Dordrecht, 21 January 2016

**EUROTEC** People • Technology • Solutions  
HVAC • Refrigeration • Electrical • Measurement

**TRUST INTERNATIONAL B.V.**  
LAAN VAN BARCELONA 600  
3317DD DORDRECHT  
NETHERLANDS  
www.trust.com

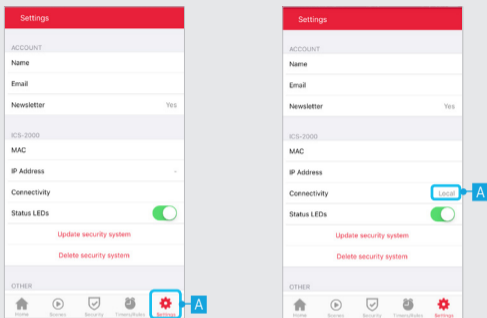


**CONFIGURATION OF THE  
SECURITY SYSTEM**



**Item 71110 Version 1.0**  
Visit [www.trust.com](http://www.trust.com)  
for the latest instructions

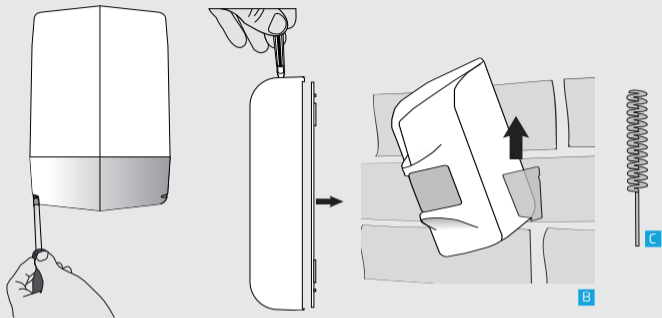
**OCTOPUS CONTROL STATION**



## 1. Preparation

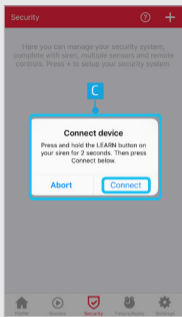
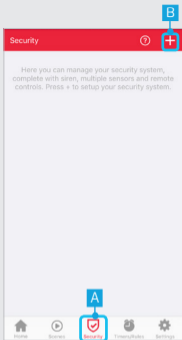
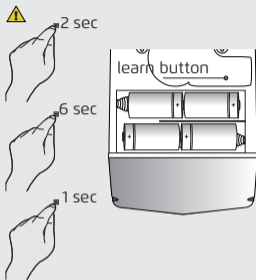
**Make sure your phone / tablet is connected to the same network as the ICS-2000**

**A** To verify this, check in the settings if the connectivity is displaying local. If this is not the case, connect to the Wi-Fi network of the router to which your ICS-2000 is connected to.



**B** Unscrew the siren cap, open the contact sensors and remove the motion sensor(s) from the holders.

**C** Keep the included pin ready for pressing the pairing button.



## 1.1 Connect a new security system

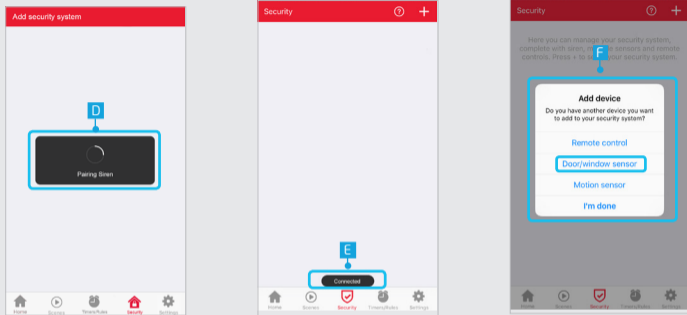
**By connecting the security system with the Octopus control station it is possible to operate it with your smartphone / tablet and receive push notifications when the alarm is activated.**

**⚠** If you already have a working Trust Smart Home security system first clear the sirens memory by pressing the learning button for 2 seconds (until the LED starts flashing), then release the button and press it again for 6 seconds. Release it again and press once briefly. The LED will flash 5 times to confirm the deletion.

**A** Press the SECURITY button in the menu bar

**B** Press the + button at the top of the screen to add a new security system.

**C** A dialog is shown to put the siren in learning mode. (Refer to the manual of the siren howto put it into learning mode.) Press CONNECT after activating the learning mode.



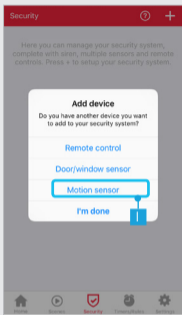
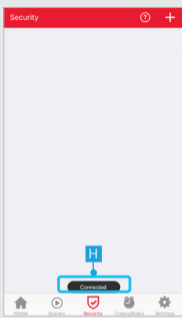
**D** The Siren is now being paired to the control station

**E** The Siren is now paired to the control station

**F** Another dialog is displayed to add a device. Press the DOOR / WINDOW SENSOR. A new dialog is displayed to give a name for the door / window sensor. Enter a name and press ADD.

**⚠** Cause of environmental factors, you may need to repeat the pairing, choose RETRY

## ICS-2000 INTERNET CONTROL STATION

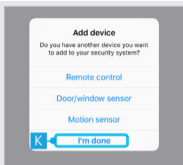
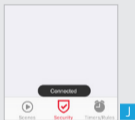


**G** Press the SET button on the sensor for about 2 sec. Then press the CONNECT button.

**H** The sensor is paired to the control station

**I** Another dialog is displayed to add a device. Press the MOTION SENSOR. A new dialog is displayed to give a name for the motion sensor. Enter a name and press ADD.

**J** Press the SET button on the sensor for about 2 sec. Then press the CONNECT button.

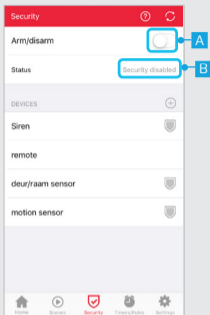


**K** Another dialog is displayed to add a device. When you are done adding sensors, press the button I'M DONE. The security system is now being added. This may take some time (1-2 minutes)

**L** Optional: Add Remote.

**⚠** It is not a requirement to add the remote control. You can control the security system completely with the App.

To add the remote follow the steps in section 1.4



## 1.2 Security system interface

After adding the security system the overview screen will be displayed

**A On / Off switch:** With this switch the system can be turned on or off.

**B System Status:** The status of the system is shown. There are six different states.

**Security System:** The security system is off. The sensors will not trigger the alarm.

**Sensors check:** The status of the sensors are checked and the walk-out time is started

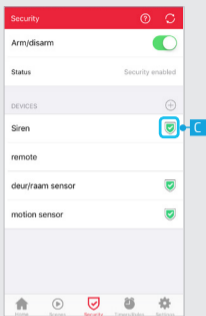
**Walk-out time:** The walk-out time is active. The sensors will not trigger the alarm until for ~ 85 sec.


**Security system on:** The security system is on.

**Activation Error:** One of the sensors is not closed or an anti-tamper switch is not closed properly.


**Alarm goes off:** The security system goes off.





 **Sensor status:** When the system is turned on or off, the status of the sensors are checked and displayed.


: Sensor is active

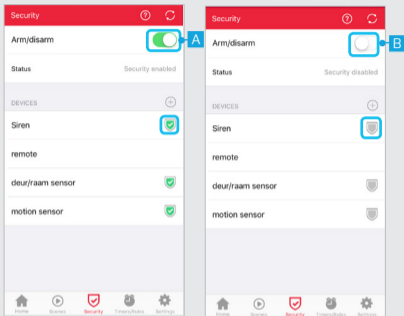
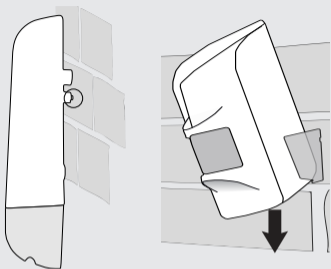
: Sensor is not active

: Battery of the sensor is almost empty

: Anti-tamper switch is activated

: Sensor has no connection

 When the system is activated and one of the sensors or siren indicates an error the status of the system will change to activation error. Turn the system off and on again. If still not resolved: Make sure all sensors and the siren are correctly mounted according to the instructions. Replace batteries when the sensor or siren continues to give a connection error



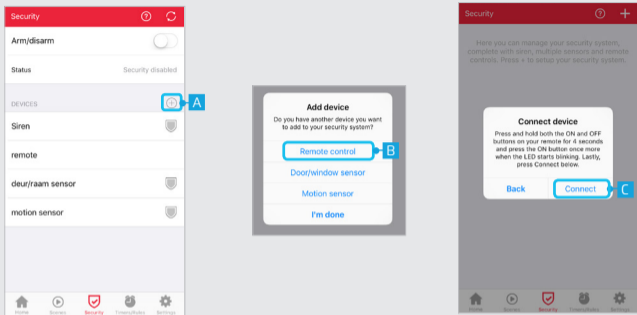
### 1.3 Turn the security system ON/OFF

**Ensure when you turn on the security system the anti-tamper switch of the siren is well pressed and that the motion sensor is securely mounted onto the holder.**

**A** Press the ON switch in the App or ON on the remote control to turn the security system on. The switch will open and become green, the status will change to "Checking Sensors". All sensors will be checked. When a sensor is checked and it works the active icon will be displayed next to the sensor and the status will change to "Walk-out time".

**Walk-out time:** During the walk-out time the sensors will not activate the system until after ~ 85 sec. After ~ 85 seconds the status will change to ON and the system will be active.

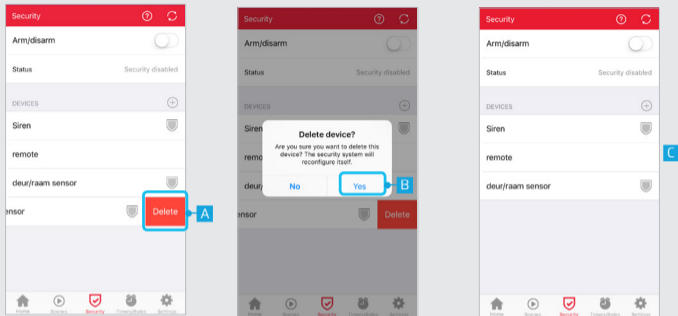
**B** Press the OFF switch in the App or OFF on the remote control to turn off the security system. The switch will close and the status will change to "Security System disabled." All sensors will show the inactive icon. The system and the sensors will not respond if they are opened.



## 1.4 Add a new sensor or remote

- A** Press the + button to add an additional sensor or remote control
- B** A dialog box will appear in order to select a sensor or a remote control which to be added. Press the desired sensor or remote control. Enter a name and press ADD.
- C** Follow the instructions in the next dialog and press CONNECT.

When you finished adding a sensor or remote control the security system will reconfigure. This may take some time (1-2 minutes)

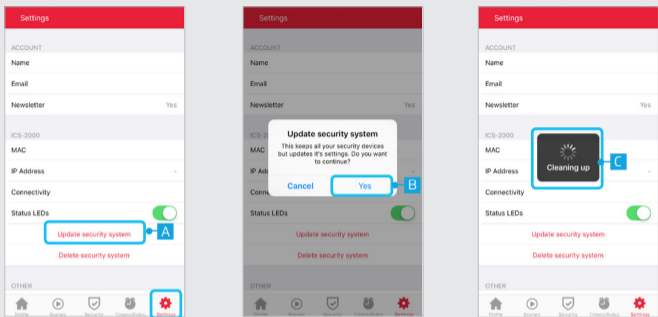


### 1.5 Delete a sensor or remote

**A** To remove a sensor (in iOS) slide your finger from right to left over the sensor which you want to delete. For the removal of a sensor in Android press 2 seconds on the name of the sensor.

**B** A dialog appears to confirm whether to delete the sensor or remote control. Press YES to delete the sensor or remote control. The sensor or remote control is now removed.

**C** In the overview the chosen sensor removed. When you are done removing the sensor or remote the security system will reconfigure itself. This may take some time (1-2 minutes)



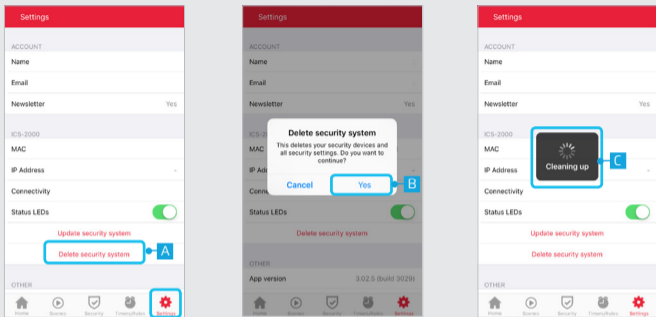
## 1.6 Update the security system

The update function updates the security settings. This may take some time (2-3 minutes). Please only use this feature when it is advised by our customer care department.

**A** To update the security system, press the **SETTINGS** button in the menubar. Then press **SECURITY SYSTEM UPDATE**.

**B** A dialog appears asking if you want to proceed with updating the security system. Press **YES**.

**C** The security system is now being updated. This may take some time (1-2 minutes)



### 1.7 Delete the security system

The delete function can be used if you want to start over. All security sensors need to be reconnected. Note: before you restart please reset all sensors, remote control and siren.

**A** To DELETE the security system, press the SETTINGS button in the menubar. Then press DELETE SECURITY SYSTEM.

**B** A dialog appears asking if you want to proceed with deleting the security system. Press YES.

**C** The security system is now being deleted. This may take some time (1-2 minutes)

## FAQ

**Q: I keep getting an “activation error” on the motion sensor.**

A: Check if the motion sensor is properly mounted into its wall holder. Push the holder into the holes and slide the motion sensor down until you hear a click. This is clearly illustrated in the manual of the sensor.

**Q: I keep getting an “activation error” on the siren.**

A: Make sure the anti-tamper switch on the bottom of the siren is properly pressed and that the cap is screwed tight.

**Q: The configuration stage of my security system takes a long time.**

A: Check the App settings that the connection mode says “local state”. If this is not the case, connect to the Wi-Fi network of the router to which your ICS-2000 is connected.

**Q: What are the minimum requirements to use the system?**

A: To use the security system with the ICS-2000, you need at least a siren and a sensor.

**Q: Pairing the remote sensor or siren is difficult. I keep getting TRY AGAIN.**

A: Follow the exact steps for the pairing procedure indicated by the App. Make sure your app is in local mode.

**Q: My sensor always shows empty battery icon but the batteries are new.**

A: Turn on your alarm system to refresh the battery status. If this does not work, use high capacity alkaline batteries such as Duracell Ultra or Energizer Ultimate.

ONLINE MANUAL



Item 71110 Version 1.0  
Visit [www.trust.com](http://www.trust.com)  
for the latest instructions

OCTOPUS CONTROL STATION



## Index

<b>1.1</b> Add a room	7
<b>1.2</b> Edit/Delete room	8
<b>2.1</b> Connect a new device	9
<b>2.2</b> Connect an existing device (Clone)	12
<b>2.3</b> Edit/Delete device	13
<b>3.1</b> Add scenes	14
<b>3.2</b> Add/Delete actions	15
<b>3.3</b> Add/Delete delays	16
<b>4.1</b> Configure timers	17
<b>4.2</b> Edit/Delete timer	20
<b>5.1</b> Configure rules	21
<b>5.2</b> Edit/Delete rule	24
<b>6.0</b> Connect manually	25

Read the manual carefully. Failure to follow these instructions can be dangerous. Incorrect installation will void any warranty on this product.

### **COMPATIBILITY**

This product works with all Trust Smart Home transmitters and receivers.

### **FUNCTIONALITY**

The ideal solution to wirelessly control and monitor your home for ultimate comfort and security

### **WIRELESS RADIO SIGNAL**

- The 433.92 MHz radio signal passes through walls, windows and doors.
- Indoor 433.92 MHz range: up to 30 m. Outdoor 433.92 MHz range: up to 70 m (optimal conditions).
- The 868 MHz radio signal passes through walls, windows and doors.
- Indoor 868 MHz range: up to 70 m. Outdoor 868 MHz range: up to 120 m (optimal conditions).
- The Zigbee radio signal passes through walls, windows and doors.
- Indoor Zigbee range: up to 30 m. Outdoor Zigbee range: up to 70 m (optimal conditions).
- The range is dependent on local conditions, such as the presence of metals. For example, the thin metal coating in Low-emissivity (Low-E) glass can have a negative impact on the range of radio signals.
- There may be restrictions on the use of this device outside the EU. If applicable, check whether this device complies with local directives.
- This class 1 wireless device meets the essential requirements and other relevant conditions of R&TTE Directive 1999/5/EC. Be careful when using wireless devices if you have a pacemaker or are dependent on other life-saving, sensitive electronic equipment, because this device transmits radio signals.



For safety & liability information visit [www.trust.com/safety](http://www.trust.com/safety)

### **LIFE SUPPORT**

Never use Trust Smarthome products for life support systems or other applications where failures can have life-threatening consequences.

### **REPAIRS**

Do not try to repair this product yourself. The device contains no serviceable parts for the user.

### **WATER-RESISTANT**

This product is not water-resistant.

### **CLEANING**

Clean this product with a dry cloth. Do not use harsh chemicals, cleaning solvents or strong detergents.

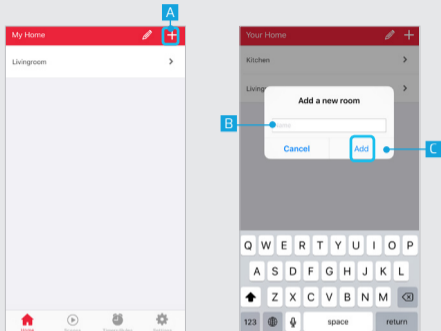
### **HANDLING**

Do not drop the device, bump the device against something or shake it. Rough handling can damage internal circuit boards and fine mechanics.

### **ENVIRONMENT**

The product should not be exposed to extreme heat or cold. This can damage the circuit boards and batteries or shorten its life.

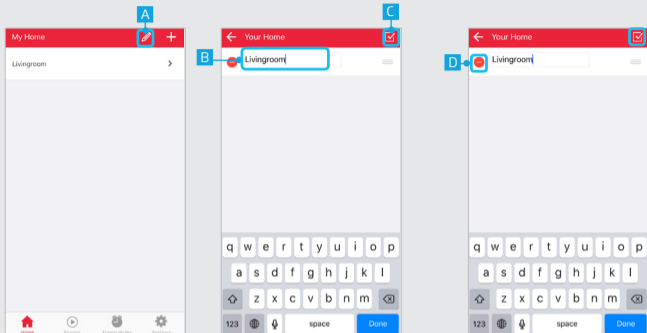
## 1.1



## 1.1 Add a room

- A** Press the + button at the top of the screen to add a new room
- B** Fill in a name for the room you want to add.
- C** Press the ADD button to save the new room

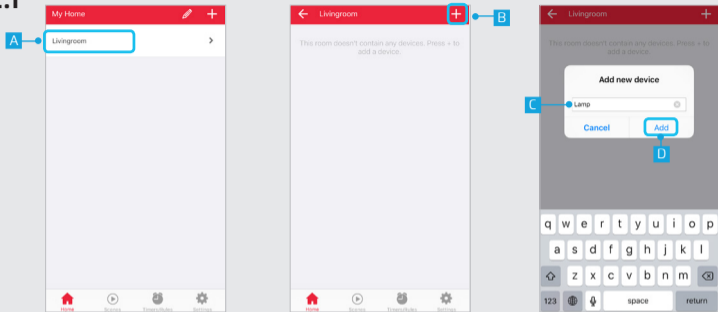
## 1.2



## 1.2 Edit/Delete room

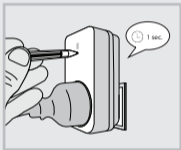
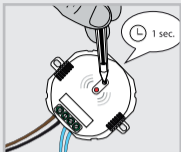
- A** To edit the name of a room press the pencil button at the top of the screen
- B** Press on the room name to begin editing.
- C** When you are done editing the name press the CONFIRM button.
- D** To delete a room press the DELETE button in front of the room when in editing mode. Press the CONFIRM button to go back to the room overview.

## 2.1



## 2.1 Connect a new device

- A** Press on a room name to open it.
- B** Press the + button at the top of the screen to add a new device.
- C** Enter a name for the device you want to add
- D** Press ADD

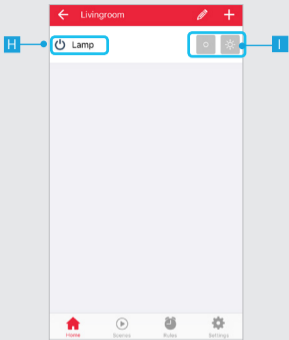


**E** Select the type of device you want to add to your room.

**⚠** If you already control your Trust Smart Home receiver with a remote control or wall switch continue to step 2.2. (Only for Startline products)

**F** Put your receiver in connect/learn mode. (Read the manual of the receiver on how to put it in connect/learn mode).

**G** When the receiver is in connect/learn mode press CONNECT.

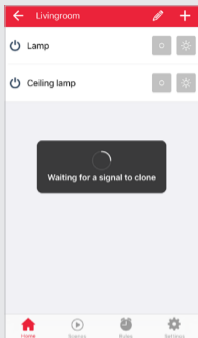
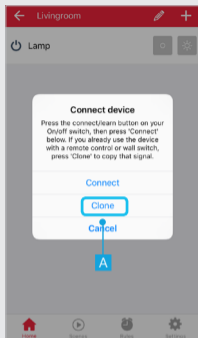


The receiver will go on and off twice to acknowledge the connection.

**H** The device is now added to your room. You can now control the device with the App.

**I** Use the buttons to control the device.





C

B

## 2.2 Connect an existing device (Clone)

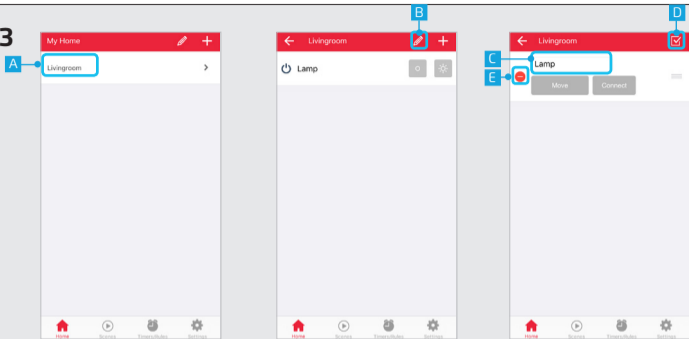
This step is recommended when you already control your Trust Smart Home receiver with a remote control or wall switch. (Only for Startline products)

**A** Press CLONE

**B** A dialogue is shown to clone the signal of the transmitter

**C** Give an ON signal on the transmitter that controls the device chosen in step 2.1e.

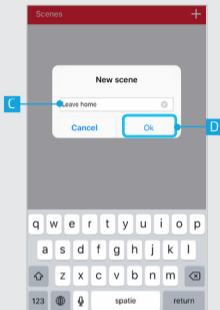
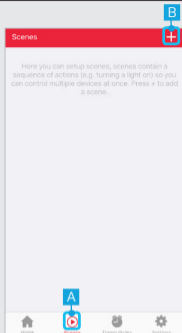
## 2.3



## 2.3 Edit/delete device

- A** To edit the name of a device first open the room which contains the device.
- B** Press the pencil button to enter edit mode.
- C** Press on the device name to begin editing.
- D** When you are done editing the name press the confirm button.
- E** To delete a device press the DELETE button in front of the device when in editing mode. Press the CONFIRM button to go back to the device overview.

## 3.1

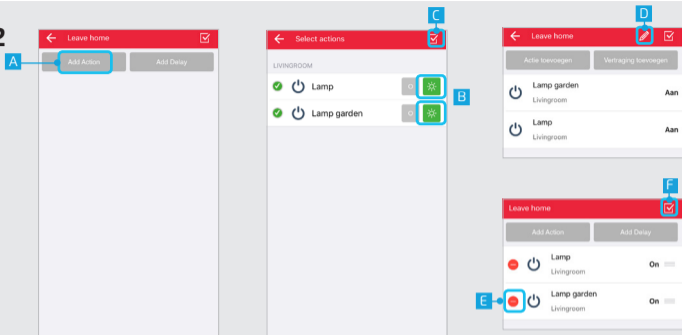


### 3.1 Add scenes

With a scene you can trigger different devices at the same time or with an delay.

- A** Press the scene button in the menu bar
- B** Press the + button at the top of the screen to add a new scene.
- C** Fill in a desired name for the scene.
- D** Press OK.

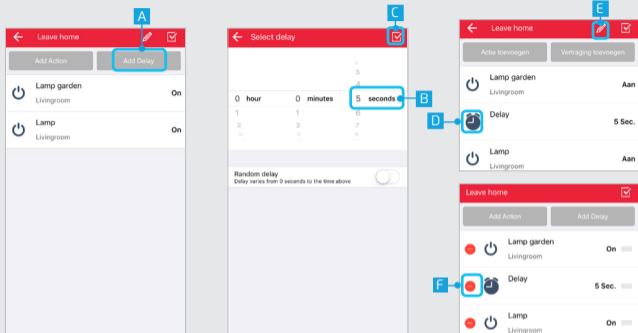
## 3.2



## 3.2 Add/delete actions

- A** Press the ADD ACTION button to add actions to the scene.
- B** Add the desired actions for the devices by pressing the buttons.
- C** Press CONFIRM to add the actions to the scene.
- D** By pressing the pencil button you enter edit mode.
- E** Delete an action by pressing the DELETE button.
- F** Press CONFIRM again to save the scene.

## 3.3

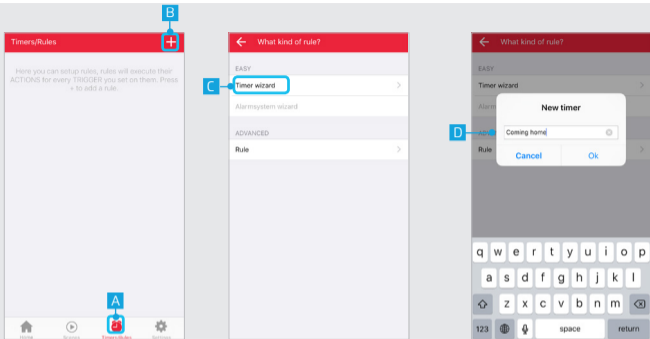


### 3.3 Add/delete delays

It is possible to add a delay between actions. First add an actions like described in step 3.2

- A** Press the ADD DELAY button.
- B** Choose how long the delay must be by selecting a time period.
- C** Press the CONFIRM button to add the delay to the scene
- D** The delay is now added to your scene.
- E** By pressing the pencil button you enter edit mode.
- F** Press the DELETE button to delete a delay.

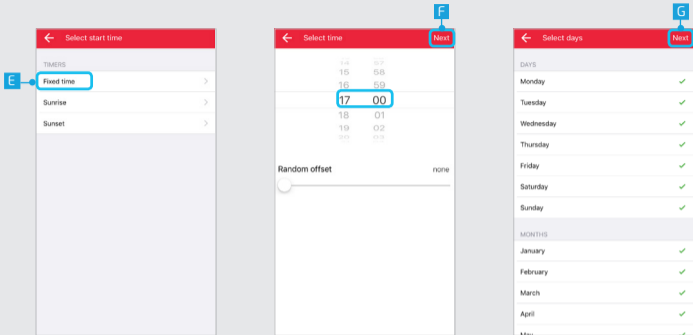
## 4.1



## 4.1 Configure timers

With a timer you can trigger one or multiple devices on a fixed time, Sunrise or Sunset.

- A** Press the Timers/Rules button in the menu bar
- B** Press the + button at the top of the screen to add a new timer.
- C** Press on Timer wizard.
- D** Fill in a name for your timer and press OK.

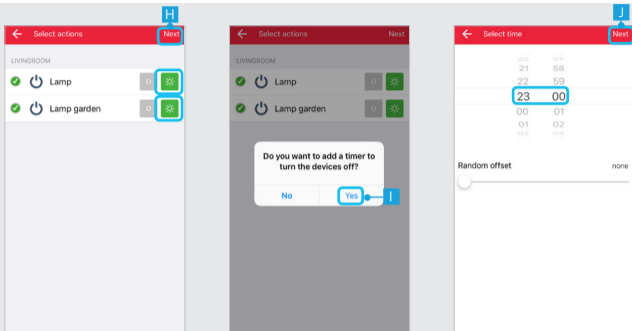


**E** Choose the kind of start time for the timer. (In this example a fixed time is used)

**F** Select the desired start time for the timer and press NEXT.

**G** Choose which days and in which months the timer should be triggered. (By default all days and months are selected). Press NEXT

## ICS-2000 INTERNET CONTROL STATION



**H** Choose the desired actions for when the timer is triggered. Press NEXT

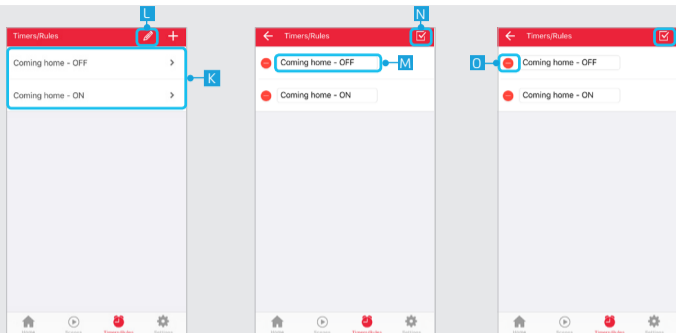
**I** A message appears asking if you want to add a timer to turn the devices OFF. Press Yes

**J** Select the time you want the devices to be turned OFF. Press NEXT

**K** The timers have been added to the overview.



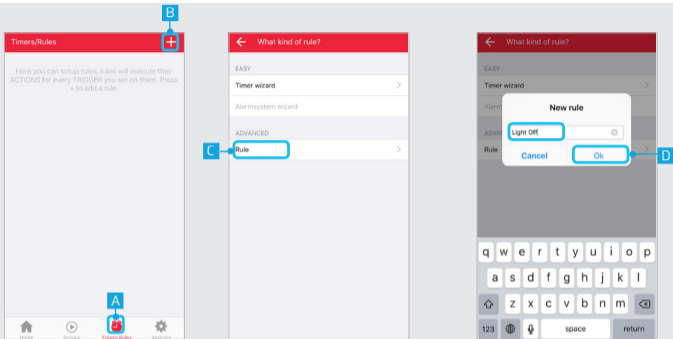
## 4.2



## 4.2 Edit/delete timer

- L** Press the pencil button the enter edit mode.
- M** Press on the timer name to begin editing.
- N** When you are done editing the name press the confirm button.
- D** To delete a timer press the DELETE button in front of the timer when in editing mode. Press the CONFIRM button to go back to the timers/rules overview.

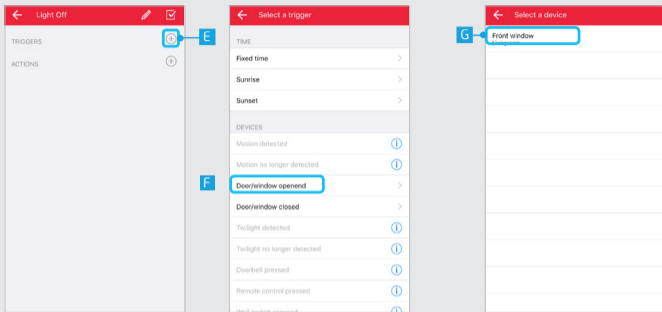
## 5.1



## 5.1 Configure rules

With a rule you can execute an action by choosing a trigger and action.

- A** Press the TIMERS/RULES button in the menu bar
- B** Press the + button at the top of the screen to add a new rule.
- C** Press on RULE.
- D** Fill in a name for your rule and press OK.

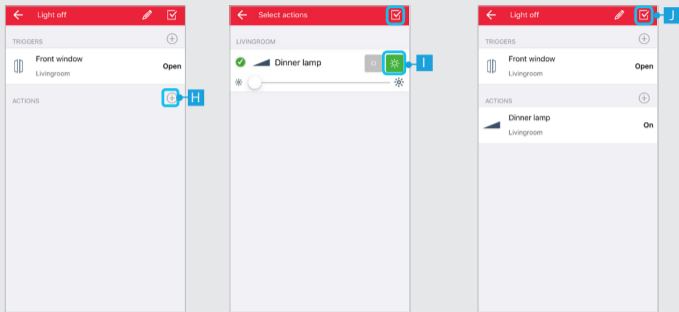


**E** Add a trigger by pressing the + button next to triggers.

**F** Select a trigger to use to execute an action. (In this example a contact sensor is used as trigger)

**G** Choose one of the linked devices

## ICS-2000 INTERNET CONTROL STATION



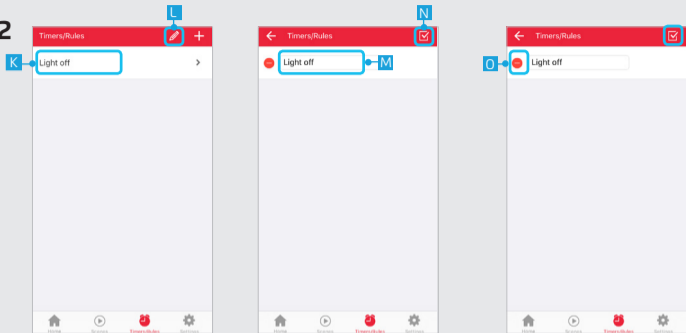
**H** Add an action by pressing the + button next to actions.

**I** An overview is shown of the available devices that have been linked. Choose an action for the desired devices. Press the CONFIRM button.

**J** The chosen triggers and actions are shown. Press the CONFIRM button again to save the rule.

**K** The rule has been added to the rule overview.

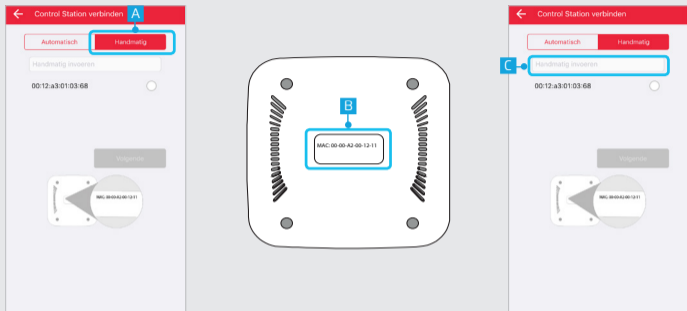
## 5.2



## 5.2 Edit/delete rule

- L** Press the pencil button to enter edit mode.
- M** Press on the rule name to begin editing.
- N** When you are done editing the name press the confirm button.
- O** To delete a rule press the DELETE button in front of the rule when in editing mode. Press the CONFIRM button to go back to the timers/rules overview.

6



## 6 Connect manually

- A** When there is no ICS-2000 found, it is possible to enter the MAC address manually during the registration process. Press the MANUAL button
- B** Look at the bottom of the ICS-2000 for the MAC address.
- C** Press the "Enter manually" field and enter the MAC address for your ICS-2000. Then press NEXT



If possible, dispose of this product at a recycling center. Do not dispose of this product with the household waste.

### **Warranty**

This product is covered by the legal warranty that applies to your country and it begins on the day of purchase. For additional information, visit: [www.trust.com/warranty/](http://www.trust.com/warranty/)

### **Copyright**

The contents of the "User manual" are subject to copyright protection. Without prior written permission, reproducing or copying is prohibited. Information in these documents is subject to change without prior notice. Check [www.trust.com/71110](http://www.trust.com/71110) for updates.

 For support and FAQ go to [trust.com/71110](http://trust.com/71110)


**Declaration of conformity**

Trust International B.V. declares that the TRUST SMARTHOME-product:

model:	Octopus Control station
item number:	71110
intended use:	Indoor

is in compliance with the essential requirements and other relevant provisions of the following directives: EMC Directive (2004/108/EC), Low Voltage Directive (2006/95/EC), ROHS Directive (2011/65/EC), R&TTE Directive (1999/5/EC). The product is compatible with the following norms/standards:

The product is compatible with the following norms/standards:

EN.300.328  
 EN.300.220  
 EN 55022  
 EN 55024  
 ETSI-EN 301 489-17  
 NEN-EN-IEC 60950-1  
 EN 50581:2012

Manufacturer/Authorized representative,



H. Donker, Procurement Director

Dordrecht, 1 February 2016

**EUROTEC** People • Technology • Solutions  
HVAC • Refrigeration • Electrical • Measurement

**Trust International B.V.**  
 LAAN VAN BARCELONA 600  
 3317DD DORDRECHT  
 NETHERLANDS  
 www.trust.com