

**Trust** | SMART Home

START-LINE  
TRANSMITTER AWST-8802

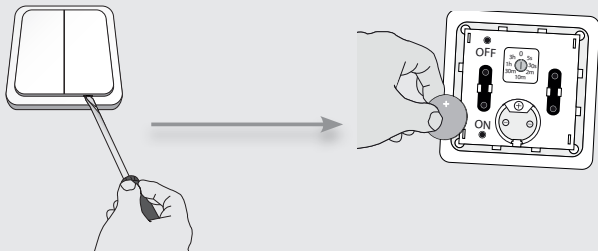
USER MANUAL  
MULTI LANGUAGE



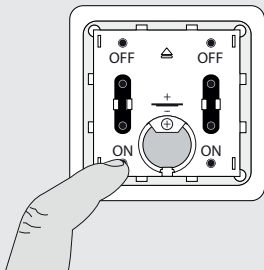
Item 71012 Version 1.0  
Visit [www.trust.com](http://www.trust.com)  
for the latest instructions

DOUBLE WIRELESS WALL SWITCH

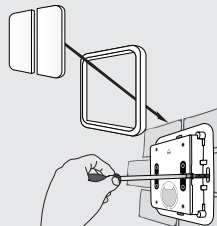
1



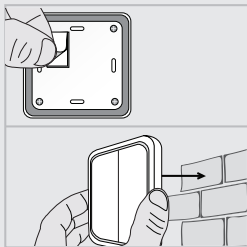
2



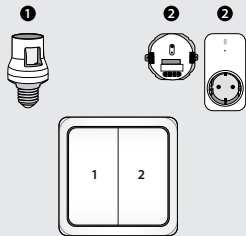
3



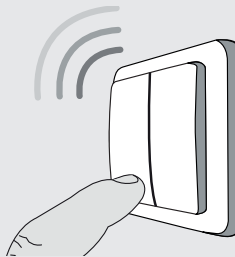
4



5



6-8





## AWST-8802 DOUBLE WALL SWITCH

### 1. Installing battery

1. Open the wall switch with a screwdriver.
2. Insert the supplied 3V CR2032 lithium battery in the holder with the correct plus/minus orientation.

### 2. Learn code to Trust SmartHome receiver

To control 1 or several receivers simultaneously, assign the transmitter code to 1 or more receivers. Read the manual of the receiver for the code learning procedure. Send an ON-signal by pressing the [ON] button while the learn mode is active.

### 3. Affix the transmitter using screws

1. Screw the base of the wireless wall switch onto a flat surface, e.g. a wall.
2. Press the frame back onto the base and press the buttons onto the frame.

### 4. Affix the transmitter using double-sided tape

1. Apply double-sided tape to the back of the wireless switch.
2. Stick the wireless wall switch onto a flat surface, e.g. a wall.

### 5. Control 1 or multiple Trust SmartHome receivers

You can assign the AWST-8802 to one receiver or you can assign the AWST-8802 to multiple receivers, to control them simultaneously. Read the receivers manual for the code learning procedure.

### 6. Manual operation of a Trust SmartHome on/off receiver

1. Press ON once to switch the receiver on.
2. Press OFF to switch the receiver off.

### 7. Manual operation of a Trust SmartHome dimmer receiver

1. Press ON once to switch the receiver on.
2. Press ON again to activate the dim-mode. The light will slowly dim up and down.
3. Press ON a third time to select the desired light intensity.
4. Press OFF to switch the receiver off.

## 8. Manual operation of a Trust SmartHome electric screens receiver

1. Send an ON-signal to raise the screen.
2. Send an ON-signal again to stop.
3. Send an OFF-signal to lower the screen.
4. Send an OFF-signal again to stop.

Read the receivers manual to reverse the direction of the screen, if needed.

**Trust** | SMART Home

START-LINE  
TRANSMITTER AWST-8802

IMPORTANT INFORMATION  
MULTI LANGUAGE



Item 71012 Version 1.0  
Visit [www.trust.com](http://www.trust.com)  
for the latest instructions

DOUBLE WALL SWITCH

  
**EN** AWST-8802 DOUBLE WALL SWITCH

Read these simple guidelines. Not following them may be dangerous and faulty installation invalidate any warranty that may apply to this product.

**COMPATIBILITY**

This transmitter works with all Trust SmartHome receivers.

**FUNCTIONALITY**

On/off, dim function (only if the receiver is a dimmer) and up/down/stop (electric screens receiver only)

**TECHNICAL SPECIFICATIONS**

- Battery 1x 3 Volt CR2032 lithium
- RF frequency 433.92 MHz
- RF range Up to 30 m indoor/70 m outdoor (optimal conditions)
- Channels 2

**REMARKS**

- Every individual Trust SmartHome dimmer has a different dimming speed. If possible, use separate units for each dimmer receiver to avoid non-simultaneous dimming.

**WIRELESS RADIO SIGNAL**

- The 433.92 MHz radio signal passes through walls, windows and doors.
- Indoor range: up to 30 m. Outdoor range: up to 70 m. (optimal conditions)
- The range is strongly dependent on local conditions, such as the presence of metals. For example, the thin metal coating in Low-emissivity (Low-E) glass has a negative impact on the range of radio signals.
- There may be restrictions on the use of this device outside the EU. If applicable, check whether this device complies with local directives.

**LEGAL INFORMATION**

CE: Trust declares this device complies with the Directives as listed in Section 2 of this document.

WEEE: Dispose of the device at a recycling centre. More information: [www.trust.com](http://www.trust.com)

Warranty information: [www.trust.com/warranty](http://www.trust.com/warranty)

**BATTERY**

Remove the batteries if the product will not be used for an extended period. Extreme temperatures reduce the capacity and lifetime of the battery.

Replace the battery when the range of the transmitter starts to decrease.

Do not crush, burn or shred batteries. Dispose of batteries according to local regulations. Please recycle when possible. Do not dispose as household waste.

**LIFE-SUPPORT**

Never use Trust SmartHome products for life-support systems or other applications in which equipment malfunctions can have life-threatening consequences.

**INTERFERENCE**

All wireless devices may be subject to interference, which could affect performance. The minimum distance between 2 receivers should be at least 50 cm.

**REPAIRING**

Do not attempt to repair this product. There are no user-serviceable parts inside.

**WATER-RESISTANCE**

This product is not water-resistant. Keep it dry. Moisture will corrode the inner electronics.

**CLEANING**

Use a dry cloth to clean this product. Do not use harsh chemicals, cleaning solvents, or strong detergents.

**HANDLING**

Do not drop, knock, or shake the device. Rough handling can break internal circuit boards and fine mechanics.

**ENVIRONMENT**

Do not expose the product to excessive heat or cold, as it can damage or shorten the life of electronic circuit boards and batteries.



**CE Declaration of Conformity**

Trust International B.V. declares that this TRUST SMART Home-product:

Model: AWST-8802 DOUBLE WALL SWITCH  
Item number: 71012  
Intended use: Indoor

is in compliance with the essential requirements and other relevant provisions of the following directives: EMC Directive (108/2004/EC), Low Voltage Directive (95/2006/EC), ROHS Directive (65/2011/EC), R&TTE Directive (5/1999/EC). The product is compatible with the following norms/standards:

EN 300 220-1 V2.4.1 (2012-05)  
EN 300 220-2 V2.4.1 (2012-05)  
EN 301 489-1 V1.9.2 (2011-09)  
EN 301 489-3 V1.6.1 (2013-08)  
EN 61000-4-2:2009  
EN 61000-4-3:2006 +A1 :2008 +A2:2010  
EN 62479:2010  
EN 60669-2-1:2004 +A1 :2009 + A12:2010  
EN 60669-2-2:2006  
EN 60669-1:1999 + A1 :2002 + A2:2008  
EN 50581:2012

**TRUST INTERNATIONAL B.V.**  
LAAN VAN BARCELONA 600  
3317DD DORDRECHT  
NEDERLAND  
[www.trust.com](http://www.trust.com)

Authorized representative



H. Donker, Procurement Director  
Dordrecht, 16-11-2015

**EUROTEC** *People • Technology • Solutions*  
HVAC • Refrigeration • Electrical • Measurement