

Trust | SMART Home

START-LINE
TRANSMITTER AWST-8800

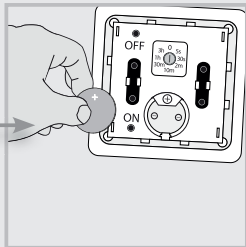
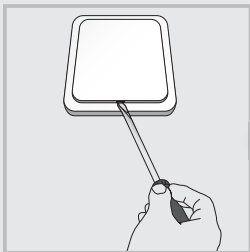
USER MANUAL
MULTI LANGUAGE



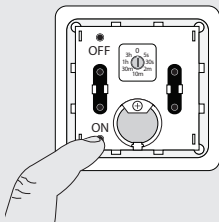
Item 71075 Version 1.0
Visit www.trust.com
for the latest instructions

WIRELESS WALL SWITCH

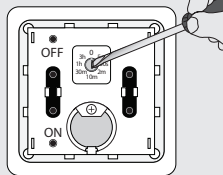
1



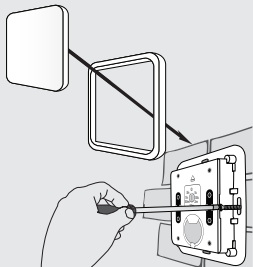
2



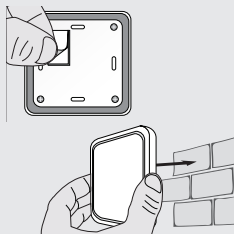
3



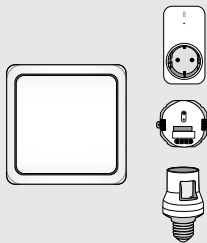
4



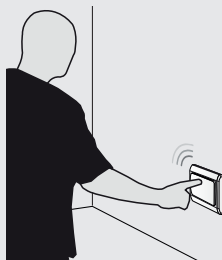
5



6



7-9



1. Installing battery

1. Open the wall switch with a screwdriver.
2. Insert the supplied 3V CR2032 lithium battery in the holder with the correct plus/minus orientation.

2. Learn code to Trust SmartHome receiver

To control 1 or several receivers simultaneously, assign the transmitter code to 1 or more receivers. Read the receiver's manual for the code learning procedure. Send an ON-signal by pressing the [ON] button while the learn mode is active.

3. Set the switch-off delay time

In position [0], the light stays on until you send an off-signal manually. By setting the switch to 5s/30s/2m/10m/30m/1h/3h, the transmitter will automatically send an OFF-signal after the selected time (5 seconds/... /3 hours). If you press ON in the meantime, the wall switch will restart the countdown.

4. Affix the transmitter using screws

1. Screw the base of the wireless wall switch onto a flat surface, e.g. a wall.
2. Press the frame back onto the base and press the button onto the frame.

5. Affix the transmitter using double-sided tape

1. Apply double-sided tape to the back of the wireless switch.
2. Stick the wireless wall switch onto a flat surface, e.g. a wall.

6. Control 1 or multiple Trust SmartHome receivers

You can assign the AWST-8800 to one receiver or you can assign the AWST-8800 to multiple receivers, to control them simultaneously. Read the receivers manual for the code learning procedure.

7. Manual operation of a Trust SmartHome on/off receiver

1. Press ON once to switch the receiver on.
2. Press OFF to switch the receiver off.

8. Manual operation of a Trust SmartHome dimmer receiver

1. Press ON once to switch the receiver on.
2. Press ON again to activate the dim-mode. The light will slowly dim up and down.
3. Press ON a third time to select the desired light intensity.
4. Press OFF to switch the receiver off.

9. Manual operation of a Trust SmartHome electric screens receiver

1. Send an ON-signal to raise the screen.
2. Send an ON-signal again to stop.
3. Send an OFF-signal to lower the screen.
4. Send an OFF-signal again to stop.

Read the receivers manual to reverse the direction of the screen, if needed.

IMPORTANT INFORMATION
MULTI LANGUAGE



Item 71075 Version 1.0
Visit www.trust.com
for the latest instructions

WIRELESS WALL SWITCH

EN AWT-8800 WIRELESS WALL SWITCH

Read these simple guidelines. Not following them may be dangerous and faulty installation invalidate any warranty that may apply to this product.

COMPATIBILITY

This transmitter works with all Trust SmartHome receivers.

FUNCTIONALITY

On/off, dim function (only if the receiver is a dimmer) and up/down/pause (supported by electric screens receiver only).

TECHNICAL SPECIFICATIONS

- Battery 1x 3 Volt CR2032 lithium
- RF frequency 433.92 MHz
- RF range Up to 30 m indoor/70 m outdoor (optimal conditions)
- Switch-off delay 5/30 seconds, 2/10/30 minutes, 1/3 hours

REMARKS

- Every Trust SmartHome dimmer receiver has a different dimming speed. If possible, use one AWT-8800 for each dimmer receiver to avoid non-simultaneous dimming.

WIRELESS RADIO SIGNAL

- The 433.92 MHz radio signal passes through walls, windows and doors.
- Indoor range: up to 30 m. Outdoor range: up to 70 m. (optimal conditions)
- The range is strongly dependent on local conditions, such as the presence of metals. For example, the thin metal coating in Low-emissivity (Low-E) glass has a negative impact on the range of radio signals.
- There may be restrictions on the use of this device outside the EU. If applicable, check whether this device complies with local directives.

BATTERY

Remove the battery if the product will not be used for an extended period. Extreme temperatures reduce the capacity and lifetime of the battery. Replace the battery when the reach of the transmitter starts to decrease.

Do not crush, burn or shred batteries. Dispose of batteries according to local regulations. Please recycle when possible. Do not dispose as household waste.

LIFE-SUPPORT

Never use Trust SmartHome products for life-support systems or other applications in which equipment malfunctions can have life-threatening consequences.

INTERFERENCE

All wireless devices may be subject to interference, which could affect performance. The minimum distance between 2 receivers should be at least 50 cm.

LEGAL INFORMATION

CE: Trust declares this device complies with the Directives as listed in Section 2 of this document.
WEEE: Dispose of the device at a recycling centre. More information: www.trust.com
Warranty information: www.trust.com/warranty

REPAIRING

Do not attempt to repair this product. There are no user-serviceable parts inside.

WATER-RESISTANCE

This product is not water-resistant. Keep it dry. Moisture will corrode the inner electronics.

CLEANING

Use a dry cloth to clean this product. Do not use harsh chemicals, cleaning solvents, or strong detergents.

HANDLING

Do not drop, knock, or shake the device. Rough handling can break internal circuit boards and fine mechanics.

ENVIRONMENT

Do not expose the product to excessive heat or cold, as it can damage or shorten the life of electronic circuit boards and batteries.

CE Declaration of Conformity

Trust International B.V. declares that this TRUST SMART Home-product:

Model:	AWST-8800 WIRELESS WALL SWITCH
Item number:	71075
Intended use:	Indoor

is in compliance with the essential requirements and other relevant provisions of the following directives: EMC Directive (108/2004/EC), Low Voltage Directive (95/2006/EC), ROHS Directive (65/2011/EC), R&TTE Directive (5/1999/EC).

The product is compatible with the following norms/standards:

EN 301 489-1 V1.9.2 (2011-09)
EN 301 489-3 V1.6.1 (2013-08)
EN 55022: 2010+AC:2011
EN 300 220-1 V2.4.1 (2012-05)
EN 300 220-2 V2.4.1 (2012-05)
EN 62479:2010
EN 61000-4-3 : 2006+A1: 2008+A2: 2010
EN 60950-1:2006+A11:2009+A1:2010+A12:2011+A2:2013
EN 50581:2012

Authorized representative



H. Donker, Procurement Director
Dordrecht, 2-11-2015

EUROTEC People • Technology • Solutions
HVAC • Refrigeration • Electrical • Measurement

TRUST SMART Home
LAAN VAN BARCELONA 600
3317DD DORDRECHT
NEDERLAND
www.trust.com