

**Trust** | SMART Home

START-LINE  
TRANSMITTER AWST-6000

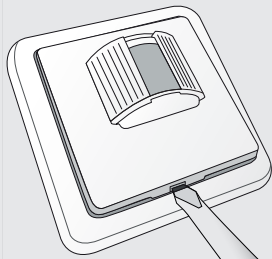
USER MANUAL  
MULTI LANGUAGE



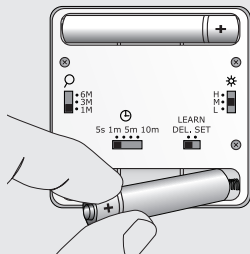
Item 71013 Version 1.0  
Visit [www.trust.com](http://www.trust.com)  
for the latest instructions

WIRELESS MOTION SENSOR

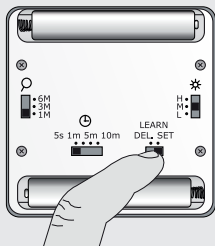
1



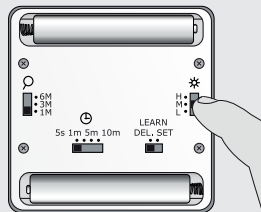
2



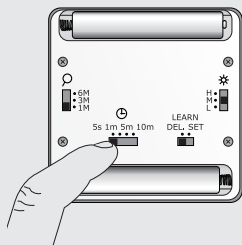
3



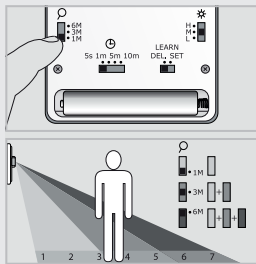
4



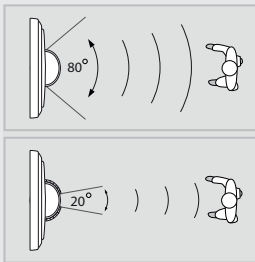
5



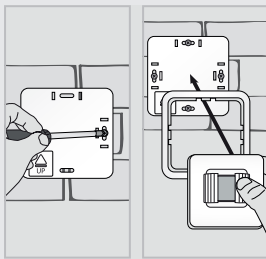
6



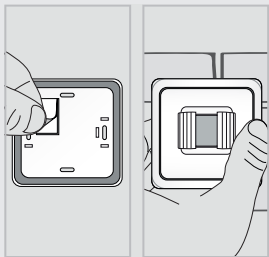
7



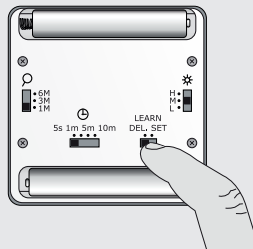
8



9



10



### 1. Open the motion sensor

Use a thin screwdriver to detach the sensor from the frame.

### 2. Install transmitter batteries

Place 2x 1,5V AAA alkaline batteries in the battery compartments. The polarity should match the symbols on the holder.

### 3. Assign code to a Trust SmartHome receiver

Assign this transmitter to the memory of one or multiple receivers, by sliding the LEARN switch from [DEL] to [SET] to send an ON-signal. Read the receiver's manual for the code learning procedure.

### 4. Set light sensitivity

Slide the [☉] switch to select 1 of the 3 light sensitivity levels. [H]: Sensor is always active. [M]: Sensor is active when the environment brightness is less than 20 lux (late afternoon). [L]: Sensor is active when the environment brightness is less than 10 lux (late evening). If you want to control chime ACDB-6500C, always choose [H].

### 5. Set switch-off delay

When no more motion is detected, the transmitter automatically sends an OFF-signal after 5 seconds or 1/5/10 minutes.

### 6. Set detection range

Slide the [⊙] switch to select 1 of the 3 detection ranges.

[1M]: 1-3 meters

[3M]: 1-5 meters

[6M]: 1-7 meters

## 7. Set detection angle

The horizontal detection angle of the sensor is maximum 80° and minimum 20°. Remove, reposition or adjust the size of the plastic screens to change the detection angle. Next, affix the transmitter using screws or double-sided tape.

## 8. Affix the transmitter using screws

1. Screw the base of the wireless motion sensor onto a flat surface, e.g. a wall.
2. Press the frame back onto the base and press the sensor into the frame.
3. The sensor needs 30 seconds to analyze its environment, before it becomes operational.

## 9. Affix the transmitter using double-sided tape

1. Apply double-sided tape to the back of the wireless motion sensor.
2. Stick the wireless motion sensor onto a flat surface, e.g. a closet.
3. The sensor needs 30 seconds to analyze its environment, before it becomes operational.

## 10. Delete code from Trust SmartHome receiver memory

Read the receiver's manual for the single code deletion procedure. Slide the LEARN switch from [SET] to [DEL] to send an OFF-signal.



START-LINE  
TRANSMITTER AWST-6000

IMPORTANT INFORMATION  
MULTI LANGUAGE



Item 71013 Version 1.0  
Visit [www.trust.com](http://www.trust.com)  
for the latest instructions

WIRELESS MOTION SENSOR



## AWST-6000 WIRELESS MOTION SENSOR

Read these simple guidelines. Not following them may be dangerous and faulty installation will invalidate any warranty that may apply to this product.

### COMPATIBILITY

This transmitter works with all Trust SmartHome receivers.

### FUNCTIONALITY

Indoor motion sensor for switching 1 or more Trust SmartHome receivers on/off. Also compatible with the Trust SmartHome doorbell chime.

### TECHNICAL SPECIFICATIONS

- |                              |   |
|------------------------------|---|
| • Batteries                  | 2x 1,5 Volt AAA alkaline                            |
| • RF frequency               | 433.92 MHz  |
| • RF range                   | Up to 30 m indoor/70 m outdoor (optimal conditions) |
| • Detection range            | Up to 7 m   |
| • Horizontal detection angle | 20° up to 80°                                       |
| • Vertical detection angle   | 65°   |
| • Switch-off delays          | 4 (5 seconds, 1/5/10 minutes)                       |
| • Light level settings       | 3 (High, Medium, Low)                               |

### REMARKS

- When changing the light sensitivity [H/M/L], the sensor needs 30 seconds to become operational again.
- When light sensitivity setting [H] is selected, the switch-off delay function is disabled. The motion sensor sends an OFF-signal directly when no more motion is detected.
- Avoid combining this wireless motion sensor with Trust SmartHome dimmer receivers, because the dim-mode can be activated when the dimmer receives a second on-signal.

### WIRELESS RADIO SIGNAL

- The 433.92 MHz radio signal passes through walls, windows and doors.
- Indoor range: up to 30 m. Outdoor range: up to 70 m. (optimal conditions)
- The range is strongly dependent on local conditions, such as the presence of metals. For example, the thin metal coating in Low-emissivity (Low-E) glass has a negative impact on the range of radio signals.
- There may be restrictions on the use of this device outside the EU. If applicable, check whether this device complies with local directives.



**BATTERY**

Remove the batteries if the product will not be used for an extended period. Extreme temperatures reduce the capacity and lifetime of the battery.

Replace the battery when the LED indicator in the sensor eye starts flashing continuously or when the reach of the transmitter starts to decrease.

Do not crush, burn or shred batteries.  
Dispose of batteries according to local regulations.  
Please recycle when possible. Do not dispose as household waste.

**LIFE-SUPPORT**

Never use Trust SmartHome products for life-support systems or other applications in which equipment malfunctions can have life-threatening consequences.

**INTERFERENCE**

All wireless devices may be subject to interference, which could affect performance.  
The minimum distance between 2 receivers should be at least 50 cm.

**LEGAL INFORMATION**

CE: Trust declares this device complies with the Directives as listed in Section 2 of this document.  
WEEE: Dispose of the device at a recycling centre. More information: [www.trust.com](http://www.trust.com)  
Warranty information: [www.trust.com/warranty](http://www.trust.com/warranty)

**REPAIRING**

Do not attempt to repair this product.  
There are no user-serviceable parts inside.

**WATER-RESISTANCE**

This product is not water-resistant.  
Keep it dry. Moisture will corrode the inner electronics.

**CLEANING**

Use a dry cloth to clean this product. Do not use harsh chemicals, cleaning solvents, or strong detergents.

**HANDLING**

Do not drop, knock, or shake the device.  
Rough handling can break internal circuit boards and fine mechanics.

**ENVIRONMENT**

Do not expose the product to excessive heat or cold, as it can damage or shorten the life of electronic circuit boards and batteries.

**CE Declaration of Conformity**

Trust International B.V. declares that this TRUST SMART Home-product:

Model: AWST-6000 WIRELESS MOTION SENSOR  
Item number: 71013  
Intended use: Indoor

is in compliance with the essential requirements and other relevant provisions of the following directives: EMC Directive, Low Voltage Directive and R&TTE Directive.  
The product is compatible with the following norms/standards:

EN 300 220-1 V2.4.1 (2012-05)  
EN 300 220-2 V2.4.1 (2012-05)  
EN 301 489-1 V1.9.2 (2011-09)  
EN 301 489-3 V1.6.1 (2013-08)  
EN 61000-4-2:2009  
EN 61000-4-3:2006 +A1:2008 +A2:2010  
EN 62479:2010  
EN 60730-1:2011

Authorized representative



H. Donker, Procurement Director  
Dordrecht, 1-1-2015

**EUROTEC** People • Technology • Solutions  
HVAC • Refrigeration • Electrical • Measurement

**TRUST SMART Home**  
LAAN VAN BARCELONA 600  
3317DD DORDRECHT  
NEDERLAND  
www.trust.com