

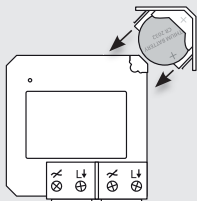
**USER MANUAL  
MULTI LANGUAGE**



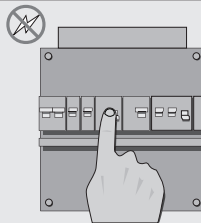
Item 71048 Version 1.0  
Visit [www.trust.com](http://www.trust.com)  
for the latest instructions

**MINI BUILD-IN TRANSMITTER**

1a



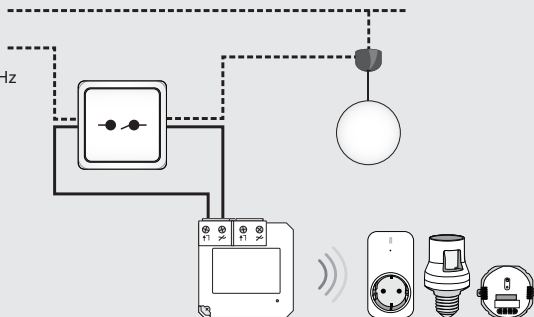
1b



2

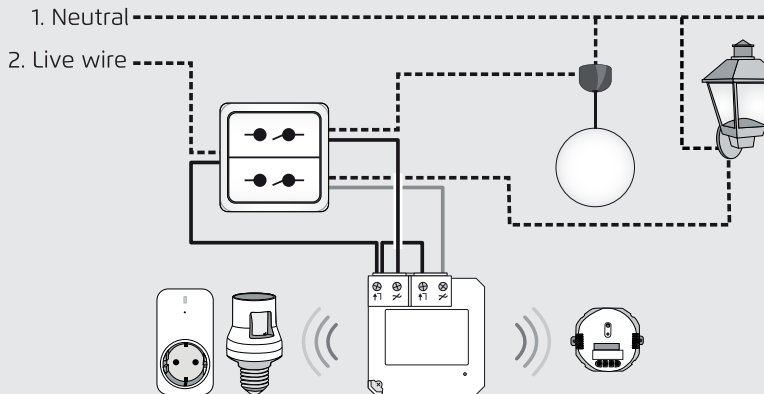
1. Neutral
2. Live wire

230V~50Hz

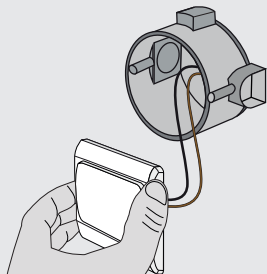


3

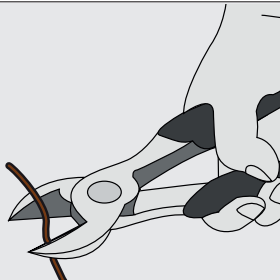
230V~50Hz



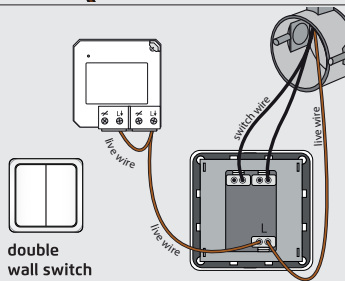
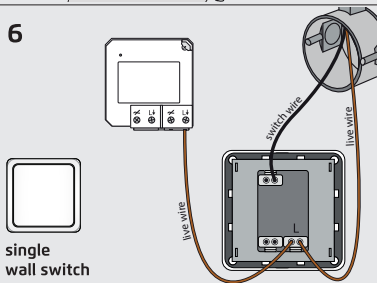
4



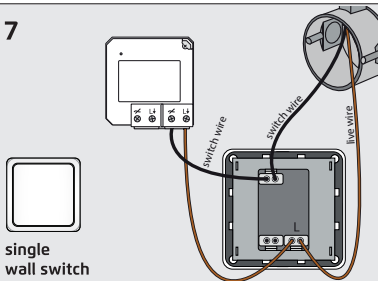
5



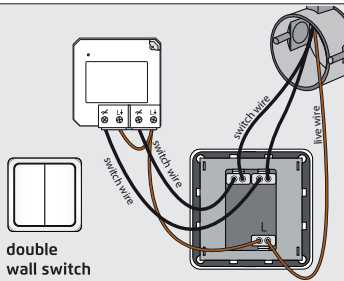
6



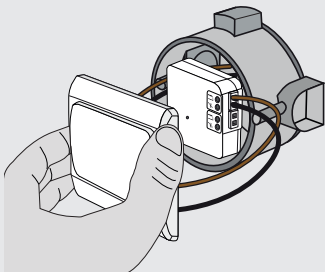
7



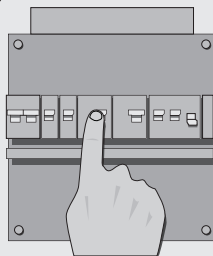
double wall switch



8



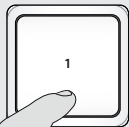
9



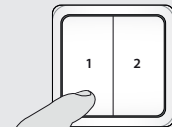
10



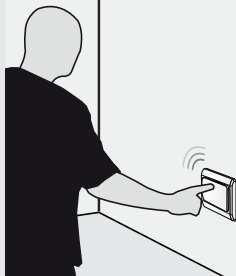
single  
wall switch



double  
wall switch



11





## EN AWMT-230 MINI BUILD-IN TRANSMITTER

---

### 1a. Installing battery

1. Slide the battery holder out of the mini built-in transmitter.
2. Insert the supplied battery into the recess in the battery holder.
3. Make sure that the + and - terminals of the battery match the + and - symbols on the battery holder.
4. Slide the battery holder back into the mini built-in transmitter.

### 1b. Switch off the mains power (electric meter box) before installing this product

### 2. Installation behind a single wall switch (without multiway switching).

[1] Neutral wire. [2] Live wire.

### 3. Installation behind a double wall switch (without multiway switching).

[1] Neutral wire. [2] Live wire.



### 4. Remove the existing light switch

Detach the existing light switch and leave the wires connected if possible. The AWMT-230 can only be used with switches that are used for lighting and the installation box needs to be at least 40 mm deep.

### 5. Cut wire

Cut 1 piece of live wire (brown) and 1 piece of switch wire (black), or use the 2 white wires that are included in the package.

### 6. Connect live wire to [L↕]

Connect the piece of live wire (brown/white) to the [L↕] contact on the AWMT-230 and on the [L] contact of the light switch.

**7. Connect switch wire to [X]**

Connect the piece of (black) switch wire to the [X] contact. Tighten the clamping screws to secure the wires. Contact an electrician when in doubt about wire colors.

**8. Mount the transmitter in the box**

Mount the transmitter in the wall box and put the original wall switch back in place.

**9. Switch on the mains power (electric meter box) to continue the installation**

Shock hazard! Do not contact any exposed wiring. Only touch the plastic housing of this product.

**10. Control 1 or multiple Trust SmartHome receivers**

To control a single receiver or several receivers simultaneously, assign the preferred button of the AWMT-230 to the memory of the receiver(s). Read the receiver's manual for the code learning procedure.

**11. Manual operation of a Trust SmartHome on/off receiver**

1. Press ON once to switch the receiver on.
2. Press OFF to switch the receiver off.



IMPORTANT INFORMATION  
MULTI LANGUAGE



Item 71048 Version 1.0

Visit [www.trust.com](http://www.trust.com)  
for the latest instructions

MINI BUILD-IN TRANSMITTER



## AWMT-230 MINI BUILD-IN TRANSMITTER

---

Read these simple guidelines. Not following them may be dangerous and faulty installation invalidate any warranty that may apply to this product.

### COMPATIBILITY

This transmitter works with all Trust SmartHome receivers.

### FUNCTIONALITY

Install this mini transmitter behind an existing light switch to control your Trust SmartHome receivers wirelessly. The existing light will also be switched.

### TECHNICAL SPECIFICATIONS

- Battery 1x 3 Volt CR2032 lithium
- RF frequency 433.92 MHz
- RF range Up to 30 m indoor/70 m outdoor (optimal conditions)

### WIRELESS RADIO SIGNAL

- The 433.92 MHz radio signal passes through walls, windows and doors.
- Indoor range: up to 30 m. Outdoor range: up to 70 m. (optimal conditions)
- The range is strongly dependent on local conditions, such as the presence of metals. For example, the thin metal coating in Low-emissivity (Low-E) glass has a negative impact on the range of radio signals.
- There may be restrictions on the use of this device outside the EU. If applicable, check whether this device complies with local directives.

**INSTALLATION**

Wire colors may vary per country.  
Contact an electrician when in doubt about wiring.  
This product is not suitable if the existing light switch is interconnected to other light switches for multiway switching.

**BATTERY**

Remove the battery if the product will not be used for an extended period. Extreme temperatures reduce the capacity and lifetime of the battery.  
Replace the battery when the reach of the transmitter starts to decrease.

Do not crush, burn or shred batteries. Dispose of batteries according to local regulations. Please recycle when possible. Do not dispose as household waste.

**LIFE-SUPPORT**

Never use Trust SmartHome products for life-support systems or other applications in which equipment malfunctions can have life-threatening consequences.

**INTERFERENCE**

All wireless devices may be subject to interference, which could affect performance.  
The minimum distance between 2 receivers should be at least 50 cm.

**LEGAL INFORMATION**

CE: Trust declares this device complies with the Directives as listed in Section 2 of this document.  
WEEE: Dispose of the device at a recycling centre. More information: [www.trust.com](http://www.trust.com)  
Warranty information: [www.trust.com/warranty](http://www.trust.com/warranty)

**REPAIRING**

Do not attempt to repair this product. There are no user-serviceable parts inside.

**WATER-RESISTANCE**

This product is not water-resistant. Keep it dry.  
Moisture will corrode the inner electronics.

**CLEANING**

Use a dry cloth to clean this product. Do not use harsh chemicals, cleaning solvents, or strong detergents.

**HANDLING**

Do not drop, knock, or shake the device.  
Rough handling can break internal circuit boards and fine mechanics.

**ENVIRONMENT**

Do not expose the product to excessive heat or cold, as it can damage or shorten the life of electronic circuit boards and batteries.

**CE Declaration of Conformity**

Trust International B.V. declares that this TRUST SMART Home-product:

Model: AWMT-230 MINI BUILD-IN TRANSMITTER  
Item number: 71048  
Intended use: Indoor

is in compliance with the essential requirements and other relevant provisions of the following directives: EMC Directive (108/2004/EC), Low Voltage Directive (95/2006/EC), ROHS Directive (65/2011/EC), R&TTE Directive (5/1999/EC). The product is compatible with the following norms/standards:

EN 301 489-1 V1.9.2 (2011-09)  
EN 301 489-3 V1.6.1 (2013-06)  
EN 300 220-1 V2.4.1 (2012-05)  
EN 300 220-2 V2.4.1 (2012-05)  
EN 62479:2010  
EN 61000-3-2: 2006 +A1 :2009+A2 :2009 Class A  
EN 61000-3-3: 2013  
EN 61000-4-3: 2006 +A1: 2008 +A2: 2010  
EN 60950-1:2006+A11:2009+A1:2010+A12:2011+A2:2013  
EN 50581:2012

Authorized representative



H. Donker, Procurement Director  
Dordrecht, 06-01-2015

**EUROTEC** People • Technology • Solutions  
HVAC • Refrigeration • Electrical • Measurement

**TRUST INTERNATIONAL B.V.**  
LAAN VAN BARCELONA 600  
3317DD DORDRECHT  
NEDERLAND  
[www.trust.com](http://www.trust.com)