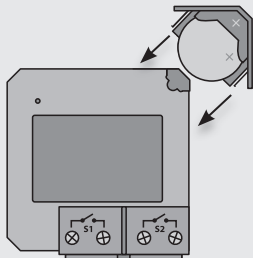
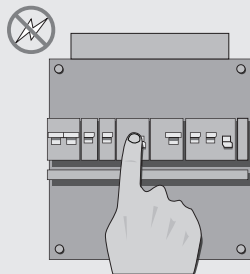
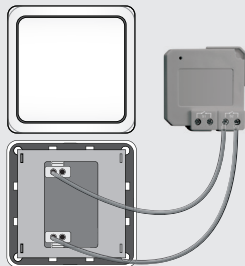
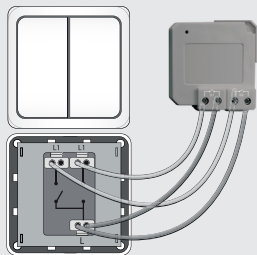


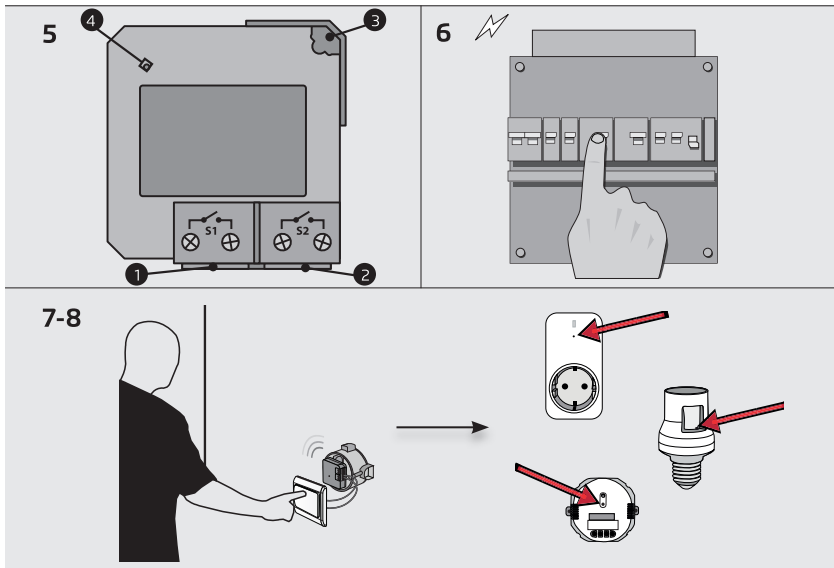
USER MANUAL
MULTI LANGUAGE



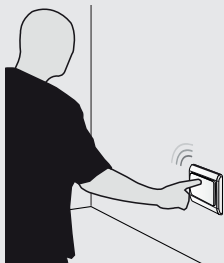
Item 71079 Version 1.0
Visit www.trust.com
for the latest instructions

MINI BUILD-IN TRANSMITTER

1**2****3****4**



9-11



1. Installing battery

1. Slide the battery holder out of the mini built-in transmitter.
2. Insert the supplied battery into the recess in the battery holder.
3. Make sure that the + and - terminals of the battery match the + and - symbols on the battery holder.
4. Slide the battery holder back into the mini built-in transmitter.

2. Switch off the mains power (electric meter box)

3. Installation behind a single wall switch (without multiway switching).

Do not connect to mains power, only connect the wall switch with the grey cables of the AWMT-003! When both wires are connected an ON signal will be transmitted and the LED will light up. When one of the wires is disconnected an OFF signal will be transmitted. When the wires are the LED will light up.

4. Installation behind a double wall switch (without multiway switching).

Do not connect to mains power, only connect the wall switch with the grey cables of the AWMT-003. When both wires are connected an ON signal will be transmitted and the LED will light up. When one of the wires is disconnected an OFF signal will be transmitted. When the wires are the LED will light up. The transmitter has 2 separate channels, this way you can use both buttons of the wall switch separately.

5.
 1. Channel 1 connections
 2. Channel 2 connections
 3. Battery holder
 4. LED signal indicator

6. Switch on the mains power (electric meter box) to continue the installation

Shock hazard! Do not contact any exposed wiring. Only touch the plastic housing of this product.

7 - 8. Control 1 or multiple Trust SmartHome receivers

If you want to simultaneously control one or more receivers, assign a preferred button on your wall switch to the memory of the receiver(s). Instructions for the code learning process can be found in the receiver manual.

9. Manual operation of a Trust SmartHome on/off receiver

1. Press ON once to switch the receiver on.
2. Press OFF to switch the receiver off.

10. Manual operation of a Trust SmartHome dimmer receiver

1. Press ON once to switch the receiver on.
2. Press OFF-ON quickly to activate the dim-mode. The light will slowly dim up and down.
3. Press OFF-ON again to select the desired light intensity.
4. Press OFF to switch the receiver off.

11. Manual operation of a Trust SmartHome electric screens receiver

1. Send an ON-signal to raise the screen.
2. Send an ON-signal again to stop.
3. Send an OFF-signal to lower the screen.
4. Send an OFF-signal again to stop.

Read the receiver's manual to reverse the direction of the screen, if needed.

IMPORTANT INFORMATION
MULTI LANGUAGE



Item 71079 Version 1.0
Visit www.trust.com
for the latest instructions

MINI BUILD-IN TRANSMITTER

Read these simple guidelines. Not following them may be dangerous and faulty installation invalidate any warranty that may apply to this product.

COMPATIBILITY

This transmitter works with all Trust SmartHome receivers.

FUNCTIONALITY

Transforms your design wall switch into a Trust SmartHome transmitter. To install in an empty installation box without mains power connection

TECHNICAL SPECIFICATIONS

- Battery 1x 3 V CR2032 lithium
- RF frequency 433.92 MHz
- RF range Up to 30 m indoor/70 m outdoor (optimal conditions)

WIRELESS RADIO SIGNAL

- The 433.92 MHz radio signal passes through walls, windows and doors.
- Indoor range: up to 30 m. Outdoor range: up to 70 m. (optimal conditions)
- The range is strongly dependent on local conditions, such as the presence of metals. For example, the thin metal coating in Low-emissivity (Low-E) glass has a negative impact on the range of radio signals.
- There may be restrictions on the use of this device outside the EU. If applicable, check whether this device complies with local directives.

INSTALLATION

Wire colors may vary per country. Contact an electrician when in doubt about wiring. This product is not suitable if the existing light switch is interconnected to other light switches for multiway switching.

BATTERY

Remove the battery if the product will not be used for an extended period. Extreme temperatures reduce the capacity and lifetime of the battery. Replace the battery when the reach of the transmitter starts to decrease.

Do not crush, burn or shred batteries. Dispose of batteries according to local regulations. Please recycle when possible. Do not dispose as household waste.

LIFE-SUPPORT

Never use Trust SmartHome products for life-support systems or other applications in which equipment malfunctions can have life-threatening consequences.

INTERFERENCE

All wireless devices may be subject to interference, which could affect performance. The minimum distance between 2 receivers should be at least 50 cm.

LEGAL INFORMATION

CE: Trust declares this device complies with the Directives as listed in Section 2 of this document.

WEEE: Dispose of the device at a recycling centre. More information: www.trust.com

Warranty information: www.trust.com/warranty

REPAIRING

Do not attempt to repair this product. There are no user-serviceable parts inside.

WATER-RESISTANCE

This product is not water-resistant. Keep it dry. Moisture will corrode the inner electronics.

CLEANING

Use a dry cloth to clean this product. Do not use harsh chemicals, cleaning solvents, or strong detergents.

HANDLING

Do not drop, knock, or shake the device. Rough handling can break internal circuit boards and fine mechanics.

ENVIRONMENT

Do not expose the product to excessive heat or cold, as it can damage or shorten the life of electronic circuit boards and batteries.

CE Declaration of Conformity

Trust International B.V. declares that this TRUST SMART Home-product:

Model:	AWMT-003 MINI BUILD-IN TRANSMITTER
Item number:	71079
Intended use:	Indoor

is in compliance with the essential requirements and other relevant provisions of the following directives: EMC Directive (108/2004/EC), Low Voltage Directive (95/2006/EC), ROHS Directive (65/2011/EC), R&TTE Directive (5/1999/EC).

The product is compatible with the following norms/standards:

EN 301 489-1 V1.9.2 (2011-09)
EN 301 489-3 V1.6.1 (2013-08)
EN 55022: 2010 +AC: 2011 Class B
EN 61000-4-2: 2009
EN 61000-4-3: 2006 +A1: 2008 +A2: 2010
EN 300 220-1 V2.4.1 (2012-05)
EN 300 220-2 V2.4.1 (2012-05)
EN 62479: 2010
EN 60950-1:2006+A11:2009+A1:2010+A12:2011+A2:2013
EN 50581:2012

Authorized representative



H. Donker, Procurement Director
Dordrecht, 9-11-2015

EUROTEC People • Technology • Solutions
HVAC • Refrigeration • Electrical • Measurement

TRUST SMART Home
LAAN VAN BARCELONA 600
3317DD DORDRECHT
NEDERLAND
www.trust.com