

**Trust** | SMART Home

START-LINE  
RECEIVER ASUN-650

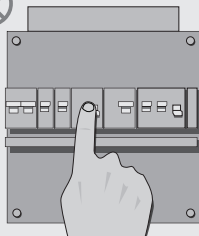
USER MANUAL  
MULTI LANGUAGE



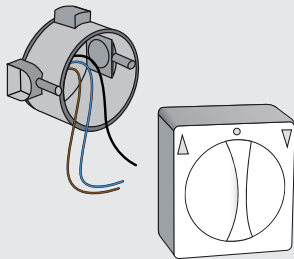
Item 71017 Version 1.0  
Visit [www.trust.com](http://www.trust.com)  
for the latest instructions

SUN BLINDS SWITCH

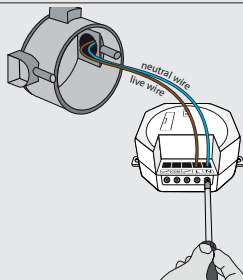
1



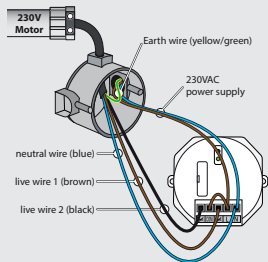
2

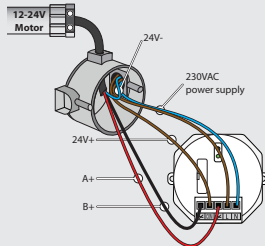
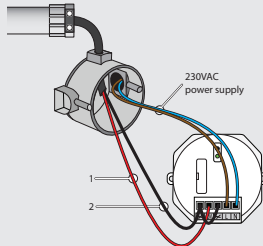
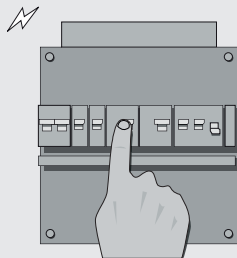
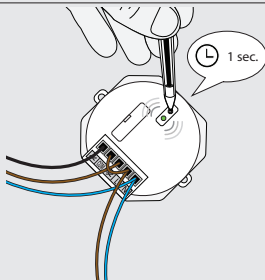


3-4

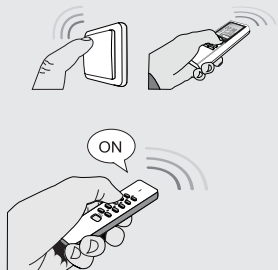


5

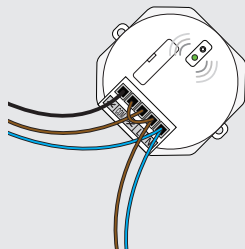


**6****7****8****9**

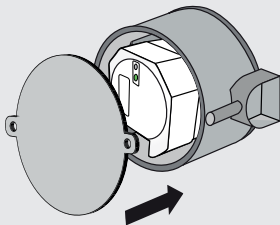
10



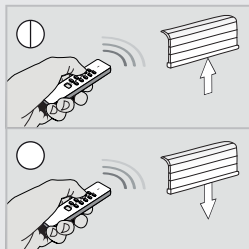
11



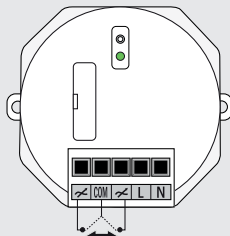
12



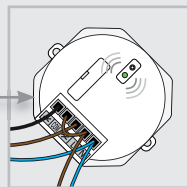
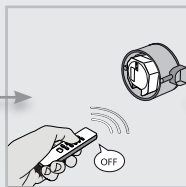
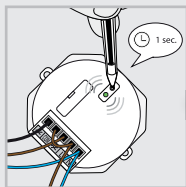
13



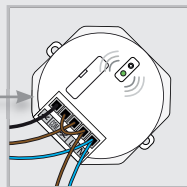
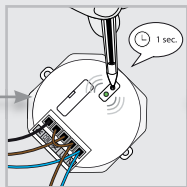
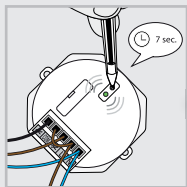
14



15



16



## 1. Switch off the mains power (electric meter box) before installing this product

## 2. Remove the existing switch

Detach the existing switch and disconnect the wires. The existing wall switch is replaced by this product and can no longer be used. Consult the supplier of your sun blind system when in doubt about motor type and wire colors.

## 3. Connect 230V power supply

Connect the (brown) live wire to the [L] contact. Connect the (blue) neutral wire to the [N] contact. Contact an electrician when in doubt about wire colors. Tighten the clamping screws.



## 4. Connect motor wiring

How to connect the motor wiring depends on the type of motor:

- Read step 5 for a 230V motor.
- Read step 6 for a 12-24V motor.
- Read step 7 for a motor with a momentary switch.

## 5. Connect 230V motor

1. Connect the (blue) neutral wire from the motor to the [N] contact.
2. Use a separate piece of wire to connect [L] with [COM].
3. Connect the live wires from the motor (brown and black) to the left and right [↗] contact. These positions can be interchanged to reverse the up and down motion of the motor.

## 6. Connect 12-24V motor

1. Connect the 24V+ wire to [COM].
2. Connect switch wires A+ and B+ to the left and right [↗] contact. These positions can be interchanged to reverse the up and down motion of the motor. Never connect 230VAC wires to low-voltage wires.

## 7. Motor with momentary switch

The motor only has 2 wires.

1. Connect one wire to [↗] and the other wire to [COM]. These positions can be interchanged to reverse the up and down motion of the motor.
2. Use a separate piece of wire to connect both [↗] contacts. Never connect 230VAC wires to low-voltage wires.

## 8. Switch on the mains power (electric meter box) to continue the installation


Shock hazard! Do not contact any exposed wiring. Only touch the plastic housing of this product.

## 9. Activate learn-mode

Press the learn-button on the receiver for 1 second. The learn-mode will be active for 15 seconds and the LED-indicator will blink slowly.

## 10. Assign Trust SmartHome transmitter code

While the learn-mode is active, send an ON-signal with any Trust SmartHome transmitter to assign the code to the receiver's memory.



### 11. Code confirmation

The LED indicator of the receiver will blink fast to confirm the code has been received. The receiver can store up to 6 different transmission codes in its memory. The memory will be preserved when the receiver is moved to another location or in case of power failure.

### 12. Install the receiver

Install the receiver in a standard junction box or other type of housing (break off the mounting tabs if necessary). Close the housing with a blind cover.

### 13. Manual operation with a Trust SmartHome transmitter

1. Send an ON-signal to raise the screen.
2. Send an ON-signal again to stop.
3. Send an OFF-signal to lower the screen.
4. Send an OFF-signal again to stop.

Momentary switch only: every command (up/down/stop) needs to be given twice.

### 14. Explanation COM-contact

The module contains 2 voltage-free contacts: [↔].  
In the neutral position, the contact [COM] is not switched.  
After an on/off signal from a Trust SmartHome transmitter, [COM] switches either to the left or the right [↔] contact.  
After 2 minutes, the COM contact switches back to its neutral position.

### 15. Single code delete

1. Press the learn-button for 1 second. The learn-mode will be active for 15 seconds and the LED-indicator will blink slowly.
2. While the learn-mode is active, send an OFF-signal to delete the code of a specific Trust SmartHome transmitter.
3. The LED indicator will blink fast shortly to confirm transmitter code deletion.

### 16. Full memory delete

1. Press and hold the learn-button on the receiver (aprox. 7 sec.) until the LED-indicator starts blinking fast. The delete mode will be active for 15 seconds.
2. While the delete mode is active, press the learn button on the receiver again for 1 second.
3. The LED indicator will blink fast shortly to confirm memory deletion.



IMPORTANT INFORMATION  
MULTI LANGUAGE



Item 71017 Version 1.0  
Visit [www.trust.com](http://www.trust.com)  
for the latest instructions

SUN BLINDS SWITCH



## **EN** ASUN-650 SUN BLINDS SWITCH

Read these simple guidelines. Not following them may be dangerous and faulty installation will invalidate any warranty that may apply to this product.

### **COMPATIBILITY**

This receiver works with all Trust SmartHome transmitters.

### **FUNCTIONALITY**

Build-in receiver for controlling (up/down/stop) 230 V, 12 V and 24 V electric motors (sunblinds, screens, etc.)

### **TECHNICAL SPECIFICATIONS**

- |                             |   |
|-----------------------------|---|
| • Power supply input        | 220-240 VAC 50 Hz   |
| • Maximum load              | 500 Watt  |
| • Replaceable fuse          | 20 mm 5A (T5A, H250V)                                     |
| • RF frequency              | 433.92 MHz  |
| • RF range                  | Up to 30 m indoor/up to 70 m outdoor (optimal conditions) |
| • Standby power consumption | 0.5 Watt  |
| • Memory addresses          | 6   |

### **WIRELESS RADIO SIGNAL**

- The 433.92 MHz radio signal passes through walls, windows and doors.
- Indoor range: up to 30 m. Outdoor range: up to 70 m. (optimal conditions)
- The range is strongly dependent on local conditions, such as the presence of metals. For example, the thin metal coating in Low-emissivity (Low-E) glass has a negative impact on the range of radio signals.
- There may be restrictions on the use of this device outside the EU. If applicable, check whether this device complies with local directives.



**INSTALLATION**

Wire colors may vary per country.  
Contact an electrician when in doubt about wiring.  
The module contains 2 voltage-free switches.  
This makes it possible to switch low-voltage motors.  
Never connect 230 VAC wires to low-voltage wires,  
as it can result in defects, a short circuit or fire.

**MAXIMUM LOAD**

Never connect lights or equipment that exceed the maximum load of the receiver, as it can result in defects, a short circuit or fire.

**SHOCK HAZARD**

Exercise caution when installing a receiver.  
Voltage may be present, even when a receiver is switched off.

**LIFE-SUPPORT**

Never use Trust SmartHome products for life-support systems or other applications in which equipment malfunctions can have life-threatening consequences.

**INTERFERENCE**

All wireless devices may be subject to interference, which could affect performance.  
The minimum distance between 2 receivers should be at least 50 cm.

**LEGAL INFORMATION**

CE: Trust declares this device complies with the Directives as listed in Section 2 of this document.  
WEEE: Dispose of the device at a recycling centre. More information: [www.trust.com](http://www.trust.com)  
Warranty information: [www.trust.com/warranty](http://www.trust.com/warranty)

**REPAIRING**

Do not attempt to repair this product.  
There are no user-serviceable parts inside.

**WATER-RESISTANCE**

This product is not water-resistant. Keep it dry.  
Moisture will corrode the inner electronics and can result in a short circuit, defects and shock hazard.

**CLEANING**

Use a dry cloth to clean this product. Do not use harsh chemicals, cleaning solvents, or strong detergents.

**HANDLING**

Do not drop, knock, or shake the device.  
Rough handling can break internal circuit boards and fine mechanics.

**ENVIRONMENT**

Do not expose the product to excessive heat or cold, as it can damage or shorten the life of electronic circuit boards.

**CE Declaration of Conformity**

Trust International B.V. declares that this TRUST SMART Home-product:

Model: ASUN-650 SUN BLINDS SWITCH  
Item number: 71017  
Intended use: Indoor

is in compliance with the essential requirements and other relevant provisions of the following directives: EMC Directive, Low Voltage Directive and R&TTE Directive.

The product is compatible with the following norms/standards:

EN 55015:2013  
EN 61058-2-4:2005  
EN 61058-1:2002 + A2:2008  
EN 300 220-1 V2.4.1 (2012-05)  
EN 300 220-2 V2.4.1 (2012-05)  
EN 301 489-1 V1.9.2 (2011-09)  
EN 301 489-3 V1.6.1 (2013-08)  
EN 55022:2010 +AC:2011, Class B  
EN 61000-3-2:2006 +A1:2009 +A2:2009, Class A  
EN 61000-3-3:2013  
EN 61000-4-2:2009

EN 61000-4-3:2006 +A1:2008 +A2:2010  
EN 61000-4-4:2012  
EN 61000-4-5:2006  
EN 61000-4-6:2014  
EN 61000-4-11:2004 EN 301 489-1 V1.9.2 (2011-09)  
EN 61000-4-11:2004

Authorized representative



H. Donker, Procurement Director  
Dordrecht, 1-1-2015

**TRUST SMART Home**  
LAAN VAN BARCELONA 600  
3317DD DORDRECHT  
NEDERLAND  
[www.trust.com](http://www.trust.com)

**EUROTEC** People • Technology • Solutions  
HVAC • Refrigeration • Electrical • Measurement