

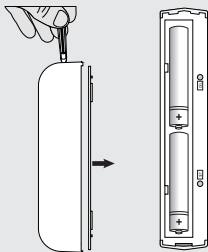
USER MANUAL  
MULTI LANGUAGE



Item 71113 Version 1.0  
Visit [www.trust.com](http://www.trust.com)  
for the latest instructions

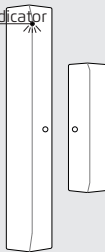
ALMST-2000 WIRELESS MAGNETIC SENSOR

1

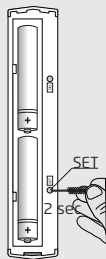


2

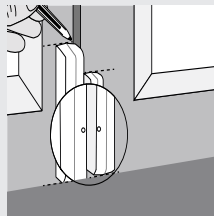
Red LED indicator



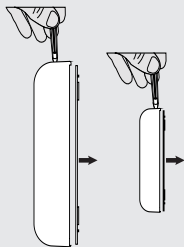
3



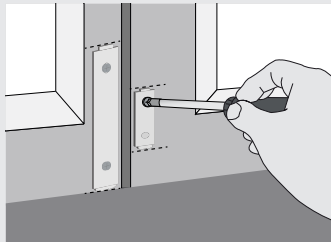
4



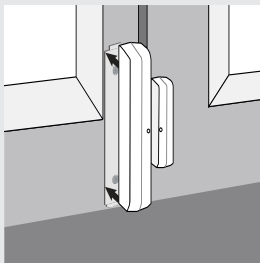
5



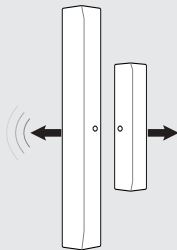
6



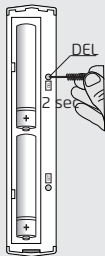
7



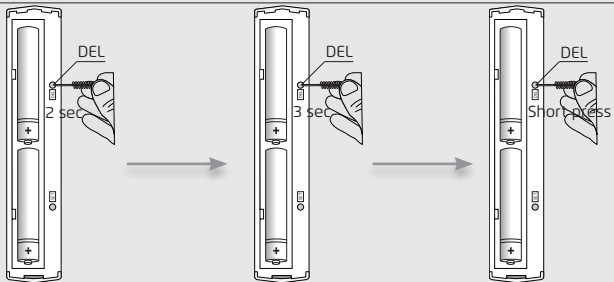
8



9



10



### 1. Place batteries

Push with a sharp object on top of the magnetic sensor and pull off the backside. Insert two 1,5V AAA Alkaline batteries in the slot. Observe the correct polarity of the batteries (place plus and minus on the correct side).

### 2. LED indicator

The magnetic sensor has a LED indicator in the housing. The LED behaviour is as followed.

Low battery: LED will blink 3x every 6 sec

Confirm pair: LED will blink 5x

Confirm unpair: LED will blink 5x

### 3. Pair the ALMST

Consult the manual of the Siren to activate the learn mode. Send (while the learn mode of the Siren is active) a pair-signal by pressing the SET button for 2 seconds with a sharp object next to the battery slot of the magnetic sensor. The LED indicator will flash 5x to confirm that the pairing has been done successfully.

### 4. Mount the ALMST

Place the magnetic sensor on the window or door and make sure that both points on the two parts are in line with each other. Mark the top and bottom of both parts. After marking the positions remove the sensor.

### 5. Remove backplate from the ALMST

Open the magnetic sensor by pushing with a sharp object on top of both parts and pull off the backplate.

### 6. Fasten the ALMST

Screw or tape both backplates of the magnetic sensor on the window or door according to the made markings. When securing the backplates make sure both parts are mounted with as little space between as possible (max. 5mm).

## 7. Close the ALMST

Place both parts of the magnetic sensor back on the mounted backplates. Again make sure both points on the two parts are in line with each other.

## 8. Operation of the ALMST

ON-signal: Once the two parts are separated more than 5mm from each other, the sensor sends an ON-signal to the Siren.

**Note:** After arming the ALSIR-2000 there is a 85 sec walk-out time. 4 sec after arming the alarm windows and doors can be opened for max 1 min. After 85 sec the sensor is active. **Tip:** Arm the Siren from the outside.

## 9. Unpair the ALMST

Consult the manual of the Siren to activate the learn mode. Send (while the learn mode of the Siren is active) a disconnect-signal by pressing the DEL button with a sharp object next to the battery slot of the magnetic sensor. The LED indicator will flash 5x to confirm that the unpairing has been done successfully.

**Note:** When the sensor is not used unpair it from the Siren first before removing it.

## 10. Delete ALMST memory

To delete the memory of the ALMST press the DEL button for 2 seconds with a sharp object (until the LED starts to blink). Release the button and press the DEL button again for 3 seconds. (until the LED starts to blink fast). Press the DEL button shortly to delete the memory of the ALMDT. The LED will blink 5x to confirm the memory has been deleted.

IMPORTANT INFORMATION  
MULTI LANGUAGE



Item 71113 Version 1.0  
Visit [www.trust.com](http://www.trust.com)  
for the latest instructions

ALMST-2000 WIRELESS MAGNETIC SENSOR

## **EN** ALMST-2000 WIRELESS MAGNETIC SENSOR

---

Read the manual carefully. Failure to follow these instructions can be dangerous.  
Incorrect installation will void any warranty on this product.

### **COMPATIBILITY**

The magnetic sensor works with the ALSIR-2000.

### **FUNCTIONALITY**

Wireless magnetic sensor for activating the ALSIR-2000 when a door or window is opened/closed.

### **SMARTPHONE/TABLET FUNCTIONS**

By combining this product with the OCTOPUS Control station, you can also set your alarm on / off via your tablet and / or smartphone and receive push notifications when you are not at home.

For more information visit [trust.com/71110](http://trust.com/71110)

### **TECHNICAL SPECIFICATIONS**

- Battery 2x 1,5 Volt AAA alkaline battery (not included)
- Battery life 18 months stand-by
- Frequency 868 MHz 2-way communication
- RF range Up to 120 m (under optimal conditions)
- Battery low indication LED will blink 3 times every 6 sec.

### **WIRELESS RADIO SIGNAL**

- The 868 MHz signal passes through walls, windows and doors.
- Range up to 120 m (under optimal conditions).
- The strength depends on local conditions, such as the presence of metals. The metal particles in for example, double glazing (HR glass), can provide a reduction in the range of wireless signals.
- There may be restrictions on the use of this device outside the EU. Check, if applicable, whether this device meets local regulations.

### **Legal information**

CE: Trust declares this device complies with the Directives as listed in Section 2 of this document.

WEEE: Dispose of the device at a recycling centre. More information: [www.trust.com](http://www.trust.com)

Warranty information: [www.trust.com/warranty](http://www.trust.com/warranty)



**BATTERY**

Remove the battery from the device if it is not used for a long time. Extreme temperatures reduce the capacity and lifetime of the battery.

Replace the batteries when the LED in the magnetic sensor starts to blink 3 times every 6 seconds.

Batteries should not be chopped into pieces or burned. Dispose of batteries according to local regulations. Deliver them for the possibility to reuse. Do not throw batteries away with the normal household waste.

**LIFE SUPPORT**

Never use Trust SmartHome products for life support systems or other applications where failures can have life-threatening consequences.

**INTERFERENCE**

Interference can affect the operation of all broadcast transmitter and receivers negatively. The distance between 2 receivers or transmitters should be at least 50 cm.

**REPAIRS**

Do not try to repair this product yourself.  
The device contains no serviceable parts for the user.

**WATER-RESISTANT**

This product is not water-resistant.

**CLEANING**

Clean this product with a dry cloth.  
Do not use harsh chemicals, cleaning solvents or strong detergents.

**MEMORY**

The sensor can save up to 8 devices in its memory.

**HANDLING**

Do not drop the device, bump the device against something or shake it. Rough handling can damage internal circuit boards and fine mechanics.

**ENVIRONMENT**

The product should not be exposed to extreme heat or cold. This can damage the circuit boards and batteries or shorten its life.

**DISCLAIMER**

This product is a basic deterrent against intruders. However, it remains the responsibility of the end-user to adequately protect their home against break-ins. Therefore Trust cannot be held responsible or liable for any damages resulting from break-ins, trespassing, unauthorized access or vandalism.

**CE Declaration of conformity**

Trust International B.V. declares that the TRUST SMARTHOME-product:

model: ALMST-2000 Wireless magnetic sensor  
item number: 71113  
intended use: Indoor

is in compliance with the essential requirements and other relevant provisions of the following directives: EMC Directive (2014/30/EU), Low Voltage Directive (2014/35/EU), ROHS Directive (2011/65/EC), R&TTE Directive (1999/5/EC). The product is compatible with the following norms/standards:

EN 300-220-1 V2.4.1 (2012)

EN 300-220-2 V2.4.2 (2012)

EN 301489-1 V1.9.2 (2011)

EN 301489-3 V1.6.1 (2013)

EN 60950-1: 2006+A11: 2009+A1 2010+A12:

2011+A2 2013

EN 55014-1 : 2006+A1 : 2009+A2: 2011

EN 55014-2: 1997+A1: 2001 +A2: 2008

EN 50581: 2012

Manufacturer/Authorised representative,



H. Donker, Procurement Director

Dordrecht, April 28 2016

**EUROTEC** People • Technology • Solutions  
HVAC • Refrigeration • Electrical • Measurement

**Trust International B.V.**  
LAAN VAN BARCELONA 600  
3317DD DORDRECHT  
NETHERLANDS  
www.trust.com