

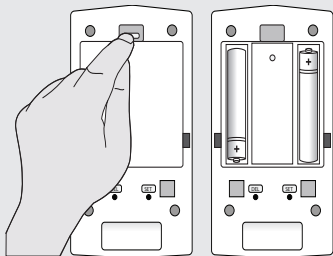
USER MANUAL
MULTI LANGUAGE



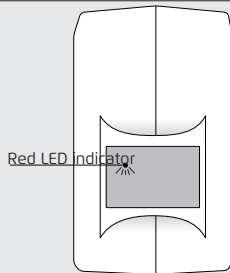
Item 71114 Version 1.0
Visit www.trust.com
for the latest instructions

ALMDT-2000 INFRARED MOTION SENSOR

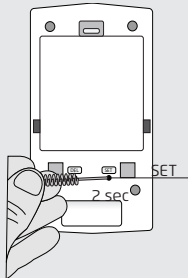
1



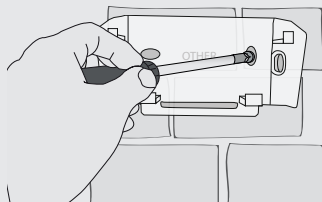
2



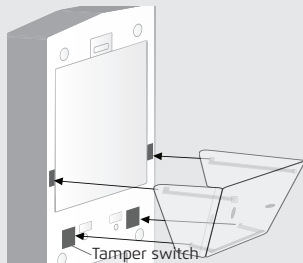
3



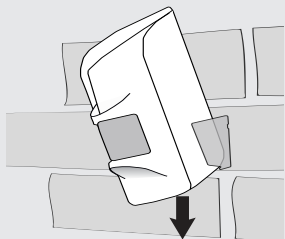
4



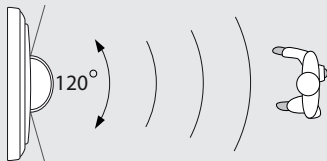
5



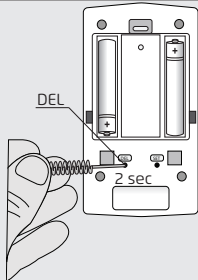
6



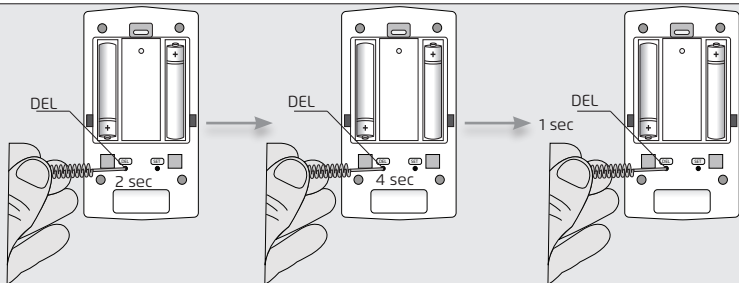
7



8



9



1. Place batteries

Open the battery slot on the back side of the motion sensor by pushing the pull-tab down and removing the battery cover. Insert two AA 1,5V Alkaline batteries as shown above. Observe the correct polarity of the batteries (place plus and minus on the correct side). Close the battery slot.

2. LED indicator

The sensor has a LED indicator in the detection window. The LED behaviour is as followed:

Confirm pair: LED will blink 5 times

Confirm unpair: LED will blink 5 times

Low battery: LED will blink 3x every 6 sec

3. Pairing the ALMDT to Siren

Consult the manual of the Siren to activate the learn mode. Send (while the learn mode of the Siren is active) a connect-signal by pressing the SET button for 2 seconds with a sharp object on the back of the sensor. The LED indicator will flash 5x to confirm that the pairing has been done successfully.

4. Mounting the ALMDT

Because the motion sensor is wireless, it can be easily placed in your house. Mount the backplate of the motion sensor on a flat surface and secure it with screws. (Screws are included).

5. Place ALMDT on the backplate

Place the ALMDT on the backplate. Make sure that the backplate is fitted in the location of the tamper switch. This is a switch that prevents the sensor from being removed when it is mounted. When the sensor is removed from the backplate and the Siren is armed the tamper switch will activate the alarm immediately.

6. Secure the ALMDT

When the ALMDT is placed on the backplate pull it down until you hear a click to secure it and lock the tamper switch.

Note: After arming the Siren it is possible to move in front of the sensor for 1 min. It takes ~1.5 minute before the sensor will be completely active.

7. Detection angle

The horizontal detection angle of the sensor is max. $\sim 120^\circ$ and the vertical detection angle is max $\sim 62^\circ$. Within these angles movements will be detected by the sensor.

Note: After a motion has been detected by the sensor it needs about 6-8 sec to initialize before a new motion can be detected.

8. Unpairing ALMDT

Consult the manual of the Siren to activate the learn mode. Send (while the learn mode of the Siren is active) a disconnect-signal by pressing the DEL button with a sharp object on the back of the ALMDT. The LED indicator will flash 5x to confirm that the unpairing has been done successfully.

Note: When the sensor is not used unpair it from the Siren first before removing it.

9. Delete ALMDT memory

To delete the memory of the ALMDT press the DEL button for 2 seconds with a sharp object (until the LED starts to blink). Release the button and press the DEL button again for 4 seconds. (until the LED starts to blink fast). Press the DEL button shortly to delete the memory of the ALMDT. The LED will blink 5x to confirm the memory has been deleted.

IMPORTANT INFORMATION
MULTI LANGUAGE



Item 71114 Version 1.0
Visit www.trust.com
for the latest instructions

ALMDT-2000 INFRARED MOTION SENSOR

EN ALMDT-2000 INFRARED MOTION SENSOR

Read these simple instructions. Failure to follow these instructions can be dangerous. Incorrect installation will void any warranty on this product.

COMPATIBILITY

The sensor works with the ALSIR-2000.

FUNCTIONALITY

Infrared motion sensor for triggering the ALSIR-2000.

SMARTPHONE/TABLET FUNCTIONS

By combining this product with the OCTOPUS Control station, you can also set your alarm on / off via your tablet and / or smartphone and receive push notifications when you are not at home.

For more information visit trust.com/71110

TECHNICAL SPECIFICATIONS

- | | |
|--------------------------|--|
| • Battery | 2x 1,5V AA alkaline battery (not included) |
| • Battery life | 18 months stand-by |
| • Battery low indication | LED will blink 3 times every 6 sec |
| • Frequency | 868 MHz 2-way communication |
| • RF Range | Up to 120 m (under optimal conditions) |
| • Detection range | ± 15 m |
| • Detection angle | Max. 120° horizontal and Max. 62° vertical |

WIRELESS SIGNAL

- The 868 MHz signal passes through walls, windows and doors.
- Range up to 120 m (under optimal conditions).
- The range depends on local conditions, such as the presence of metals. The metal particles in for example, double glazing (HR glass), can provide a reduction in the range of wireless signals.
- There may be restrictions on the use of this device outside the EU. Check, if applicable, whether this device meets local regulations.

Legal information

CE: Trust declares this device complies with the Directives as listed in Section 2 of this document.

WEEE: Dispose of the device at a recycling centre. More information: www.trust.com

Warranty information: www.trust.com/warranty

BATTERY

Remove the battery from the device if it is not used for a long time. Extreme temperatures reduce the capacity and lifetime of the battery.

Replace the battery when the LED will blink 3 times every 6 sec. Batteries should not be chopped into pieces or burned. Dispose of batteries according to local regulations. Deliver them for the possibility to reuse. Do not throw batteries away with the normal household waste.

LIFE SUPPORT

Never use Trust SmartHome products for life support systems or other applications where failures can have life-threatening consequences.

INTERFERENCE

Interference can affect the operation of all broadcast transmitters and receivers negatively. The distance between 2 receivers or transmitters should be at least 50 cm.

REPAIRS

Do not try to repair this product yourself. The device contains no serviceable parts for the user.

WATER-RESISTANT

This product is not water-resistant.

CLEANING

Clean this product with a dry cloth. Do not use harsh chemicals, cleaning solvents or strong detergents.

HANDLING

Do not drop the device, bump the device against something or shake it. Rough handling can damage internal circuit boards and fine mechanics.

MEMORY

The sensor can save up to 8 devices in its memory.

PETS

The infrared motion sensor can be triggered by pets.

ENVIRONMENT

The product should not be exposed to extreme heat or cold. This can damage the circuit boards and batteries or shorten its life.

DISCLAIMER

This product is a basic deterrent against intruders. However, it remains the responsibility of the end-user to adequately protect their home against break-ins. Therefore Trust cannot be held responsible or liable for any damages resulting from break-ins, trespassing, unauthorized access or vandalism.

CE Declaration of conformity

Trust International B.V. declares that the TRUST SMARTHOMÉ-product:

model:	ALMDT-2000 Infrared motion sensor
item number:	71114
intended use:	Indoor

is in compliance with the essential requirements and other relevant provisions of the following directives: EMC Directive (2014/30/EU), Low Voltage Directive (2014/35/EU), ROHS Directive (2011/65/EC), R&TTE Directive (1999/5/EC). The product is compatible with the following norms/standards:

EN 300-220-1 V2.4.1 (2012)	EN 55014-1 : 2006+A1 : 2009+A2: 2011
EN 300-220-2 V2.4.2 (2012)	EN 55014-2: 1997+A1: 2001 +A2: 2008
EN 301489-1 V1.9.2 (2011)	EN 50581: 2012
EN 301489-3 V1.6.1 (2013)	
EN 60950-1: 2006+A11: 2009+A1 2010+A12: 2011+A2 2013	

Manufacturer/Authorised representative,



H. Donker, Procurement Director

Dordrecht, April 28 2016

EUROTEC People • Technology • Solutions
HVAC • Refrigeration • Electrical • Measurement

Trust International B.V.
LAAN VAN BARCELONA 600
3317DD DORDRECHT
NETHERLANDS
www.trust.com