



SECURITY PLUS-LINE  
ALKCT-2000

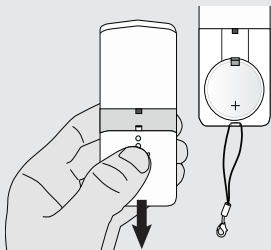
USER MANUAL  
MULTI LANGUAGE



Item 71115 Version 1.0  
Visit [www.trust.com](http://www.trust.com)  
for the latest instructions

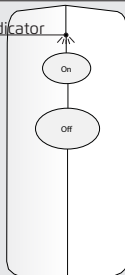
ALKCT-2000 ARM/DISARM REMOTE CONTROL

1

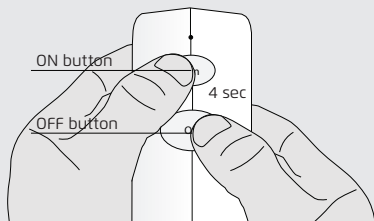


2

Red LED indicator

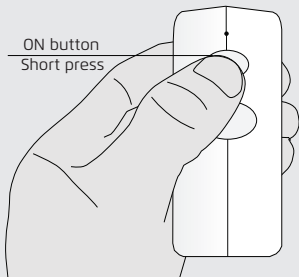


3



4

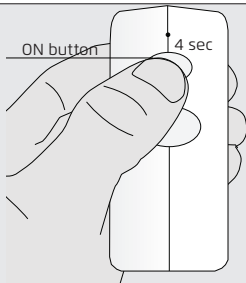
ON button  
Short press



5

ON button

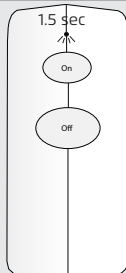
4 sec



1.5 sec

On

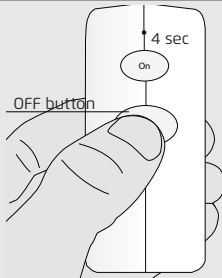
Off



6

OFF button

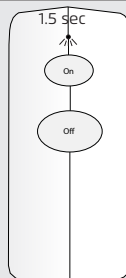
4 sec



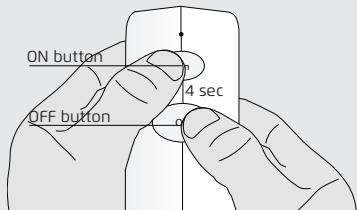
1.5 sec

On

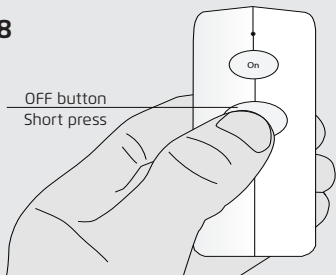
Off



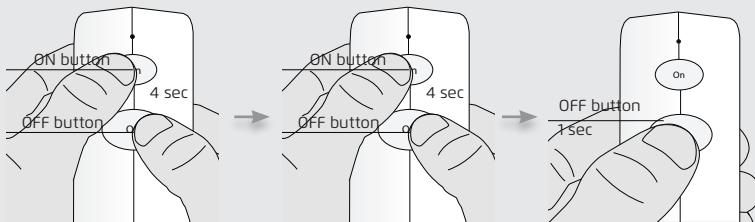
7



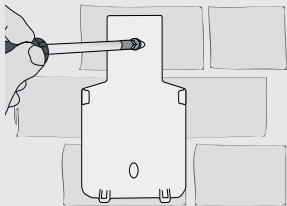
8



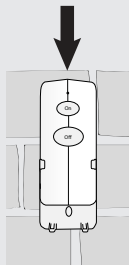
9



10



11



### 1. Place battery

Open the battery slot at the back of the ALKCT by sliding it down. Place the included 3V CR2477 battery and potentially the keychain cord. Close the battery slot. For more information on replacing and purchasing new batteries visit [trust.com/71115](http://trust.com/71115)

### 2. LED indicator

Low battery: LED will blink 2x when a button is pushed

Confirm pair/unpair: LED will blink 5x

Successful arm/disarm: LED will light for 1.5 sec

Unsuccessful arm/disarm: LED will blink shortly 3x

### 3. Activate the pairing mode

Consult the manual of the Siren to activate the pairing mode. Put the ALKCT in pairing mode by first pressing the ON and OFF button simultaneously for 4 sec (until the LED of the ALKCT starts blinking).

### 4. Confirm pairing

After entering pairing mode press the ON button shortly to pair with the Siren. The LED indicator of the Siren and ALKCT will be flashing 5 times to confirm that the pairing has been done successfully.

### 5. Arm/Turn on the siren

To arm the siren press the ON button for 4 seconds on the ALKCT.

If the siren is armed successfully the LED of the ALKCT will light up for 1.5 sec.

### 6. Disarm/Turn off the siren

To disarm the siren press the OFF button for 4 seconds on the ALKCT.

If the siren is disarmed successfully the LED of the ALKCT will light up for 1.5 sec.

### 7. Activating the unpairing mode

Consult the manual of the Siren to activate the pairing mode. Put the ALKCT in pairing mode by first pressing the ON and OFF button simultaneously for 4 sec (until the LED of the ALKCT starts blinking).

### **8. Confirm unpairing**

After entering pairing mode press the OFF button shortly to unpair with the Siren. The LED indicator of the Siren and ALKCT will be flashing 5 times to confirm that the unpairing has been done successfully.

### **9. Delete ALKCT memory**

To delete the memory of the ALKCT press the ON and OFF button simultaneously for 4 seconds (until the LED starts to blink) Release the buttons and press the ON and OFF buttons simultaneously again for 4 seconds. (until the LED starts to blink fast). Press the OFF button shortly to delete the memory of the ALKCT. The LED will blink 5x to confirm the memory has been deleted.

### **10. Mounting the holder**

Mount the holder of the ALKCT on a flat surface and secure it with screws. (Mounting screws not included)

### **11. Place ALKCT in holder**

When the holder has been mounted and secured with screws place the ALKCT in the holder. To place the ALKCT slide it in from top to bottom.



SECURITY PLUS-LINE  
ALKCT-2000

IMPORTANT INFORMATION  
MULTI LANGUAGE



Item 71115 Version 1.0  
Visit [www.trust.com](http://www.trust.com)  
for the latest instructions

ALKCT-2000 ARM/DISARM REMOTE CONTROL



Read the manual carefully. Faulty installation and usage will invalidate any warranty that may apply to this product.

#### **COMPATIBILITY**

The remote control works with the ALSIR-2000.

#### **FUNCTIONALITY**

Arm/disarm remote control for enabling/disabling ALSIR-2000.

#### **SMARTPHONE/TABLET FUNCTIONS**

By combining this product with a sensor and the OCTOPUS Control station, you can also set your alarm on / off via your tablet and / or smartphone and receive push notifications when you are not at home. for more information visit [trust.com/71110](http://trust.com/71110)

#### **TECHNICAL SPECIFICATIONS**

- Battery 1x 3V lithium batterij type CR2477 (included)
- Battery life 18 months stand-by
- Frequency 868 MHz 2-way communication
- RF range Up to 120 m (under optimal conditions)
- Battery low indication LED will blink 2 times every time a button is pushed.

#### **WIRELESS RADIO SIGNAL**

- The 868 MHz signal passes through walls, windows and doors.
- Range up to 120 m (under optimal conditions).
- The strength depends on local conditions, such as the presence of metals. The metal particles in for example, double glazing (HR glass), can provide a reduction in the range of wireless signals.
- There may be restrictions on the use of this device outside the EU. Check, if applicable, whether this device meets local regulations.

#### **Legal information**

CE: Trust declares this device complies with the Directives as listed in Section 2 of this document.

WEEE: Dispose of the device at a recycling centre. More information: [www.trust.com](http://www.trust.com)

Warranty information: [www.trust.com/warranty](http://www.trust.com/warranty)

**BATTERY**

Remove the battery from the device if it is not used for a long time. Extreme temperatures reduce the capacity and lifetime of the battery.

Replace the battery when the LED in the remote control starts to blink 2 times every time a button is pushed.

Batteries should not be chopped into pieces or burned. Dispose of batteries according to local regulations. Deliver them for the possibility to reuse. Do not throw batteries away with the normal household waste.

**LIFE SUPPORT**

Never use Trust SmartHome products for life support systems or other applications where failures can have life-threatening consequences.

**INTERFERENCE**

Interference can affect the operation of all broadcast transmitters and receivers negatively. The distance between 2 receivers or transmitters should be at least 50 cm.

**REPAIRS**

Do not try to repair this product yourself. The device contains no serviceable parts for the user.

**WATER-RESISTANT**

This product is not water-resistant.

**CLEANING**

Clean this product with a dry cloth. Do not use harsh chemicals, cleaning solvents or strong detergents.

**MEMORY**

The remote control can save up to 8 devices in its memory.

**HANDLING**

Do not drop the device, bump the device against something or shake it. Rough handling can damage internal circuit boards and fine mechanics.

**ENVIRONMENT**

The product should not be exposed to extreme heat or cold. This can damage the circuit boards and batteries or shorten its life.

**DISCLAIMER**

This product is a basic deterrent against intruders. However, it remains the responsibility of the end-user to adequately protect their home against break-ins. Therefore Trust cannot be held responsible or liable for any damages resulting from break-ins, trespassing, unauthorized access or vandalism.

**CE** Declaration of conformity

Trust International B.V. declares that the TRUST SMARTHOMÉ-product:

model: ALKCT-2000 Arm/Disarm remote control  
item number: 71115  
intended use: Indoor/Outdoor

is in compliance with the essential requirements and other relevant provisions of the following directives: EMC Directive (2014/30/EU), Low Voltage Directive (2014/35/EU), ROHS Directive (2011/65/EC), R&TE Directive (1999/5/EC). The product is compatible with the following norms/standards:

EN 300-220-1 V2.4.1 (2012)  
EN 300-220-2 V2.4.2 (2012)  
EN 301489-1 V1.9.2 (2011)  
EN 301489-3 V1.6.1 (2013)  
EN 60950-1: 2006+A11: 2009+A1 2010+A12:  
2011+A2 2013

EN 55014-1 : 2006+A1 : 2009+A2: 2011  
EN 55014-2: 1997+A1: 2001 +A2: 2008  
EN 50581: 2012

Manufacturer/Authorised representative,



H. Donker, Procurement Director

Dordrecht, April 28 2016

**EUROTEC** People • Technology • Solutions  
HVAC • Refrigeration • Electrical • Measurement

**Trust International B.V.**  
LAAN VAN BARCELONA 600  
3317DD DORDRECHT  
NETHERLANDS  
www.trust.com