

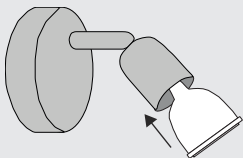
USER MANUAL  
MULTI LANGUAGE



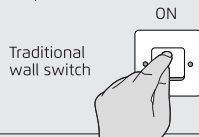
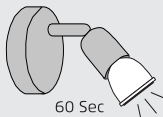
Version 1.0  
Visit [www.trust.com](http://www.trust.com)  
for the latest instructions

ALED-MR2705 WIRELESS DIMMABLE LED SPOT

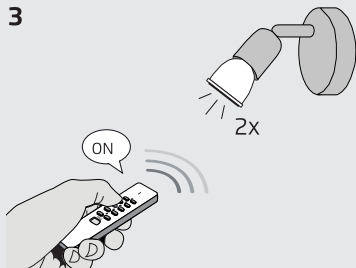
1



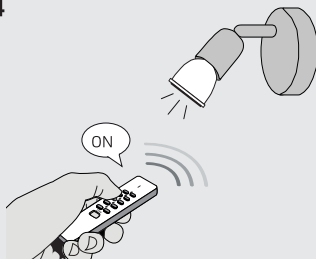
2



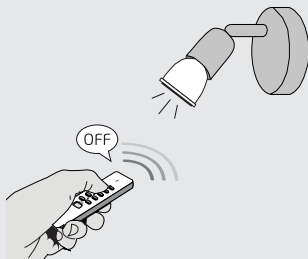
3



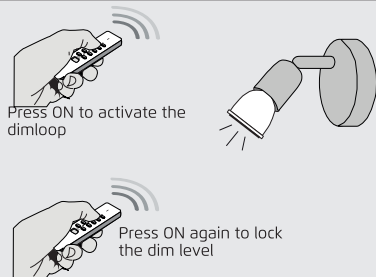
4



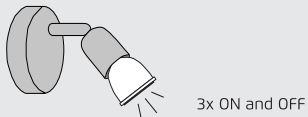
5



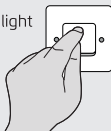
6



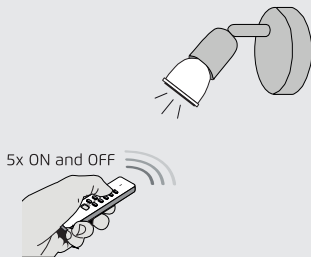
7a



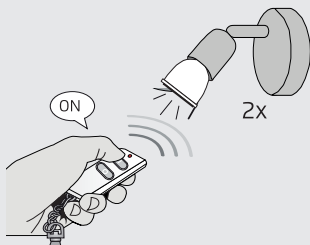
Traditional 230V light  
switch



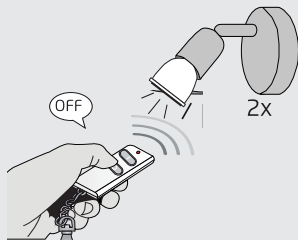
7b



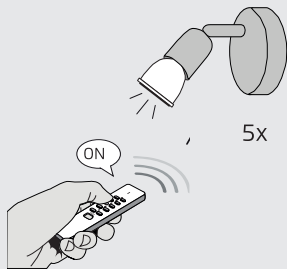
8



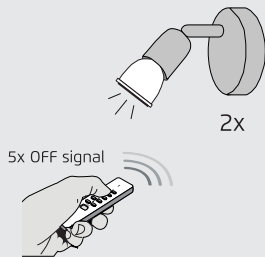
9



10




11



### **1. Install LED bulb**

Install the LED lamp by placing it in the lamp socket and turn it ON using the traditional light switch.

 **When no traditional lightswitch is available.** When the lamp is placed in for the first time it will start in pairing mode immediately. For activating the pairing mode after the first time use, see chapter 7, method 2.

### **2. First use pairing mode**

When the LED lamp is installed for the first time and turned ON using the traditional light switch it will start in pairing mode. The pairing mode is indicated with a blinking light at a low dim level. This pairing mode lasts for 60 seconds.

If no transmitter is paired during this pairing mode, the lamp will turn off. The lamp will start this pairing mode every time it is turned on and no transmitter is paired.

### **3. Pairing transmitter to lamp**

When the lamp is in pairing mode press an ON button on your transmitter to pair it to the lamp. The lamp will flash 2x brightly to confirm that the pairing was successful and stays on.


### **4. Turn lamp ON**

After pairing the lamp with a transmitter, you can turn the lamp on by pressing the ON button on the previously paired transmitter.

It is also still possible to turn the lamp on using the traditional light switch.

### **5. Turn lamp OFF**



After pairing the lamp with a transmitter, you can turn the lamp off by pressing the OFF button on the previously paired transmitter. It is also still possible to turn the lamp off using the traditional light switch.

 The traditional light switch must be in the ON position for wireless switching.

## 6. Dimming

You can control the dim level by pressing the ON button once on the remote when the lamp is turned on. The lamp will go in a dimloop. When you want to lock the dim level press the ON button again on your transmitter.

The lamp remembers the channel at which the dim level has been locked. When you turn the lamp on using this channel the lamp will turn on using the assigned dim level.

 The dim value is remembered per channel or transmitter. The  keys of the AYCT-102 cannot be used to activate the dimloop.

## 7. Pairing mode (When no traditional light switch is available)

There are two methods to activate the pairing mode.

### Method 1:

- Make sure the traditional light switch is in the OFF state.

**7a.** Turn the lamp ON and OFF 3x within 15 sec using the traditional light switch of the lamp. After the thirth ON the lamp will go into pairing mode.



### Method 2:

- Make sure the traditional light switch is in the ON state

- Make sure the lamp is turned OFF with the paired transmitter.

**7b.** Turn the lamp ON and OFF 5x within 15 sec using the paired transmitter. After the fifth ON the lamp will go into pairing mode.

These pairing modes last for 10 seconds. When the pairing mode is finished the lamp will turn ON using the dim value which was last used.

 The  keys on the AYCT-102 cannot be used to activate the pairing mode.

### **8. Pairing transmitter to lamp (In this example the AKCT-510)**

When the lamp is in pairing mode press ON on your transmitter to pair it to the lamp. The lamp will flash 2x brightly to confirm that the pairing was successful. You can now turn the lamp ON and OFF using the transmitter.

### **9. Unpairing transmitter**

The lamp can be unpaired by first putting it in pairing mode. (See step 7a or 7b).

When the lamp is in pairing mode give an OFF signal with a paired transmitter to unpair it from the lamp. The lamp will flash 2x brightly to confirm that the unpairing was successful.

### **10. Memory full**

When you try to pair a transmitter to the lamp and the memory is full it will give an indication by flashing 5x brightly.

### **11. Clear memory**

The memory can be cleared by first putting the lamp in pairing mode. (See step 7a or 7b).

When the lamp is in pairing mode give 5x an OFF signal within 10 sec on a transmitter to clear the memory. When the memory of the lamp has been cleared it will flash 2x at full brightness for confirmation, then the lamp will turn off.

IMPORTANT INFORMATION  
MULTI LANGUAGE



Version 1.0  
Visit [www.trust.com](http://www.trust.com)  
for the latest instructions

ALED-MR2705 WIRELESS DIMMABLE LED SPOT



## **EN** ALED-MR2705 WIRELESS DIMMABLE LED SPOT

---

Read the manual carefully. Failure to follow these instructions can be dangerous. Incorrect installation will void any warranty on this product.

### **COMPATIBILITY**

The LED bulb works with all Trust SmartHome Start-Line transmitters.

### **FUNCTIONALITY**

ALED Wireless Dimmable LED Lamp. (12V)

### **SMARTPHONE/TABLET FUNCTIONS**

By combining this product with the OCTOPUS Control station or ICS-1000, you can also turn the bulb ON or OFF via your tablet and / or smartphone. For more information visit [trust.com/71110](http://trust.com/71110) or [trust.com/71080](http://trust.com/71080)

### **WIRELESS RADIO SIGNAL**

- The 433.92 MHz radio signal passes through walls, windows and doors.
- Indoor 433.92 MHz range: up to 30 m. Outdoor 433.92 MHz range: up to 70 m (optimal conditions).
- The strength depends on local conditions, such as the presence of metals. The metal particles in for example, double glazing (HR glass), can provide a reduction in the range of wireless signals.
- There may be restrictions on the use of this device outside the EU. Check, if applicable, whether this device meets local regulations.

### **LEGAL INFORMATION**

CE: Trust declares this device complies with the Directives as listed in Section 2 of this document.

WEEE: Dispose of the device at a recycling centre. More information: [www.trust.com](http://www.trust.com)

Warranty information: [www.trust.com/warranty](http://www.trust.com/warranty)

**LIFE SUPPORT**

Never use Trust Smart Home products for life support systems or other applications where failures can have life-threatening consequences.

**INTERFERENCE**

Interference can affect the operation of all broadcast transmitter and receivers negatively. The distance between 2 receivers or transmitters should be at least 50 cm.

**REPAIRS**

Do not try to repair this product yourself. The device contains no serviceable parts for the user.

**WATER-RESISTANT**

This product is not water-resistant.

**CLEANING**

Clean this product with a dry cloth. Do not use harsh chemicals, cleaning solvents or strong detergents.

**MEMORY**

The sensor can save up to 6 devices in its memory.

**HANDLING**

Do not drop the device, bump the device against something or shake it. Rough handling can damage internal circuit boards and fine mechanics.

**ENVIRONMENT**

The product should not be exposed to extreme heat or cold. This can damage the circuit boards and batteries or shorten its life.

## CE Declaration of Conformity


Trust International B.V. declares that the TRUST SMART Home-product:

model: ALED-MR2705 WIRELESS DIMMABLE LED SPOT  
item number: 71154  
intended use: Indoor

is in compliance with the essential requirements and other relevant provisions of the following directives: EMC Directive (2014/30/EU), Low Voltage Directive (2014/35/EU), ROHS Directive (2011/65/EC), R&TTE Directive (1999/5/EC). The product is compatible with the following norms/standards:

EN 62560	EN 301489-3 V1.6.1:2013
EN 62031	EN 55015
EN 62471	EN 50581:2012
EN 62493	
EN 300220-1 V2.4.1:2012	
EN 300220-2 V2.4.1:2012	
EN 301489-1 V1.9.2:2011	

Manufacturer/Authorized representative,



H. Donker, Procurement Director

Dordrecht, March 29, 2016

**EUROTEC** People • Technology • Solutions  
HVAC • Refrigeration • Electrical • Measurement

**Trust International B.V.**  
LAAN VAN BARCELONA 600  
3317DD DORDRECHT  
THE NETHERLANDS  
[www.trust.com](http://www.trust.com)