

USER MANUAL



Item 71144 Version 1.0
Visit www.trust.com
for the latest instructions

ALED-2709 WIRELESS DIMMABLE LED BULB

ALED-2709 WIRELESS DIMMABLE LED BULB

Read the manual carefully. Failure to follow these instructions can be dangerous. Incorrect installation will void any warranty on this product.

COMPATIBILITY

The LED bulb works with all Trust Smarthome. startline transmitters

FUNCTIONALITY

ALED2709 Wireless Dimmable LED Bulb

SMARTPHONE/TABLET FUNCTIONS

By combining this product with the OCTOPUS Control station or ICS-1000, you can also turn the bulb ON or OFF via your tablet and / or smartphone. For more information visit trust.com/71110 or trust.com/71080

WIRELESS RADIO SIGNAL

- The 433.92 MHz radio signal passes through walls, windows and doors.
- Indoor 433.92 MHz range: up to 30 m. Outdoor 433.92 MHz range: up to 70 m (optimal conditions).
- The strength depends on local conditions, such as the presence of metals. The metal particles in for example, double glazing (HR glass), can provide a reduction in the range of wireless signals.
- There may be restrictions on the use of this device outside the EU. Check, if applicable, whether this device meets local regulations.

LIFE SUPPORT

Never use Trust Smarthome products for life support systems or other applications where failures can have life-threatening consequences.

INTERFERENCE

Interference can affect the operation of all broadcast transmitter and receivers negatively. The distance between 2 receivers or transmitters should be at least 50 cm.

REPAIRS

Do not try to repair this product yourself. The device contains no serviceable parts for the user.

WATER-RESISTANT

This product is not water-resistant.

CLEANING

Clean this product with a dry cloth. Do not use harsh chemicals, cleaning solvents or strong detergents.

MEMORY

The sensor can save up to 6 devices in its memory.

HANDLING

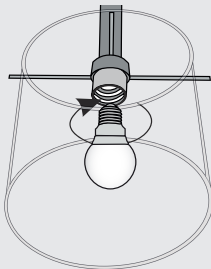
Do not drop the device, bump the device against something or shake it. Rough handling can damage internal circuit boards and fine mechanics.

ENVIRONMENT

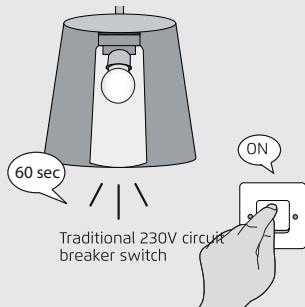
The product should not be exposed to extreme heat or cold. This can damage the circuit boards and batteries or shorten its life.

ALED-2709 WIRELESS DIMMABLE LED BULB

1



2



1. Install LED bulb

Install the LED bulb by screwing it in the lamp socket and turn it ON using the traditional circuit breaker switch.

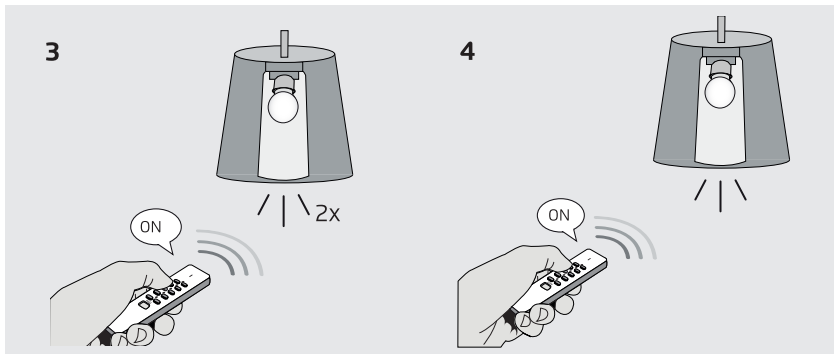
⚠ When no traditional circuit breaker switch is available. When the bulb is screwed in for the first time it will start in pairing mode immediately. For activating the pairing mode after the first time use, see chapter 7 method 2.

5

2. First use pairing mode

When the LED bulb is installed for the first time and turned ON using the traditional circuit breaker switch it will start in pairing mode. The pairing mode is indicated with a blinking light at a low dim level. This pairing mode lasts for 60 seconds. If no transmitter is paired during this pairing mode, the bulb will turn off. The bulb will start this pairing mode every time it is turned on and no transmitter is paired.

ALED-2709 WIRELESS DIMMABLE LED BULB



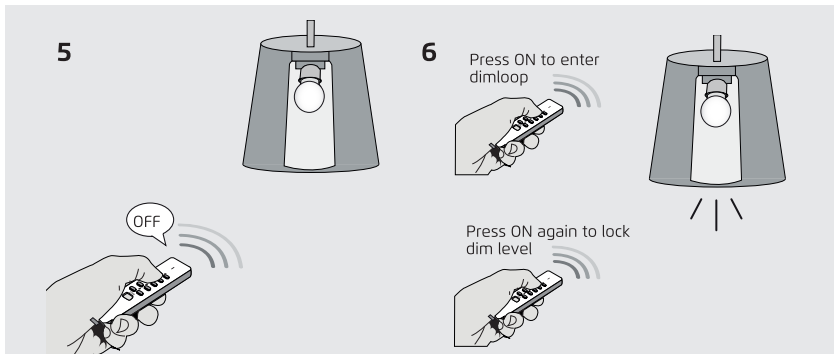
3. Pairing transmitter to bulb

When the bulb is in pairing mode press an ON button on your transmitter to pair it to the bulb. The bulb will flash 2x brightly to confirm that the pairing was successful and stays on

4. Turn bulb ON

After pairing the bulb with a transmitter, you can turn the bulb on by pressing the ON button on the previously paired transmitter. It is also still possible to turn the bulb on using the traditional circuit breaker switch.

ALED-2709 WIRELESS DIMMABLE LED BULB



5. Turn bulb OFF

After pairing the bulb with a transmitter, you can turn the bulb off by pressing the OFF button on the previously paired transmitter. It is also still possible to turn the bulb off using the traditional circuit breaker switch.

⚠ The traditional circuit breaker switch must be in the ON position for wireless switching.

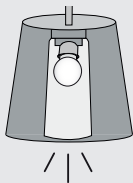
6. Dimming

You can control the dim level by pressing the ON button once on the remote when the bulb is turned on. The bulb will go in a dimloop. When you want to lock the dim level press the ON button again on your transmitter.

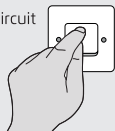
The bulb remembers the channel at which the dim level has been locked. When you turn the bulb on using this channel the bulb will turn on using the assigned dim level.

ALED-2709 WIRELESS DIMMABLE LED BULB

7a

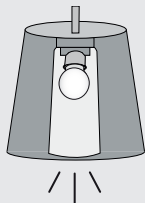


Traditional 230V circuit
breaker switch

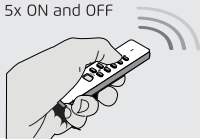


3x ON and OFF

7b



5x ON and OFF



7. Pairing mode

There are two methods to activate the pairing mode.

Method 1:

- Make sure the circuit breaker switch is in the OFF state.

7a. Turn the bulb ON and OFF 3x within 15 sec using the circuit breaker switch of the lamp. After the third ON the bulb will go into pairing mode.

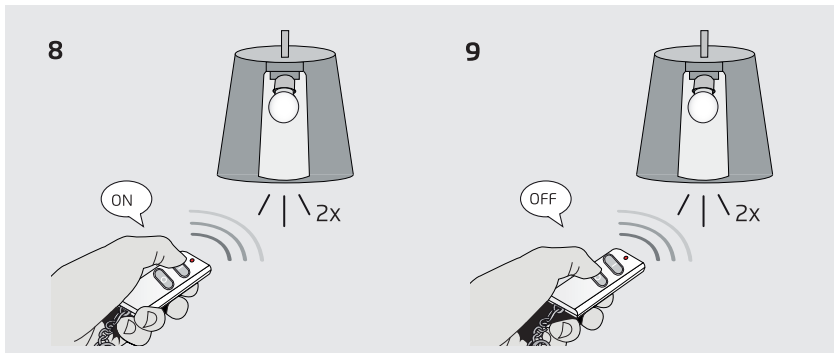
Method 2:

- Make sure the circuit breaker switch is in the ON state
- Make sure the bulb is turned OFF with the paired transmitter.

7b. Turn the bulb ON and OFF 5x within 15 sec using the paired transmitter. After the fifth ON the bulb will go into pairing mode.

These pairing modes last for 10 seconds. When the pairing mode is finished the bulb will turn ON using the dim value which was last used.

ALED-2709 WIRELESS DIMMABLE LED BULB



8. Pairing transmitter to bulb (In this example the AKCT-510)

When the bulb is in pairing mode press ON on your transmitter to pair it to the bulb. The bulb will flash 2x brightly to confirm that the pairing was successful. You can now turn the bulb ON and OFF using the transmitter.

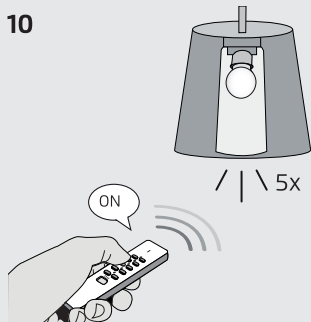
9. Unpairing transmitter

The bulb can be unpaired by first putting it in pairing mode. (See step 7a or 7b).

When the bulb is in pairing mode give an OFF signal with a paired transmitter to unpair it from the bulb. The bulb will flash 2x brightly to confirm that the unpairing was successful.

ALED-2709 WIRELESS DIMMABLE LED BULB

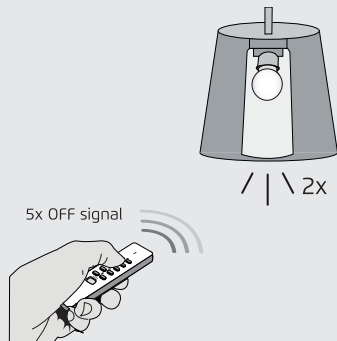
10



10. Memory full

When you try to pair a transmitter to the bulb and the memory is full it will give an indication by flashing 5x brightly.

11



11. Clear memory

The memory can be cleared by first putting the bulb in pairing mode. (See step 7a or 7b).

When the bulb is in pairing mode give 5x an OFF signal within 10 sec on a transmitter to clear the memory. When the memory of the bulb has been cleared it will flash 2x at full brightness for confirmation, then the bulb will turn off.

ALED-2709 WIRELESS DIMMABLE LED BULB



If possible, dispose of this product at a recycling center. Do not dispose of this product with the household waste. WEEE: Dispose of the device at a recycling centre. More information: www.trust.com

Warranty

This product is covered by the legal warranty that applies to your country and it begins on the day of purchase. For additional information, visit: www.trust.com/warranty.

Copyright

The contents of the "User manual" are subject to copyright protection. Without prior written permission, reproducing or copying is prohibited. Information in these documents is subject to change without prior notice. Check www.trust.com/71144 for updates.

 For support and FAQ go to trust.com/71144

CE Declaration of conformity

Trust International B.V. declares that the TRUST SMARTHOME-product:

model:	ALED-2709 Wireless Dimmable LED Bulb
item number:	71144
intended use:	Indoor

is in compliance with the essential requirements and other relevant provisions of the following directives: EMC Directive (2004/108/EC), Low Voltage Directive (2006/95/EC), ROHS Directive (2011/65/EC), R&TTE Directive (1999/5/EC). The product is compatible with the following norms/standards:

EN 62560	EN 301489-1 V1.9.2:2011
EN 62031	EN 301486-3 V1.6.1:2013
EN 62471	EN 55015
EN 62493	EN 61547
EN 300220-1 V2.4.1:2012	EN 61000-3-2:2014
EN 300220-2 V2.4.1:2012	EN 61000-3-3:2013

Manufacturer/Authorised representative,



H. Donker, Procurement Director

Dordrecht, 14 December 2015

EUROTEC People • Technology • Solutions
HVAC • Refrigeration • Electrical • Measurement

Trust International B.V.
LAAN VAN BARCELONA 600
3317DD DORDRECHT
NETHERLANDS
www.trust.com