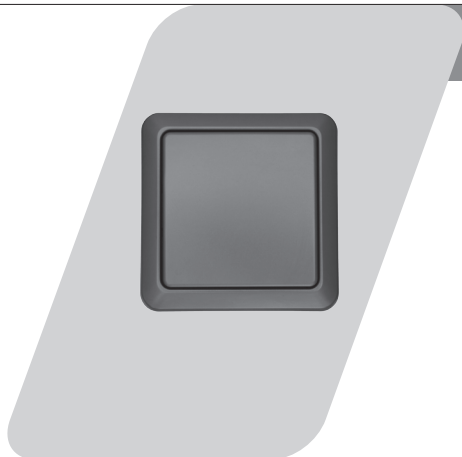


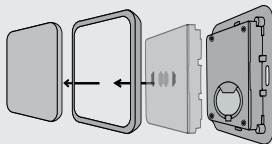
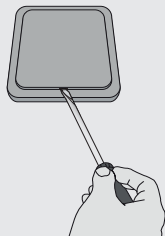
**USER MANUAL
MULTI LANGUAGE**



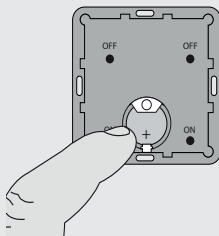
Item 71151 Version 1.0
Visit www.trust.com
for the latest instructions

Outdoor wireless wall switch

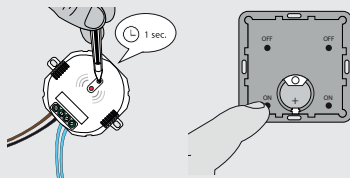
1



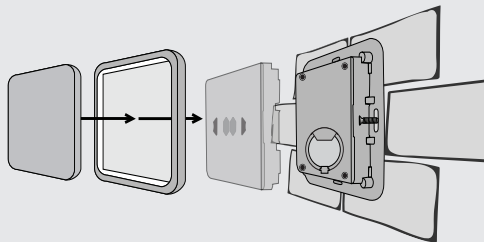
2



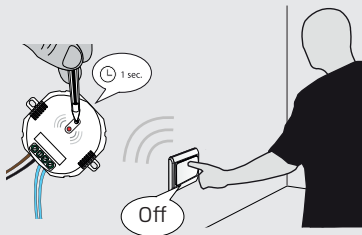
3



4



5



1. Open wall switch

At the bottom of the push-button is an opening. Use a flat screwdriver to carefully remove the push button. Remove the push button, the frame and the rubber plate of the wall switch.

2. Place battery

Insert the battery into the battery compartment. Note the + and - terminals of the battery with the + and - symbols in the battery compartment.

3. Pair the wall switch with a receiver

To operate a receiver first you must pair the wireless wall switch with the receiver. Put the receiver in learning mode (see the manual of the receiver to activate the learning mode).

Give an ON signal on the wall switch when the learning mode of the receiver is active. The receiver will give a confirmation that the pairing of the wall switch has been successful.

4. Mount the wall switch

Place the backplate of the wall switch on a surface. Screw the backplate of the wall switch in place using the supplied screws.

Place the rubber plate, the frame and the push button back on the backplate. Press the pushbutton firmly in the frame of the AGST-8800 until a click is heard.

5. Operating the wall switch

5a. Dimming

1. Press the ON button to turn on the receiver.
2. Press the ON button again to activate the dimmode. The light will slowly dim in a cycle.
3. Press for the third time the ON button to secure the desired dim level.
4. Press the OFF button to turn off the receiver.

5b. Switching On/Off

1. Press the ON button to turn on the receiver.
2. Press the OFF button to turn off the receiver.

5c. Open/Stop/Close

1. Press the ON button to open the blinds. Press the ON button again to stop the blinds.
 2. Press the OFF button to close the blinds. Press the OFF button again to stop the blinds.
- Read the manual of the receiver to reverse the direction of the blinds.

5d. Activating wireless doorbell

Press the ON button to activate the melody of the wireless doorbell.
For more information, see the manual of the receiver

Unpair wireless wall switch

To unpair the wall switch put the receiver into learning mode. When the receiver is in learning mode give an OFF signal with the wall switch. The receiver will give a confirmation that the wall switch is unpaired.

The receiver can no longer be operated with the wall switch.

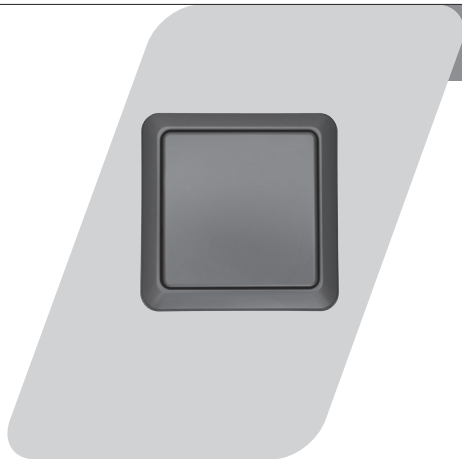
Clear the memory of the receiver

Consult the manual of the receiver to erase its memory.



SECURITY PLUS-LINE
AGST-8800

IMPORTANT INFORMATION
MULTI LANGUAGE



Item 71151 Version 1.0
Visit www.trust.com
for the latest instructions

Outdoor wireless wall switch

EN AGST-8800 OUTDOOR WIRELESS WALL SWITCH

Read these simple instructions. Failure to follow these instructions can be dangerous. Incorrect installation will void any warranty on this product.

FUNCTIONALITY

This wireless wall switch allows receivers (for lighting / blinds / equipment / wireless doorbell) to be controlled wirelessly.

COMPATIBILITY

This transmitter can operate one or more Trust Smart Home receivers (on / off, dimming, open / close, melody activate wireless doorbell).

TECHNICAL SPECIFICATIONS

Codesystem	Automatic
Number of channels	1
Protection class	IP-44 splashproof
RF frequency	433,92 MHz RF
RF Range	Indoors up to 30 m, Outdoors up to 70 m (under optimal conditions)
Power	3V lithium batterij CR2032 (included)
Dimensions	HxWxD: 80 x 80 x 17 mm

WIRELESS RADIO SIGNAL

- The 433.92 MHz radio signal passes through walls, windows and doors.
- Indoor 433.92 MHz range: up to 30 m. Outdoor 433.92 MHz range: up to 70 m (optimal conditions).
- The strength depends on local conditions, such as the presence of metals. The metal particles in for example, double glazing (HR glass), can provide a reduction in the range of wireless signals.
- There may be restrictions on the use of this device outside the EU. Check, if applicable, whether this device meets local regulations.

LIFE SUPPORT

Never use Trust Smart Home products for life support systems or other applications where failures can have life-threatening consequences.

INTERFERENCE

Interference can affect the operation of all broadcast transmitter and receivers negatively. The distance between 2 receivers or transmitters should be at least 50 cm.

REPAIRS

Do not try to repair this product yourself. The device contains no serviceable parts for the user.

WATER-RESISTANT

This product is IP-44 waterresistant.

CLEANING

Clean this product with a dry cloth. Do not use harsh chemicals, cleaning solvents or strong detergents.

HANDLING

Do not drop the device, bump the device against something or shake it. Rough handling can damage internal circuit boards and fine mechanics.

ENVIRONMENT

The product should not be exposed to extreme heat or cold. This can damage the circuit boards and batteries or shorten its life.

Legal information

CE: Trust declares this device complies with the Directives as listed in Section 2 of this document.

WEEE: Dispose of the device at a recycling centre. More information: www.trust.com

Warranty information: www.trust.com/warranty

CE Declaration of conformity


Trust International B.V. declares that the TRUST SMART HOME-product:

model:	AGST-8800 Outdoor wireless wall switch
item number:	71151
intended use:	Outdoor

is in compliance with the essential requirements and other relevant provisions of the following directives: EMC Directive (2014/30/EU), Low Voltage Directive (2014/35/EU), ROHS Directive (2011/65/EC), R&TTE Directive (1999/5/EC). The product is compatible with the following norms/standards:

EN 301 489-1 V1.9.2 (2011-09)
EN 301 489-3 V1.6.1 (2013-08)
EN 300 220-1 V2.4.1 (2012-05)
EN 300 220-2 V2.4.1 (2012-05)
EN 60950-1:2006+A11:2009+A1:2010+A12:2011+A2:2013
IEC 60950-1:2005 (Second Edition) + Am 1:2009 + Am 2:2013
IEC 60529 Edition 2.2:2013
EN 50581:2012

Manufacturer/Authorized representative,



H. Donker, Procurement Director

Dordrecht, April 19, 2016

EUROTEC People • Technology • Solutions
HVAC • Refrigeration • Electrical • Measurement

Trust International B.V.
LAAN VAN BARCELONA 600
3317DD DORDRECHT
NETHERLANDS
www.trust.com