

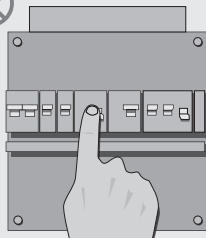
USER MANUAL
MULTI LANGUAGE



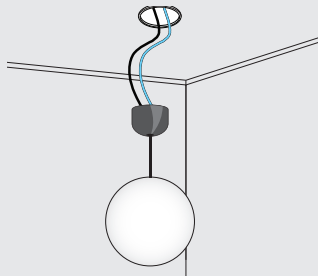
Item 71015 Version 1.0
Visit www.trustsmarthome.com
for the latest instructions

BUILD-IN SWITCH

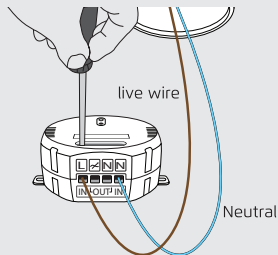
1



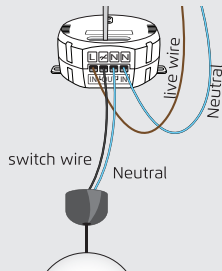
2



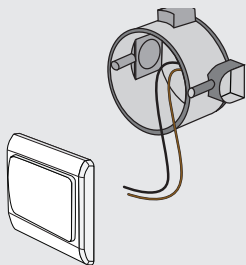
3



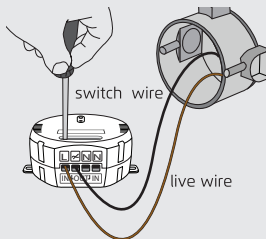
4



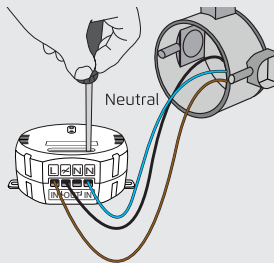
5



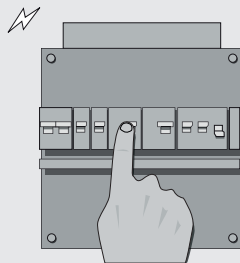
6



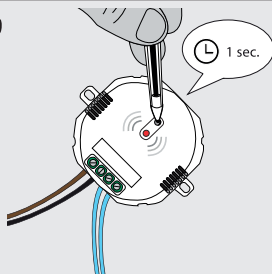
7



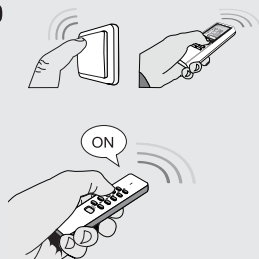
8



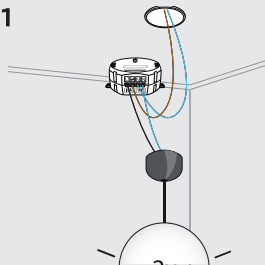
9



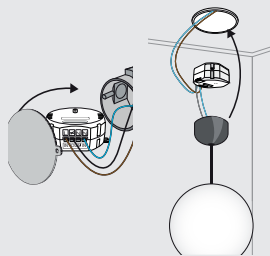
10



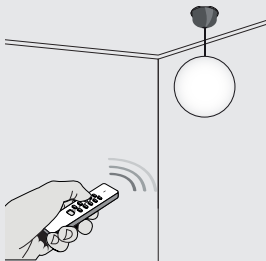
11



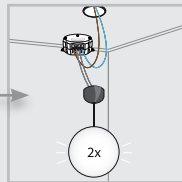
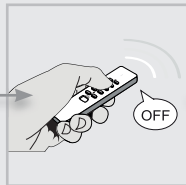
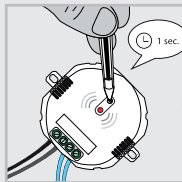
12



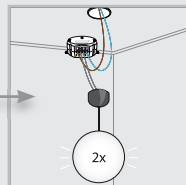
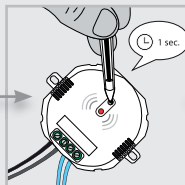
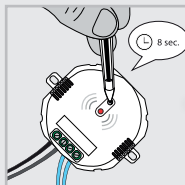
13



14



15



1. Switch off the mains power (electric meter box)

- Continue with [2] for ceiling or wall box installation.
- Continue with [5] for existing wall switch replacement installation.

2. Ceiling installation: Remove the existing lighting

Detach the existing lighting and disconnect the wires. Do not exceed the maximum load: 1000W.

3. Connect the live and neutral wire to [IN]

Connect the live wire to the outer left [L] terminal. Connect the neutral wire to the outer right [N] terminal. Tighten the clamping screws.

4. Connect 2 wires to [OUT]

Connect 2 wires to the inner [↗] and [N] contact. Tighten the clamping screws.

5. Wall installation: Remove the existing light switch

This receiver is a replacement for the existing wall switch and it is not suitable if the existing light switch is interconnected to other light switches for multiway switching. Do not exceed the maximum load: 1000W.

6. Connect the live wire and switch wire

Connect the live wire to the [L] contact. Connect the switch wire to the [↗] contact. Tighten the clamping screws.

7. Connect a neutral wire

Connect a neutral wire from the wall to 1 of the [N] terminals. If there is no neutral wire present, one has to be installed.

8. Switch on the mains power (electric meter box) to continue the installation

Shock hazard! Do not contact any exposed wiring. Only touch the plastic housing of this product.

9. Activate learn-mode

Press the learn-button on the receiver for 1 second. The learn-mode will be active for 15 seconds and the LED-indicator will blink slowly.

10. Assign Trust SmartHome transmitter code

While the learn-mode is active, send an ON-signal with any Trust SmartHome transmitter to assign the code to the receiver's memory.

11. Code confirmation

The receiver will switch on/off 2 times to confirm the code has been received. The receiver can store up to 6 different transmitter codes in its memory. The memory will be preserved when the receiver is moved to another location or in case of power failure.

12. Mount the receiver in the box

Mount the receiver in the wall or ceiling box (break off the mounting tabs if necessary) and cover it up with a blind cover or mount the light back onto the ceiling again.

13. Manual operation with a Trust SmartHome transmitter

- Press ON to switch the receiver on
- Press OFF to switch the receiver off

14. Single code delete

1. Press the learn-button for 1 second. The learn-mode will be active for 15 seconds and the LED-indicator will blink slowly.
2. While the learn-mode is active, send an OFF-signal of a specific Trust SmartHome transmitter to delete that code.
3. The receiver will switch on/off 2 times to confirm code deletion.

15. Full memory delete

1. Press and hold the learn-button on the receiver (approx. 7 sec.) until the LED-indicator starts blinking fast. The delete mode will be active for 15 seconds.
2. While the delete mode is active, press the learn-button again for 1 second.
3. The receiver will switch on/off 2 times to confirm memory deletion.

IMPORTANT INFORMATION
MULTI LANGUAGE



Item 71015 Version 1.0
Visit www.trustsmarthome.com
for the latest instructions

BUILD-IN SWITCH

Read these simple guidelines. Not following them may be dangerous and faulty installation will invalidate any warranty that may apply to this product.

COMPATIBILITY

This receiver works with all Trust SmartHome transmitters.

FUNCTIONALITY

Build-in receiver for switching lights and devices on/off.

TECHNICAL SPECIFICATIONS

- | | |
|-----------------------------|---|
| • Power supply input | 220-240 VAC 50 Hz |
| • Maximum load | 1000 Watt |
| • Replaceable fuse | 20 mm 5A (T5A, H250V) |
| • RF frequency | 433.92 MHz |
| • RF range | Up to 30 m indoor/70 m outdoor (optimal conditions) |
| • Standby power consumption | 0.5 Watt |
| • Memory addresses | 6 |

LIGHTING OVERVIEW (visit www.trustsmarthome.com for more information)

- | | |
|--|--|
| <input checked="" type="checkbox"/> Incandescent lamps | <input checked="" type="checkbox"/> LED lamps |
| <input checked="" type="checkbox"/> Eco halogen lamps | <input checked="" type="checkbox"/> Fluorescent tubes with electronic starter |
| <input checked="" type="checkbox"/> 230 V halogen lamps | <input checked="" type="checkbox"/> Switchstart fluorescent tubes (automatic glow starter) |
| <input checked="" type="checkbox"/> 12 V halogen lamps with electronic transformer | |
| <input checked="" type="checkbox"/> 12 V halogen lamps with iron-core transformer | |
| <input checked="" type="checkbox"/> Compact fluorescent lamps | |

WIRELESS RADIO SIGNAL

- The 433.92 MHz radio signal passes through walls, windows and doors.
- Indoor range: up to 30 m. Outdoor range: up to 70 m. (optimal conditions)
- The range is strongly dependent on local conditions, such as the presence of metals. For example, the thin metal coating in Low-emissivity (Low-E) glass has a negative impact on the range of radio signals.
- There may be restrictions on the use of this device outside the EU. If applicable, check whether this device complies with local directives.

INSTALLATION

Wire colors may vary per country. Contact an electrician when in doubt about wiring. This product is not suitable if the existing light switch is interconnected to other light switches for multiway switching.

MAXIMUM LOAD

Never connect lights or equipment that exceed the maximum load of the receiver, as it can result in defects, a short circuit or fire.

SHOCK HAZARD

Exercise caution when installing a receiver. Voltage may be present, even when a receiver is switched off.

LIFE-SUPPORT

Never use Trust SmartHome products for life-support systems or other applications in which equipment malfunctions can have life-threatening consequences.

INTERFERENCE

All wireless devices may be subject to interference, which could affect performance. The minimum distance between 2 receivers should be at least 50 cm.

REPAIRING

Do not attempt to repair this product. Only replace the fuse if necessary.

WATER-RESISTANCE

This product is not water-resistant. Keep it dry. Moisture will corrode the inner electronics and can result in a short circuit, defects and shock hazard.

CLEANING

Use a dry cloth to clean this product. Do not use harsh chemicals, cleaning solvents, or strong detergents.

HANDLING

Do not drop, knock, or shake the device. Rough handling can break internal circuit boards and fine mechanics.

ENVIRONMENT

Do not expose the product to excessive heat or cold, as it can damage or shorten the life of electronic circuit boards.

LEGAL INFORMATION

CE: Trust declares this device complies with the Directives as listed in Section 2 of this document.

WEEE: Dispose of the device at a recycling centre. More information: www.trustsmarthome.com

Warranty information: www.trustsmarthome.com/warranty

CE Declaration of Conformity

Trust International B.V. declares that this TRUST SMART Home-product:

Model: ACM-1000 BUILD-IN SWITCH
Item number: 71015
Intended use: Indoor

is in compliance with the essential requirements and other relevant provisions of the following directives: EMC Directive, Low Voltage Directive and R&TTE Directive.
The product is compatible with the following norms/standards:

EN 55015:2006 +A1 :2007 +A2:2009
EN 300 220-1 V2.4.1 (2012-05)
EN 300 220-2 V2.4.1 (2012-05)
EN 301 489-1 V1.9.2 (2011-09)
EN 301 489-3 V1.6.1 (2013-08)
EN 55022:2010 +AC:2011, Class B
EN 61000-3-2:2006 +A1:2009 +A2:2009, Class A
EN 61000-3-3:2008
EN 61000-4-2:2009
EN 61000-4-3:2006 +A1:2008 +A2:2010
EN 61000-4-4:2012

EN 61000-4-5:2006
EN 61000-4-6:2009
EN 61000-4-11:2004
EN 60669-2-1:2004 + A1:2009 + A12:2010
EN 60669-2-2:2006
EN 60669-1:1999 + A1:2002 + A2:2008

Authorized representative



H. Donker, Procurement Director
Dordrecht, 1-1-2015

TRUST SMART Home
LAAN VAN BARCELONA 600
3317DD DORDRECHT
NEDERLAND
www.trustsmarthome.com

EUROTEC *People • Technology • Solutions*
HVAC • Refrigeration • Electrical • Measurement