

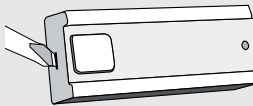
**USER MANUAL
MULTI LANGUAGE**



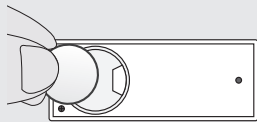
Item 71064 Version 1.0
Visit www.trust.com
for the latest instructions

DOORBELL BUTTON FOR WIRELESS CHIME

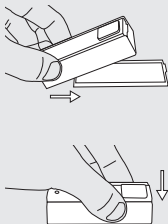
1.1



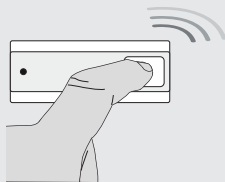
1.2



1.3



2



3

a



b





ACDB-7000A DOORBELL BUTTON FOR WIRELESS CHIME

1. Place battery

- (1.1) Place a screwdriver into the notch on the side of the button. Press gently so that the bottom snaps off the top.
- (1.2) Place the included 3V CR2032 battery in the holder. Ensure correct polarity.
- (1.3) Place the top of the button back on the bottom. First slide the bottom against the top and then click the top onto the bottom.

2. Pair Trust Smart Home transmitters

While the pair mode of the receiver is active, send an ON signal by pressing the button to pair it to the receiver.

3. Mount button

- (a) Place double-sided tape on the back of the wireless button and paste it on a flat surface, or
- (b) Fasten the back of the wireless button with screws on a flat surface.



SECURITY PLUS-LINE
ACDB-7000A

IMPORTANT INFORMATION
MULTI LANGUAGE



Item 71064 Version 1.0
Visit www.trust.com
for the latest instructions

DOORBELL BUTTON FOR WIRELESS CHIME



ACDB-7000A DOORBELL BUTTON FOR WIRELESS CHIME

Read these simple instructions. Failure to follow these instructions can be dangerous. Incorrect installation will void any warranty on this product.

COMPATIBILITY

This transmitter works with all Trust Smart Home receivers, but only transmits ON signals.

FUNCTIONALITY

Transmits on signals to Trust Smart Home receivers. Works directly with the ACDB-7000C, ACDB-6600C and the AMU-500.

TECHNICAL SPECIFICATIONS

Power supply	1x CR2032 3 V lithium (Doorbell button)
Frequency	433,92 MHz
RF Range	Up to 70 m (under optimal conditions)
Water-resistance	IP44

WIRELESS RADIO SIGNAL

- The 433.92 MHz radio signal passes through walls, windows and doors.
- Indoor 433.92 MHz range: up to 30 m. Outdoor 433.92 MHz range: up to 70 m (optimal conditions).
- The strength depends on local conditions, such as the presence of metals. The metal particles in for example, double glazing (HR glass), can provide a reduction in the range of wireless signals.
- There may be restrictions on the use of this device outside the EU. Check, if applicable, whether this device meets local regulations.

Legal information

CE: Trust declares this device complies with the Directives as listed in Section 2 of this document.

WEEE: Dispose of the device at a recycling centre. More information: www.trust.com

Warranty information: www.trust.com/warranty

SHOCK HAZARD

Exercise caution when installing a receiver. Voltage may be present, even when a receiver is switched off.

LIFE-SUPPORT

Never use Trust Smart Home products for life-support systems or other applications in which equipment malfunctions can have life-threatening consequences.

INTERFERENCE

All wireless devices may be subject to interference, which could affect performance. The minimum distance between 2 receivers should be at least 50 cm.

REPAIRING

Do not attempt to repair this product. There are no user-serviceable parts inside.

WATER-RESISTANCE

This product is IP-44 water-resistant

CLEANING

Use a dry cloth to clean this product. Do not use harsh chemicals, cleaning solvents, or strong detergents.

HANDLING

Do not drop, knock, or shake the device. Rough handling can break internal circuit boards and fine mechanics.

ENVIRONMENT

Do not expose the product to excessive heat or cold, as it can damage or shorten the life of electronic circuit boards.

CE Declaration of conformity

Trust International B.V. declares that the TRUST SMART HOME-product:

model:	ACDB-7000A Doorbell button for wireless chime
item number:	71064
intended use:	Indoor/Outdoor

is in compliance with the essential requirements and other relevant provisions of the following directives: EMC Directive (2014/30/EU), Low Voltage Directive (2014/35/EU), ROHS Directive (2011/65/EC), R&TTE Directive (1999/5/EC). The product is compatible with the following norms/standards:

EN 301 489-1 V1.9.2 (2011-09)
EN 301 489-3 V1.6.1 (2013-08)
EN 300 220-1 V2.4.1 (2012-05)
EN 300 220-2 V2.4.1 (2012-05)
EN 62479:2010
EN 55022: 2010 +AC: 2011 Class B
EN 61000-4-2: 2009
EN 61000-4-3: 2006 +A1: 2008 +A2: 2010
IEC 60950-1:2005 (Second Edition) + Am 1:2009 + Am 2:2013
EN 60950-1:2006+A11:2009+A1:2010+A12:2011+A2:2013
EN 50581:2012

Manufacturer/Authorised representative,



H. Donker, Procurement Director

Dordrecht, April 28 2016

EUROTEC People • Technology • Solutions
HVAC • Refrigeration • Electrical • Measurement

Trust International B.V.
LAAN VAN BARCELONA 600
3317DD DORDRECHT
NETHERLANDS
www.trust.com