

USER MANUAL



Version 1.0

Visit www.trustsmarthome.com
for the most recent user manuals

MAINS SOCKET DIMMER

COMPATIBILITY

This receiver works with all TRUST SMART Home transmitters.

FUNCTIONALITY

Mains socket dimmer to dim lights wirelessly.

TECHNICAL SPECIFICATIONS

Power supply input	220-240 VAC 50 Hz
RF frequency	433,92 MHz
RF range	Up to 30m indoor/ 70m outdoor (optimal conditions)
Memory addresses	6

If you connect multiple lamps/spots, always use lamps of the same brand and type!

Incandescent lamps and 230V (eco) halogen	Min 20 Watt	Max 200 Watt
12V halogen with dimmable electronic transformer	Min 20 Watt	Max 200 Watt
12V halogen with with iron-core transformer	Min 40 Watt	Max 200 Watt
Dimmable ESL	Min 3 Watt	Max 24 Watt
Dimmable LED	Min 3 Watt	Max 24 Watt
Non-dimmable ESL and non-dimmable LED	Not suitable	
Switchstart fluorescent tubes and compact fluorescent lamps	Not suitable	

WIRELESS RADIO SIGNAL

- The 433.92 MHz radio signal passes through walls, windows and doors
- Indoor range: up to 30 m. Outdoor range: up to 70 m (optimal conditions)
- The range is strongly dependent on local conditions, such as the presence of metals. For example, the thin metal coating in Low-emissivity (Low-E) glass has a negative impact on the range of radio signals.

Read this manual carefully. Not following them may be dangerous and faulty installation will invalidate any warranty that may apply to this product.

MAXIMUM LOAD

Never connect lights or equipment that exceed the maximum load of the receiver, as it can result in defects.

SHOCK HAZARD

Exercise caution when installing a receiver. Voltage may be present, even when a receiver is switched off.

LIFE-SUPPORT

Never use TRUST SMART Home products for life-support systems or other applications in which equipment malfunctions can have life-threatening consequences.

INTERFERENCE

All wireless devices may be subject to interference, which could affect performance. The minimum distance between 2 receivers should be at least 50 cm.

REPAIRING

Do not attempt to repair this product. There are no user-serviceable parts inside.

WATER-RESISTANCE

This product is not water-resistant. Keep it dry. Moisture will corrode the inner electronics and can result in a short circuit, defects and shock hazard.

CLEANING

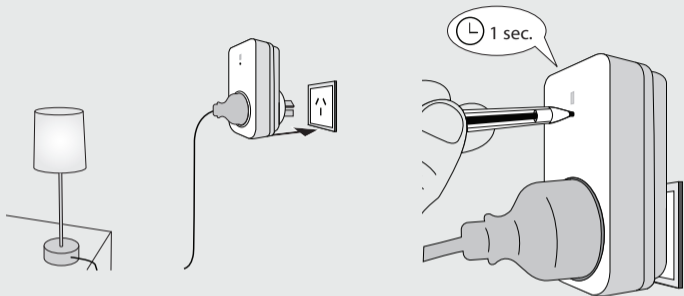
Use a dry cloth to clean this product. Do not use harsh chemicals, cleaning solvents, or strong detergents.

HANDLING

Do not drop, knock, or shake the device. Rough handling can break internal circuit boards and fine mechanics.

ENVIRONMENT

Do not expose the product to excessive heat or cold, as it can damage or shorten the life of electronic circuit boards.

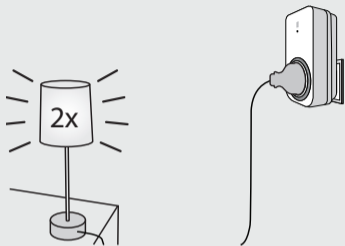
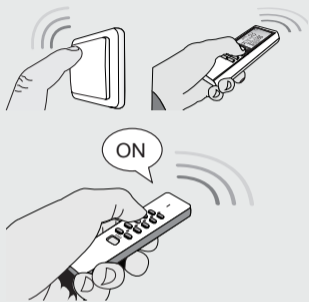


1. Connect lamp and place receiver

First check if the lamp is turned on. Then plug the lamp into the receiver and plug the receiver into a socket. Only connect lamps that are suitable for dimming.

2a. Assign transmitter code

Press the learn-button on the receiver for 1 second. The learn-mode will be active for 15 seconds, during which the LED-indicator will blink slowly.

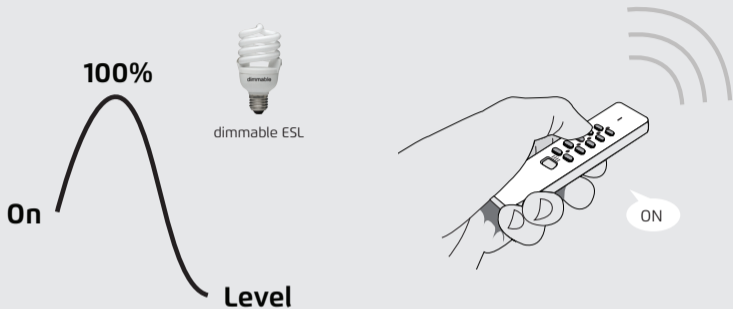
**2b.**

Send an ON-signal with any TRUST SMART Home transmitter while the learn-mode is active, to assign the code to the receiver's memory.

2c.

The receiver will switch on/off 2 times to confirm the code has been received. The receiver can store up to 6 different transmitter codes in its memory. The memory will be preserved when the receiver is moved to another socket or in case of power failure.

Option A: Setting the correct dimming range for dimmable ESL



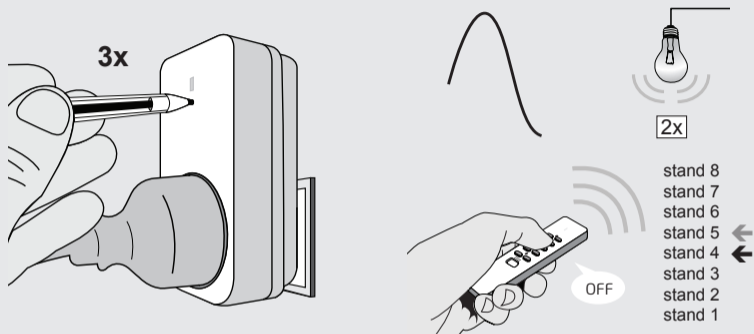
Important note:

To assure correct dimming of dimmable ESL, this dimmer always switches to full brightness (100%) first. Immediately afterwards, the lights are set to the dim-level that you have chosen.

A3. Set the correct dimming range

Every type of lamp (incandescent, halogen, dimmable ESL or dimmable LED) has a different dimming range. Therefore, you should always set the correct dimming range for the connected lamps.

First, switch on the lamp with a TRUST SMART Home transmitter (for example: a remote control).

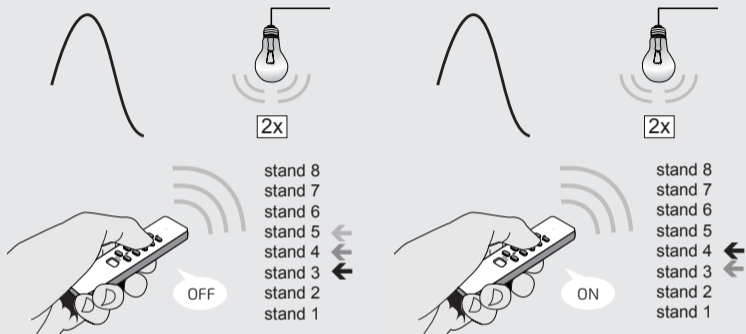


Press the connect button 3 times in quick succession. The LED indicator will flash and the light will switch on. The lights will always switch to the maximum light level first, before they switch to a certain dimming value (this is the factory setting or the last set dimming level).

To assure correct dimming of dimmable ESL, this dimmer always switches to full brightness (100%) first. Immediately afterwards, the lights are set to the dim-level that you have chosen.

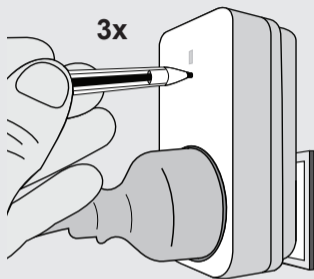
Send an off-signal with the transmitter. Again, the lights will switch to the maximum light level first. Immediately afterwards, the lights will switch to a lower level (1 step less bright).

ACD-200 MAINS SOCKET DIMMER



Each time you send an off-signal, the dim-level will be decreased with 1 step. In total, there are 8 levels (8 is the highest level, 1 is the lowest level). Slowly repeat this procedure until you notice that the lights flicker or switch off. Then you have decreased the dim-level 1 step too much.

To increase the dim-level with 1 step, press the on-button. This way, you will set the correct dim level for the connected lamps (in this example: Level 4).



A4. Save the correct dimming range

Now, press the connect button 3 times in quick succession to exit the dimming range mode. The dim-level that you have chosen will be saved and the connected lights will switch on and off twice. Then, the lights will switch on to the lowest dim-value.

Option B: Setting the correct dimming range for dimmable lighting, except dimmable ESL*



incandescent



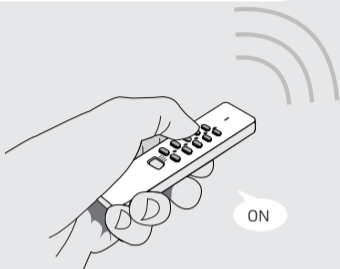
eco halogen



230 V or 12 V
halogen



dimmable
LED



* For dimmable ESL check pages 6-9

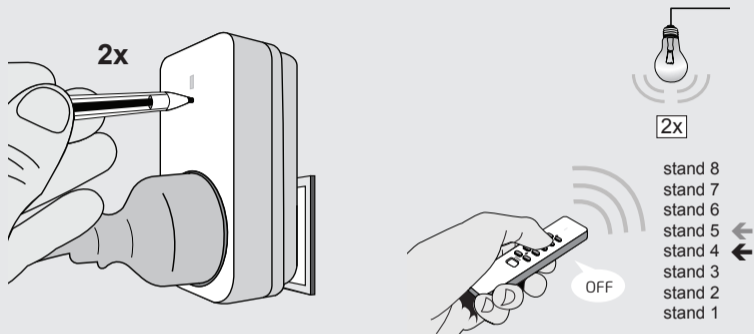


dimmable ESL

B3. Set the correct dimming range

Every type of lamp (incandescent, halogen, dimmable ESL or dimmable LED) has a different dimming range. Therefore, you should always set the correct dimming range for the connected lamps.

First, switch on the lamp with a TRUST SMART Home transmitter (for example: a remote control).



Press the connect button 2 times in quick succession. The LED indicator will flash and the light will switch to a certain dimming value (this is the factory setting or the last set dimming level).

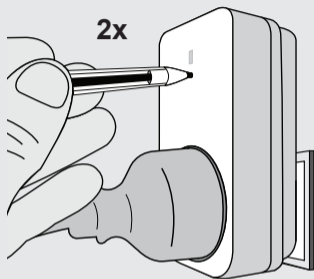
Send an off-signal with the transmitter. Immediately afterwards, the lights will switch to a lower level (1 step less bright).

ACD-200 MAINS SOCKET DIMMER



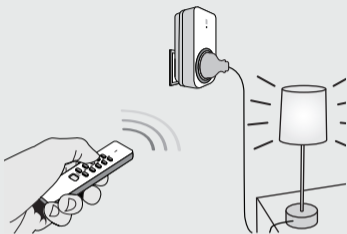
Each time you send an off-signal, the dim-level will be decreased with 1 step. In total, there are 8 levels (8 is the highest level, 1 is the lowest level). Slowly repeat this procedure until you notice that the lights flicker or switch off. Then you have decreased the dim-level 1 step too much.

To increase the dim-level with 1 step, press the on-button. This way, you will set the correct dim level for the connected lamps (in this example: Level 4).



B4. Save the correct dimming range

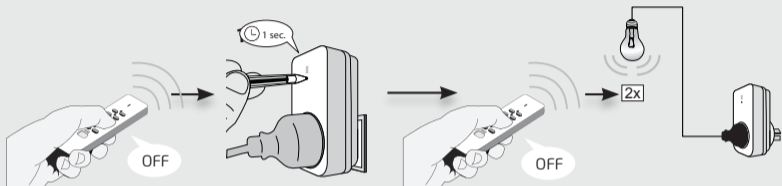
Now, press the connect button 2 times in quick succession to exit the dimming range mode. The dim-level that you have chosen will be saved and the connected lights will switch on and off twice. Then, the lights will switch on to the lowest dim-value.



5. Manual operation with a transmitter

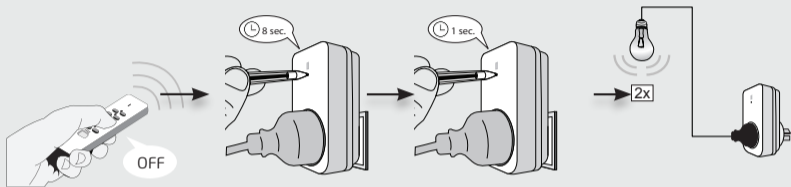
1. Press ON once to switch the receiver on.
2. Press ON again to activate the dim-mode. The light will slowly dim.
3. Press ON a third time to set the desired light intensity.
4. Press OFF to switch the receiver to stand-by.

The receiver will return to the last light level when switched on again.




Single code delete

- (1) Switch the receiver to stand-by
- (2) Press the learn-button for 1 second. The learn-mode will be active for 15 seconds and the LED-indicator will blink slowly.
- (3) While the learn-mode is active, send an OFF-signal with a specific transmitter to delete that code.
- (4) The receiver will switch on/off 2 times to confirm code deletion.



Full memory delete

1. Switch the receiver to stand-by
2. Press and hold the learn-button on the receiver (approx. 8 sec.) until the LED-indicator starts blinking fast. The delete mode will be active for 15 seconds.
3. While the delete mode is active, press the learn-button again for 1 second.
4. The receiver will switch on/off 2 times to confirm memory deletion.

 Trust International B.V. declares that this product is in compliance with the essential requirements and other relevant provisions

 WEEE: If possible, dispose of this product at a recycling center. Do not dispose of this product with the household waste.

Warranty

This product is covered by the legal warranty that applies to your country and it begins on the day of purchase. For additional information, visit: www.trustsmarthome.com/warranty/

Copyright

The contents of this user manual are subject to copyright protection. Without prior written permission, reproducing or copying is prohibited. Information in these documents is subject to change without prior notice. Check www.trustsmarthome.com for updates.

Declaration of conformity

Trust International B.V. declares that the TRUST SMART Home product:

model: ACD-200 MAINS SOCKET DIMMER
item number: 75092
intended use: indoor

is in compliance with the essential requirements and other relevant provisions of the following directives: EMC Directive, Low Voltage Directive and R&TTE Directive.

The product is compatible with the following norms/standards:

AS/NZS 4268:2012 + A1:2013
AS/NZS CISPR 15:2011
CISPR 15:2013
ERHE Standard: 2003
ARPANSA: MELRF - 3kHz to 300GHz
AS/NZS 3122:2005 (Fifth Edition)
AS/NZS 3197:2005 (Second Edition) + Amendment
No. 1: 2007 + Amendment No. 2:2012

Manufacturer/Authorised representative,



H. Donker, Procurement Director
Dordrecht, 28 November 2014



People • Technology • Solutions

HEAD OFFICE : AUCKLAND Tel : (09) 579 1990
WELLINGTON : Tel : (04) 499 3591 CHRISTCHURCH : Tel : (03) 366 0017
Email : sales@eurotec.co.nz WEBSITE : www.eurotec.co.nz

HVAC • Refrigeration • Electrical • Measurement

Trust International B.V.
P.O. BOX 434
3300 AK DORDRECHT
THE NETHERLANDS
www.trustsmarthome.com